

# Spire STL Pipeline

## SPIRE STL PIPELINE PROJECT

### DRAWING INDEX

DWG. No.	DESCRIPTION
△ STLP-CS-001	COVER SHEET
△ STLP-QM-001	USGS QUAD OVERVIEW MAPS
△ STLP-QM-002	USGS QUAD OVERVIEW MAPS
△ STLP-QM-003	USGS QUAD OVERVIEW MAPS
△ STLP-QM-004	USGS QUAD OVERVIEW MAPS
△ STLP-QM-005	USGS QUAD OVERVIEW MAPS
△ STLP-QM-006	USGS QUAD OVERVIEW MAPS
△ STLP-QM-007	USGS QUAD OVERVIEW MAPS
△ STLP-QM-008	USGS QUAD OVERVIEW MAPS
△ STLP-QM-009	USGS QUAD OVERVIEW MAPS
△ STLP-ASI-001	ALIGNMENT SHEET INDEX
△ STLP-ASI-002	ALIGNMENT SHEET INDEX
△ STLP-ASI-003	ALIGNMENT SHEET INDEX
△ STLP-CS-002	LEGEND SHEET
△ STLP-CS-002	LEGEND SHEET

#### ALIGNMENT SHEETS

△ STLP-A-001	ALIGNMENT SHEET
△ STLP-A-002	ALIGNMENT SHEET
△ STLP-A-003.1	ALIGNMENT SHEET
△ STLP-A-003.2	ALIGNMENT SHEET
△ STLP-A-004	ALIGNMENT SHEET
△ STLP-A-005	ALIGNMENT SHEET
△ STLP-A-006	ALIGNMENT SHEET
△ STLP-A-007	ALIGNMENT SHEET
△ STLP-A-008	ALIGNMENT SHEET
△ STLP-A-009	ALIGNMENT SHEET
△ STLP-A-010	ALIGNMENT SHEET
△ STLP-A-011	ALIGNMENT SHEET
△ STLP-A-012	ALIGNMENT SHEET
△ STLP-A-013	ALIGNMENT SHEET
△ STLP-A-014	ALIGNMENT SHEET
△ STLP-A-015	ALIGNMENT SHEET
△ STLP-A-016	ALIGNMENT SHEET
△ STLP-A-017	ALIGNMENT SHEET
△ STLP-A-018	ALIGNMENT SHEET
△ STLP-A-019	ALIGNMENT SHEET
△ STLP-A-020	ALIGNMENT SHEET
△ STLP-A-021	ALIGNMENT SHEET
△ STLP-A-022	ALIGNMENT SHEET
△ STLP-A-023	ALIGNMENT SHEET
△ STLP-A-024	ALIGNMENT SHEET
△ STLP-A-025	ALIGNMENT SHEET
△ STLP-A-026	ALIGNMENT SHEET
△ STLP-A-027	ALIGNMENT SHEET
△ STLP-A-028	ALIGNMENT SHEET
△ STLP-A-029	ALIGNMENT SHEET
△ STLP-A-030	ALIGNMENT SHEET
△ STLP-A-031	ALIGNMENT SHEET
△ STLP-A-032	ALIGNMENT SHEET
△ STLP-A-033	ALIGNMENT SHEET
△ STLP-A-034	ALIGNMENT SHEET
△ STLP-A-035	ALIGNMENT SHEET
△ STLP-A-036	ALIGNMENT SHEET
△ STLP-A-037	ALIGNMENT SHEET
△ STLP-A-038	ALIGNMENT SHEET
△ STLP-A-039	ALIGNMENT SHEET
△ STLP-A-040	ALIGNMENT SHEET
△ STLP-A-041	ALIGNMENT SHEET
△ STLP-A-042	ALIGNMENT SHEET
△ STLP-A-043	ALIGNMENT SHEET
△ STLP-A-044	ALIGNMENT SHEET
△ STLP-A-045	ALIGNMENT SHEET
△ STLP-A-046	ALIGNMENT SHEET
△ STLP-A-047	ALIGNMENT SHEET

#### ALIGNMENT SHEETS

△ STLP-A-048	ALIGNMENT SHEET
△ STLP-A-049	ALIGNMENT SHEET
△ STLP-A-050	ALIGNMENT SHEET
△ STLP-A-051	ALIGNMENT SHEET
△ STLP-A-052	ALIGNMENT SHEET
△ STLP-A-053	ALIGNMENT SHEET
△ STLP-A-054	ALIGNMENT SHEET
△ STLP-A-055	ALIGNMENT SHEET
△ STLP-A-056	ALIGNMENT SHEET
△ STLP-A-057	ALIGNMENT SHEET
△ STLP-A-058	ALIGNMENT SHEET
△ STLP-A-059	ALIGNMENT SHEET
△ STLP-A-060	ALIGNMENT SHEET
△ STLP-A-061	ALIGNMENT SHEET
△ STLP-A-062	ALIGNMENT SHEET
△ STLP-A-063	ALIGNMENT SHEET
△ STLP-A-064	ALIGNMENT SHEET
△ STLP-A-065	ALIGNMENT SHEET
△ STLP-A-066	ALIGNMENT SHEET
△ STLP-A-067	ALIGNMENT SHEET
△ STLP-A-068	ALIGNMENT SHEET

#### ACCESS ROAD SITE PLANS

△ STLP-AR-001	ACCESS ROAD SITE PLANS
△ STLP-AR-002	ACCESS ROAD SITE PLANS
△ STLP-AR-003	ACCESS ROAD SITE PLANS
△ STLP-AR-004	ACCESS ROAD SITE PLANS
△ STLP-AR-005	ACCESS ROAD SITE PLANS
△ STLP-AR-006	ACCESS ROAD SITE PLANS
△ STLP-AR-007	ACCESS ROAD SITE PLANS

#### STAGING AREAS

△ STLP-STGN-001	STAGING AREA SITE PLAN
-----------------	------------------------

#### ALIGNMENT SHEETS

△ STLP-ASI-004	NORTH COUNTY EXTENSION ALIGNMENT SHEET INDEX
△ STLP-A-1001	ALIGNMENT SHEET
△ STLP-A-1002	ALIGNMENT SHEET
△ STLP-A-1003	ALIGNMENT SHEET
△ STLP-A-1004	ALIGNMENT SHEET
△ STLP-A-1005	ALIGNMENT SHEET
△ STLP-A-1006	ALIGNMENT SHEET
△ STLP-A-1007	ALIGNMENT SHEET

#### SITE LAYOUTS

△ STLP-SS-001	REX RECEIPT STATION SITE LAYOUT
△ STLP-SS-002	LACLEDE/LANGE DELIVERY STATION SITE LAYOUT
△ STLP-SS-003	CHAIN OF ROCKS STATION SITE LAYOUT
△ STLP-SS-005	PROPOSED 24" DIAMETER PIPELINE MLV SITE 1
△ STLP-SS-006	PROPOSED 24" DIAMETER PIPELINE MLV SITE 2
△ STLP-SS-007	PROPOSED 24" DIAMETER PIPELINE MLV SITE 3
△ STL-M-200-0100	REX RECEIPT STATION
△ STL-M-200-0200	LACLEDE/LANGE DELIVERY STATION
△ STL-M-200-0300	CHAIN OF ROCKS STATION
△ STL-M-200-0301	CHAIN OF ROCKS STATION (WEST)
△ STL-M-200-0302	CHAIN OF ROCKS STATION
△ STL-M-200-0303	CHAIN OF ROCKS STATION (EAST)

#### HDD PRELIMINARY PLAN/PROFILE DRAWINGS

△ STLP-HDD-001	MISSISSIPPI RIVER MAINLINE
△ STLP-HDD-002	MISSISSIPPI RIVER MAINLINE
△ STLP-HDD-003	MISSISSIPPI RIVER MAINLINE
△ STLP-HDD-004	MISSISSIPPI RIVER MAINLINE
△ STLP-HDD-005A	MISSOURI RIVER MAINLINE
△ STLP-HDD-005	MISSOURI RIVER MAINLINE

#### HDD PRELIMINARY PLAN/PROFILE DRAWINGS

△ STLP-HDD-006	MISSOURI RIVER MAINLINE
△ STLP-HDD-007	MISSOURI RIVER MAINLINE
△ STLP-HDD-1001	HIGHWAY 367 & COLDWATER CREEK NORTH COUNTY EXTENSION
△ STLP-HDD-1002	HIGHWAY 367 & COLDWATER CREEK NORTH COUNTY EXTENSION
△ STLP-HDD-1003	SPANISH LAKE PARK NORTH COUNTY EXTENSION
△ STLP-HDD-1004	SPANISH LAKE PARK NORTH COUNTY EXTENSION
△ STLP-HDD-1005	SPANISH LAKE PARK NORTH COUNTY EXTENSION

#### MAJOR CROSSING

△ STLP-MC-001	MACOUPIN CREEK CROSSING
---------------	-------------------------

3 FERC SUPPLEMENTAL FILING – JULY 2017  
2 AMENDMENT TO FERC – APRIL 2017

REFERENCE DRAWINGS		REFERENCE DRAWINGS		REVISIONS						REVISIONS						APPROVALS						PREPARED FOR		PREPARED BY		SPIRE STL PIPELINE PROJECT			
DWG. NO.	TITLE	DWG. NO.	TITLE	NO.	REVISIONS	DATE	DRAWN	CK	APPR	NO.	REVISIONS	DATE	DRAWN	CK	APPR	DRAWN BY	DATE	ENG. APPROVAL	DATE	CLIENT APPROVAL	DATE	Spire STL Pipeline		M MOTT MACDONALD					
				1	ISSUE FOR FERC	01/2017										RJP	07/2017	DGG	07/2017										
				2	AMENDMENT TO FERC	04/2017													P.M. APPROVAL	DATE									
				3	FERC SUPPLEMENTAL FILING	07/2017										GJC	07/2017	JEV	07/2017										

COVER SHEET





SEE PAGE 2

- ① MILE POST
- PROPOSED M&R SITE
- PROPOSED MAINLINE VALVE SITE
- PROPOSED 24-INCH DIAMETER PIPELINE
- PROPOSED 24-INCH NORTH COUNTY EXTENSION
- PROPOSED ACCESS ROAD
- ▭ TOWNSHIP BOUNDARY
- ▭ COUNTY BOUNDARY
- ▭ STATE BOUNDARY
- ▭ USGS QUADRANGLE BOUNDARY

MAPS COMPILED UTILIZING ESRI TOPOGRAPHIC BASEMAP.

# SPIRE STL PIPELINE PROJECT TOPOGRAPHIC MAP

ALSEY PRECINCT, SCOTT COUNTY AND ROODHOUSE TOWNSHIP,  
GREENE COUNTY, ILLINOIS



N  
W — E  
S

ABSOLUTE SCALE:  
1:24,000

REFERENCE SCALE:  
1 IN = 2,000 FEET

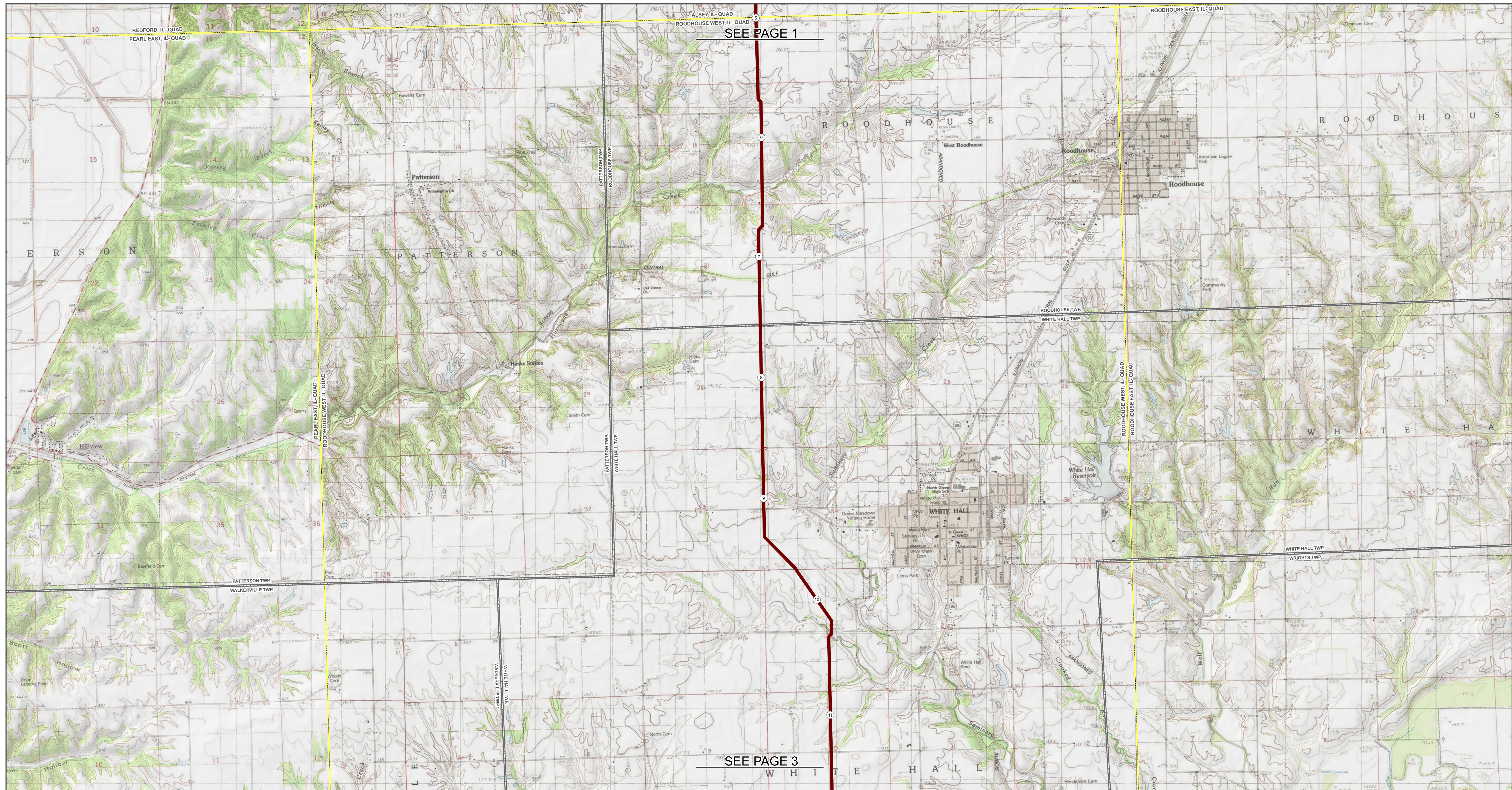
PREPARED FOR  
**Spire STL Pipeline**

PREPARED BY  
**M M**  
**MOTT MACDONALD**

DRAWN BY:	EAP 12/16/2016
CHECKED BY:	KPW 12/19/2016
ENG. APPROVAL:	DG 12/19/2016
APPROVED BY:	JW 12/19/2016
REV. DATE:	04/2017
REVISION:	3
DESC:	AMENDMENT TO FERC
PAGE:	STLP-QM-001

© Spire STL Pipeline Project, FERC/Manis/AMDI-FERC/Figures/Spire\_STL\_Pipeline\_FERC\_Quad\_Overview\_Mainline\_22x34.mxd





SEE PAGE 1

SEE PAGE 3

①	MILE POST		PROPOSED 24-INCH DIAMETER PIPELINE		PROPOSED STAGING AREA
○	PROPOSED M&R SITE		PROPOSED 24-INCH NORTH COUNTY EXTENSION		TOWNSHIP BOUNDARY
●	PROPOSED MAINLINE VALVE SITE		PROPOSED ACCESS ROAD		COUNTY BOUNDARY
					STATE BOUNDARY
					USGS QUADRANGLE BOUNDARY

**MAPS COMPILED UTILIZING ESRI TOPOGRAPHIC BASEMAP.**

# SPIRE STL PIPELINE PROJECT TOPOGRAPHIC MAP

ROODHOUSE & WHITE HALL TOWNSHIPS, GREENE COUNTY, ILLINOIS

0 2,000 4,000 FEET

**ABSOLUTE SCALE:**  
1:24,000

**REFERENCE SCALE:**  
1 IN = 2,000 FEET

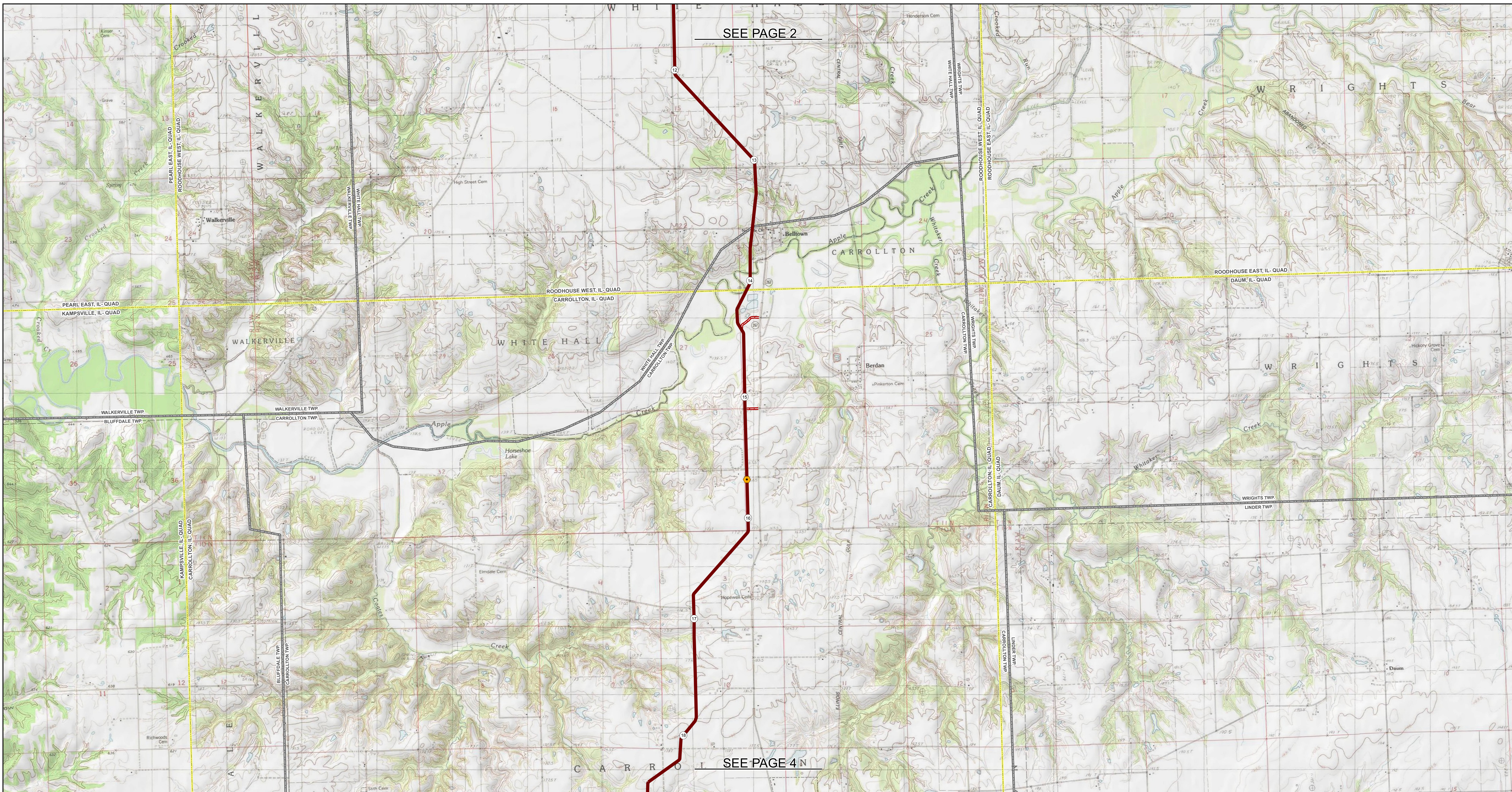
PREPARED FOR **Spire STL Pipeline**

PREPARED BY **M M MOTT MACDONALD**

<b>DRAWN BY:</b>	EAP 12/16/2016
<b>CHECKED BY:</b>	KPW 12/19/2016
<b>ENG. APPROVAL:</b>	DG 12/19/2016
<b>APPROVED BY:</b>	JW 12/19/2016
<b>REV. DATE:</b>	04/2017
<b>REVISION:</b>	3
<b>DESC:</b>	AMENDMENT TO FERC
<b>PAGE:</b>	STLP-QM-002

© SpiRE STL Pipeline Project - FERC Waiver/SAMD - FERC FIDRES/SPIRE\_STL\_PIPELINE\_FERC\_QUAD\_OVERVIEW\_MAINLINE\_22234.mxd





- ① MILE POST
- PROPOSED M&R SITE
- PROPOSED MAINLINE VALVE SITE
- PROPOSED 24-INCH DIAMETER PIPELINE
- PROPOSED 24-INCH NORTH COUNTY EXTENSION
- PROPOSED ACCESS ROAD
- PROPOSED STAGING AREA
- TOWNSHIP BOUNDARY
- COUNTY BOUNDARY
- STATE BOUNDARY
- USGS QUADRANGLE BOUNDARY

MAPS COMPILED UTILIZING ESRI TOPOGRAPHIC BASEMAP.

# SPIRE STL PIPELINE PROJECT TOPOGRAPHIC MAP

WHITE HALL & CARROLLTON TOWNSHIPS, GREENE COUNTY,  
ILLINOIS



ABSOLUTE SCALE:  
1:24,000  
  
 REFERENCE SCALE:  
1 IN = 2,000 FEET

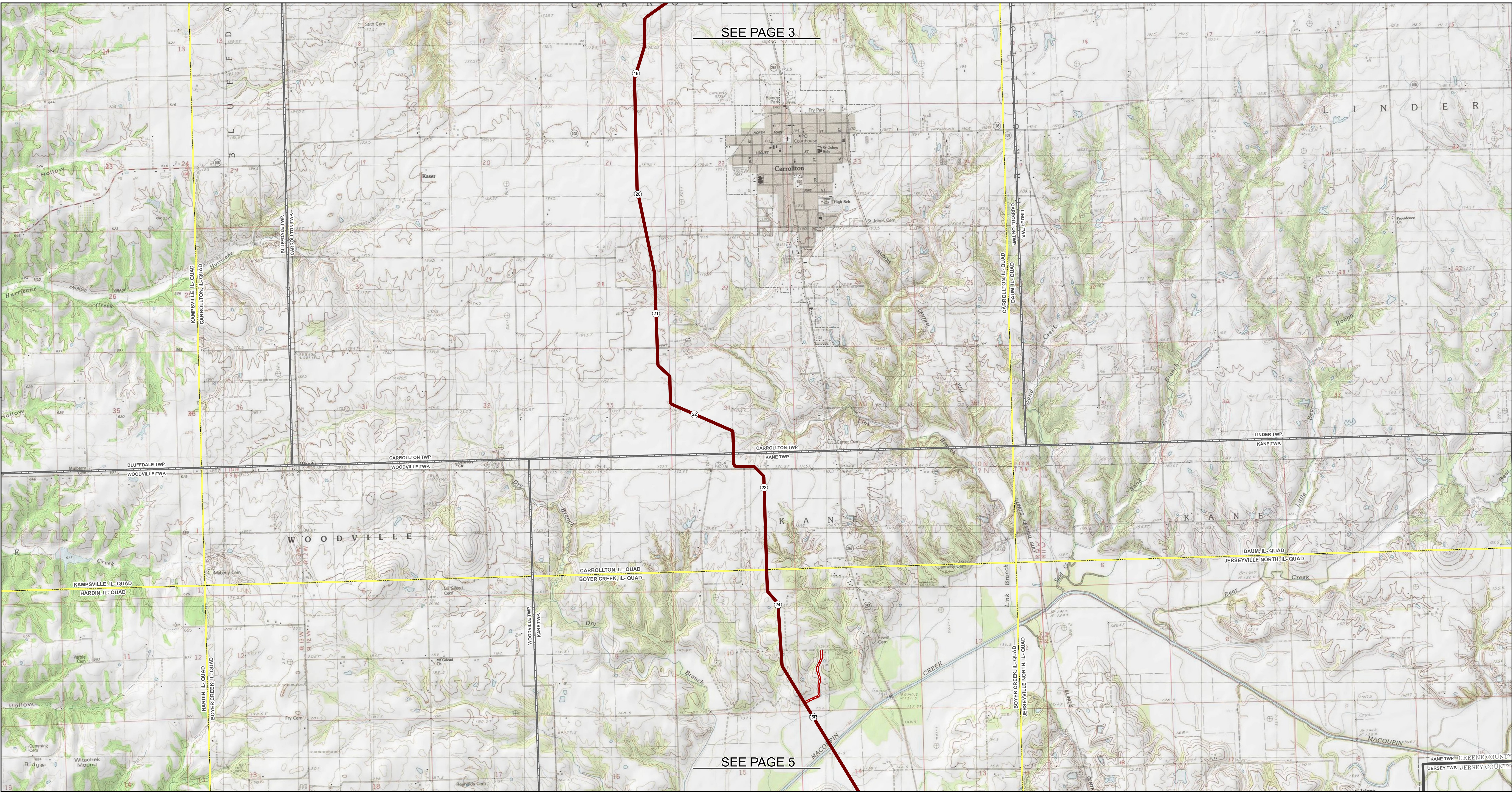
PREPARED FOR  
**Spire STL Pipeline**

PREPARED BY  
**M M**  
**MOTT MACDONALD**

DRAWN BY:	EAP 12/16/2016
CHECKED BY:	KPW 12/19/2016
ENG. APPROVAL:	DG 12/19/2016
APPROVED BY:	JW 12/19/2016
REV. DATE:	04/2017
REVISION:	3
DESC:	AMENDMENT TO FERC
PAGE:	STLP-QM-003

© Spire STL Pipeline Project, FERC, MOTT MACDONALD, FERC, STLP-QM-003, PIPELINE, FERC, QUAD, OVERVIEW, MAINLINE, 2017.mxd





SEE PAGE 3

SEE PAGE 5

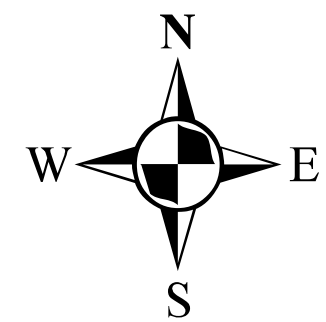
- |   |                              |  |   |  |                          |
|---|------------------------------|--|---|--|--------------------------|
| ① | MILE POST                    |  | PROPOSED 24-INCH DIAMETER PIPELINE      |  | PROPOSED STAGING AREA    |
| ○ | PROPOSED M&R SITE            |  | PROPOSED 24-INCH NORTH COUNTY EXTENSION |  | TOWNSHIP BOUNDARY        |
| ● | PROPOSED MAINLINE VALVE SITE |  | PROPOSED ACCESS ROAD                    |  | COUNTY BOUNDARY          |
|   |                              |  |   |  | STATE BOUNDARY           |
|   |                              |  |   |  | USGS QUADRANGLE BOUNDARY |

MAPS COMPILED UTILIZING ESRI TOPOGRAPHIC BASEMAP.

# SPIRE STL PIPELINE PROJECT

## TOPOGRAPHIC MAP

CARROLLTON & KANE TOWNSHIPS, GREENE COUNTY, ILLINOIS



ABSOLUTE SCALE:  
1:24,000

REFERENCE SCALE:  
1 IN = 2,000 FEET

PREPARED FOR **Spire STL Pipeline**

PREPARED BY **MOTT MACDONALD**

<b>DRAWN BY:</b>	EAP 12/16/2016
<b>CHECKED BY:</b>	KPW 12/19/2016
<b>ENG. APPROVAL:</b>	DG 12/19/2016
<b>APPROVED BY:</b>	JW 12/19/2016
<b>REV. DATE:</b>	04/2017
<b>REVISION:</b>	3
<b>DESC:</b>	AMENDMENT TO FERC
<b>PAGE:</b>	STLP-QM-004

©Spire27403\_Spire STL Pipeline MapProj\_FERC/MapGIS/AMDI-FERC/Figures/SPRE\_STL\_PIPELINE\_FERC\_QUAD\_OVERVIEW\_MAINLINE\_22x34.mxd