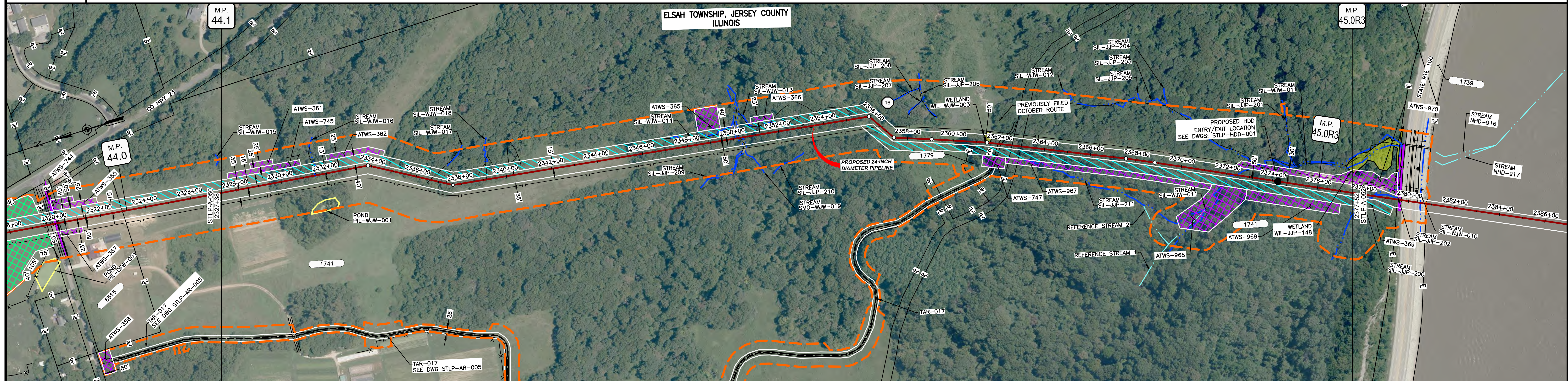
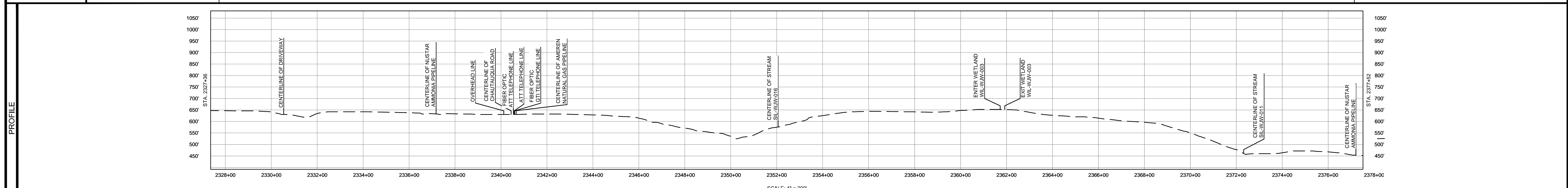


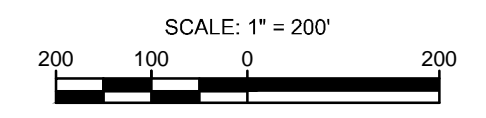
OWNERSHIP / FOOTAGE	2327+38	3519'	1741	PIASA BLUFF ROAD	40'	2377+52	1455'	2377+52
STATIONING	2330+00 CENTERLINE OF DITCH	2331+00 CENTERLINE OF DITCH	2332+00 CENTERLINE OF DITCH	2333+00 CENTERLINE OF DITCH	2334+00 CENTERLINE OF DITCH	2335+00 CENTERLINE OF DITCH	2336+00 CENTERLINE OF DITCH	2337+00 CENTERLINE OF DITCH



CLASS LOCATION/MAOP	AG											
MATERIAL & COATING	4686' (1) 328' (2)											
DESIGN FACTOR	5' MIN.											
CONSTRUCTION METHOD	OPEN CUT	OPEN CUT (FLUMED)	OPEN CUT	OPEN CUT (FLUMED)	OPEN CUT	OPEN CUT (FLUMED)	OPEN CUT	OPEN CUT (FLUMED)	OPEN CUT	OPEN CUT (FLUMED)	OPEN CUT	HDD
PIPELINE COVER	7" MIN.											
SOILS	79C2	833G	79C2	833G	79C2	833G	79D2	833G	79D2	833G	3475A	
LAND USE	AG	F	OL	F	OL	F	OL	F	OW	F	OL	OW F OW W

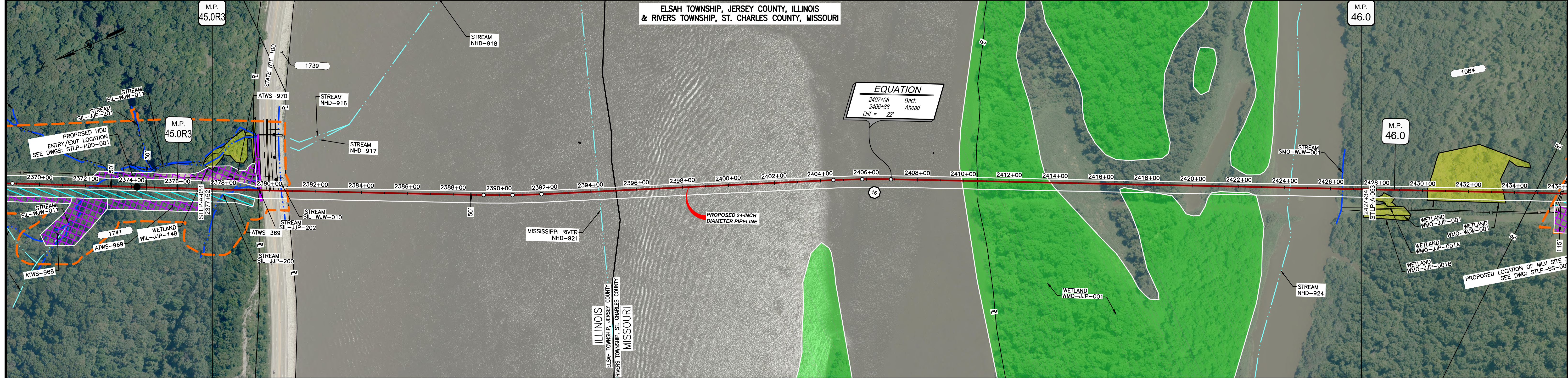


NOTES:
 1. THE IMAGERY SHOWN WAS PROVIDED BY AERIAL DATA SERVICES, 2016. ADDITIONAL IMAGERY SUPPLEMENTED FROM USFWS-NWI AND USGS.
 2. EXISTING FEATURES SHOWN WERE SURVEYED BY MOTT MACDONALD AND DIGITIZED FROM IMAGERY. ALL LOCATIONS ARE APPROXIMATE AND SHALL BE VERIFIED BY CONTRACTOR.

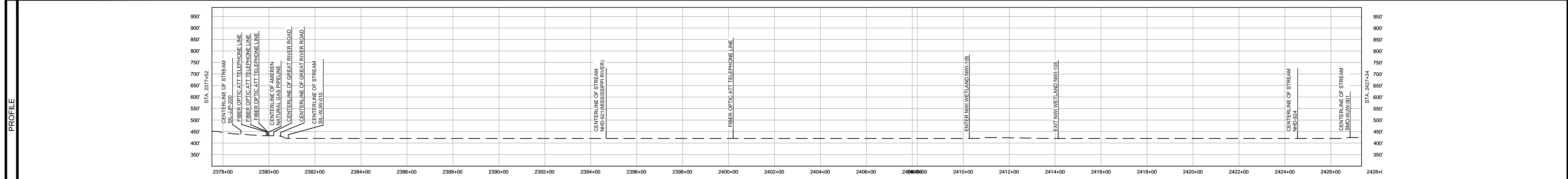


MATERIAL			REFERENCE DRAWINGS			REVISIONS				APPROVALS		PREPARED FOR		SPIRE STL PIPELINE PROJECT			
TAG	QUANTITY	DESCRIPTION	DWG. NO.	TITLE	NO.	REVISIONS	DATE	DRAWN	CK	APPR	DRAWN BY	DATE	SCALE PLAN: 1" = 200' SCALE PROFILE H: 1" = 200' SCALE PROFILE V: 1" = 200'	MOTT MACDONALD	ALIGNMENT SHEET PROPOSED 24-INCH DIAMETER PIPELINE JERSEY COUNTY, ILLINOIS STA. 2327+38 TO STA. 2377+36		
1	4686'	PIPE, 24.000" OD X 0.375" WT, API-5L, X70, DSAW, FBE COATED	STLP-AR-005	ACCESS ROAD SITE PLAN - TAR-017	1	ISSUE FOR FERC	01/2017	GH	EB	DGG	DP	03/2017					
2	328'	PIPE, 24.000" OD X 0.500" WT, API-5L, X70, DSAW, FBE/ARO COATED	STLP-HDD-001	HDD PROFILE OVERVIEW	2	AMENDMENT TO FERC	04/2017	KAM	RJP	DGG	CHECKED BY	DATE					
20	2	ELL, 24.000" OD X 0.375" WT, 3DR, WPHY70, FBE COATED			3	FERC SUPPLEMENTAL FILING	07/2017	KAM	RJP	DGG	RJP	03/2017					
					4	FERC SUPPLEMENTAL FILING	10/2017	DP	RJP	DGG	ENG. APPROVAL	DATE					
					5	ISSUED FOR IMPLEMENTATION PLAN	05/2018	RJR	RJP	DGG	DGG	07/2017					
											P.M. APPROVAL	DATE					
											JEV	07/2017					
												SCALE	DRAWING NO.	REVISION			
												1" = 200'	STLP-A-051	5			

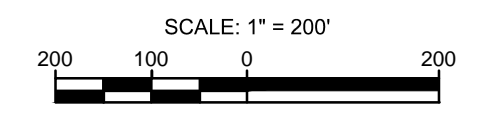
OWNERSHIP / FOOTAGE	2377+52	1741 198'	1739 128'	2390+28	MISSISSIPPI RIVER 3007'	2410+83	1084 1671'	2427+34
STATIONING	2379+46 CENTERLINE OF STREAM SL-JIP-200 2379+50 PROPERTY LINE 2379+56 FIBER OPTIC TELEPHONE LINE 2379+58 CENTERLINE OF DITCH 2379+62 FIBER OPTIC TELEPHONE LINE 2379+64 FIBER OPTIC TELEPHONE LINE 2379+66 FIBER OPTIC TELEPHONE LINE 2379+68 CENTERLINE OF AMERICAN NATURAL GAS PIPELINE 2379+68 EDGE OF PAVEMENT 2379+68 CENTERLINE OF STATE ROUTE 100 2380+00 ASPHALT PAVEMENT 2380+06 CONCRETE 2380+10 CENTERLINE OF STATE ROUTE 100 2380+10 EDGE OF PAVEMENT 2380+41 CURB/RAIL 2380+52 CENTERLINE OF STREAM SL-WJW-010 2380+58 PROPERTY LINE 2380+62 1"X10"O.D. LT 2380+62 2"X10"O.D. LT 2381+85 1"X10"O.D. LT 2394+36 CENTERLINE OF STREAM NHD-821 (MISSISSIPPI RIVER) 2395+10 COUNTY LINE 2395+10 MUNICIPAL BOUNDARY 2395+10 ILLINOIS/MISSOURI STATE BOUNDARY 2406+57 1"X10"O.D. RT 2406+58 2"X10"O.D. RT 2406+58 1"X10"O.D. RT 2409+34 ENTER NW1/4 WETLAND NW-105 2410+83 PROPERTY LINE 2411+42 EXIT NW1/4 WETLAND NW-105 2444+93 CENTERLINE OF NHD STREAM NHD-824 2468+53 CENTERLINE OF STREAM SMO-WJW-001							



CLASS LOCATION/MAOP	CLASS I / 1440 PSIG									
MATERIAL & COATING	5004' (2)									
DESIGN FACTOR	0.5									
CONSTRUCTION METHOD	HDD									
PIPELINE COVER	7' MIN.									
SOILS	3475A	W	99001	66066	99001	66066	99001	66066		
LAND USE	W	F	W	F	D	OL	OW	W	OW	F

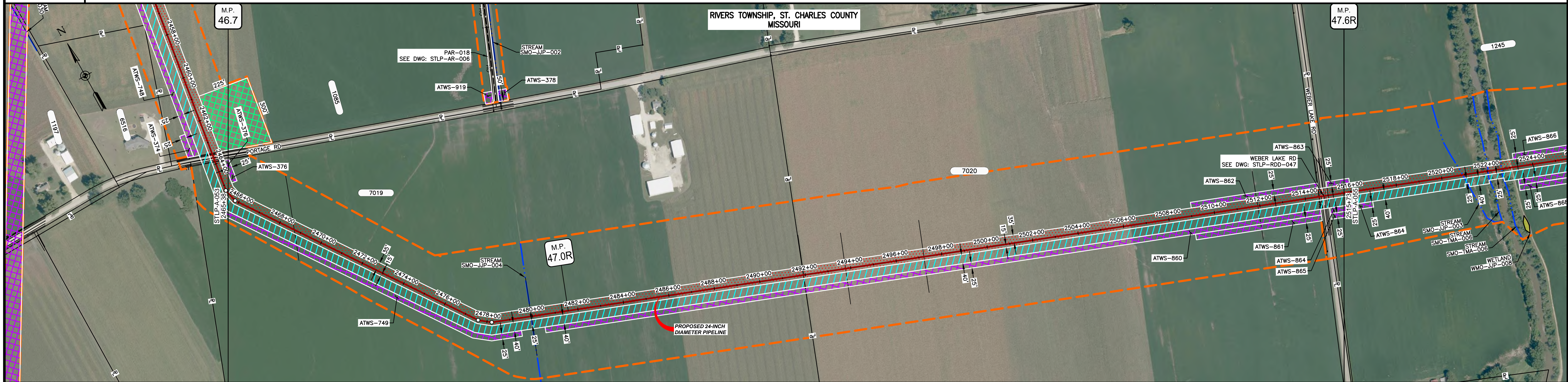


NOTES:
 1. THE IMAGERY SHOWN WAS PROVIDED BY AERIAL DATA SERVICES, 2016. ADDITIONAL IMAGERY SUPPLEMENTED FROM USFWS-NWI AND USGS.
 2. EXISTING FEATURES SHOWN WERE SURVEYED BY MOTT MACDONALD AND DIGITIZED FROM IMAGERY. ALL LOCATIONS ARE APPROXIMATE AND SHALL BE VERIFIED BY CONTRACTOR.

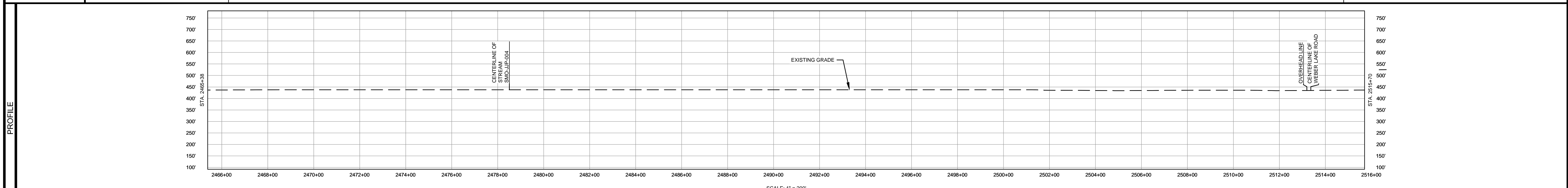


MATERIAL		REFERENCE DRAWINGS		REVISIONS				APPROVALS		SCALE PLAN		PREPARED FOR		SPIRE STL PIPELINE PROJECT		
TAG	QUANTITY	DESCRIPTION	DWG. NO.	TITLE	NO.	REVISIONS	DATE	DRAWN	CK	APPR	DRAWN BY	DATE	SCALE PLAN	1" = 200'		
2	5004'	PIPE, 24.000" OD X 0.500" WT, API-5L X70, DSAW, FBE/ARO COATED	STLP-HDD-001	HDD PROFILE OVERVIEW - MISSISSIPPI RIVER MAINLINE	1	ISSUE FOR FERC	01/2017	GH	EB	DGG	GG	07/2017	SCALE PROFILE H:	1" = 200'		
					2	AMENDMENT TO FERC	04/2017	KAM	RJP	DGG	CHECKED BY	DATE	SCALE PROFILE V:	1" = 200'		
					3	FERC SUPPLEMENTAL FILING	07/2017	KAM	RJP	DGG	RJP	07/2017	CLIENT APPROVAL			
					4	FERC SUPPLEMENTAL FILING	10/2017	DP	RJP	DGG	ENG. APPROVAL	DATE	PREPARED BY			
					5	ISSUED FOR IMPLEMENTATION PLAN	05/2018	RJR	RJP	DGG	DGG	07/2017	MOTT MACDONALD			
											P.M. APPROVAL	DATE	DATE			
											JEW	07/2017	SCALE: 1" = 200'			
													DRAWING NO. STLP-A-052		REVISION	
															5	

OWNERSHIP / FOOTAGE	2465+38	7019 2655'	2481+83	7020 2292'	1245 8'	2514+85	2515+73
STATIONING	2465+38	2468+71 CENTERLINE OF DITCH	2474+51 CENTERLINE OF DITCH 2478+23 CENTERLINE OF DITCH	2481+83 2481+83 CENTERLINE OF DITCH 2481+83 CENTERLINE OF DITCH 2481+83 CENTERLINE OF DITCH	2490+70 CENTERLINE OF DITCH	2490+70 CENTERLINE OF DITCH 2511+85 CENTERLINE OF DITCH	2514+85 OVERHEAD LINE 2514+70 EDGE OF PAVEMENT 2514+85 CENTERLINE OF WEBER LAKE ROAD 2514+85 PROPERTY LINE 2514+85 EDGE OF PAVEMENT



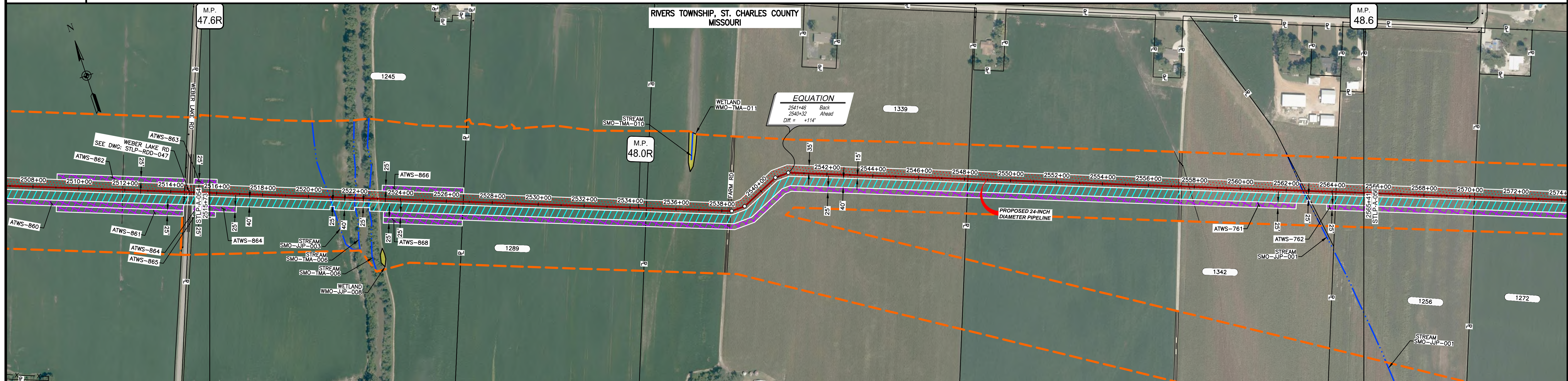
CLASS LOCATION/MAOP	CLASS 1 / 1440 PSIG							
MATERIAL & COATING	2465+38	4904' (1)				2514+42	2514+22	2515+73
DESIGN FACTOR	0.72				0.6		0.72	
CONSTRUCTION METHOD	OPEN CUT		OPEN CUT (FLUMED)	OPEN CUT			BORE	OPEN CUT
PIPELINE COVER	7' MIN.							
SOILS	66100		66066		66100		66066	
LAND USE	AG				OL D OL		AG	



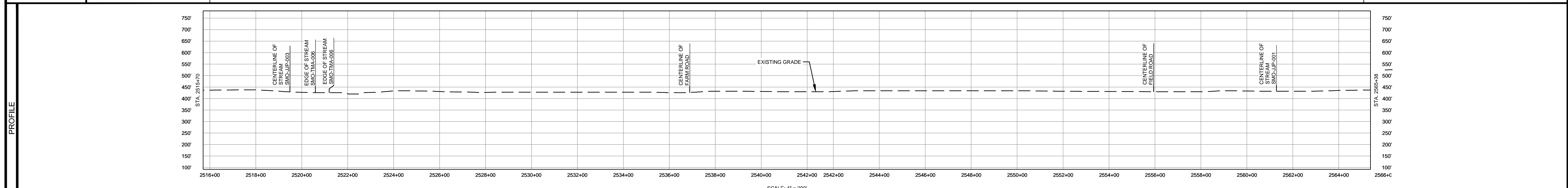
NOTES:
 1. THE IMAGERY SHOWN WAS PROVIDED BY AERIAL DATA SERVICES, 2016. ADDITIONAL IMAGERY SUPPLEMENTED FROM USFWS-NWI AND USGS.
 2. EXISTING FEATURES SHOWN WERE SURVEYED BY MOTT MACDONALD AND DIGITIZED FROM IMAGERY. ALL LOCATIONS ARE APPROXIMATE AND SHALL BE VERIFIED BY CONTRACTOR.

MATERIAL			REFERENCE DRAWINGS		REVISIONS				APPROVALS		SCALE PLAN		PREPARED FOR		SPIRE STL PIPELINE PROJECT					
TAG	QUANTITY	DESCRIPTION	DWG. NO.	TITLE	NO.	REVISIONS	DATE	DRAWN	CK	APPR	DRAWN BY	DATE	SCALE PLAN	SCALE PROFILE H	SCALE PROFILE V	PREPARED FOR		SPIRE STL PIPELINE PROJECT		
1	4955'	PIPE, 24.000" OD X 0.375" WT, API-5L, X70, DSAW, FBE COATED	STLP-AR-006	ACCESS ROAD SITE PLAN -PAR-018	1	ISSUE FOR FERC	01/2017	GH	EB	DGG	DP	03/2017	1" = 200'	1" = 200'	1" = 200'	Spire STL Pipeline		ALIGNMENT SHEET		
2	80'	PIPE, 24.000" OD X 0.500" WT, API-5L, X70, DSAW, FBE/ARO COATED			2	AMENDMENT OT FERC	04/2017	KAM	RJP	DGG	CHECKED BY	DATE	CLIENT APPROVAL		PREPARED BY		ST. CHARLES COUNTY, MISSOURI			
					4	FERC SUPPLEMENTAL FILING	10/2017	DP	RJP	DGG	ENG. APPROVAL	DATE	DATE		MOTT MACDONALD		STA. 2465+38 TO STA. 2515+73			
					5	ISSUED FOR IMPLEMENTATION PLAN	05/2018	RJR	RJP	DGG	P.M. APPROVAL	DATE	DATE				SCALE	DRAWING NO.	REVISION	
											JEW	04/2017					1" = 200'	STLP-A-054	5	

OWNERSHIP / FOOTAGE	1245 1102'	1289 798'	1339 1456'	1342 1471'	1256 133'	1272 122'
STATIONING	2515+73	2528+75	2534+73	2548+15	2552+88	2565+41
	2501+04 CENTERLINE OF STREAM SMO-JUP-003 2521+05 EDGE OF STREAM SMO-TMA-008 2521+05 EDGE OF STREAM SMO-TMA-006	2521+13 PROPERTY LINE	2521+13 PROPERTY LINE 2538+28 EDGE OF GRAVEL 2538+34 CENTERLINE OF FARM ROAD 2538+40 EDGE OF GRAVEL 2538+45 22' 3000' LT 2540+02 22' 3000' LT 2540+02 22' 3000' RT 2540+02 22' 3000' RT	2548+15 PROPERTY LINE 2551+38 EDGE OF GRAVEL 2551+38 CENTERLINE OF FIELD ROAD 2551+46 EDGE OF GRAVEL 2551+78 CENTERLINE OF DITCH	2552+88 2562+74 CENTERLINE OF STREAM SMO-JUP-001 2562+78 CENTERLINE OF DITCH 2564+18 PROPERTY LINE 2564+18 PROPERTY LINE	



MATERIAL & COATING	5082' (1)											
DESIGN FACTOR	0.72											
CONSTRUCTION METHOD	OPEN CUT	OPEN CUT (FLUMED)	OPEN CUT	OPEN CUT (FLUMED)	OPEN CUT					OPEN CUT (FLUMED)	OPEN CUT	
PIPELINE COVER	7' MIN.											
SOILS	66066	64016	64024	64016	64024	64016	64024	66066	64024	66066	64016	66066
LAND USE	AG			F	OW	F	AG			OL	AG	



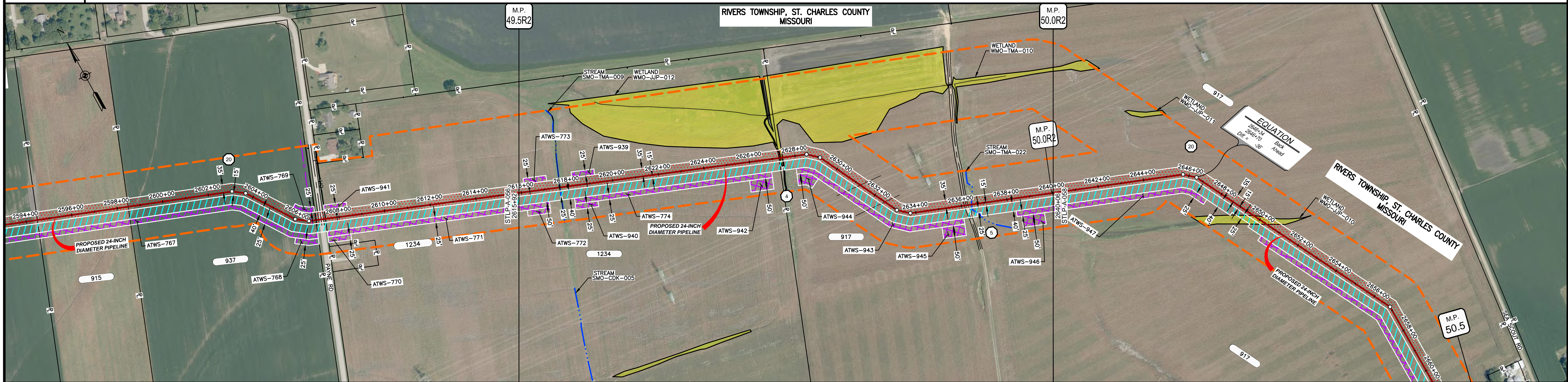
NOTES:
 1. THE IMAGERY SHOWN WAS PROVIDED BY AERIAL DATA SERVICES, 2016. ADDITIONAL IMAGERY SUPPLEMENTED FROM USFWS-NWI AND USGS.
 2. EXISTING FEATURES SHOWN WERE SURVEYED BY MOTT MACDONALD AND DIGITIZED FROM IMAGERY. ALL LOCATIONS ARE APPROXIMATE AND SHALL BE VERIFIED BY CONTRACTOR.

MATERIAL		REFERENCE DRAWINGS		REVISIONS				APPROVALS		PREPARED FOR		SPIRE STL PIPELINE PROJECT			
TAG	QUANTITY	DESCRIPTION	DWG. NO.	TITLE	NO.	REVISIONS	DATE	DRAWN	CK	APPR	DRAWN BY	DATE	SCALE PLAN: 1" = 200'	SCALE PROFILE H: 1" = 200'	SCALE PROFILE V: 1" = 200'
1	5082'	PIPE, 24.000" OD X 0.375" WT, API-5L, X70, DSAW, FBE COATED			1	ISSUE FOR FERC	01/2017	GH	EB	DGG	DP	03/2017			
					2	AMENDMENT TO FERC	04/2017	KAM	RJP	DGG	CHECKED BY	DATE			
					4	FERC SUPPLEMENTAL FILING	10/2017	DP	RJP	DGG	RJP	03/2017			
					5	ISSUED FOR IMPLEMENTATION PLAN	05/2018	RJR	RJP	DGG	ENG. APPROVAL	DATE	CLIENT APPROVAL		
											DGG	04/2017			
											P.M. APPROVAL	DATE			
											JEV	04/2017			

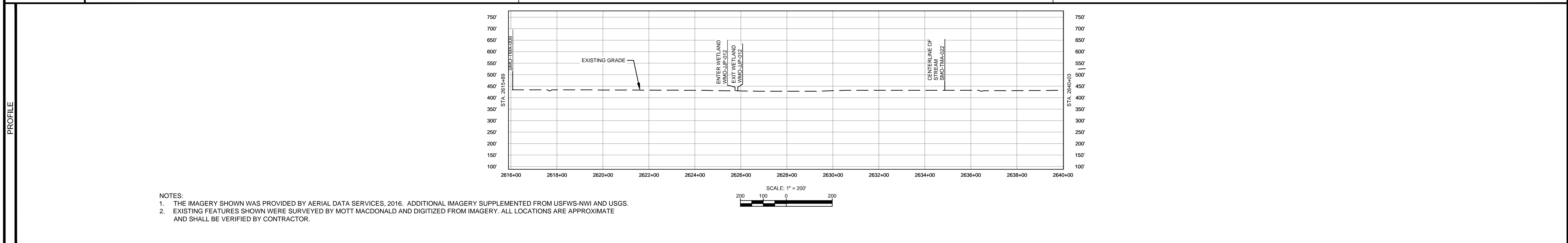
M M
 MOTT MACDONALD

SCALE: 1" = 200'
 DRAWING NO.: STLP-A-055
 REVISION: 5

OWNERSHIP / FOOTAGE		2615+92	1234 MO-SC-323.000 MEYER AG 1139'	2627+31	917 MO-SC-324.000 SAALE FARMS 1275'	2640+06
STATIONING			2617+70 CENTERLINE OF STREAM SMO-TMA-009	2624+50 ESTIMATED MIPPOINT OF FIELD ROAD 2624+50 CENTERLINE OF FIELD ROAD 2624+98 ENTER WETLAND WMO-JUP-012 2624+98 EDGE OF DIRT 2624+53 ENTER WETLAND WMO-JUP-012 2624+53 CENTERLINE OF FIELD ROAD 2624+53 EDGE OF DIRT 2624+53 CENTERLINE OF FIELD ROAD	2631+02 ESTIMATED MIPPOINT OF OVERHEAD TRANSMISSION LINES 2631+02 CENTERLINE OF FIELD ROAD 2631+02 EDGE OF DIRT 2631+02 CENTERLINE OF FIELD ROAD 2631+02 EDGE OF DIRT 2631+02 CENTERLINE OF FIELD ROAD	2639+48 CENTERLINE OF STREAM SMO-TMA-022



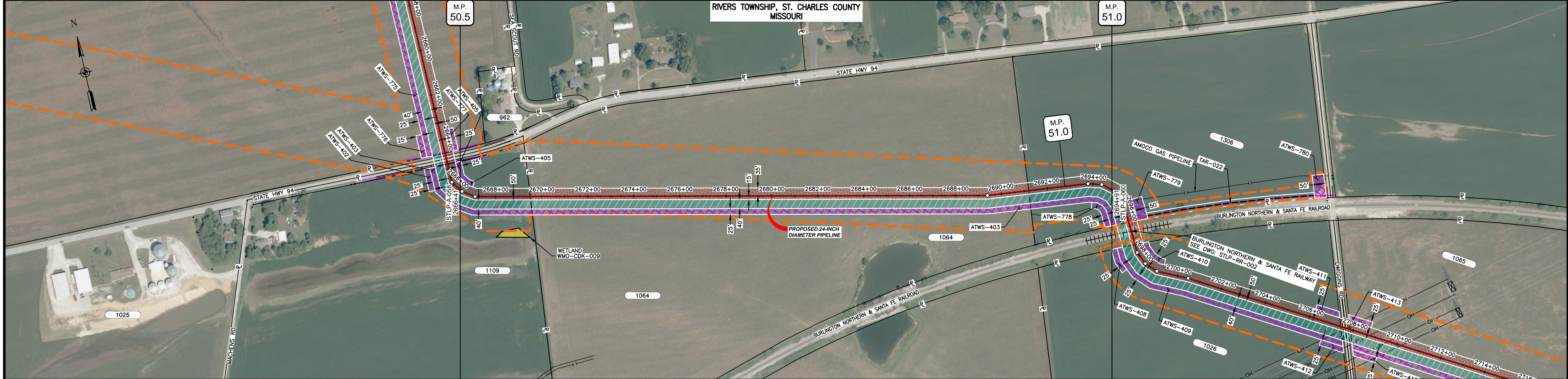
CLASS LOCATION/MAOP			CLASS 1 / 1440 PSIG	
MATERIAL & COATING		2615+92	2414' (1)	2640+06
DESIGN FACTOR			0.72	
CONSTRUCTION METHOD			OPEN CUT	
PIPELINE COVER			7' MIN.	
SOILS			64016	66100
LAND USE				



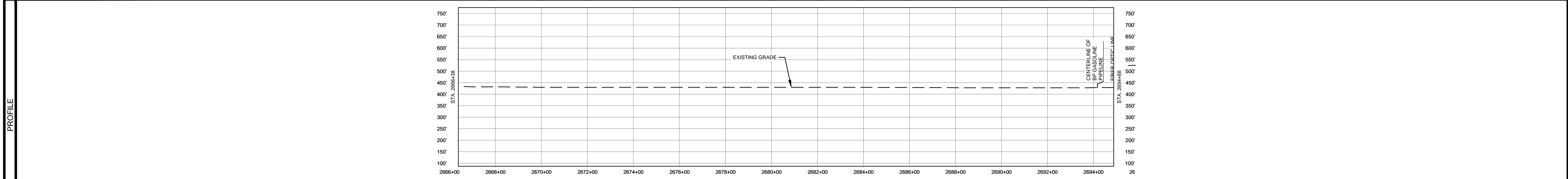
NOTES:
 1. THE IMAGERY SHOWN WAS PROVIDED BY AERIAL DATA SERVICES, 2016. ADDITIONAL IMAGERY SUPPLEMENTED FROM USFWS-NWI AND USGS.
 2. EXISTING FEATURES SHOWN WERE SURVEYED BY MOTT MACDONALD AND DIGITIZED FROM IMAGERY. ALL LOCATIONS ARE APPROXIMATE AND SHALL BE VERIFIED BY CONTRACTOR.

MATERIAL		REFERENCE DRAWINGS		REVISIONS				APPROVALS		SCALE PLAN:		PREPARED FOR		SPIRE STL PIPELINE PROJECT						
TAG	QUANTITY	DESCRIPTION	DWG. NO.	TITLE	NO.	REVISIONS	DATE	DRAWN	CK	APPR	DRAWN BY	DATE	SCALE PLAN:	SCALE PROFILE H:	SCALE PROFILE V:	PREPARED BY	SCALE	DRAWING NO.	REVISION	
1	2414'	PIPE, 24.000" OD X 0.375" WT, API-5L, X70, DSAW, FBE COATED			1	ISSUE FOR FERC	01/2017	GH	EB	DGG	DP	03/2017	1" = 200'	1" = 200'	1" = 200'	Spire STL Pipeline MOTT MACDONALD	1" = 200' STLPA-057	5		
					2	AMENDMENT TO FERC	04/2017	KAM	RJP	DGG										
					4	FERC SUPPLEMENTAL FILING	10/2017	DP	RJP	DGG										
					5	ISSUED FOR IMPLEMENTATION PLAN	05/2018	RJR	RJP	DGG										
											JEV	04/2017								

OWNERSHIP / FOOTAGE		1109 310'	1064 2169'	1306 371'
STATIONING		2666+41	2694+91	2694+91



CLASS LOCATION/MAOP	CLASS I / 1440 PSIG
MATERIAL & COATING	2850' (1)
DESIGN FACTOR	0.72
CONSTRUCTION METHOD	OPEN CUT
PIPELINE COVER	7' MIN.
SOILS	66019
LAND USE	AG

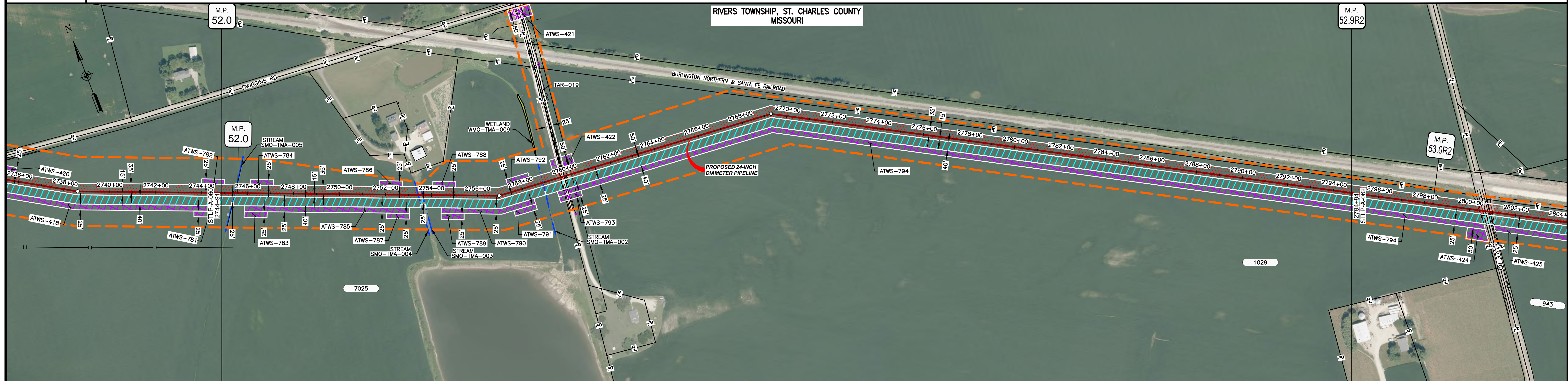


NOTES:
 1. THE IMAGERY SHOWN WAS PROVIDED BY AERIAL DATA SERVICES, 2016. ADDITIONAL IMAGERY SUPPLEMENTED FROM USFWS-NWI AND USGS.
 2. EXISTING FEATURES SHOWN WERE SURVEYED BY MOTT MACDONALD AND DIGITIZED FROM IMAGERY. ALL LOCATIONS ARE APPROXIMATE AND SHALL BE VERIFIED BY CONTRACTOR.

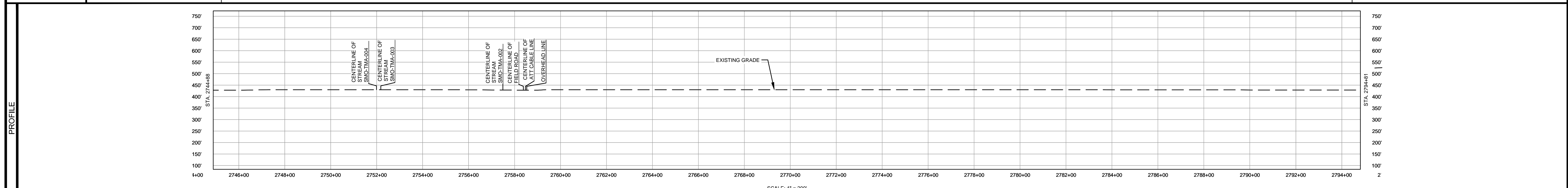
MATERIAL		REFERENCE DRAWINGS		REVISIONS				APPROVALS		PREPARED FOR		SPIRE STL PIPELINE PROJECT	
TAG	QUANTITY	DESCRIPTION	DWG. NO.	TITLE	NO.	REVISIONS	DATE	DRAWN	CK	APPR	DRAWN BY	DATE	SCALE PLAN: 1" = 200'
1	2850'	PIPE, 24.000" OD X 0.375" WT, API-5L, X70, DSAW, FBE COATED	STLP-RR-002	SITE-SPECIFIC RAIL ROAD CROSSING DETAIL	1	ISSUE FOR FERC	01/2017	GH	EB	DGG	DP	03/2017	SCALE PROFILE H: 1" = 200'
					2	AMENDMENT TO FERC	04/2017	KAM	RJP	DGG	CHECKED BY	DATE	SCALE PROFILE V: 1" = 200'
					4	FERC SUPPLEMENTAL FILING	10/2017	DP	RJP	DGG	GH	03/2017	
					5	ISSUED FOR IMPLEMENTATION PLAN	05/2018	RJR	RJP	DGG	ENG. APPROVAL	DATE	CLIENT APPROVAL
											DGG	04/2017	DATE
											P.M. APPROVAL	DATE	
											JEV	04/2017	

Spire STL Pipeline
 PREPARED BY: **M M**
MOTT MACDONALD
 SCALE: 1" = 200'
 DRAWING NO.: STLP-A-059
 REVISION: 5

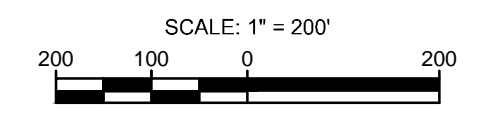
OWNERSHIP / FOOTAGE	2744+91	7025 1483'	2769+74	1029 3510'	2794+84
STATIONING	2746+46 CENTERLINE OF STREAM SMO-TMA-005 2746+46 CENTERLINE OF DITCH 2753+44 CENTERLINE OF STREAM SMO-TMA-004 2753+44 CENTERLINE OF STREAM SMO-TMA-003 2759+45 CENTERLINE OF STREAM SMO-TMA-002 2759+45 PROPERTY LINE 2759+45 EDGE OF GRAVEL 2759+45 CENTERLINE OF FIELD ROAD 2759+45 EDGE OF GRAVEL 2759+45 CENTERLINE OF ATT CABLE LINE 2760+46 OVERHEAD LINE 2760+46 UTILITY POLE 191 L.I. 2769+74 17" 2" 1/2" L.I. 2769+74 17" 2" 1/2" L.I.				



CLASS LOCATION/MAOP	CLASS I / 1440 PSIG				
MATERIAL & COATING	4993' (1)				
DESIGN FACTOR	0.72				
CONSTRUCTION METHOD	OPEN CUT	OPEN CUT (FLUMED)	OPEN CUT	OPEN CUT (FLUMED)	OPEN CUT
PIPELINE COVER	7' MIN.				
SOILS	66059	66019		66059	66110
LAND USE		AG	OL	AG	AG



NOTES:
 1. THE IMAGERY SHOWN WAS PROVIDED BY AERIAL DATA SERVICES, 2016. ADDITIONAL IMAGERY SUPPLEMENTED FROM USFWS-NWI AND USGS.
 2. EXISTING FEATURES SHOWN WERE SURVEYED BY MOTT MACDONALD AND DIGITIZED FROM IMAGERY. ALL LOCATIONS ARE APPROXIMATE AND SHALL BE VERIFIED BY CONTRACTOR.

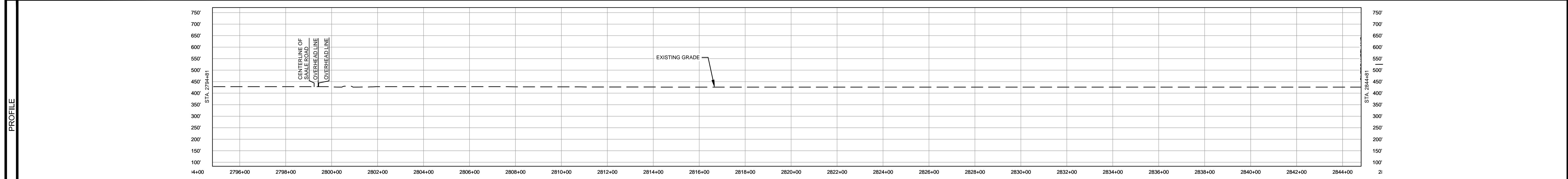


MATERIAL		REFERENCE DRAWINGS		REVISIONS				APPROVALS		SCALE PLAN: 1" = 200'		PREPARED FOR		SPIRE STL PIPELINE PROJECT		
TAG	QUANTITY	DESCRIPTION	DWG. NO.	TITLE	NO.	REVISIONS	DATE	DRAWN	CK	APPR	DRAWN BY	DATE			ALIGNMENT SHEET	
1	4993'	PIPE, 24.000" OD X 0.375" WT, API-5L, X70, DSAW, FBE COATED			1	ISSUE FOR FERC	01/2017	GH	EB	DGG	DP	03/2017			PROPOSED 24-INCH DIAMETER PIPELINE	
					2	AMENDMENT TO FERC	04/2017	DP	WH	DGG	CHECKED BY	DATE	CLIENT APPROVAL		ST. CHARLES COUNTY, MISSOURI	
					4	FERC SUPPLEMENTAL FILING	10/2017	DP	RJP	DGG	RJP	03/2017	PREPARED BY		STA. 2744+91 TO STA. 2794+84	
					5	ISSUED FOR IMPLEMENTATION PLAN	05/2018	RJR	RJP	DGG	ENG. APPROVAL	DATE	DATE		SCALE	
											D.G.G.	04/2017	DATE		DRAWING NO.	
											P.M. APPROVAL	DATE	DATE		REVISION	
											J.E.W.	04/2017	DATE		1" = 200'	
													STA. 2744+91 TO STA. 2794+84		STLP-A-061	
													STA. 2744+91 TO STA. 2794+84		5	

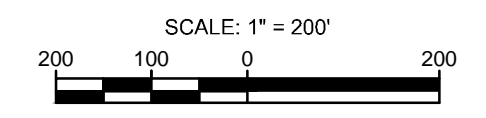
OWNERSHIP / FOOTAGE	2794+84	1029 586'	2800+70	943 409'	2804+79	1041 1970'	2824+49	1308 539'	2828+88	7030 466'	2834+54	991 1030'	2844+84
STATIONING	2804+50 CENTERLINE OF DITCH 2804+50 EDGE OF PAVEMENT 2804+70 CENTERLINE OF SALE ROAD 2804+70 PROPERTY LINE 2804+81 EDGE OF PAVEMENT 2804+81 OVERHEAD LINE 2804+81 OVERHEAD LINE 2804+81 CENTERLINE OF DITCH 2804+79 PROPERTY LINE 2811+50 CENTERLINE OF DITCH 2824+49 PROPERTY LINE 2828+88 PROPERTY LINE 2834+54 PROPERTY LINE 2844+84												



CLASS LOCATION/MAOP	CLASS 1 / 1440 PSIG												
MATERIAL & COATING	<table border="1"> <tr> <td>2794+84</td> <td>2800+29</td> <td>2801+09</td> <td>2844+84</td> </tr> <tr> <td>545'</td> <td>80'</td> <td>4375'</td> <td></td> </tr> <tr> <td>1</td> <td>2</td> <td>1</td> <td></td> </tr> </table>	2794+84	2800+29	2801+09	2844+84	545'	80'	4375'		1	2	1	
2794+84	2800+29	2801+09	2844+84										
545'	80'	4375'											
1	2	1											
DESIGN FACTOR	0.72	0.6	0.72										
CONSTRUCTION METHOD	OPEN CUT	BORE	OPEN CUT										
PIPELINE COVER	7 MIN.												
SOILS	66110												
LAND USE	AG	OL D OL	AG										

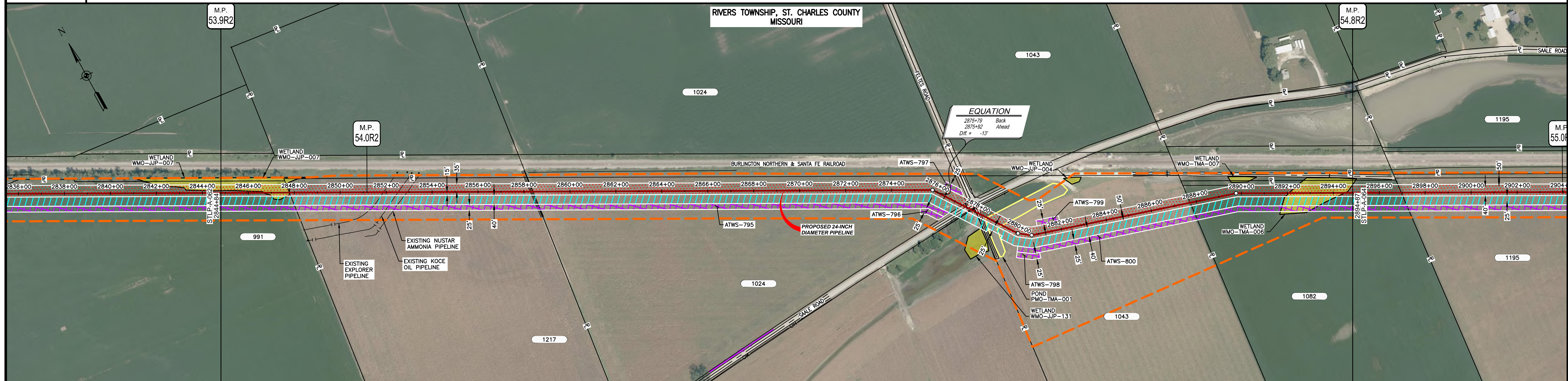


NOTES:
 1. THE IMAGERY SHOWN WAS PROVIDED BY AERIAL DATA SERVICES, 2016. ADDITIONAL IMAGERY SUPPLEMENTED FROM USFWS-NWI AND USGS.
 2. EXISTING FEATURES SHOWN WERE SURVEYED BY MOTT MACDONALD AND DIGITIZED FROM IMAGERY. ALL LOCATIONS ARE APPROXIMATE AND SHALL BE VERIFIED BY CONTRACTOR.

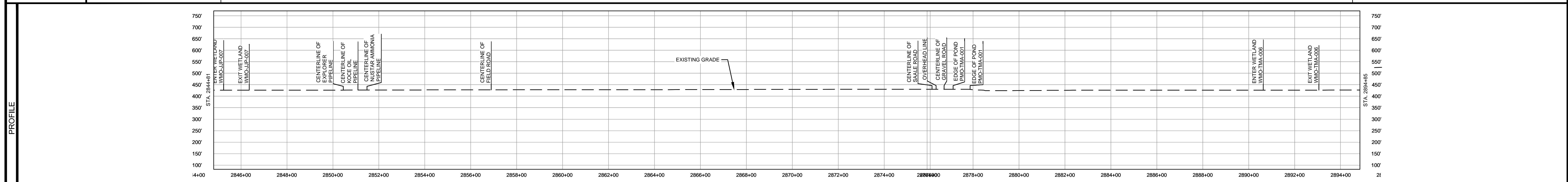


MATERIAL		REFERENCE DRAWINGS		REVISIONS				APPROVALS		SCALE PLAN:		PREPARED FOR		SPIRE STL PIPELINE PROJECT	
TAG	QUANTITY	DESCRIPTION	DWG. NO.	TITLE	NO.	REVISIONS	DATE	DRAWN	CK	APPR	DRAWN BY	DATE	SCALE PLAN:	SPIRE STL Pipeline	
1	4920'	PIPE, 24.000" OD X 0.375" WT, API-5L, X70, DSAW, FBE COATED			1	ISSUE FOR FERC	01/2017	GH	EB	DGG	DP	07/2017	1" = 200'	ALIGNMENT SHEET	
2	80'	PIPE, 24.000" OD X 0.500" WT, API-5L, X70, DSAW, FBE/ARO COATED			2	AMENDMENT TO FERC	04/2017	DP	WH	DGG	CHECKED BY	DATE	SCALE PROFILE H: 1" = 200'	PROPOSED 24-INCH DIAMETER PIPELINE	
					3	FERC SUPPLEMENTAL FILING	07/2017	KAM	RJP	DGG	RJP	07/2017	SCALE PROFILE V: 1" = 200'	ST. CHARLES COUNTY, MISSOURI	
					4	FERC SUPPLEMENTAL FILING	10/2017	DP	RJP	DGG	ENG. APPROVAL	DATE	CLIENT APPROVAL	STA. 2794+84 TO STA. 2844+84	
					5	ISSUED FOR IMPLEMENTATION PLAN	05/2018	RJR	RJP	DGG	D.G.G.	07/2017	DATE	SCALE	DRAWING NO.
											P.M. APPROVAL	DATE	1" = 200'	STLP-A-062	REVISION
											J.E.W.	07/2017			5

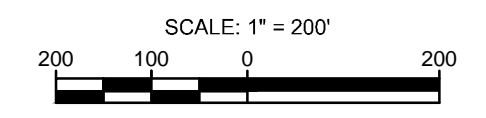
OWNERSHIP / FOOTAGE	2844+84	991 297'	1217 1060'	2868+41	1042 1951'	1043 909'	2874+05	1082 713'	2894+87
STATIONING	<p>2846+10 CENTER WETLAND WMO-JUP-007</p> <p>2841+51 EXIT WETLAND WMO-JUP-007</p> <p>2841+51 PROPERTY LINE</p> <p>2851+01 CENTERLINE OF EXPLORER PIPELINE</p> <p>2852+54 CENTERLINE OF KOCE OIL PIPELINE</p> <p>2852+04 CENTERLINE OF MUSTAR AMMONIA PIPELINE</p> <p>2868+35 CENTERLINE OF FIELD ROAD</p> <p>2868+41 PROPERTY LINE</p> <p>2874+50 23'00" UTILITY POLE (9' LT.)</p> <p>2874+50 UTILITY POLE (9' LT.)</p> <p>2874+50 CENTERLINE OF PAVEMENT</p> <p>2874+51 CENTERLINE OF SALE ROAD</p> <p>2874+76 SIDE OF RT. 1195</p> <p>2874+76 CENTERLINE OF PAVEMENT</p> <p>2874+76 OVERHEAD LINE</p> <p>2878+05 PROPERTY LINE</p> <p>2878+05 CENTERLINE OF GRAVEL</p> <p>2878+05 CENTERLINE OF GRAVEL ROAD</p> <p>2878+05 CENTERLINE OF GRAVEL</p> <p>2878+05 EDGE OF FOND POND WMO-TMA-001</p> <p>2878+05 EDGE OF FOND POND WMO-TMA-001</p> <p>2878+05 15'00" UTILITY POLE (9' LT.)</p> <p>2882+05 15'00" UTILITY POLE (9' LT.)</p> <p>2887+74 PROPERTY LINE</p> <p>2882+25 11'00" UTILITY POLE (9' LT.)</p> <p>2884+08 ENTER WETLAND WMO-TMA-006</p> <p>2894+51 EXIT WETLAND WMO-TMA-006</p>								



CLASS LOCATION/MAOP	CLASS 1 / 1440 PSIG													
MATERIAL & COATING	2844+84			2877+28			2879+42			2894+87				
DESIGN FACTOR	0.72			0.6			0.72							
CONSTRUCTION METHOD	OPEN CUT			BORE			OPEN CUT							
PIPELINE COVER	7' MIN.													
SOILS	66110			66019			66110			66019				
LAND USE	AG	W		AG			OL	D	AG	OW		AG	W	AG

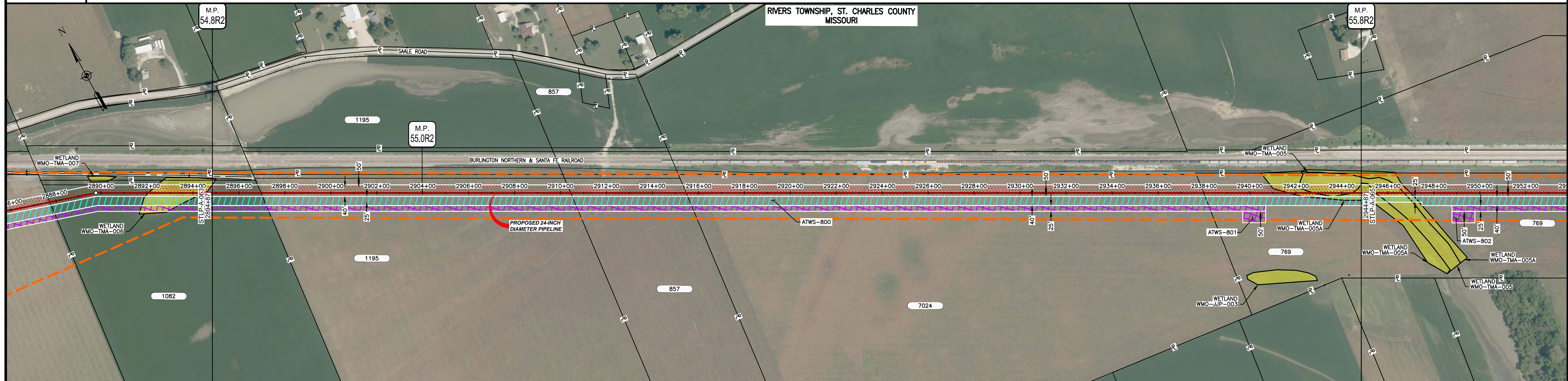


NOTES:
 1. THE IMAGERY SHOWN WAS PROVIDED BY AERIAL DATA SERVICES, 2016. ADDITIONAL IMAGERY SUPPLEMENTED FROM USFWS-NWI AND USGS.
 2. EXISTING FEATURES SHOWN WERE SURVEYED BY MOTT MACDONALD AND DIGITIZED FROM IMAGERY. ALL LOCATIONS ARE APPROXIMATE AND SHALL BE VERIFIED BY CONTRACTOR.

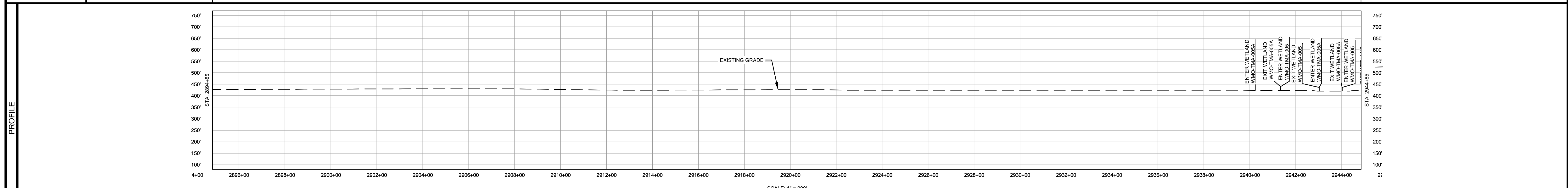


MATERIAL			REFERENCE DRAWINGS			REVISIONS				APPROVALS		PREPARED FOR		SPIRE STL PIPELINE PROJECT		
TAG	QUANTITY	DESCRIPTION	DWG. NO.	TITLE	NO.	REVISIONS	DATE	DRAWN	CK	APPR	DRAWN BY	DATE	SCALE PLAN: 1" = 200'	Spire STL Pipeline ALIGNMENT SHEET PROPOSED 24-INCH DIAMETER PIPELINE ST. CHARLES COUNTY, MISSOURI STA. 2844+84 TO STA. 2894+87		
1	3229'	PIPE, 24.000" OD X 0.375" WT, API-5L, X70, DSAW, FBE COATED			1	ISSUE FOR FERC	01/2017	GH	EB	DGG	DP	07/2017	SCALE PROFILE H: 1" = 200'			
2	216'	PIPE, 24.000" OD X 0.500" WT, API-5L, X70, DSAW, FBE/ARO COATED			2	AMENDMENT TO FERC	04/2017	DP	WH	DGG	CHECKED BY	DATE	SCALE PROFILE V: 1" = 200'			
3	1545'	PIPE, 24.000" OD X 0.500" WT, API-5L, X70, DSAW, FBE COATED			3	FERC SUPPLEMENTAL FILING	07/2017	KAM	RJP	DGG	RJP	07/2017	CLIENT APPROVAL			
					4	FERC SUPPLEMENTAL FILING	10/2017	DP	RJP	DGG	ENG. APPROVAL	DATE	PREPARED BY			
					5	ISSUED FOR IMPLEMENTATION PLAN	05/2018	RJR	RJP	DGG	D.G.G.	07/2017	M M MOTT MACDONALD			
											P.M. APPROVAL	DATE		SCALE		
											J.E.W.	07/2017		DRAWING NO.		
													1" = 200'	STLP-A-063	REVISION	5

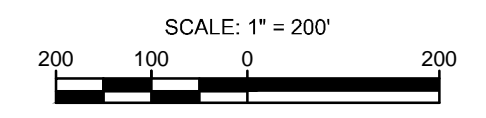
OWNERSHIP / FOOTAGE	2894+87	1082 210'	2894+87	1195 1348'	2910+45	857 503'	2915+68	7024 2252'	2938+00	769 687'	2944+87	
STATIONING	2894+87 PROPERTY LINE											
	2910+45 PROPERTY LINE											
	2915+68 PROPERTY LINE											
	2938+00 PROPERTY LINE											
	2941+71 ENTER WETLAND WMO-TMA-005A											
	2942+75 EXIT WETLAND WMO-TMA-005A											
	2942+75 ENTER WETLAND WMO-TMA-005											
	2944+45 EXIT WETLAND WMO-TMA-005											
	2944+45 ENTER WETLAND WMO-TMA-005A											



CLASS LOCATION/MAOP	CLASS I / 1440 PSIG											
MATERIAL & COATING	5000' (3)											
DESIGN FACTOR	0.72											
CONSTRUCTION METHOD	OPEN CUT											
PIPELINE COVER	7' MIN.											
SOILS	66019	66110	13598	66110								
LAND USE	AG											W

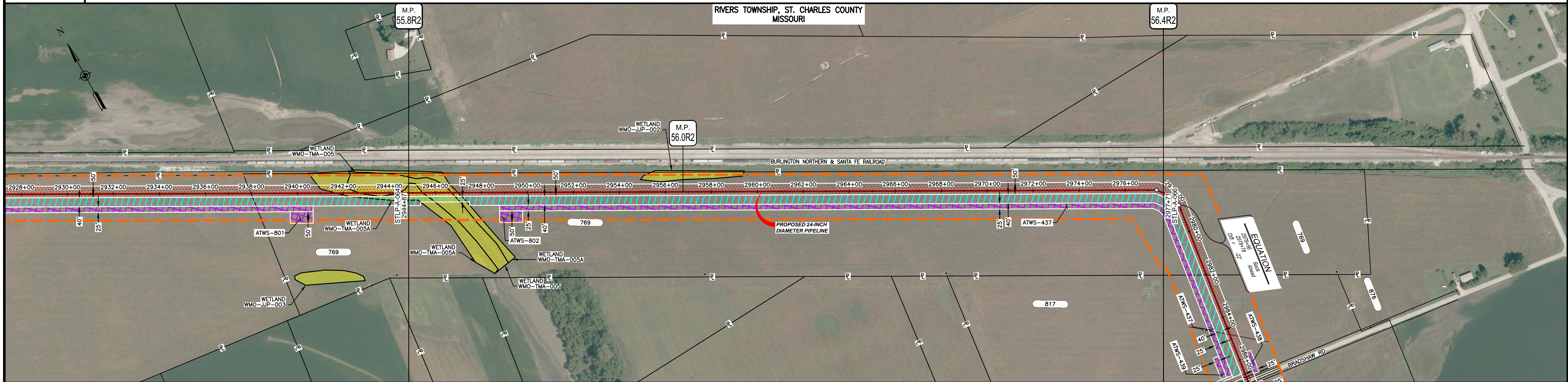


NOTES:
 1. THE IMAGERY SHOWN WAS PROVIDED BY AERIAL DATA SERVICES, 2016. ADDITIONAL IMAGERY SUPPLEMENTED FROM USFWS-NWI AND USGS.
 2. EXISTING FEATURES SHOWN WERE SURVEYED BY MOTT MACDONALD AND DIGITIZED FROM IMAGERY. ALL LOCATIONS ARE APPROXIMATE AND SHALL BE VERIFIED BY CONTRACTOR.

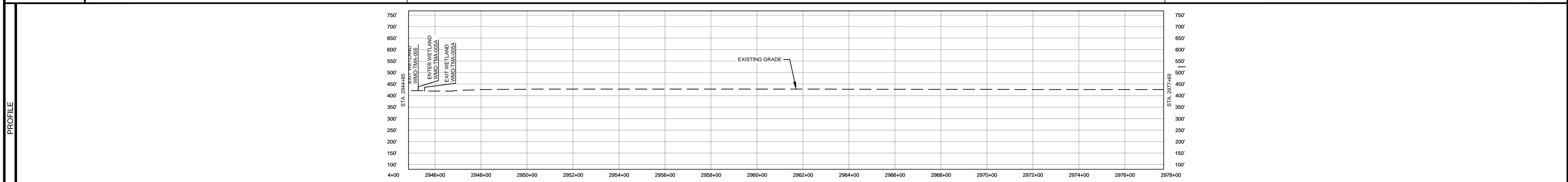


MATERIAL			REFERENCE DRAWINGS		REVISIONS				APPROVALS			PREPARED FOR		SPIRE STL PIPELINE PROJECT		
TAG	QUANTITY	DESCRIPTION	DWG. NO.	TITLE	NO.	REVISIONS	DATE	DRAWN	CK	APPR	DRAWN BY	DATE	SCALE PLAN:	SPIRE STL Pipeline		
3	5000'	PIPE, 24.000" OD X 0.500" WT, API-5L, X70, DSAW, FBE COATED			1	ISSUE FOR FERC	01/2017	GH	EB	DGG	DP	03/2017	SCALE PROFILE H: 1" = 200'			
					2	AMENDMENT TO FERC	04/2017	KAM	WH	DGG	CHECKED BY	DATE	SCALE PROFILE V: 1" = 200'			
					4	FERC SUPPLEMENTAL FILING	10/2017	DP	RJP	DGG	RJP	03/2017	CLIENT APPROVAL			
					5	ISSUED FOR IMPLEMENTATION PLAN	05/2018	RJR	RJP	DGG	ENG. APPROVAL	DATE	PREPARED BY			
											DGG	04/2017	MOTT MACDONALD			
											P.M. APPROVAL	DATE	SCALE	DRAWING NO.	REVISION	
											JEV	04/2017	1" = 200'	STLP-A-064	5	

OWNERSHIP / FOOTAGE		2944+87	3284'	2977+71
STATIONING		2944+87	3284'	2977+71



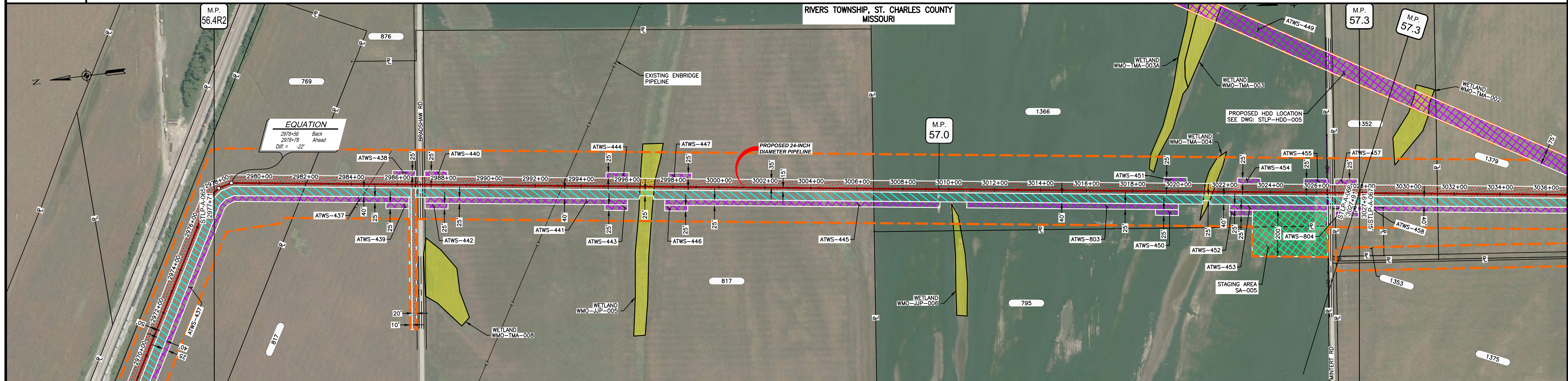
CLASS LOCATION/MAOP		CLASS I / 1440 PSIG
MATERIAL & COATING		3284' (3)
DESIGN FACTOR		0.72
CONSTRUCTION METHOD		OPEN CUT
PIPELINE COVER		7' MIN.
SOILS	66110 13598	66019
LAND USE	W	AG



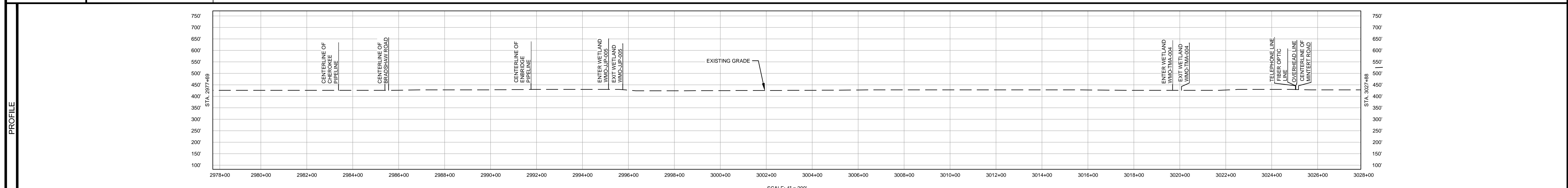
NOTES:
 1. THE IMAGERY SHOWN WAS PROVIDED BY AERIAL DATA SERVICES, 2016. ADDITIONAL IMAGERY SUPPLEMENTED FROM USFWS-NWI AND USGS.
 2. EXISTING FEATURES SHOWN WERE SURVEYED BY MOTT MACDONALD AND DIGITIZED FROM IMAGERY. ALL LOCATIONS ARE APPROXIMATE AND SHALL BE VERIFIED BY CONTRACTOR.

MATERIAL			REFERENCE DRAWINGS		REVISIONS				APPROVALS		PREPARED FOR		SPIRE STL PIPELINE PROJECT		
TAG	QUANTITY	DESCRIPTION	DWG. NO.	TITLE	NO.	REVISIONS	DATE	DRAWN	CK	APPR	DRAWN BY	DATE	SCALE PLAN: 1" = 200'		
3	3284'	PIPE, 24.000" OD X 0.500" WT, API-5L, X70, DSAW, FBE COATED			1	ISSUE FOR FERC	01/2017	GH	EB	DGG	DP	04/2017	SCALE PROFILE H: 1" = 200'		
					2	AMENDMENT TO FERC	04/2017	KAM	WH	DGG	CHECKED BY	DATE	SCALE PROFILE V: 1" = 200'		
					4	FERC SUPPLEMENTAL FILING	10/2017	DP	RJP	DGG	RJP	04/2017	CLIENT APPROVAL		
					5	ISSUED FOR IMPLEMENTATION PLAN	05/2018	RJR	RJP	DGG	ENG. APPROVAL	DATE	PREPARED BY		
											DGG	04/2017	M M		
											P.M. APPROVAL	DATE	MOTT MACDONALD		
											JEW	04/2017	SCALE: 1" = 200'		
													DRAWING NO. STLPA-065		
													REVISION 5		

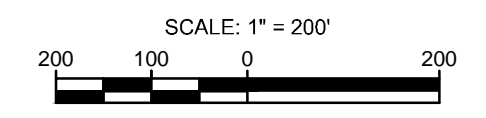
OWNERSHIP / FOOTAGE	2977+71	769 413'	2982+00	817 2469'	3006+75	1366 1974'	3027+49	1382 34 108'
STATIONING	2977+71	2978+00	2982+00	2984+00	2986+00	2988+00	2990+00	2992+00



CLASS LOCATION/MAOP	CLASS I / 1440 PSIG										
MATERIAL & COATING	2977+71	2988+41	2987+41	3002+00	3027+49	3027+49	3027+49	3027+49	3027+49	3027+49	3027+49
DESIGN FACTOR	0.72	0.6	0.72	0.6	0.72	0.6	0.72	0.6	0.72	0.6	0.72
CONSTRUCTION METHOD	OPEN CUT	BORE	OPEN CUT	BORE	OPEN CUT	BORE	OPEN CUT	BORE	OPEN CUT	BORE	OPEN CUT
PIPELINE COVER	7 MIN.										
SOILS	66019	36023	66019	36023	66059	66019	66059	66019	66059	66019	66059
LAND USE	AG	D	AG	W	AG	AG	AG	W	AG	D	AG

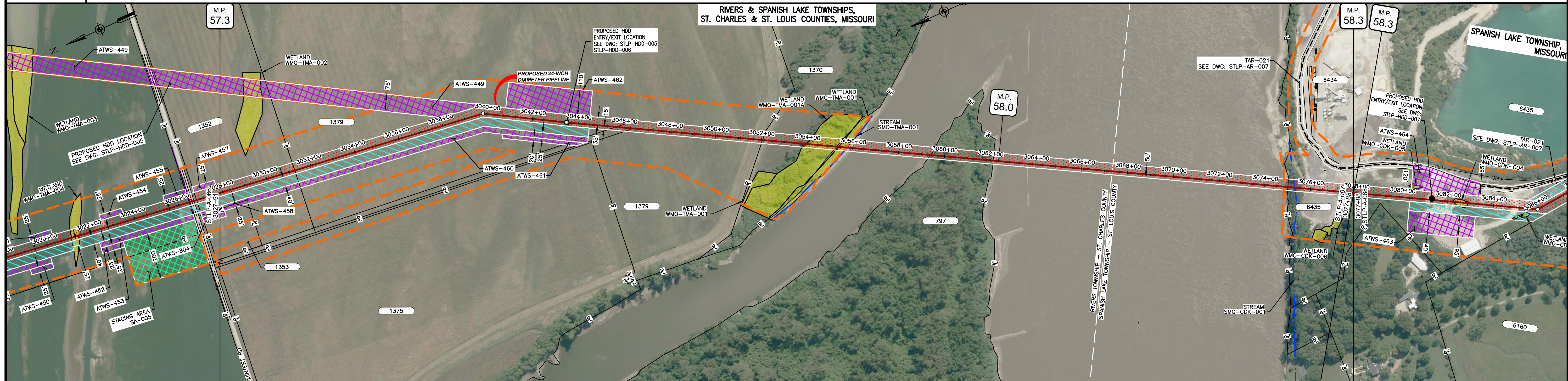


NOTES:
 1. THE IMAGERY SHOWN WAS PROVIDED BY AERIAL DATA SERVICES, 2016. ADDITIONAL IMAGERY SUPPLEMENTED FROM USFWS-NWI AND USGS.
 2. EXISTING FEATURES SHOWN WERE SURVEYED BY MOTT MACDONALD AND DIGITIZED FROM IMAGERY. ALL LOCATIONS ARE APPROXIMATE AND SHALL BE VERIFIED BY CONTRACTOR.

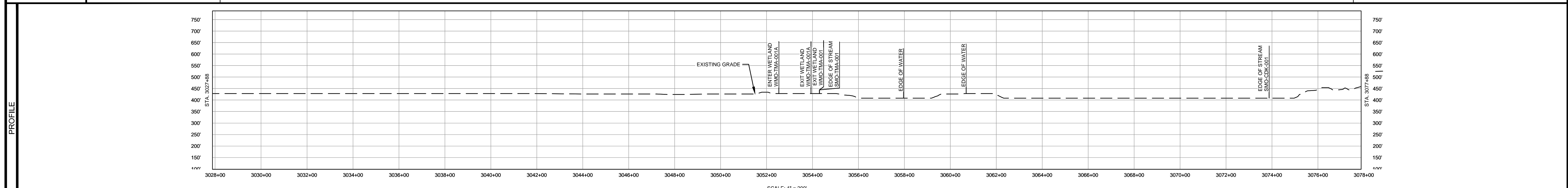


MATERIAL		REFERENCE DRAWINGS		REVISIONS				APPROVALS		PREPARED FOR		SPIRE STL PIPELINE PROJECT	
TAG	QUANTITY	DESCRIPTION	DWG. NO.	TITLE	NO.	REVISIONS	DATE	DRAWN	CK	APPR	DRAWN BY	DATE	SCALE PLAN: 1" = 200'
2	160'	PIPE, 24.000" OD X 0.500" WT, API-5L, X70, DSAW, FBE/ARO COATED	STLP-HDD-005	HDD PROFILE OVERVIEW - MISSOURI RIVER MAINLINE	1	ISSUE FOR FERC	01/2017	GH	EB	DGG	DP	04/2017	SCALE PROFILE H: 1" = 200'
3	4838'	PIPE, 24.000" OD X 0.500" WT, API-5L, X70, DSAW, FBE COATED			2	AMENDMENT TO FERC	04/2017	KAM	WH	DGG	CHECKED BY	DATE	SCALE PROFILE V: 1" = 200'
					4	FERC SUPPLEMENTAL FILING	10/2017	DP	RJP	DGG	RJP	04/2017	
					5	ISSUED FOR IMPLEMENTATION PLAN	05/2018	RJR	RJP	DGG	ENG. APPROVAL	DATE	CLIENT APPROVAL
											P.M. APPROVAL	DATE	DATE
										PREPARED BY		SCALE	
										MOTT MACDONALD		DRAWING NO. STLP-A-066	
												REVISION	
												5	

OWNERSHIP / FOOTAGE	3027+91	1352	338'	3031+28	1379	2078'	3035+07	1370	324'	3035+41	MISSOURI RIVER	797	273'	3039+15	MISSOURI RIVER	6435	289'	3077+91	
STATIONING	<p>3027+91 PROPERTY LINE</p> <p>3031+28 PROPERTY LINE</p> <p>3035+07 PROPERTY LINE</p> <p>3035+41 PROPERTY LINE</p> <p>3039+15 PROPERTY LINE</p> <p>3043+02 PROPERTY LINE</p> <p>3045+11 PROPERTY LINE</p> <p>3049+07 PROPERTY LINE</p> <p>3054+02 PROPERTY LINE</p> <p>3059+15 PROPERTY LINE</p> <p>3077+91 PROPERTY LINE</p>																		



CLASS LOCATION/MAOP	CLASS I / 1440 PSIG																		
MATERIAL & COATING	<p>3027+91</p>																		
DESIGN FACTOR	0.72																		
CONSTRUCTION METHOD	OPEN CUT																		
PIPELINE COVER	7 MIN.																		
SOILS	66059, 66019, 66059, 66019, 66059, 66019, 66059, 66012, 99001, 66126, 99001, 99001, 99000																		
LAND USE	AG, F, W, OW, F, OW, D																		



NOTES:
 1. THE IMAGERY SHOWN WAS PROVIDED BY AERIAL DATA SERVICES, 2016. ADDITIONAL IMAGERY SUPPLEMENTED FROM USFWS-NWI AND USGS.
 2. EXISTING FEATURES SHOWN WERE SURVEYED BY MOTT MACDONALD AND DIGITIZED FROM IMAGERY. ALL LOCATIONS ARE APPROXIMATE AND SHALL BE VERIFIED BY CONTRACTOR.

MATERIAL			REFERENCE DRAWINGS		REVISIONS					APPROVALS		PREPARED FOR		SPIRE STL PIPELINE PROJECT			
TAG	QUANTITY	DESCRIPTION	DWG. NO.	TITLE	NO.	REVISIONS	DATE	DRAWN	CK	APPR	DRAWN BY	DATE	SCALE PLAN:	ALIGNMENT SHEET			
2	3442'	PIPE, 24.000" OD X 0.500" WT, API-5L, X70, DSAW, FBE/ARO COATED	STLP-HDD-005	HDD PROFILE OVERVIEW - MISSOURI RIVER MAINLINE	1	ISSUE FOR FERC	01/2017	GH	EB	DGG	DP	07/2017	SCALE PROFILE H: 1" = 200'	PROPOSED 24-INCH DIAMETER PIPELINE			
3	1558'	PIPE, 24.000" OD X 0.500" WT, API-5L, X70, DSAW, FBE COATED	STLP-HDD-006	HDD PROFILE OVERVIEW - MISSOURI RIVER MAINLINE	2	AMENDMENT TO FERC	04/2017	DP	AK	DGG	CHECKED BY	DATE	SCALE PROFILE V: 1" = 200'	ST. CHARLES AND ST. LOUIS COUNTIES, MISSOURI			
			STLP-HDD-007	HDD PROFILE OVERVIEW - MISSOURI RIVER MAINLINE	3	FERC SUPPLEMENTAL FILING	07/2017	KAM	RJP	DGG	RJP	07/2017	CLIENT APPROVAL	PREPARED BY	STA. 3027+91 TO STA. 3077+91		
			STLP-AR-007	ACCESS ROAD DRAWING	4	FERC SUPPLEMENTAL FILING	10/2017	DP	RJP	DGG	ENG. APPROVAL	DATE	DATE	M M MOTT MACDONALD	SCALE	DRAWING NO.	REVISION
					5	ISSUED FOR IMPLEMENTATION PLAN	05/2018	RJR	RJP	DGG	P.M. APPROVAL	DATE	DATE		1" = 200'	STLP-A-067	5

