

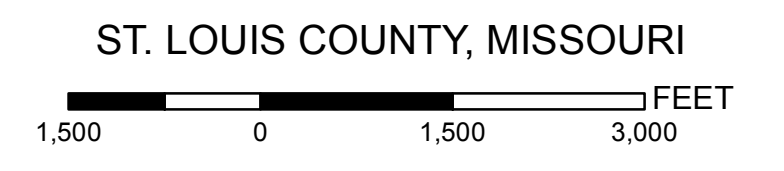
	MILE POST		HIGHWAY		ALIGNMENT SHEET INDEX PAGE NO.		LANDMARK
	PROPOSED M&R FACILITY		MAJOR ROAD		ALIGNMENT SHEET INDEX		WATERBODY
	PROPOSED 24-INCH NORTH COUNTY EXTENSION		LOCAL ROAD		CITY AREA		COUNTY BOUNDARY
			RAILROAD		PARK		STATE BOUNDARY

MAPS COMPILED UTILIZING ESRI BASEMAP.

SPIRE STL PIPELINE PROJECT

ALIGNMENT SHEET INDEX

PROPOSED 24-INCH NORTH COUNTY EXTENSION



ABSOLUTE SCALE:
1:18,000

REFERENCE SCALE:
1 IN = 1,500 FEET

PREPARED FOR

Spire STL Pipeline

PREPARED BY

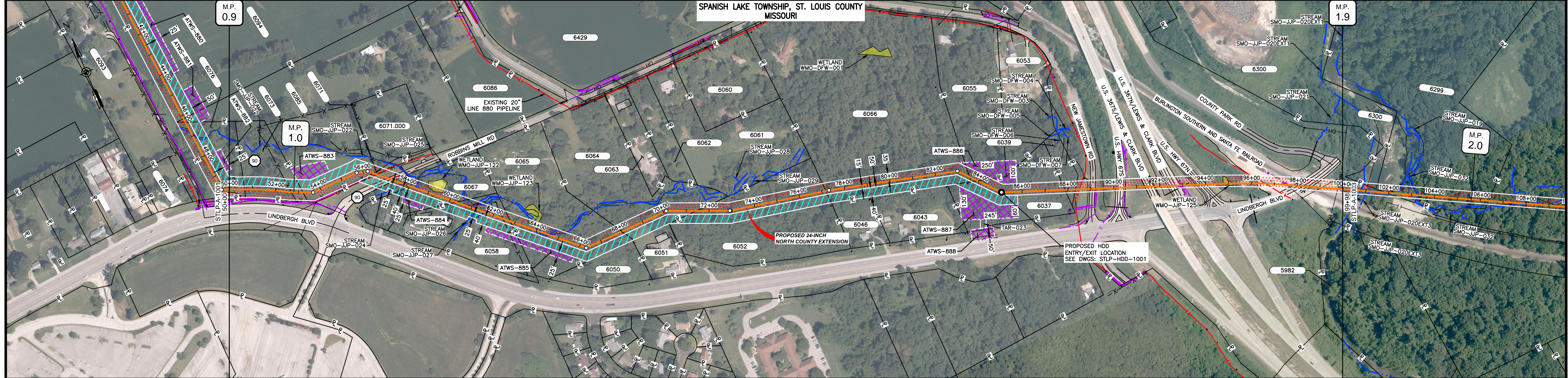
M M

**MOTT
MACDONALD**

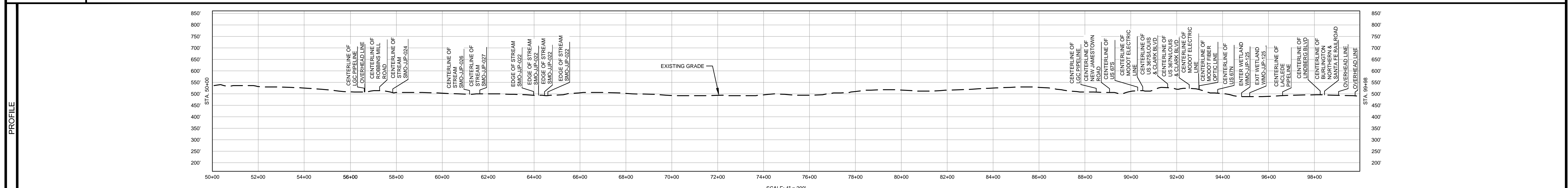
DRAWN BY:	NDK 12/16/2016
CHECKED BY:	EAP 10/03/2017
ENG. APPROVAL:	DG 10/03/2017
APPROVED BY:	JW 10/03/2017
REV. DATE:	10/2017
REVISION:	4
DESC:	FERC SUPPLEMENTAL FILING
DWG. NO:	STLP-ASI-004

© Spire 2017. All rights reserved. This document is the property of Spire STL Pipeline, LLC. It is to be used only for the project and for the purposes stated in the title block. It is not to be distributed, copied, or used for any other purpose without the written consent of Spire STL Pipeline, LLC.

OWNERSHIP / FOOTAGE	50+00	67'	255'	326'	ROBINS MILL ROAD	216'	251'	522'	884+01	345'	71+46	572'	637'	83+55	40'	393'	5	1165'	US HWY 67	99+98
STATIONING	50+00: 50+00 TELEPHONE UTILITY 20' LT. 50+50: 50+50 TELEPHONE UTILITY 20' LT. 51+00: 51+00 TELEPHONE UTILITY 20' LT. 51+50: 51+50 TELEPHONE UTILITY 20' LT. 52+00: 52+00 TELEPHONE UTILITY 20' LT. 52+50: 52+50 TELEPHONE UTILITY 20' LT. 53+00: 53+00 TELEPHONE UTILITY 20' LT. 53+50: 53+50 TELEPHONE UTILITY 20' LT. 54+00: 54+00 TELEPHONE UTILITY 20' LT. 54+50: 54+50 TELEPHONE UTILITY 20' LT. 55+00: 55+00 TELEPHONE UTILITY 20' LT. 55+50: 55+50 TELEPHONE UTILITY 20' LT. 56+00: 56+00 TELEPHONE UTILITY 20' LT. 56+50: 56+50 TELEPHONE UTILITY 20' LT. 57+00: 57+00 TELEPHONE UTILITY 20' LT. 57+50: 57+50 TELEPHONE UTILITY 20' LT. 58+00: 58+00 TELEPHONE UTILITY 20' LT. 58+50: 58+50 TELEPHONE UTILITY 20' LT. 59+00: 59+00 TELEPHONE UTILITY 20' LT. 59+50: 59+50 TELEPHONE UTILITY 20' LT. 60+00: 60+00 TELEPHONE UTILITY 20' LT. 60+50: 60+50 TELEPHONE UTILITY 20' LT. 61+00: 61+00 TELEPHONE UTILITY 20' LT. 61+50: 61+50 TELEPHONE UTILITY 20' LT. 62+00: 62+00 TELEPHONE UTILITY 20' LT. 62+50: 62+50 TELEPHONE UTILITY 20' LT. 63+00: 63+00 TELEPHONE UTILITY 20' LT. 63+50: 63+00 TELEPHONE UTILITY 20' LT. 64+00: 64+00 TELEPHONE UTILITY 20' LT. 64+50: 64+50 TELEPHONE UTILITY 20' LT. 65+00: 65+00 TELEPHONE UTILITY 20' LT. 65+50: 65+00 TELEPHONE UTILITY 20' LT. 66+00: 66+00 TELEPHONE UTILITY 20' LT. 66+50: 66+00 TELEPHONE UTILITY 20' LT. 67+00: 67+00 TELEPHONE UTILITY 20' LT. 67+50: 67+00 TELEPHONE UTILITY 20' LT. 68+00: 68+00 TELEPHONE UTILITY 20' LT. 68+50: 68+00 TELEPHONE UTILITY 20' LT. 69+00: 69+00 TELEPHONE UTILITY 20' LT. 69+50: 69+00 TELEPHONE UTILITY 20' LT. 70+00: 70+00 TELEPHONE UTILITY 20' LT. 70+50: 70+00 TELEPHONE UTILITY 20' LT. 71+00: 71+00 TELEPHONE UTILITY 20' LT. 71+50: 71+00 TELEPHONE UTILITY 20' LT. 72+00: 72+00 TELEPHONE UTILITY 20' LT. 72+50: 72+00 TELEPHONE UTILITY 20' LT. 73+00: 73+00 TELEPHONE UTILITY 20' LT. 73+50: 73+00 TELEPHONE UTILITY 20' LT. 74+00: 74+00 TELEPHONE UTILITY 20' LT. 74+50: 74+00 TELEPHONE UTILITY 20' LT. 75+00: 75+00 TELEPHONE UTILITY 20' LT. 75+50: 75+00 TELEPHONE UTILITY 20' LT. 76+00: 76+00 TELEPHONE UTILITY 20' LT. 76+50: 76+00 TELEPHONE UTILITY 20' LT. 77+00: 77+00 TELEPHONE UTILITY 20' LT. 77+50: 77+00 TELEPHONE UTILITY 20' LT. 78+00: 78+00 TELEPHONE UTILITY 20' LT. 78+50: 78+00 TELEPHONE UTILITY 20' LT. 79+00: 79+00 TELEPHONE UTILITY 20' LT. 79+50: 79+00 TELEPHONE UTILITY 20' LT. 80+00: 80+00 TELEPHONE UTILITY 20' LT. 80+50: 80+00 TELEPHONE UTILITY 20' LT. 81+00: 81+00 TELEPHONE UTILITY 20' LT. 81+50: 81+00 TELEPHONE UTILITY 20' LT. 82+00: 82+00 TELEPHONE UTILITY 20' LT. 82+50: 82+00 TELEPHONE UTILITY 20' LT. 83+00: 83+00 TELEPHONE UTILITY 20' LT. 83+50: 83+00 TELEPHONE UTILITY 20' LT. 84+00: 84+00 TELEPHONE UTILITY 20' LT. 84+50: 84+00 TELEPHONE UTILITY 20' LT. 85+00: 85+00 TELEPHONE UTILITY 20' LT. 85+50: 85+00 TELEPHONE UTILITY 20' LT. 86+00: 86+00 TELEPHONE UTILITY 20' LT. 86+50: 86+00 TELEPHONE UTILITY 20' LT. 87+00: 87+00 TELEPHONE UTILITY 20' LT. 87+50: 87+00 TELEPHONE UTILITY 20' LT. 88+00: 88+00 TELEPHONE UTILITY 20' LT. 88+50: 88+00 TELEPHONE UTILITY 20' LT. 89+00: 89+00 TELEPHONE UTILITY 20' LT. 89+50: 89+00 TELEPHONE UTILITY 20' LT. 90+00: 90+00 TELEPHONE UTILITY 20' LT. 90+50: 90+00 TELEPHONE UTILITY 20' LT. 91+00: 91+00 TELEPHONE UTILITY 20' LT. 91+50: 91+00 TELEPHONE UTILITY 20' LT. 92+00: 92+00 TELEPHONE UTILITY 20' LT. 92+50: 92+00 TELEPHONE UTILITY 20' LT. 93+00: 93+00 TELEPHONE UTILITY 20' LT. 93+50: 93+00 TELEPHONE UTILITY 20' LT. 94+00: 94+00 TELEPHONE UTILITY 20' LT. 94+50: 94+00 TELEPHONE UTILITY 20' LT. 95+00: 95+00 TELEPHONE UTILITY 20' LT. 95+50: 95+00 TELEPHONE UTILITY 20' LT. 96+00: 96+00 TELEPHONE UTILITY 20' LT. 96+50: 96+00 TELEPHONE UTILITY 20' LT. 97+00: 97+00 TELEPHONE UTILITY 20' LT. 97+50: 97+00 TELEPHONE UTILITY 20' LT. 98+00: 98+00 TELEPHONE UTILITY 20' LT. 98+50: 98+00 TELEPHONE UTILITY 20' LT. 99+00: 99+00 TELEPHONE UTILITY 20' LT. 99+50: 99+00 TELEPHONE UTILITY 20' LT. 100+00: 100+00 TELEPHONE UTILITY 20' LT.																			



CLASS LOCATION/MAOP	CLASS II / 1440 PSIG										CLASS III / 1440 PSIG																																																																															
	50+00				66+29								82+27			88+11									98+98																																																																	
MATERIAL & COATING	3			4							3		4																																																																													
DESIGN FACTOR	0.6										0.5																																																																															
CONSTRUCTION METHOD	OPEN CUT										HDD																																																																															
PIPELINE COVER	10' MIN.										5' MIN.																																																																															
SOILS	60165										60003										60004										60025										60223										60005																																							
LAND USE	F			OL							D		F								OW		F								OL		D								OL		D								OL		D								OL		F								W		F								D		F							

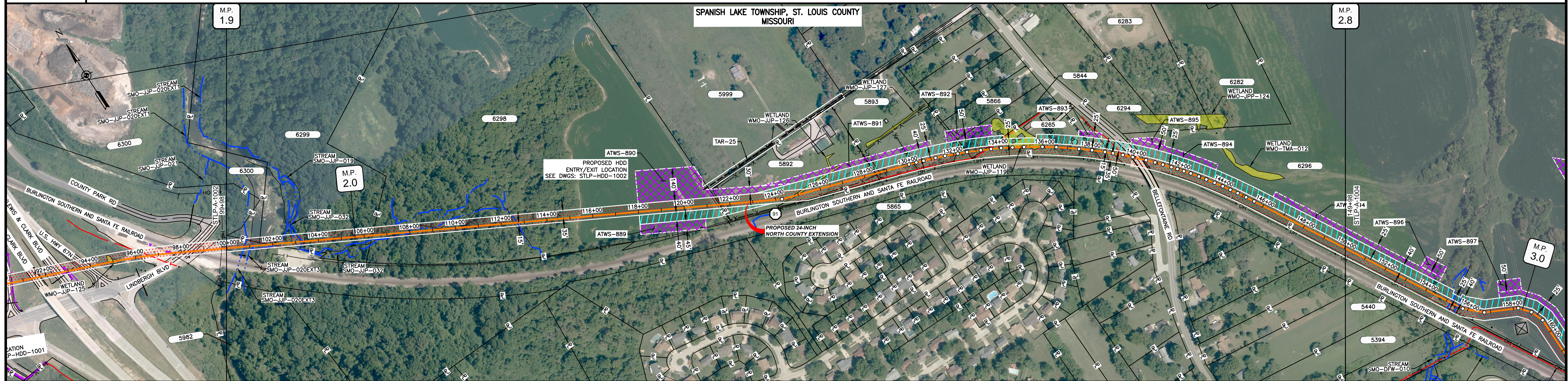


- NOTES:
1. THE IMAGERY SHOWN WAS PROVIDED BY AERIAL DATA SERVICES, 2016. ADDITIONAL IMAGERY SUPPLEMENTED FROM USFWS-NWI AND USGS.
 2. EXISTING FEATURES SHOWN WERE SURVEYED BY MOTT MACDONALD AND DIGITIZED FROM IMAGERY. ALL LOCATIONS ARE APPROXIMATE AND SHALL BE VERIFIED BY CONTRACTOR.
 3. PROPERTY LINES DEPICTED ON THIS PLAN ARE BASED ON GIS TAX MAP DATA.
 4. ROAD CENTERLINES SHOWN ARE FROM PUBLICLY AVAILABLE DATA AND HAVE NOT BEEN SURVEYED.

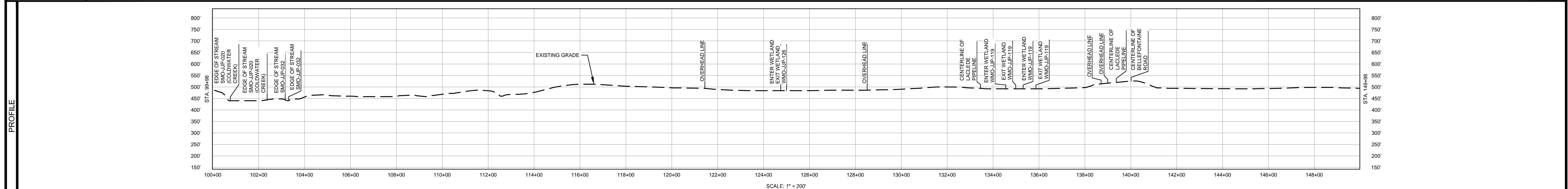


MATERIAL		REFERENCE DRAWINGS		REVISIONS					APPROVALS			SCALE PLAN: 1" = 200' SCALE PROFILE H: 1" = 200' SCALE PROFILE V: 1" = 200'	PREPARED FOR Spire STL Pipeline	SPIRE STL PIPELINE PROJECT																																																																															
TAG	QUANTITY	DESCRIPTION	DWG. NO.	TITLE	NO.	REVISIONS	DATE	DRAWN	CK	APPR	DRAWN BY			DATE	CLIENT APPROVAL	DATE	SCALE	DRAWING NO.	REVISION																																																																										
3	3433'	PIPE, 24.000" OD X 0.500" WT, API-5L, X70, DSAW, FBE COATED	STLP-HDD-1001	HDD PROFILE OVERVIEW	2	AMENDMENT TO FERC	04/2017	KAM	WH	DGG	DGG	07/2017			1" = 200'	STLP-A-1002	4																																																																												
4	1567'	PIPE, 24.000" OD X 0.500" WT, API-5L, X70, DSAW, FBE/ARO COATED			3	FERC SUPPLEMENTAL FILING	07/2017	KAM	RJP	DGG																																																																																			
20	2	INDUCTION BEND, 24.000" OD X 0.500" WT, 5D, X70, FBE COATED			4	FERC SUPPLEMENTAL FILING	10/2017	DP	RJP	DGG																																																																																			
<table border="1"> <thead> <tr> <th colspan="3">REVISIONS</th> <th colspan="3">APPROVALS</th> </tr> <tr> <th>NO.</th> <th>REVISIONS</th> <th>DATE</th> <th>DRAWN</th> <th>CK</th> <th>APPR</th> </tr> </thead> <tbody> <tr> <td>2</td> <td>AMENDMENT TO FERC</td> <td>04/2017</td> <td>KAM</td> <td>WH</td> <td>DGG</td> </tr> <tr> <td>3</td> <td>FERC SUPPLEMENTAL FILING</td> <td>07/2017</td> <td>KAM</td> <td>RJP</td> <td>DGG</td> </tr> <tr> <td>4</td> <td>FERC SUPPLEMENTAL FILING</td> <td>10/2017</td> <td>DP</td> <td>RJP</td> <td>DGG</td> </tr> </tbody> </table>												REVISIONS			APPROVALS			NO.	REVISIONS	DATE	DRAWN	CK	APPR	2	AMENDMENT TO FERC	04/2017	KAM	WH	DGG	3	FERC SUPPLEMENTAL FILING	07/2017	KAM	RJP	DGG	4	FERC SUPPLEMENTAL FILING	10/2017	DP	RJP	DGG	<table border="1"> <thead> <tr> <th colspan="2">APPROVALS</th> </tr> <tr> <th>DRAWN BY</th> <th>DATE</th> </tr> </thead> <tbody> <tr> <td>DGG</td> <td>07/2017</td> </tr> <tr> <td>ENG. APPROVAL</td> <td>DATE</td> </tr> <tr> <td>DGG</td> <td>07/2017</td> </tr> <tr> <td>P.M. APPROVAL</td> <td>DATE</td> </tr> <tr> <td>JEW</td> <td>07/2017</td> </tr> </tbody> </table>			APPROVALS		DRAWN BY	DATE	DGG	07/2017	ENG. APPROVAL	DATE	DGG	07/2017	P.M. APPROVAL	DATE	JEW	07/2017	<table border="1"> <thead> <tr> <th colspan="2">PREPARED FOR</th> </tr> <tr> <td colspan="2">Spire STL Pipeline</td> </tr> </thead> <tbody> <tr> <td colspan="2">PREPARED BY</td> </tr> <tr> <td colspan="2">M MOTT MACDONALD</td> </tr> </tbody> </table>			PREPARED FOR		Spire STL Pipeline		PREPARED BY		M MOTT MACDONALD		<table border="1"> <thead> <tr> <th colspan="3">SPIRE STL PIPELINE PROJECT</th> </tr> <tr> <td colspan="3">ALIGNMENT SHEET</td> </tr> <tr> <td colspan="3">PROPOSED 24-INCH NORTH COUNTY EXTENSION</td> </tr> <tr> <td colspan="3">ST. LOUIS COUNTY, MISSOURI</td> </tr> <tr> <td colspan="3">STA. 5000 TO STA. 9998</td> </tr> <tr> <th>SCALE</th> <th>DRAWING NO.</th> <th>REVISION</th> </tr> <tr> <td>1" = 200'</td> <td>STLP-A-1002</td> <td>4</td> </tr> </thead></table>			SPIRE STL PIPELINE PROJECT			ALIGNMENT SHEET			PROPOSED 24-INCH NORTH COUNTY EXTENSION			ST. LOUIS COUNTY, MISSOURI			STA. 5000 TO STA. 9998			SCALE	DRAWING NO.	REVISION	1" = 200'	STLP-A-1002	4
REVISIONS			APPROVALS																																																																																										
NO.	REVISIONS	DATE	DRAWN	CK	APPR																																																																																								
2	AMENDMENT TO FERC	04/2017	KAM	WH	DGG																																																																																								
3	FERC SUPPLEMENTAL FILING	07/2017	KAM	RJP	DGG																																																																																								
4	FERC SUPPLEMENTAL FILING	10/2017	DP	RJP	DGG																																																																																								
APPROVALS																																																																																													
DRAWN BY	DATE																																																																																												
DGG	07/2017																																																																																												
ENG. APPROVAL	DATE																																																																																												
DGG	07/2017																																																																																												
P.M. APPROVAL	DATE																																																																																												
JEW	07/2017																																																																																												
PREPARED FOR																																																																																													
Spire STL Pipeline																																																																																													
PREPARED BY																																																																																													
M MOTT MACDONALD																																																																																													
SPIRE STL PIPELINE PROJECT																																																																																													
ALIGNMENT SHEET																																																																																													
PROPOSED 24-INCH NORTH COUNTY EXTENSION																																																																																													
ST. LOUIS COUNTY, MISSOURI																																																																																													
STA. 5000 TO STA. 9998																																																																																													
SCALE	DRAWING NO.	REVISION																																																																																											
1" = 200'	STLP-A-1002	4																																																																																											

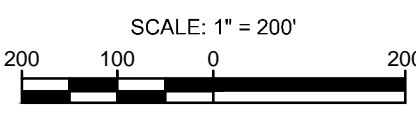
OWNERSHIP / FOOTAGE	US HWY 67	8292	6298	8892	8893	8841	8285	BELLEFONTAINE ROAD	6298				
	190'	448'	1519'	696'	409'	74'	485'	217'	962'				
STATIONING	100+00	104+00	108+00	112+00	116+00	120+00	124+00	128+00	132+00	136+00	140+00	144+00	148+00



MATERIAL & COATING	119+31		119+31		130+00		139+61		140+41										
DESIGN FACTOR	0.5																		
CONSTRUCTION METHOD	HDD				OPEN CUT				BORE										
PIPELINE COVER	5' MIN																		
SOILS	60005				60003		66024				60001								
LAND USE	F	OW	F	OW	F	AG	D	F	D	W	D	F	D	F	D	F	D	OL	AG



- NOTES:**
1. THE IMAGERY SHOWN WAS PROVIDED BY AERIAL DATA SERVICES, 2016. ADDITIONAL IMAGERY SUPPLEMENTED FROM USFWS-NWI AND USGS.
 2. EXISTING FEATURES SHOWN WERE SURVEYED BY MOTT MACDONALD AND DIGITIZED FROM IMAGERY. ALL LOCATIONS ARE APPROXIMATE AND SHALL BE VERIFIED BY CONTRACTOR.
 3. PROPERTY LINES DEPICTED ON THIS PLAN ARE BASED ON GIS TAX MAP DATA.
 4. ROAD CENTERLINES SHOWN ARE FROM PUBLICLY AVAILABLE DATA AND HAVE NOT BEEN SURVEYED.



TAG	QUANTITY	DESCRIPTION	REFERENCE DRAWINGS
3	2987'	PIPE, 24.000" OD X 0.500" WT, API-5L, X70, DSAW, FBE COATED	STPL-HDD-1002
4	2013'	PIPE, 24.000" OD X 0.500" WT, API-5L, X70, DSAW, FBE/ARO COATED	HDD PROFILE OVERVIEW

REVISIONS				APPROVALS			
NO.	REVISIONS	DATE	DRAWN	CK	APPR	DRAWN BY	DATE
2	AMENDMENT TO FERC	04/2017	KAM	WH	DGG	DP	07/2017
3	FERC SUPPLEMENTAL FILING	07/2017	KAM	RJP	DGG	CHECKED BY	DATE
4	FERC SUPPLEMENTAL FILING	10/2017	DP	RJP	DGG	ENG. APPROVAL	DATE
						DGG	07/2017
						P.M. APPROVAL	DATE
						JEW	07/2017

CLIENT APPROVAL	DATE

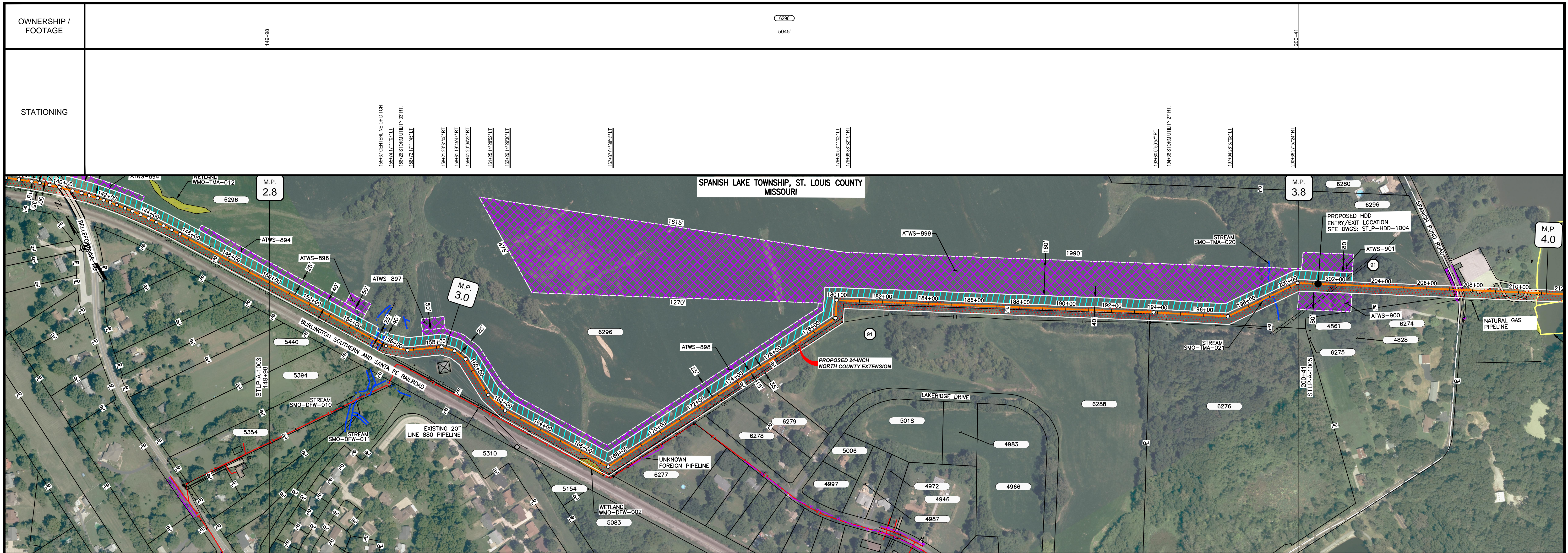
PREPARED FOR
Spire STL Pipeline

PREPARED BY
M M MOTT MACDONALD

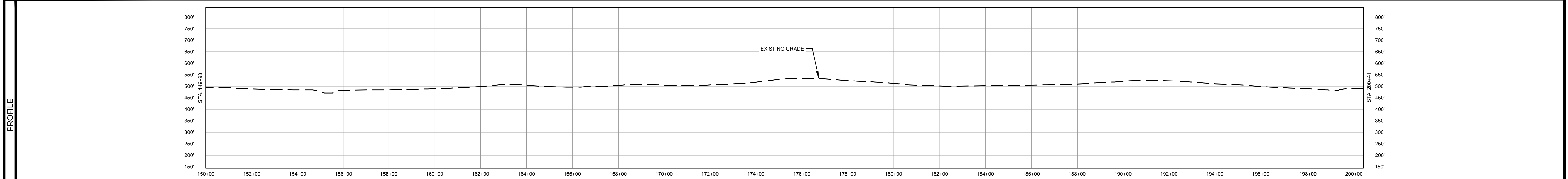
SPIRE STL PIPELINE PROJECT

ALIGNMENT SHEET
PROPOSED 24-INCH NORTH COUNTY EXTENSION
ST. LOUIS COUNTY, MISSOURI
STA. 9998 TO STA. 14998

SCALE: 1" = 200'
DRAWING NO.: STPL-A-1003
REVISION: 4



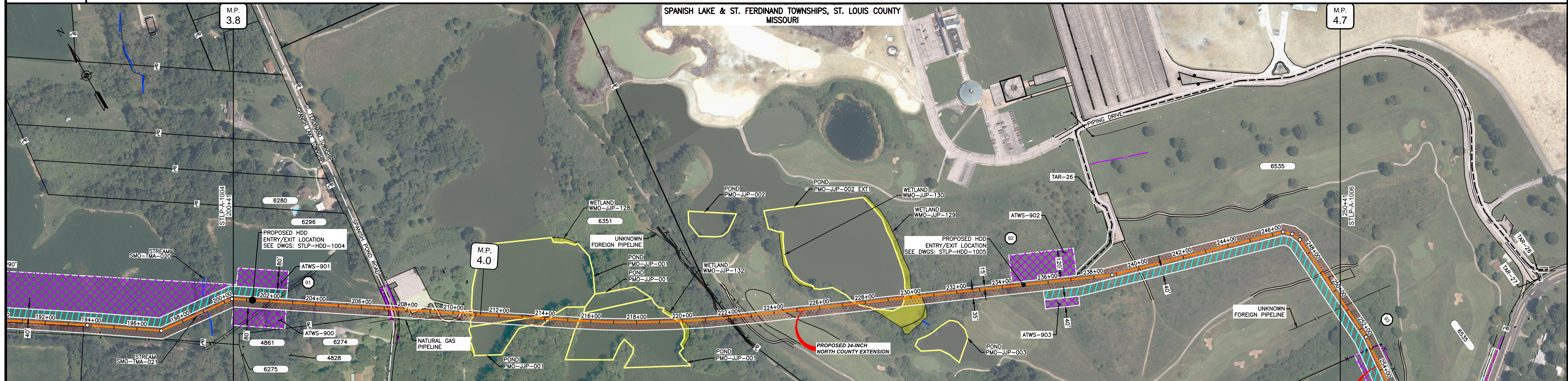
CLASS LOCATION/MAOP	CLASS III / 1440 PSIG				CLASS II / 1440 PSIG							
	149+98				167+57				200+41			
MATERIAL & COATING	5045' (3)											
DESIGN FACTOR	0.5				0.6							
CONSTRUCTION METHOD	OPEN CUT											
PIPELINE COVER	5' MIN											
SOILS	60001	66024	60003	60025	60003	66024	60003	60001	66024			
LAND USE	AG	F	AG	D	AG	F	AG	F	AG	F	W	AG



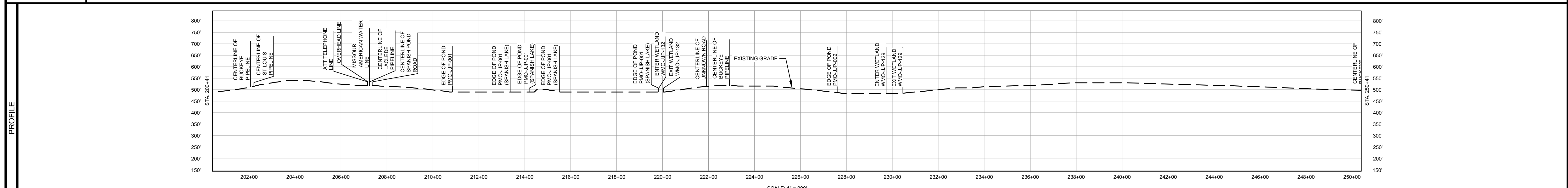
- NOTES:
1. THE IMAGERY SHOWN WAS PROVIDED BY AERIAL DATA SERVICES, 2016. ADDITIONAL IMAGERY SUPPLEMENTED FROM USFWS-NWI AND USGS.
 2. EXISTING FEATURES SHOWN WERE SURVEYED BY MOTT MACDONALD AND DIGITIZED FROM IMAGERY. ALL LOCATIONS ARE APPROXIMATE AND SHALL BE VERIFIED BY CONTRACTOR.
 3. PROPERTY LINES DEPICTED ON THIS PLAN ARE BASED ON GIS TAX MAP DATA.
 4. ROAD CENTERLINES SHOWN ARE FROM PUBLICLY AVAILABLE DATA AND HAVE NOT BEEN SURVEYED.

MATERIAL			REFERENCE DRAWINGS		REVISIONS							APPROVALS			PREPARED FOR		
TAG	QUANTITY	DESCRIPTION	DWG. NO.	TITLE	NO.	REVISIONS	DATE	DRAWN	CK	APPR	DRAWN BY	DATE	SCALE PLAN:				
3	5045'	PIPE, 24.000" OD X 0.500" WT, API-5L, X70, DSAW, FBE COATED	STPL-HDD-1003	HDD PROFILE OVERVIEW	2	AMENDMENT TO FERC	04/2017	KAM	WH	DGG	DP	07/2017	SCALE PROFILE H: 1" = 200'				
20	4	INDUCTION BEND, 24.000" OD X 0.500" WT, 5D, X70, FBE COATED			3	FERC SUPPLEMENTAL FILING	07/2017	KAM	RJP	DGG	CHECKED BY	DATE	SCALE PROFILE V: 1" = 200'				
					4	FERC SUPPLEMENTAL FILING	10/2017	DP	RJP	DGG	RJP	07/2017	CLIENT APPROVAL				
											ENG. APPROVAL	DATE	DATE				
											DGG	07/2017	DATE				
											P.M. APPROVAL	DATE	DATE	SCALE	DRAWING NO.	REVISION	
											JEW	07/2017	1" = 200'	STLP-A-1004	4		

OWNERSHIP / FOOTAGE	200+41	6296 673	207+14	SPANISH POND ROAD 4'	207+48	6351 1446	222+04	8535 2837	250+41	
STATIONING	200+05 CENTERLINE OF BUCKEYE PIPELINE 200+21 CENTERLINE OF ST LOUIS PIPELINE 207+14 PROPERTY LINE 207+15 ATT TELEPHONE LINE 207+17 OVERHEAD LINE 207+24 MISSOURI AMERICAN WATER LINE 207+26 CENTERLINE OF LACEDGE PIPELINE 207+28 EDGE OF PAVEMENT 207+32 WATER UTILITY 36 RT. 207+39 CENTERLINE OF SPANISH POND ROAD 207+51 EDGE OF PAVEMENT 207+58 PROPERTY LINE 207+67 EDGE OF PAVEMENT 208+10 EDGE OF PAVEMENT 208+13 EDGE OF PAVEMENT 208+14 EDGE OF PAVEMENT 209+25 EDGE OF PAVEMENT 209+28 EDGE OF PAVEMENT 209+38 EDGE OF PAVEMENT 210+25 EDGE OF PAVEMENT 210+47 EDGE OF PAVEMENT 210+83 EDGE OF POND PMO-JUP-001 210+83 EDGE OF PAVEMENT 213+37 EDGE OF POND PMO-JUP-001 (SPANISH LAKE) 214+19 EDGE OF POND PMO-JUP-001 (SPANISH LAKE) 215+50 EDGE OF POND PMO-JUP-001 (SPANISH LAKE) 219+83 EDGE OF POND PMO-JUP-001 (SPANISH LAKE) 219+83 ENTER WETLAND WMO-JUP-132 220+03 EXIT WETLAND WMO-JUP-132 221+00 CENTERLINE OF UNKNOWN ROAD 222+04 PROPERTY LINE 222+13 EXISTING FENCE 222+51 EDGE OF PAVEMENT 222+60 EDGE OF PAVEMENT 222+91 CENTERLINE OF BUCKEYE PIPELINE 227+02 EDGE OF POND PMO-JUP-002 229+72 EDGE OF POND PMO-JUP-002 229+72 ENTER WETLAND WMO-JUP-129 230+48 EXIT WETLAND WMO-JUP-129 246+48 26" 1251" BT 246+48 21" 1315" BT 247+30 12" 1315" BT 249+04 EDGE OF PAVEMENT 249+12 EDGE OF PAVEMENT									



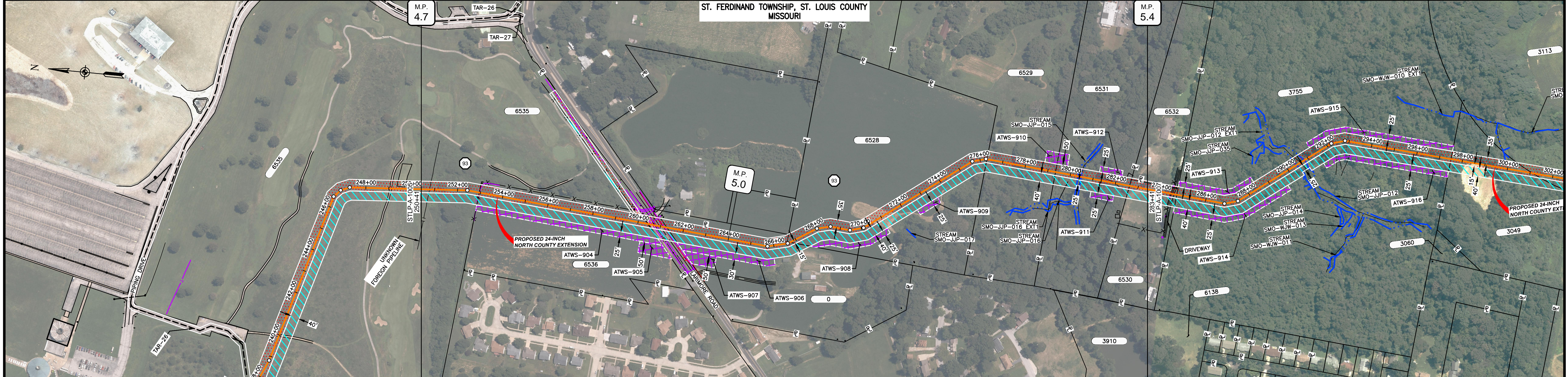
CLASS LOCATION/MAOP	CLASS II / 1440 PSIG					CLASS III / 1440 PSIG																		
MATERIAL & COATING	3					3																		
DESIGN FACTOR	0.6					0.5																		
CONSTRUCTION METHOD	OPEN CUT					HDD					OPEN CUT													
PIPELINE COVER	5' MIN																							
SOILS	66024	60004	60001	60004	99001	60004	99001	60176	99001	60176	60025	60001												
LAND USE	AG	F	AG	OL	D	OL	D	OL	D	OL	D	OW	F	OW	W	F	OL	F	OW	W	F	OL	D	OL



- NOTES:
1. THE IMAGERY SHOWN WAS PROVIDED BY AERIAL DATA SERVICES, 2016. ADDITIONAL IMAGERY SUPPLEMENTED FROM USFWS-NWI AND USGS.
 2. EXISTING FEATURES SHOWN WERE SURVEYED BY MOTT MACDONALD AND DIGITIZED FROM IMAGERY. ALL LOCATIONS ARE APPROXIMATE AND SHALL BE VERIFIED BY CONTRACTOR.
 3. PROPERTY LINES DEPICTED ON THIS PLAN ARE BASED ON GIS TAX MAP DATA.
 4. ROAD CENTERLINES SHOWN ARE FROM PUBLICLY AVAILABLE DATA AND HAVE NOT BEEN SURVEYED.

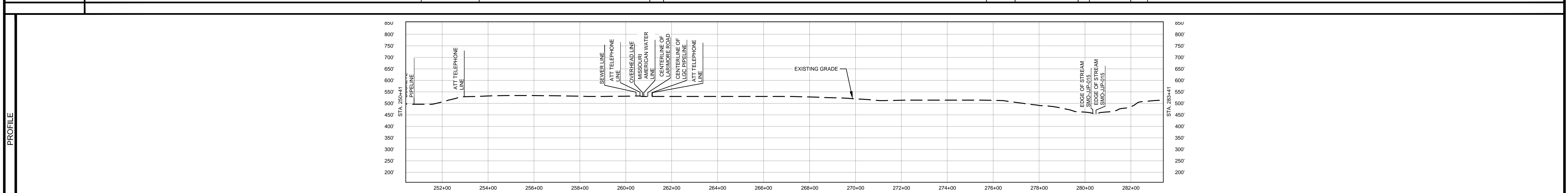
MATERIAL			REFERENCE DRAWINGS			REVISIONS				APPROVALS			PREPARED FOR		SPIRE STL PIPELINE PROJECT			
TAG	QUANTITY	DESCRIPTION	DWG. NO.	TITLE	NO.	REVISIONS	DATE	DRAWN	CK	APPR	DRAWN BY	DATE	SCALE PLAN: 1" = 200'	Spire STL Pipeline PREPARED BY: M M MOTT MACDONALD		ALIGNMENT SHEET PROPOSED 24-INCH NORTH COUNTY EXTENSION ST. LOUIS COUNTY, MISSOURI STA. 20041 TO STA. 25041		
3	1633'	PIPE, 24.000" OD X 0.500" WT, API-5L, X70, DSAW, FBE COATED	STLP-HDD-1004	HDD PROFILE OVERVIEW	2	AMENDMENT TO FERC	04/2017	KAM	WH	DGG	DP	07/2017	SCALE PROFILE H: 1" = 200'					
4	3367'	PIPE, 24.000" OD X 0.500" WT, API-5L, X70, DSAW, FBE/ARO COATED	STLP-HDD-1005	HDD PROFILE OVERVIEW	3	FERC SUPPLEMENTAL FILING	07/2017	KAM	RJP	DGG	CHECKED BY	DATE	SCALE PROFILE V: 1" = 200'					
					4	FERC SUPPLEMENTAL FILING	10/2017	DP	RJP	DGG	ENG. APPROVAL	DATE	CLIENT APPROVAL					
											DGG	07/2017	DATE					
											P.M. APPROVAL	DATE	DATE					
											JEV	07/2017	DATE					
												SCALE: 1" = 200'		DRAWING NO. STLP-A-1005				
														REVISION: 4				

OWNERSHIP / FOOTAGE		250+41	8535	254'	250+95	8536	747'	260+42	LARIMORE ROAD	85	261+27	0	545'	269+71	8529	958'	276+29	8529	305'	279+34	8531	328'	282+52	8530	79'	283+41
STATIONING		250+41	254'	250+95	747'	260+42	85	261+27	545'	269+71	8529	958'	276+29	8529	305'	279+34	8531	328'	282+52	8530	79'	283+41				
		250+41	254'	250+95	747'	260+42	85	261+27	545'	269+71	8529	958'	276+29	8529	305'	279+34	8531	328'	282+52	8530	79'	283+41				
		250+41	254'	250+95	747'	260+42	85	261+27	545'	269+71	8529	958'	276+29	8529	305'	279+34	8531	328'	282+52	8530	79'	283+41				



CLASS LOCATION/MAOP CLASS III / 1440 PSIG

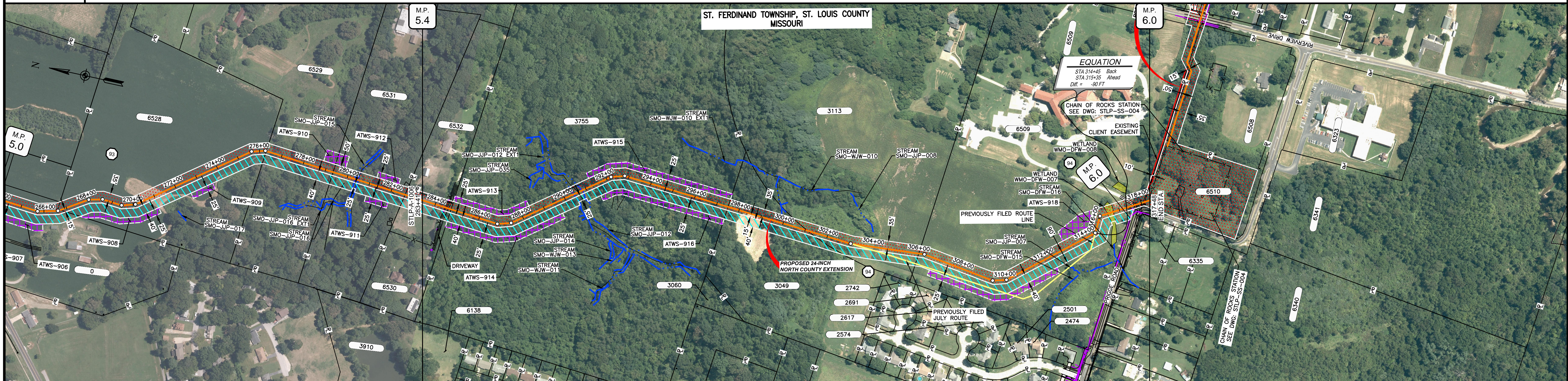
MATERIAL & COATING	250+41	250+41	250+41	250+41	250+41	250+41	250+41	250+41	250+41	250+41	250+41	250+41	250+41	250+41	250+41	250+41	250+41	250+41	250+41	250+41	250+41	250+41	250+41	250+41	250+41	250+41	250+41	250+41	
DESIGN FACTOR																													
CONSTRUCTION METHOD																													
PIPELINE COVER																													
SOILS																													
LAND USE																													



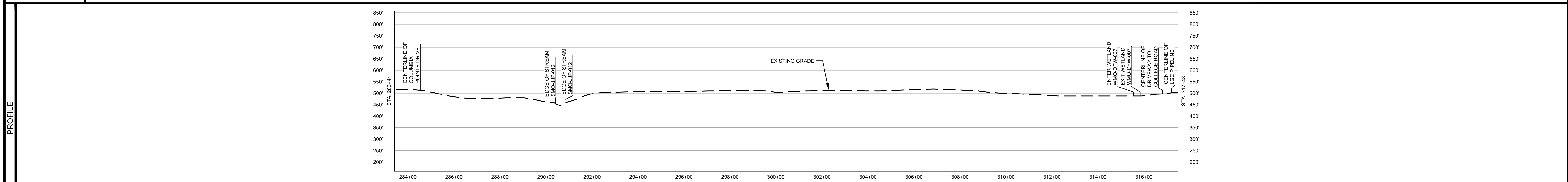
- NOTES:
- 1. THE IMAGERY SHOWN WAS PROVIDED BY AERIAL DATA SERVICES, 2016. ADDITIONAL IMAGERY SUPPLEMENTED FROM USFWS-NWI AND USGS.
 - 2. EXISTING FEATURES SHOWN WERE SURVEYED BY MOTT MACDONALD AND DIGITIZED FROM IMAGERY. ALL LOCATIONS ARE APPROXIMATE AND SHALL BE VERIFIED BY CONTRACTOR.
 - 3. PROPERTY LINES DEPICTED ON THIS PLAN ARE BASED ON GIS TAX MAP DATA.
 - 4. ROAD CENTERLINES SHOWN ARE FROM PUBLICLY AVAILABLE DATA AND HAVE NOT BEEN SURVEYED.

MATERIAL		REFERENCE DRAWINGS		REVISIONS				APPROVALS				SCALE PLAN:	PREPARED FOR:	SPIRE STL PIPELINE PROJECT				
TAG	QUANTITY	DESCRIPTION	DWG. NO.	TITLE	NO.	REVISIONS	DATE	DRAWN	CK	APPR	DRAWN BY	DATE	SCALE PLAN:	PREPARED FOR:	SPIRE STL PIPELINE PROJECT			
3	3221'	PIPE, 24.000" OD X 0.500" WT, API-5L, X70, DSAW, FBE COATED			2	AMENDMENT TO FERD	04/2017	KAM	WH	DGG	DP	07/2017	SCALE PROFILE H: 1" = 200'		ALignment SHEET PROPOSED 24-INCH NORTH COUNTY EXTENSION ST. LOUIS COUNTY, MISSOURI STA. 25041 TO STA. 28341			
4	80'	PIPE, 24.000" OD X 0.500" WT, API-5L, X70, DSAW, FBE/ARO COATED			3	FERC SUPPLEMENTAL FILING	07/2017	KAM	RJP	DGG	CHECKED BY	DATE	SCALE PROFILE V: 1" = 200'					
					4	FERC SUPPLEMENTAL FILING	10/2017	DP	RJP	DGG	ENG. APPROVAL	DATE	CLIENT APPROVAL					
											DGG	07/2017	DATE					
											P.M. APPROVAL	DATE		PREPARED BY:		SCALE: 1" = 200' DRAWING NO.: STLPA-1006 REVISION: 4		
											JEV	07/2017	DATE					

OWNERSHIP / FOOTAGE	283+41	130'	6530	3755	1278'	297+49	361'	304+10	3113	495'	6509	1075'	316+80	18'	316+98	6509	27'	317+25	22'	317+48	
STATIONING	<p>284+45 EXISTING FENCE 284+45 EDGE OF PAVEMENT 284+45 CENTERLINE OF COLUMBIA PONTE DRIVE 284+45 EDGE OF PAVEMENT 284+71 PROPERTY LINE 286+45 2' X 2' SILL 287+42 2' X 2' SILL</p> <p>290+45 EDGE OF STREAM SMO-JUP-012 290+45 CENTERLINE OF DITCH 290+45 EDGE OF STREAM SMO-JUP-012 292+45 2' X 2' SILL 292+45 2' X 2' SILL</p> <p>297+49 PROPERTY LINE 301+10 PROPERTY LINE 304+07 2' X 2' SILL</p> <p>306+85 PROPERTY LINE 306+30 12' X 14' RT</p> <p>309+05 309+48 2' X 2' SILL 310+08 2' X 2' SILL 314+45 5' X 2' SILL 314+45 5' X 2' SILL 314+45 5' X 2' SILL 315+45 ENTER WETLAND WMO-DFW-007 315+43 EXIT WETLAND WMO-DFW-007 316+70 TELEPHONE UTILITY 18 FT. 316+70 TELEPHONE UTILITY 18 FT. 316+70 TELEPHONE UTILITY 18 FT. 316+80 CENTERLINE OF PAVEMENT 316+80 PROPERTY LINE 316+80 EDGE OF PAVEMENT 316+80 PROPERTY LINE 317+18 PROPERTY LINE 317+18 CENTERLINE OF LCC PIPELINE 317+48 PROPERTY LINE</p>																				



CLASS LOCATION/MAOP	CLASS III / 1440 PSIG																				
MATERIAL & COATING	<p>283+41</p> <p>314+45</p> <p>315+45</p> <p>316+40</p> <p>317+20</p> <p>317+48</p>																				
DESIGN FACTOR	0.5																				
CONSTRUCTION METHOD	OPEN CUT																				
PIPELINE COVER	5' MIN																				
SOILS	60003 60005 60165 60003 60165																				
LAND USE	AG F D F OW F OL F OL F OL AG AG W AG OL D F																				



- NOTES:
1. THE IMAGERY SHOWN WAS PROVIDED BY AERIAL DATA SERVICES, 2016. ADDITIONAL IMAGERY SUPPLEMENTED FROM USFWS-NWI AND USGS.
 2. EXISTING FEATURES SHOWN WERE SURVEYED BY MOTT MACDONALD AND DIGITIZED FROM IMAGERY. ALL LOCATIONS ARE APPROXIMATE AND SHALL BE VERIFIED BY CONTRACTOR.
 3. PROPERTY LINES DEPICTED ON THIS PLAN ARE BASED ON GIS TAX MAP DATA.
 4. ROAD CENTERLINES SHOWN ARE FROM PUBLICLY AVAILABLE DATA AND HAVE NOT BEEN SURVEYED.

MATERIAL			REFERENCE DRAWINGS		REVISIONS				APPROVALS			PREPARED FOR		SPIRE STL PIPELINE PROJECT			
TAG	QUANTITY	DESCRIPTION	DWG. NO.	TITLE	NO.	REVISIONS	DATE	DRAWN	CK	APPR	DRAWN BY	DATE	SCALE PLAN:	SCALE PROFILE H:		SCALE PROFILE V:	
3	3327'	PIPE, 24.000" OD X 0.500" WT, API-5L, X70, DSAW, FBE COATED	STLP-SS-004	ENABLE MRT CHAIN OF ROCKS STATION SITE PLAN	3	AMENDMENT TO FERC	04/2017	KAM	WH	DGG	DP	07/2017	1" = 200'	1" = 200'		1" = 200'	
4	80'	PIPE, 24.000" OD X 0.500" WT, API-5L, X70, DSAW, FBE/ARO COATED	STL-M-200-0300	CHAIN OF ROCKS STATION SITE PLAN	4	FERC SUPPLEMENTAL FILING	07/2017	KAM	RJP	DGG	CHECKED BY	DATE					
20	2	INDUCTION BEND, 24.000" OD X 0.500" WT, 5D, X70, FBE COATED	STL-M-200-0301	CHAIN OF ROCKS STATION (WEST) ENLARGED PLAN "A"		FERC SUPPLEMENTAL FILING	10/2017	DP	RJP	DGG	ENG. APPROVAL	DATE					
			STL-M-200-0302	CHAIN OF ROCKS CONNECTOR ENLARGED PLANS "B" & "C"							DGG	07/2017					
			STL-M-200-0303	ENABLE MRT CHAIN OF ROCKS STATION (EAST) ENLARGED PLAN "D"							P.M. APPROVAL	DATE					
											JEW	07/2017					

Spire STL Pipeline

MOTT MACDONALD

PREPARED BY: **M M**

CLIENT APPROVAL: _____ DATE: _____

SCALE: 1" = 200' DRAWING NO.: STLP-A-1007 REVISION: 4