













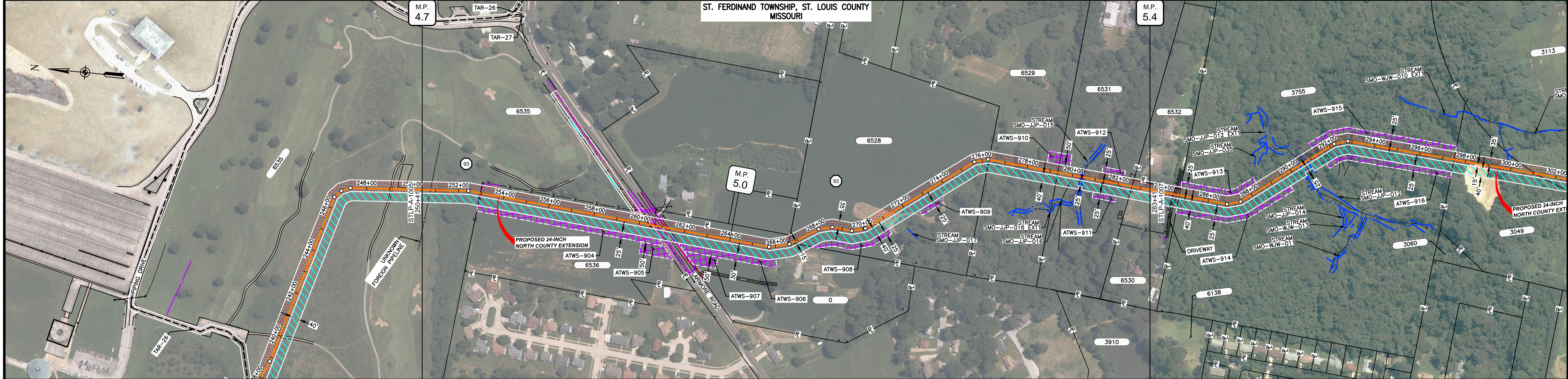




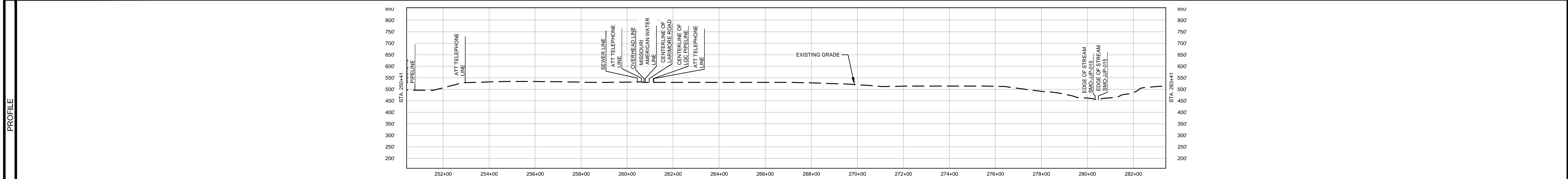




OWNERSHIP / FOOTAGE		250+41	254	259+95	747	260+42	85	261+27	545	266+71	958	276+29	305	279+34	328	282+52	79	283+41
STATIONING		250+41	254	259+95	747	260+42	85	261+27	545	266+71	958	276+29	305	279+34	328	282+52	79	283+41



CLASS LOCATION/MAOP		CLASS III / 1440 PSIG																
MATERIAL & COATING		250+41																283+41
DESIGN FACTOR		0.5																
CONSTRUCTION METHOD		OPEN CUT					BORE					OPEN CUT					OPEN CUT (FLUMED)	
PIPELINE COVER		5' MIN																
SOILS		60001	60165					60003	60005	60165	60005					60003		
LAND USE		OL	AG					D	AG					OL	F	DW	F	AG



- NOTES:
1. THE IMAGERY SHOWN WAS PROVIDED BY AERIAL DATA SERVICES, 2016. ADDITIONAL IMAGERY SUPPLEMENTED FROM USFWS-NWI AND USGS.
  2. EXISTING FEATURES SHOWN WERE SURVEYED BY MOTT MACDONALD AND DIGITIZED FROM IMAGERY. ALL LOCATIONS ARE APPROXIMATE AND SHALL BE VERIFIED BY CONTRACTOR.
  3. PROPERTY LINES DEPICTED ON THIS PLAN ARE BASED ON GIS TAX MAP DATA.
  4. ROAD CENTERLINES SHOWN ARE FROM PUBLICLY AVAILABLE DATA AND HAVE NOT BEEN SURVEYED.

MATERIAL		REFERENCE DRAWINGS		REVISIONS				APPROVALS		SCALE PLAN		PREPARED FOR		SPIRE STL PIPELINE PROJECT	
TAG	QUANTITY	DESCRIPTION	DWG. NO.	TITLE	NO.	REVISIONS	DATE	DRAWN	CK	APPR	DRAWN BY	DATE	SCALE PLAN	SCALE PROFILE H:	SCALE PROFILE V:
3	3221'	PIPE, 24.000" OD X 0.500" WT, API-5L, X70, DSAW, FBE COATED			2	AMENDMENT TO FERC	04/2017	KAM	WH	DGG	DP	07/2017	SCALE PROFILE H: 1" = 200'	SCALE PROFILE V: 1" = 200'	
4	80'	PIPE, 24.000" OD X 0.500" WT, API-5L, X70, DSAW, FBE/ARO COATED			3	FERC SUPPLEMENTAL FILING	07/2017	KAM	RJP	DGG	CHECKED BY	DATE			
					4	FERC SUPPLEMENTAL FILING	10/2017	DP	RJP	DGG	ENG. APPROVAL	DATE	CLIENT APPROVAL		
											DGG	07/2017	DATE		
											P.M. APPROVAL	DATE	DATE		
											JEV	07/2017			

Spire STL Pipeline

MOTT MACDONALD

SPIRE STL PIPELINE PROJECT

ALIGNMENT SHEET

PROPOSED 24-INCH NORTH COUNTY EXTENSION

ST. LOUIS COUNTY, MISSOURI

STA. 25041 TO STA. 28341

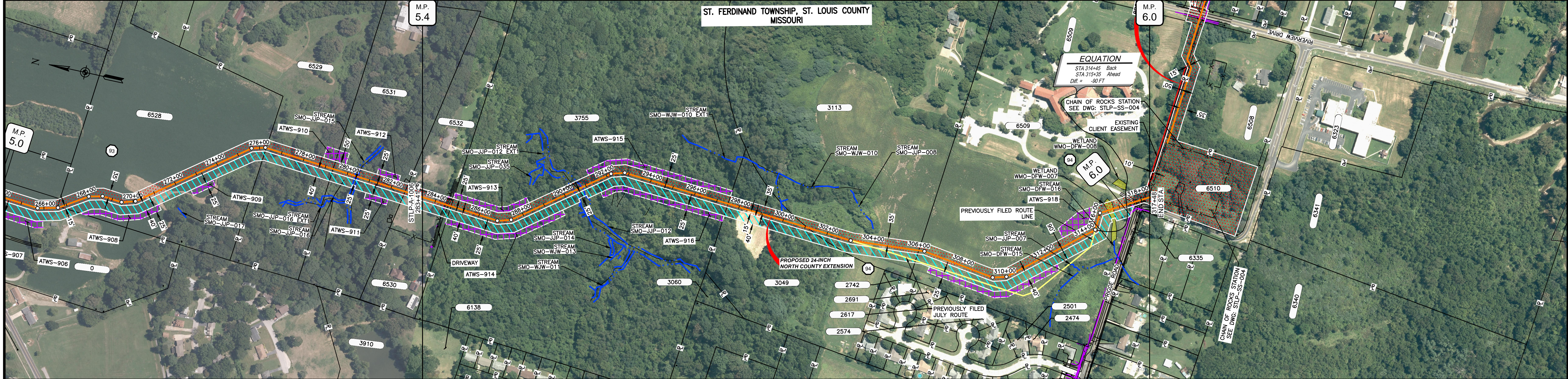
SCALE: 1" = 200'

DRAWING NO.: STL-P-A-1006

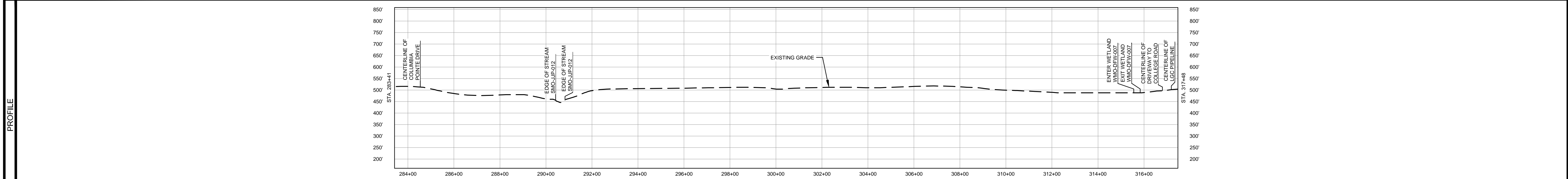
REVISION: 4



OWNERSHIP / FOOTAGE	283+41	130'	6530	3755	1278'	3049	3113	495'	6509	1075'	PRIGG ROAD	18'	6509	27'	6510	22'	317+48
STATIONING	283+41	284+45	284+45	284+45	284+45	284+45	284+45	284+45	284+45	284+45	284+45	284+45	284+45	284+45	284+45	284+45	284+45



CLASS LOCATION/MAOP	CLASS III / 1440 PSIG																
MATERIAL & COATING	314+45, 315+21, 316+40, 317+20, 317+48																
DESIGN FACTOR	0.5																
CONSTRUCTION METHOD	OPEN CUT (FLUMED)																
PIPELINE COVER	5' MIN																
SOILS	60003, 60005, 60165, 60003, 60165																
LAND USE	AG, F, D, F, OW, F, OL, F, OL, F, OL, AG, AG, W, AG, OL, D, F																



- NOTES:
1. THE IMAGERY SHOWN WAS PROVIDED BY AERIAL DATA SERVICES, 2016. ADDITIONAL IMAGERY SUPPLEMENTED FROM USFWS-NWI AND USGS.
  2. EXISTING FEATURES SHOWN WERE SURVEYED BY MOTT MACDONALD AND DIGITIZED FROM IMAGERY. ALL LOCATIONS ARE APPROXIMATE AND SHALL BE VERIFIED BY CONTRACTOR.
  3. PROPERTY LINES DEPICTED ON THIS PLAN ARE BASED ON GIS TAX MAP DATA.
  4. ROAD CENTERLINES SHOWN ARE FROM PUBLICLY AVAILABLE DATA AND HAVE NOT BEEN SURVEYED.

MATERIAL			REFERENCE DRAWINGS		REVISIONS				APPROVALS			PREPARED FOR		SPIRE STL PIPELINE PROJECT		
TAG	QUANTITY	DESCRIPTION	DWG. NO.	TITLE	NO.	REVISIONS	DATE	DRAWN	CK	APPR	DRAWN BY	DATE	SCALE PLAN:	SCALE PROFILE H:	SCALE PROFILE V:	
3	3327'	PIPE, 24.000" OD X 0.500" WT, API-5L, X70, DSAW, FBE COATED	STLP-SS-004	ENABLE MRT CHAIN OF ROCKS STATION SITE PLAN	3	AMENDMENT TO FERC	04/2017	KAM	WH	DGG	DP	07/2017	1" = 200'	1" = 200'	1" = 200'	
4	80'	PIPE, 24.000" OD X 0.500" WT, API-5L, X70, DSAW, FBE/ARO COATED	STL-M-200-0300	CHAIN OF ROCKS STATION SITE PLAN	4	FERC SUPPLEMENTAL FILING	07/2017	KAM	RJP	DGG	CHECKED BY	DATE				
20	2	INDUCTION BEND, 24.000" OD X 0.500" WT, 5D, X70, FBE COATED	STL-M-200-0301	CHAIN OF ROCKS STATION (WEST) ENLARGED PLAN "A"							RJP	07/2017				
			STL-M-200-0302	CHAIN OF ROCKS CONNECTOR ENLARGED PLANS "B" & "C"							ENG. APPROVAL	DATE				
			STL-M-200-0303	ENABLE MRT CHAIN OF ROCKS STATION (EAST) ENLARGED PLAN "D"							DGG	07/2017				
											P.M. APPROVAL	DATE				
											JEV	07/2017				

**M M**
  
 MOTT MACDONALD

CLIENT APPROVAL	DATE
DATE	
SCALE	DRAWING NO.
1" = 200'	STLP-A-1007
REVISION	
	4