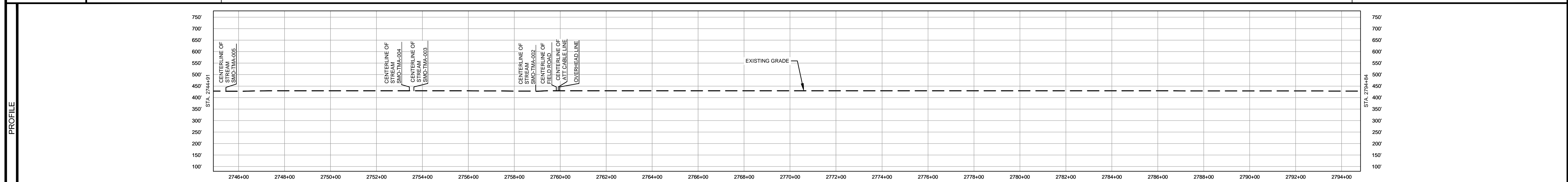


OWNERSHIP / FOOTAGE		7025 1483'	1029 3510'
STATIONING	2744+91	2759+74	2794+84



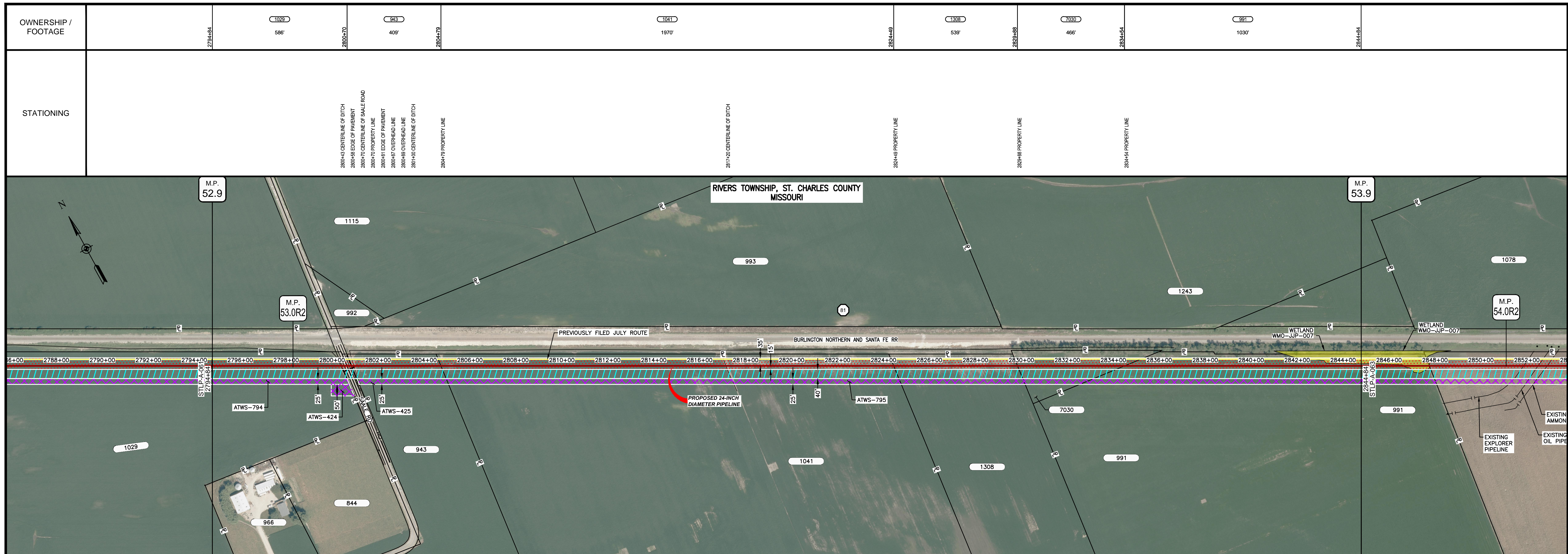
CLASS LOCATION/MAOP	CLASS I / 1440 PSIG									
MATERIAL & COATING	4993' (1)									
DESIGN FACTOR	0.72									
CONSTRUCTION METHOD	OPEN CUT	OPEN CUT (FLUMED)	OPEN CUT	OPEN CUT (FLUMED)	OPEN CUT	OPEN CUT (FLUMED)	OPEN CUT	OPEN CUT (FLUMED)	OPEN CUT	OPEN CUT
PIPELINE COVER	7' MIN.									
SOILS	66059	66019							66059	66110
LAND USE		AG	OL	AG	OL				AG	



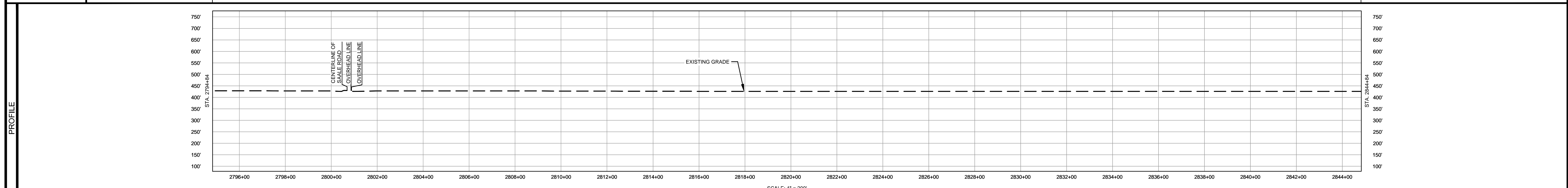
- NOTES:
1. THE IMAGERY SHOWN WAS PROVIDED BY AERIAL DATA SERVICES, 2016. ADDITIONAL IMAGERY SUPPLEMENTED FROM USFWS-NWI AND USGS.
  2. EXISTING FEATURES SHOWN WERE SURVEYED BY MOTT MACDONALD AND DIGITIZED FROM IMAGERY. ALL LOCATIONS ARE APPROXIMATE AND SHALL BE VERIFIED BY CONTRACTOR.
  3. PROPERTY LINES DEPICTED ON THIS PLAN ARE BASED ON GIS TAX MAP DATA.
  4. ROAD CENTERLINES SHOWN ARE FROM PUBLICLY AVAILABLE DATA AND HAVE NOT BEEN SURVEYED.

MATERIAL		REFERENCE DRAWINGS		REVISIONS				APPROVALS		SCALE PLAN: 1" = 200'		PREPARED FOR		SPIRE STL PIPELINE PROJECT		
TAG	QUANTITY	DESCRIPTION	DWG. NO.	TITLE	NO.	REVISIONS	DATE	DRAWN	CK	APPR	DRAWN BY	DATE	SCALE PROFILE H: 1" = 200'		ALIGNMENT SHEET	
1	4993'	PIPE, 24.000" OD X 0.375" WT, API-5L, X70, DSAW, FBE COATED			1	ISSUE FOR FERC	1/2017	GH	EB	DGG	DP	03/2017	SCALE PROFILE V: 1" = 200'		PROPOSED 24-INCH DIAMETER PIPELINE	
					2	AMENDMENT TO FERC	04/2017	DP	WH	DGG	CHECKED BY	DATE	CLIENT APPROVAL		ST. CHARLES COUNTY, MISSOURI	
					4	FERC SUPPLEMENTAL FILING	10/2017	DP	RJP	DGG	RJP	03/2017	PREPARED BY		STA. 2744+91 TO STA. 2794+84	
											ENG. APPROVAL	DATE	MOTT MACDONALD		SCALE	
											D.G.G.	04/2017			DRAWING NO.	
											P.M. APPROVAL	DATE			STLP-A-061	
											J.E.W.	04/2017			REVISION	
															4	

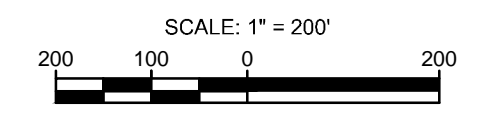




CLASS LOCATION/MAOP	CLASS 1 / 1440 PSIG	
MATERIAL & COATING		
DESIGN FACTOR	0.72	0.6
CONSTRUCTION METHOD	OPEN CUT	BORE
PIPELINE COVER	7' MIN.	
SOILS	66110	
LAND USE	AG	OL D OL



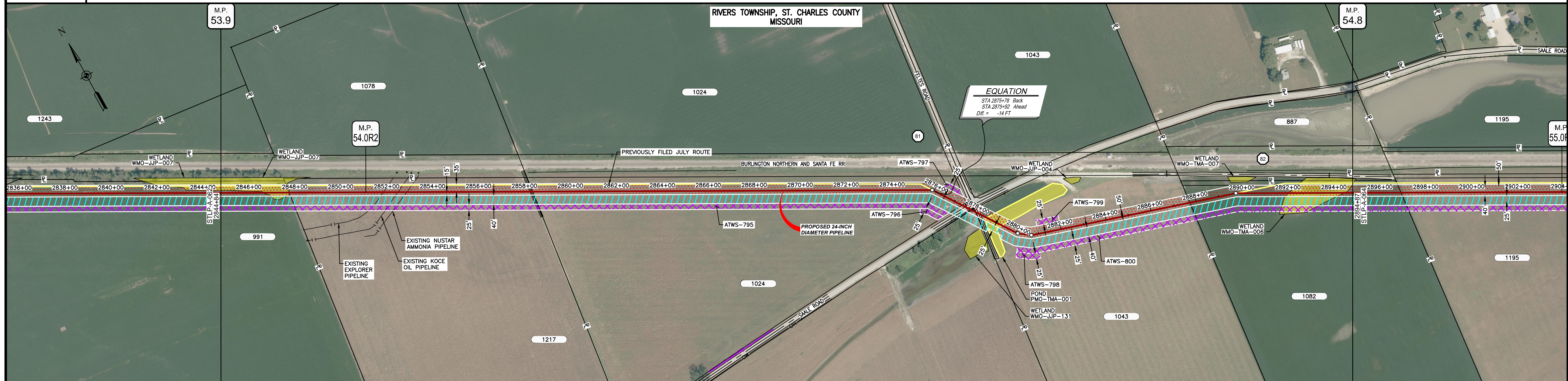
- NOTES:
1. THE IMAGERY SHOWN WAS PROVIDED BY AERIAL DATA SERVICES, 2016. ADDITIONAL IMAGERY SUPPLEMENTED FROM USFWS-NWI AND USGS.
  2. EXISTING FEATURES SHOWN WERE SURVEYED BY MOTT MACDONALD AND DIGITIZED FROM IMAGERY. ALL LOCATIONS ARE APPROXIMATE AND SHALL BE VERIFIED BY CONTRACTOR.
  3. PROPERTY LINES DEPICTED ON THIS PLAN ARE BASED ON GIS TAX MAP DATA.
  4. ROAD CENTERLINES SHOWN ARE FROM PUBLICLY AVAILABLE DATA AND HAVE NOT BEEN SURVEYED.



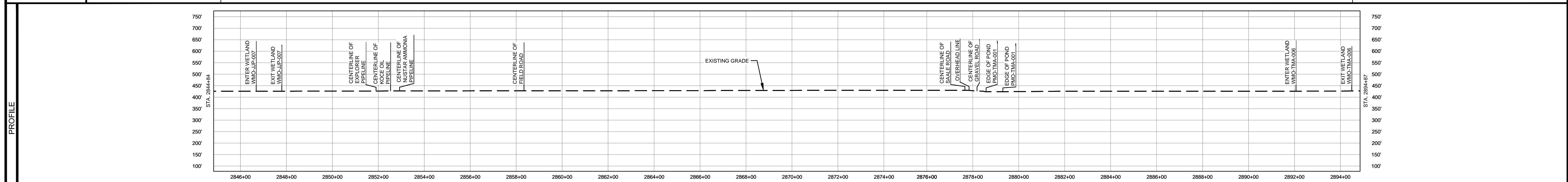
MATERIAL			REFERENCE DRAWINGS		REVISIONS				APPROVALS		PREPARED FOR		SPIRE STL PIPELINE PROJECT				
TAG	QUANTITY	DESCRIPTION	DWG. NO.	TITLE	NO.	REVISIONS	DATE	DRAWN	CK	APPR	DRAWN BY	DATE	SCALE PLAN: 1" = 200' SCALE PROFILE H: 1" = 200' SCALE PROFILE V: 1" = 200'		ALIGNMENT SHEET PROPOSED 24-INCH DIAMETER PIPELINE ST. CHARLES COUNTY, MISSOURI STA. 2794+84 TO STA. 2844+84		
1	4920'	PIPE, 24.000" OD X 0.375" WT, API-5L, X70, DSAW, FBE COATED			1	ISSUE FOR FERC	01/2017	GH	EB	DGG	DP	07/2017					
2	80'	PIPE, 24.000" OD X 0.500" WT, API-5L, X70, DSAW, FBE/ARO COATED			2	AMENDMENT TO FERC	04/2017	DP	WH	DGG	CHECKED BY	DATE	DATE	1" = 200'	STLP-A-062	4	
					3	FERC SUPPLEMENTAL FILING	07/2017	KAM	RJP	DGG	ENG. APPROVAL	DATE					
					4	FERC SUPPLEMENTAL FILING	10/2017	DP	RJP	DGG	P.M. APPROVAL	DATE					
											J.E.W.	07/2017					



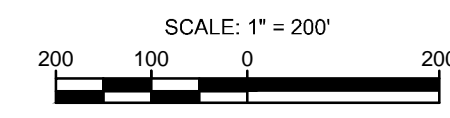
OWNERSHIP / FOOTAGE	2844+84	991 297	2847+81	1217 1060'	2858+41	1042 1951'	2874+05	1043 969'	2887+74	1082 713'	2894+87	
STATIONING	2846+10 CENTER WETLAND WMO-JUP-007 2841+51 EXIT WETLAND WMO-JUP-007 2841+51 PROPERTY LINE 2851+41 CENTERLINE OF EXPLORER PIPELINE 2852+54 CENTERLINE OF KOCE OIL PIPELINE 2852+54 CENTERLINE OF NUSTAR AMMONIA PIPELINE 2858+35 CENTERLINE OF FIELD ROAD 2858+41 PROPERTY LINE 2871+55 EDGE OF PAVEMENT 2871+45 CENTERLINE OF SALE ROAD 2871+55 OVERHEAD LINE 2871+55 PROPERTY LINE 2871+55 EDGE OF GRAVEL 2871+55 CENTERLINE OF GRAVEL ROAD 2871+55 EDGE OF GRAVEL 2871+55 EDGE OF POND POND-TMA-001 2871+55 EDGE OF POND POND-TMA-001 2880+15 15' SETBACK LT 2880+15 15' SETBACK RT 2887+74 PROPERTY LINE 2887+74 11' SETBACK RT 2884+08 ENTER WETLAND WMO-TMA-006 2884+51 EXIT WETLAND WMO-TMA-006											



CLASS LOCATION/MAOP	CLASS 1 / 1440 PSIG																																																					
MATERIAL & COATING	<table border="1"> <tr> <td>2844+84</td> <td colspan="10"></td> <td>2874+05</td> <td>2874+05</td> <td>2884+87</td> </tr> <tr> <td></td> <td colspan="10">3229'</td> <td>80'</td> <td>1681'</td> <td></td> </tr> <tr> <td></td> <td colspan="10">(1)</td> <td>(2)</td> <td>(1)</td> <td></td> </tr> </table>												2844+84											2874+05	2874+05	2884+87		3229'										80'	1681'			(1)										(2)	(1)	
2844+84											2874+05	2874+05	2884+87																																									
	3229'										80'	1681'																																										
	(1)										(2)	(1)																																										
DESIGN FACTOR	0.72																																																					
CONSTRUCTION METHOD	OPEN CUT																																																					
PIPELINE COVER	7' MIN.																																																					
SOILS	66110																																																					
LAND USE	AG W AG OL D AG OW AG W AG																																																					



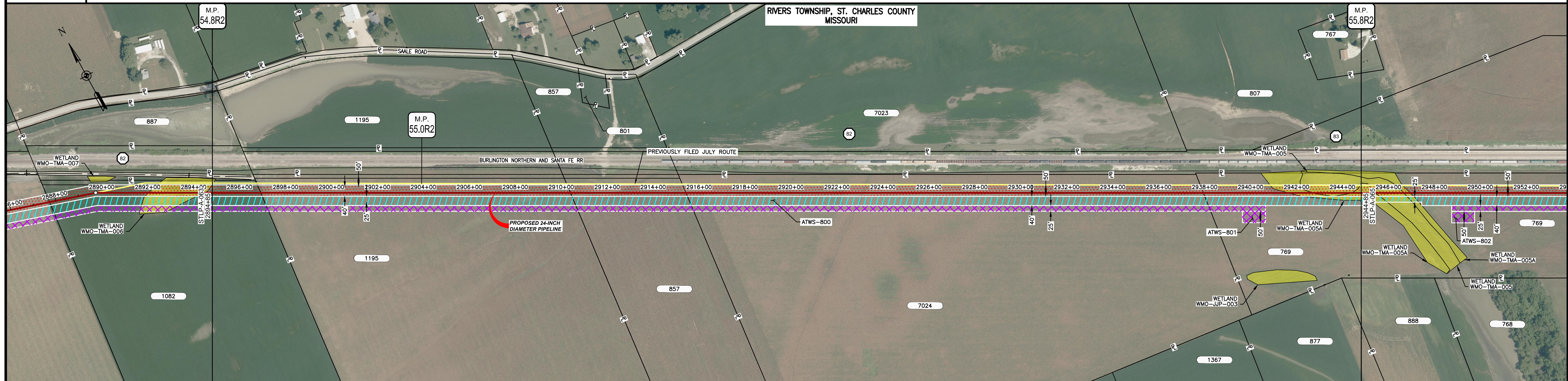
- NOTES:
1. THE IMAGERY SHOWN WAS PROVIDED BY AERIAL DATA SERVICES, 2016. ADDITIONAL IMAGERY SUPPLEMENTED FROM USFWS-NWI AND USGS.
  2. EXISTING FEATURES SHOWN WERE SURVEYED BY MOTT MACDONALD AND DIGITIZED FROM IMAGERY. ALL LOCATIONS ARE APPROXIMATE AND SHALL BE VERIFIED BY CONTRACTOR.
  3. PROPERTY LINES DEPICTED ON THIS PLAN ARE BASED ON GIS TAX MAP DATA.
  4. ROAD CENTERLINES SHOWN ARE FROM PUBLICLY AVAILABLE DATA AND HAVE NOT BEEN SURVEYED.



MATERIAL			REFERENCE DRAWINGS		REVISIONS				APPROVALS		SCALE PLAN:		PREPARED FOR		SPIRE STL PIPELINE PROJECT			
TAG	QUANTITY	DESCRIPTION	DWG. NO.	TITLE	NO.	REVISIONS	DATE	DRAWN	CK	APPR	DRAWN BY	DATE	1" = 200'	Spire STL Pipeline	ALIGNMENT SHEET PROPOSED 24-INCH DIAMETER PIPELINE ST. CHARLES COUNTY, MISSOURI STA. 2844+84 TO STA. 2894+87			
1	4910'	PIPE, 24.000" OD X 0.375" WT, API-5L, X70, DSAW, FBE COATED			1	ISSUE FOR FER	01/2017	GH	EB	DGG	DP	07/2017	1" = 200'					
2	80'	PIPE, 24.000" OD X 0.500" WT, API-5L, X70, DSAW, FBE/ARO COATED			2	AMENDMENT TO FER	04/2017	DP	WH	DGG	CHECKED BY	DATE	SCALE PROFILE V: 1" = 200'	PREPARED BY	MOTT MACDONALD			
					3	FERC SUPPLEMENTAL FILING	07/2017	KAM	RJP	DGG	RJP	07/2017	CLIENT APPROVAL					
					4	FERC SUPPLEMENTAL FILING	10/2017	DP	RJP	DGG	ENG. APPROVAL	DATE		DATE	SCALE: 1" = 200'			
											D.G.G.	07/2017						DRAWING NO.
											P.M. APPROVAL	DATE						
											J.E.W.	07/2017						



OWNERSHIP / FOOTAGE	2894+87	1082 210'	1195 1348'	2894+87	857 503'	2894+87	7024 2252'	2894+87	789 687'	2894+87
STATIONING	2894+87 PROPERTY LINE									
	2910+45 PROPERTY LINE									
	2916+48 PROPERTY LINE									
	2938+00 PROPERTY LINE									
	2841+71 ENTER WETLAND WMO-TMA-005A									
	2842+78 EXIT WETLAND WMO-TMA-005A									
	2842+78 ENTER WETLAND WMO-TMA-005									
	2844+41 EXIT WETLAND WMO-TMA-005									
	2844+41 ENTER WETLAND WMO-TMA-005A									



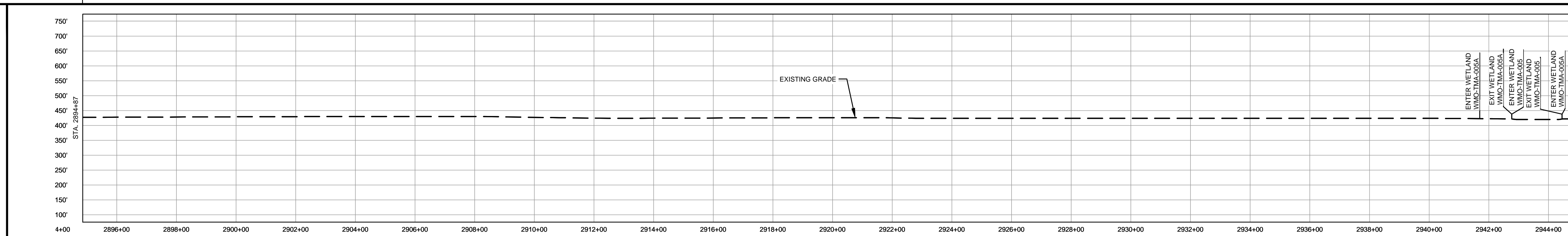
CLASS LOCATION/MAOP	CLASS 1 / 1440 PSIG									
MATERIAL & COATING	5000' (1)									
DESIGN FACTOR	0.72									
CONSTRUCTION METHOD	OPEN CUT									
PIPELINE COVER	7' MIN.									
SOILS	66019	66110	13598	66110						
LAND USE		AG								W

THE LOCATION OF TRENCH PLUGS AND WATERBARS ARE INTENDED TO BE USED AS A GUIDELINE ONLY. EXACT LOCATION TO BE DETERMINED IN THE FIELD AS DIRECTED BY THE CHIEF INSPECTOR.

PERMANENT WATERBAR WITH COMPOST FILTER  
SOOK AT WATERBAR DISCHARGE  
PERMANENT TRENCH PLUG

ILLINOIS		
SLOPE	SLOPE BREAKER SPACING (FT)	TRENCH PLUG SPACING (FT)
5-15%	300	300
15-30%	200	200
>30%	100	100

MISSOURI		
SLOPE	SLOPE BREAKER SPACING (FT)	TRENCH PLUG SPACING (FT)
<5%	125	---
5-10%	100	300
10-15%	75	300
15-20%	75	200
20-30%	50	200
30-35%	50	100
>35%	25	100



- NOTES:
- THE IMAGERY SHOWN WAS PROVIDED BY AERIAL DATA SERVICES, 2016. ADDITIONAL IMAGERY SUPPLEMENTED FROM USFWS-NWI AND USGS.
  - EXISTING FEATURES SHOWN WERE SURVEYED BY MOTT MACDONALD AND DIGITIZED FROM IMAGERY. ALL LOCATIONS ARE APPROXIMATE AND SHALL BE VERIFIED BY CONTRACTOR.
  - PROPERTY LINES DEPICTED ON THIS PLAN ARE BASED ON GIS TAX MAP DATA.
  - ROAD CENTERLINES SHOWN ARE FROM PUBLICLY AVAILABLE DATA AND HAVE NOT BEEN SURVEYED.

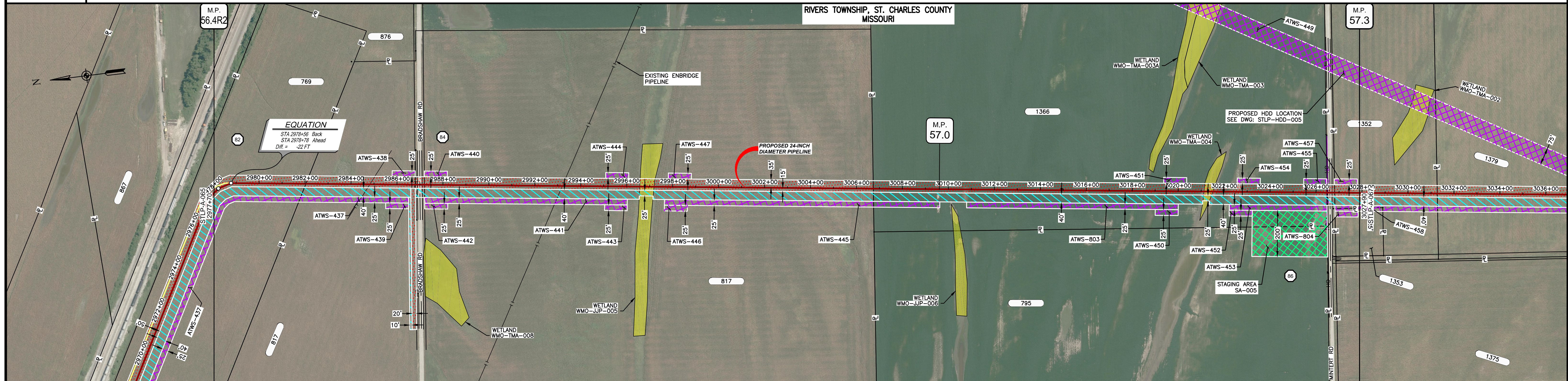
MATERIAL			REFERENCE DRAWINGS		REVISIONS				APPROVALS		SCALE PLAN		PREPARED FOR		SPIRE STL PIPELINE PROJECT		
TAG	QUANTITY	DESCRIPTION	DWG. NO.	TITLE	NO.	REVISIONS	DATE	DRAWN	CK	APPR	DRAWN BY	DATE	SCALE PLAN: 1" = 200'	PREPARED BY	ALIGNMENT SHEET		
1	5000'	PIPE, 24.000" OD X 0.375" WT, API-5L, X70, DSAW, FBE COATED			1	ISSUE FOR FERC	01/2017	GH	EB	DGG	DP	03/2017	SCALE PROFILE H: 1" = 200'		PROPOSED 24-INCH DIAMETER PIPELINE		
					2	AMENDMENT TO FERC	04/2017	KAM	WH	DGG	CHECKED BY	DATE	SCALE PROFILE V: 1" = 200'		ST. CHARLES COUNTY, MISSOURI		
					4	FERC SUPPLEMENTAL FILING	10/2017	DP	RJP	DGG	RJP	03/2017	CLIENT APPROVAL		STA. 2894+87 TO STA. 2944+87		
											ENG. APPROVAL	DATE	DATE		SCALE	DRAWING NO.	REVISION
											DGG	04/2017		1" = 200'	STLP-A-064	4	
											P.M. APPROVAL	DATE					
											JEV	04/2017					







OWNERSHIP / FOOTAGE	2977+71	769 413'	817 2469'	1366 1974'	3028+49 34 108'
STATIONING	2977+71	2982+08	2992+20	3006+75	3028+49



CLASS LOCATION/MAOP	CLASS 1 / 1440 PSIG										
MATERIAL & COATING	1										
DESIGN FACTOR	0.72										
CONSTRUCTION METHOD	OPEN CUT										
PIPELINE COVER	7' MIN.										
SOILS	66019	36023	66019	36023	66059	66019	66059	66019	66059	66019	66059
LAND USE	AG	D	AG	W	AG	AG	AG	W	AG	D	AG

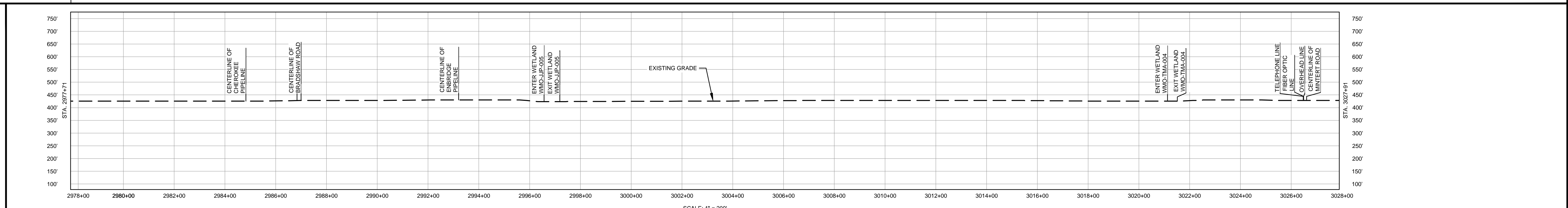
THE LOCATION OF TRENCH PLUGS AND WATERBARS ARE INTENDED TO BE USED AS A GUIDE ONLY. EXACT LOCATION TO BE DETERMINED IN THE FIELD AS DIRECTED BY THE CHIEF INSPECTOR.

PERMANENT WATERBAR WITH COMPOST FILTER  
SOAK AT WATERBAR DISCHARGE  
PERMANENT TRENCH PLUG

ILLINOIS		
SLOPE	SLOPE BREAKER SPACING (FT)	TRENCH PLUG SPACING (FT)
5-15%	300	300
15-30%	200	200
>30%	100	100

MISSOURI		
SLOPE	SLOPE BREAKER SPACING (FT)	TRENCH PLUG SPACING (FT)
<5%	125	---
5-10%	100	300
10-15%	75	300
15-20%	75	200
20-30%	50	200
30-35%	50	100
>35%	25	100



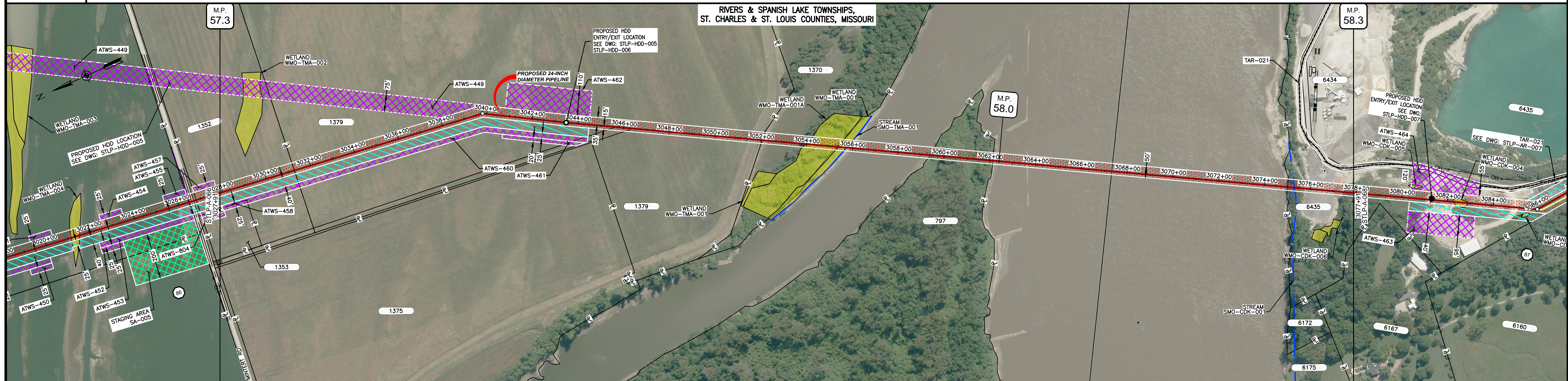
- NOTES:
1. THE IMAGERY SHOWN WAS PROVIDED BY AERIAL DATA SERVICES, 2016. ADDITIONAL IMAGERY SUPPLEMENTED FROM USFWS-NWI AND USGS.
  2. EXISTING FEATURES SHOWN WERE SURVEYED BY MOTT MACDONALD AND DIGITIZED FROM IMAGERY. ALL LOCATIONS ARE APPROXIMATE AND SHALL BE VERIFIED BY CONTRACTOR.
  3. PROPERTY LINES DEPICTED ON THIS PLAN ARE BASED ON GIS TAX MAP DATA.
  4. ROAD CENTERLINES SHOWN ARE FROM PUBLICLY AVAILABLE DATA AND HAVE NOT BEEN SURVEYED.

MATERIAL			REFERENCE DRAWINGS		REVISIONS				APPROVALS		SCALE PLAN		PREPARED FOR		SPIRE STL PIPELINE PROJECT			
TAG	QUANTITY	DESCRIPTION	DWG. NO.	TITLE	NO.	REVISIONS	DATE	DRAWN	CK	APPR	DRAWN BY	DATE	SCALE PLAN	SCALE PROFILE H	SCALE PROFILE V	ALIGNMENT SHEET		
1	4838'	PIPE, 24.000" OD X 0.375" WT, API-5L, X70, DSAW, FBE COATED	STLP-HDD-005	HDD PROFILE OVERVIEW - MISSOURI RIVER MAINLINE	1	ISSUE FOR FERC	1/2017	GH	EB	DGG	DP	04/2017	1" = 200'	1" = 200'	1" = 200'	PROPOSED 24-INCH DIAMETER PIPELINE		
2	160'	PIPE, 24.000" OD X 0.500" WT, API-5L, X70, DSAW, FBE/ARO COATED			2	AMENDMENT TO FERC	04/2017	KAM	WH	DGG	RJP	04/2017				ST. CHARLES COUNTY, MISSOURI		
					4	FERC SUPPLEMENTAL FILING	10/2017	DP	RJP	DGG						STA. 2977+71 TO STA. 3027+91		
											CLIENT APPROVAL		SCALE		DRAWING NO.		REVISION	
											DATE		1" = 200'		STLP-A-066		4	

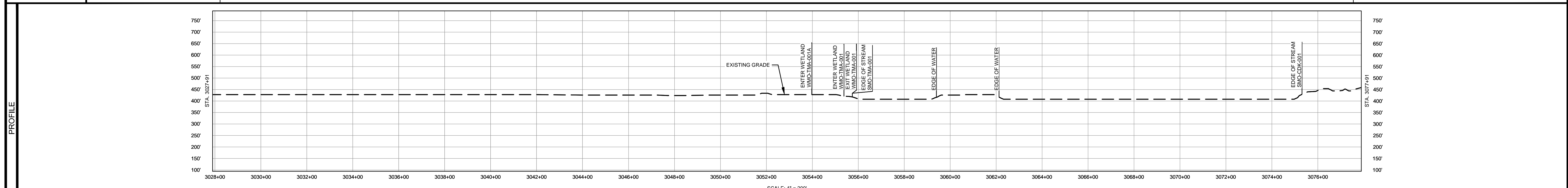
**M M**  
 MOTT MACDONALD



OWNERSHIP / FOOTAGE	3027+91	1382	338'	3031+28	1379	2078'	3035+207	1370	324'	3035+431	MISSOURI RIVER	797	273'	3039+415	MISSOURI RIVER	1287'	3075+402	6435	289'	3077+91	
STATIONING	<p>3031+28 PROPERTY LINE</p> <p>3035+207 PROPERTY LINE</p> <p>3035+431 PROPERTY LINE</p> <p>3039+415 PROPERTY LINE</p> <p>3075+402 PROPERTY LINE</p>																				



CLASS LOCATION/MAOP	CLASS I / 1440 PSIG																			
MATERIAL & COATING	1560'										3440'									
DESIGN FACTOR	0.72										0.5									
CONSTRUCTION METHOD	OPEN CUT										HDD									
PIPELINE COVER	7 MIN.																			
SOILS	66059										66019									
LAND USE	AG										F W OW F OW D									



- NOTES:
1. THE IMAGERY SHOWN WAS PROVIDED BY AERIAL DATA SERVICES, 2016. ADDITIONAL IMAGERY SUPPLEMENTED FROM USFWS-NWI AND USGS.
  2. EXISTING FEATURES SHOWN WERE SURVEYED BY MOTT MACDONALD AND DIGITIZED FROM IMAGERY. ALL LOCATIONS ARE APPROXIMATE AND SHALL BE VERIFIED BY CONTRACTOR.
  3. PROPERTY LINES DEPICTED ON THIS PLAN ARE BASED ON GIS TAX MAP DATA.
  4. ROAD CENTERLINES SHOWN ARE FROM PUBLICLY AVAILABLE DATA AND HAVE NOT BEEN SURVEYED.

MATERIAL			REFERENCE DRAWINGS			REVISIONS				APPROVALS			SCALE PLAN:		PREPARED FOR		SPIRE STL PIPELINE PROJECT			
TAG	QUANTITY	DESCRIPTION	DWG. NO.	TITLE	NO.	REVISIONS	DATE	DRAWN	CK	APPR	DRAWN BY	DATE	SCALE PLAN:	SCALE PROFILE H:	SCALE PROFILE V:	PREPARED BY	SCALE	DRAWING NO.	REVISION	
1	1560'	PIPE, 24.000" OD X 0.375" WT, API-5L, X70, DSAW, FBE COATED	STLP-HDD-005	HDD PROFILE OVERVIEW - MISSOURI RIVER MAINLINE	1	ISSUE FOR FERC	01/2017	GH	EB	DGG	DP	07/2017	1" = 200'	1" = 200'	1" = 200'	Spire STL Pipeline	1" = 200'	STLP-A-067	4	
2	3440'	PIPE, 24.000" OD X 0.500" WT, API-5L, X70, DSAW, FBE/ARO COATED	STLP-HDD-006	HDD PROFILE OVERVIEW - MISSOURI RIVER MAINLINE	2	AMENDMENT TO FERC	04/2017	DP	AK	DGG										
			STLP-HDD-007	HDD PROFILE OVERVIEW - MISSOURI RIVER MAINLINE	3	FERC SUPPLEMENTAL FILING	07/2017	KAM	RJP	DGG										
			STLP-AR-007	ACCESS ROAD DRAWING	4	FERC SUPPLEMENTAL FILING	10/2017	DP	RJP	DGG										
											CLIENT APPROVAL		PREPARED BY							
											DATE		DATE							
											J.E.W. 07/2017									



