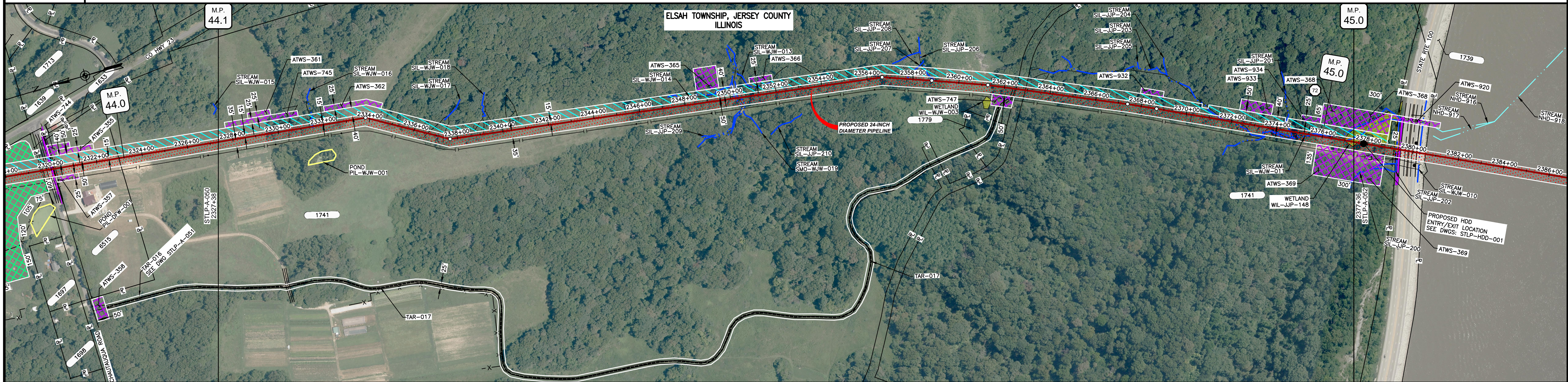
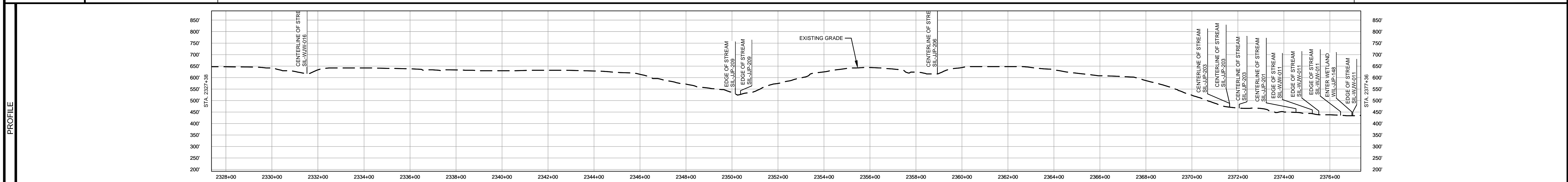


OWNERSHIP / FOOTAGE	2327+38	1741 3511'	PIASA BLUFFS ROAD 2362+48	1741 1447'	2377+36
STATIONING	2329+00 CENTERLINE OF DITCH 2331+54 CENTERLINE OF STREAM SIL-WJW-016 2331+60 CENTERLINE OF DITCH 2333+08 STIP-A-052 BT 2336+00 CENTERLINE OF DITCH 2337+90 CENTERLINE OF DITCH 2338+00 CENTERLINE OF DITCH 2339+14 CENTERLINE OF DITCH 2350+00 EDGE OF STREAM SIL-JJP-209 2350+00 CENTERLINE OF DITCH 2350+98 EDGE OF STREAM SIL-JJP-209 2359+28 CENTERLINE OF DITCH 2359+66 STIP-A-052 BT 2359+72 CENTERLINE OF DITCH 2359+84 STIP-A-052 BT 2359+95 CENTERLINE OF DITCH 2359+95 CENTERLINE OF STREAM SIL-JJP-208 2361+28 STIP-A-052 BT 2364+49 PROPERTY LINE 2364+49 PROPERTY LINE 2367+98 STIP-A-052 BT 2368+68 STIP-A-052 BT 2371+65 CENTERLINE OF STREAM SIL-JJP-203 2371+07 CENTERLINE OF STREAM SIL-JJP-203 2372+22 CENTERLINE OF DITCH 2374+54 CENTERLINE OF STREAM SIL-JJP-201 2374+46 CENTERLINE OF DITCH 2376+26 EDGE OF STREAM SIL-WJW-011 2376+45 EDGE OF STREAM SIL-WJW-011 2376+60 CENTERLINE OF DITCH 2376+60 EDGE OF WETLAND WIL-JJP-148 2376+60 EDGE OF WETLAND WIL-JJP-148 2377+07 EDGE OF STREAM SIL-WJW-011				



CLASS LOCATION/MAOP	CLASS 1 / 1440 PSIG																	
MATERIAL & COATING	4998' (1)																	
DESIGN FACTOR	0.72																	
CONSTRUCTION METHOD	OPEN CUT		OPEN CUT (FLUMED)		OPEN CUT				OPEN CUT (FLUMED)		OPEN CUT		OPEN CUT (FLUMED)		OPEN CUT			
PIPELINE COVER	5' MIN.																	
SOILS	79C2		833G		79C2		833G		79D2		833G		79D2		833G		3475A	
LAND USE	AG		F		OL		F		OL		F		OW		F		OW	



NOTES:
 1. THE IMAGERY SHOWN WAS PROVIDED BY AERIAL DATA SERVICES, 2016. ADDITIONAL IMAGERY SUPPLEMENTED FROM USFWS-NWI AND USGS.
 2. EXISTING FEATURES SHOWN WERE SURVEYED BY MOTT MACDONALD AND DIGITIZED FROM IMAGERY. ALL LOCATIONS ARE APPROXIMATE AND SHALL BE VERIFIED BY CONTRACTOR.
 3. PROPERTY LINES DEPICTED ON THIS PLAN ARE BASED ON GIS TAX MAP DATA.
 4. ROAD CENTERLINES SHOWN ARE FROM PUBLICLY AVAILABLE DATA AND HAVE NOT BEEN SURVEYED.

MATERIAL			REFERENCE DRAWINGS			REVISIONS			APPROVALS			PREPARED FOR		SPIRE STL PIPELINE PROJECT	
TAG	QUANTITY	DESCRIPTION	DWG. NO.	TITLE	NO.	REVISIONS	DATE	DRAWN BY	CK	APPR	DRAWN BY	DATE	SCALE PLAN: 1" = 200'	SCALE PROFILE H: 1" = 200'	SCALE PROFILE V: 1" = 200'
1	4998'	PIPE, 24.000" OD X 0.375" WT, API-5L, X70, DSAW, FBE COATED	STLP-AR-005	ACCESS ROAD SITE PLAN - TAR-017	1	ISSUE FOR FERC	01/2017	GH	EB	DGG	DP	03/2017			
			STLP-HDD-001	HDD PROFILE OVERVIEW	2	AMENDMENT TO FERC	04/2017	KAM	RJP	DGG					
					3	FERC SUPPLEMENTAL FILING	07/2017	KAM	RJP	DGG					
					4	FERC SUPPLEMENTAL FILING	10/2017	DP	RJP	DGG					

Spire STL Pipeline

PREPARED BY

MOTT MACDONALD

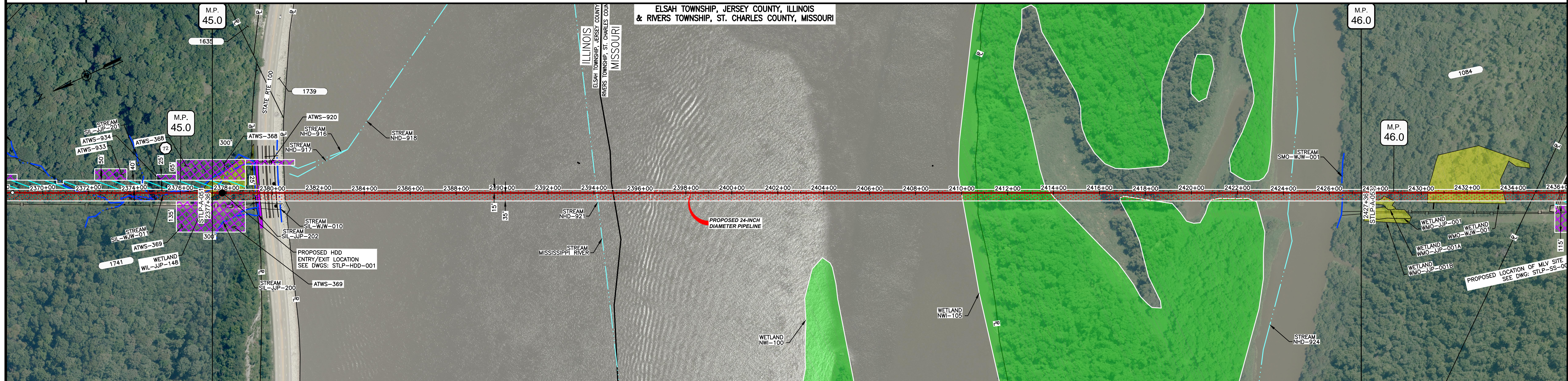
SCALE PLAN: 1" = 200'
 SCALE PROFILE H: 1" = 200'
 SCALE PROFILE V: 1" = 200'

CLIENT APPROVAL

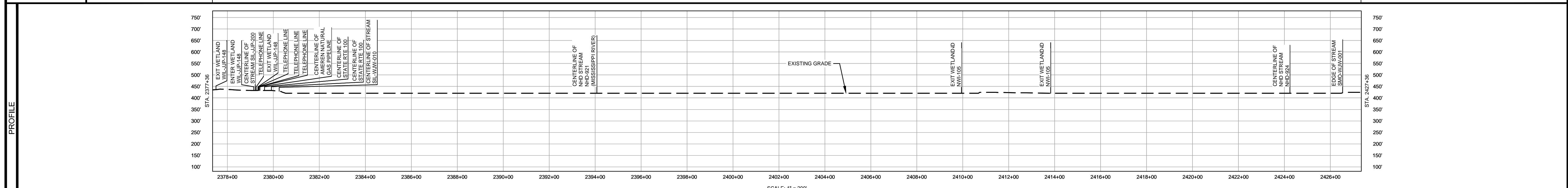
DATE

SPIRE STL PIPELINE PROJECT		
ALIGNMENT SHEET		
PROPOSED 24-INCH DIAMETER PIPELINE		
JERSEY COUNTY, ILLINOIS		
STA. 2327+38 TO STA. 2377+36		
SCALE	DRAWING NO.	REVISION
1" = 200'	STLP-A-051	4

OWNERSHIP / FOOTAGE	2377+36	1741	184	1739	2379+20	132	2380+52	3013	2410+85	1084	1671	2427+36
STATIONING	<p>2377+51 EXIT WETLAND WIL-JP-148</p> <p>2379+15 ENTER WETLAND WIL-JP-148</p> <p>2379+20 CENTERLINE OF STREAM SIL-JP-200</p> <p>2379+20 PROPERTY LINE</p> <p>2379+20 TELEPHONE LINE</p> <p>2379+30 CENTERLINE OF DITCH</p> <p>2379+30 EXIT WETLAND WIL-JP-148</p> <p>2379+35 TELEPHONE LINE</p> <p>2379+35 TELEPHONE LINE</p> <p>2379+45 TELEPHONE LINE</p> <p>2379+45 TELEPHONE LINE</p> <p>2379+45 CENTERLINE OF AMBERN NATURAL GAS PIPELINE</p> <p>2379+45 CENTERLINE OF STATE RTE 100</p> <p>2379+75 CONCRETE</p> <p>2379+75 CONCRETE</p> <p>2380+12 CENTERLINE OF STATE RTE 100</p> <p>2380+12 EDGE OF PAVEMENT</p> <p>2380+14 GUARDRAIL</p> <p>2380+08 CENTERLINE OF STREAM SIL-WW-010</p> <p>2380+08 PROPERTY LINE</p> <p>2384+08 CENTERLINE OF NHD STREAM NHD-921 (MISSISSIPPI RIVER)</p> <p>2384+08 COUNTY LINE</p> <p>2384+08 MUNICIPAL BOUNDARY</p> <p>2384+08 ILLINOIS/MISSOURI STATE BOUNDARY</p> <p>2409+85 ENTER WETLAND NWI-105</p> <p>2410+85 PROPERTY LINE</p> <p>2419+84 EXIT WETLAND NWI-105</p> <p>2427+36 CENTERLINE OF NHD STREAM NHD-924</p> <p>2429+51 EDGE OF STREAM SMO-WW-001</p>											



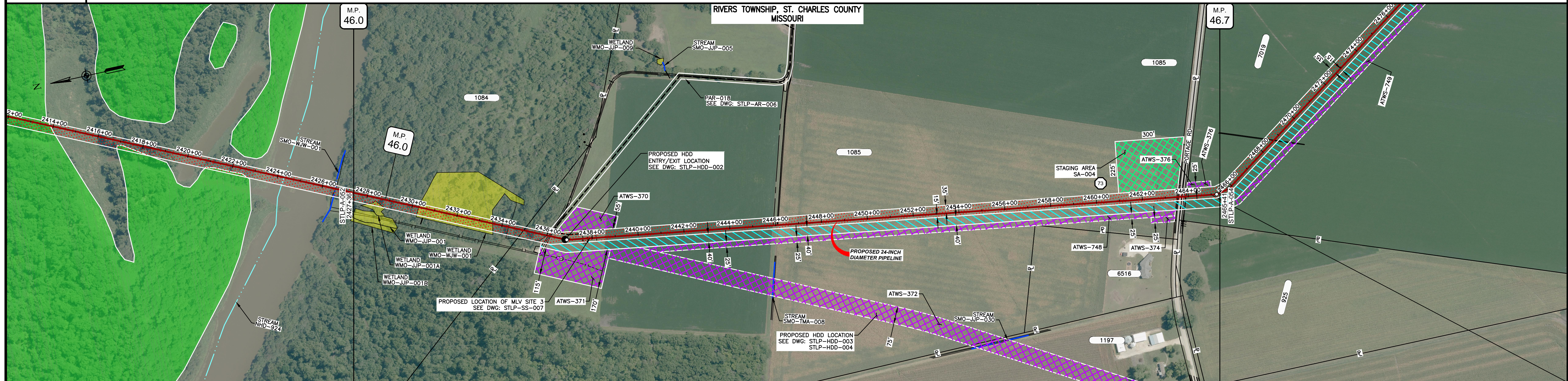
CLASS LOCATION/MAOP	CLASS 1 / 1440 PSIG															
MATERIAL & COATING	<p>2377+36</p> <p>2377+79</p> <p>43'</p> <p>1</p> <p>4957'</p> <p>2</p> <p>2427+36</p>															
DESIGN FACTOR	0.72						0.5									
CONSTRUCTION METHOD	OPEN CUT						HDD									
PIPELINE COVER	7' MIN.															
SOILS	3475A				W				99001				66066			
LAND USE	W	F	W	F	D	OL	OW				W	OW				F



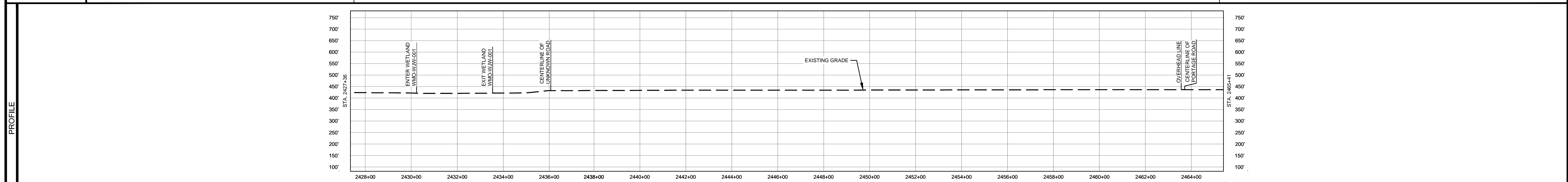
- NOTES:
1. THE IMAGERY SHOWN WAS PROVIDED BY AERIAL DATA SERVICES, 2016. ADDITIONAL IMAGERY SUPPLEMENTED FROM USFWS-NWI AND USGS.
 2. EXISTING FEATURES SHOWN WERE SURVEYED BY MOTT MACDONALD AND DIGITIZED FROM IMAGERY. ALL LOCATIONS ARE APPROXIMATE AND SHALL BE VERIFIED BY CONTRACTOR.
 3. PROPERTY LINES DEPICTED ON THIS PLAN ARE BASED ON GIS TAX MAP DATA.
 4. ROAD CENTERLINES SHOWN ARE FROM PUBLICLY AVAILABLE DATA AND HAVE NOT BEEN SURVEYED.

MATERIAL			REFERENCE DRAWINGS		REVISIONS				APPROVALS		PREPARED FOR		SPIRE STL PIPELINE PROJECT			
TAG	QUANTITY	DESCRIPTION	DWG. NO.	TITLE	NO.	REVISIONS	DATE	DRAWN	CK	APPR	DRAWN BY	DATE	SCALE PLAN: 1" = 200'		ALIGNMENT SHEET	
1	43	PIPE, 24.000" OD X 0.375" WT, API-5L, X70, DSAW, FBE COATED	STLP-HDD-001	HDD PROFILE OVERVIEW - MISSISSIPPI RIVER MAINLINE	1	ISSUE FOR FERC	01/2017	GH	EB	DGG	GG	07/2017	SCALE PROFILE H: 1" = 200'		PROPOSED 24-INCH DIAMETER PIPELINE	
2	4957'	PIPE, 24.000" OD X 0.500" WT, API-5L, X70, DSAW, FBE/ARO COATED			2	AMENDMENT TO FERC	04/2017	KAM	RJP	DGG			SCALE PROFILE V: 1" = 200'		JERSEY COUNTY, ILLINOIS & ST. CHARLES COUNTY, MISSOURI	
					3	FERC SUPPLEMENTAL FILING	07/2017	KAM	RJP	DGG			CLIENT APPROVAL		STA. 2377+36 TO STA. 2427+36	
					4	FERC SUPPLEMENTAL FILING	10/2017	DP	RJP	DGG			PREPARED BY		SCALE	
													MOTT MACDONALD		DRAWING NO. STLP-A-052	
													REVISION		4	

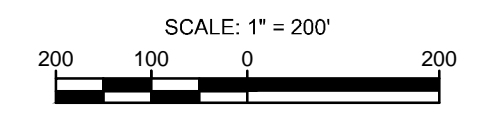
OWNERSHIP / FOOTAGE	2427+36	1084	756'	2434+92	1085	2878'	2465+41	7019	166'	2465+41
STATIONING	<p>2427+36 ENTER WETLAND WMO-WJW-001</p> <p>2430+00 EXIT WETLAND WMO-WJW-001</p> <p>2434+92 PROPERTY LINE</p> <p>2438+00 EDGE OF GRAVEL</p> <p>2439+00 CENTERLINE OF UNKNOWN ROAD</p> <p>2450+00 EDGE OF GRAVEL</p> <p>2450+00 CENTERLINE OF DITCH</p> <p>2465+41 CENTERLINE OF DITCH</p> <p>2465+41 OVERHEAD LINE</p> <p>2465+41 EDGE OF PAVEMENT</p> <p>2465+41 CENTERLINE OF PORTAGE ROAD</p> <p>2465+41 PROPERTY LINE</p> <p>2465+41 EDGE OF PAVEMENT</p> <p>2465+41 CENTERLINE OF DITCH</p> <p>2465+41 CENTERLINE OF DITCH</p>									



CLASS LOCATION/MAOP	CLASS I / 1440 PSIG									
MATERIAL & COATING	2427+36	2434+92	2437+60	2438+20	2445+00	2465+41	2465+41	2465+41	2465+41	2465+41
DESIGN FACTOR	0.5		0.72		0.72		0.6		0.72	
CONSTRUCTION METHOD	HDD		HDD		OPEN CUT		BORE		OPEN CUT	
PIPELINE COVER	7' MIN.									
SOILS	66066		66100		66066		66100		66100	
LAND USE	F		W		F		AG		D AG	

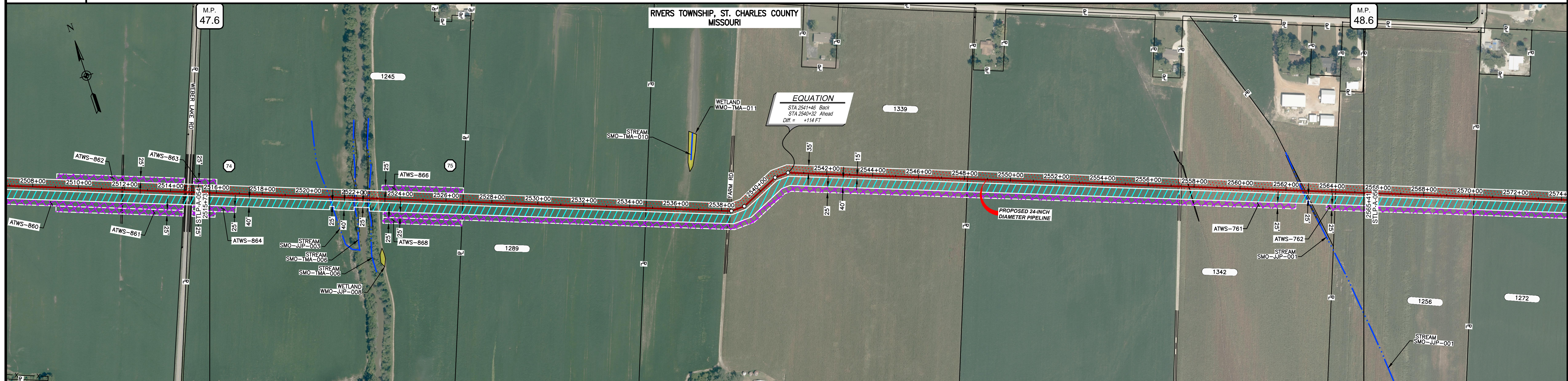


- NOTES:
1. THE IMAGERY SHOWN WAS PROVIDED BY AERIAL DATA SERVICES, 2016. ADDITIONAL IMAGERY SUPPLEMENTED FROM USFWS-NWI AND USGS.
 2. EXISTING FEATURES SHOWN WERE SURVEYED BY MOTT MACDONALD AND DIGITIZED FROM IMAGERY. ALL LOCATIONS ARE APPROXIMATE AND SHALL BE VERIFIED BY CONTRACTOR.
 3. PROPERTY LINES DEPICTED ON THIS PLAN ARE BASED ON GIS TAX MAP DATA.
 4. ROAD CENTERLINES SHOWN ARE FROM PUBLICLY AVAILABLE DATA AND HAVE NOT BEEN SURVEYED.

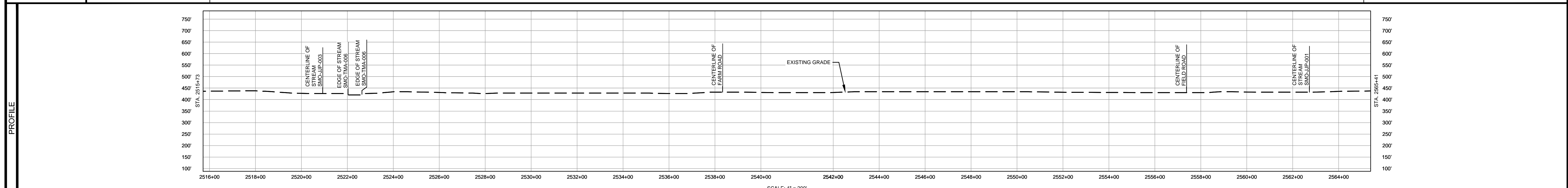


MATERIAL			REFERENCE DRAWINGS		REVISIONS				APPROVALS			PREPARED FOR		SPIRE STL PIPELINE PROJECT			
TAG	QUANTITY	DESCRIPTION	DWG. NO.	TITLE	NO.	REVISIONS	DATE	DRAWN	CK	APPR	DRAWN BY	DATE	SCALE PLAN: 1" = 200'		PROPOSED ALIGNMENT SHEET ST. CHARLES COUNTY, MISSOURI STA. 2427+36 TO STA. 2465+41		
1	2711'	PIPE, 24.000" OD X 0.375" WT, API-5L, X70, DSAW, FBE COATED	STLP-AR-006	ACCESS ROAD SITE PLAN - PAR-018	1	ISSUE FOR FERC	01/2017	GH	EB	DGG	DP	07/2017	SCALE PROFILE H: 1" = 200'				
2	1029'	PIPE, 24.000" OD X 0.500" WT, API-5L, X70, DSAW, FBE/ARO COATED	STLP-HDD-002	HDD PROFILE OVERVIEW - MISSISSIPPI RIVER MAINLINE	2	AMENDMENT TO FERC	04/2017	KAM	RJP	DGG	CHECKED BY	DATE	CLIENT APPROVAL	SCALE	DRAWING NO.	REVISION	
REF	60'	SEE REFERENCED DETAIL DRAWING	STLP-HDD-003	HDD PROFILE OVERVIEW - MISSISSIPPI RIVER MAINLINE	3	FERC SUPPLEMENTAL FILING	07/2017	KAM	RJP	DGG	ENG. APPROVAL	DATE	DATE	1" = 200'	STLP-A-053	4	
			STLP-HDD-004	HDD PROFILE OVERVIEW - MISSISSIPPI RIVER MAINLINE	4	FERC SUPPLEMENTAL FILING	10/2017	DP	RJP	DGG	P.M. APPROVAL	DATE	DATE				
			STLP-SS-007	24" PIPELINE MLV SITE 3							JEV	07/2017					

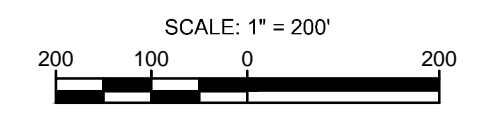
OWNERSHIP / FOOTAGE	1245 1102'	1289 798'	1339 1456'	1342 1471'	1256 133'	1272 122'	
STATIONING	2509+04 CENTERLINE OF STREAM SMO-JJP-003 2509+05 EDGE OF STREAM SMO-TMA-008 2509+06 EDGE OF STREAM SMO-TMA-006 2509+10 PROPERTY LINE	2509+13 PROPERTY LINE	2509+14 CENTERLINE OF FARM ROAD 2509+14 EDGE OF GRAVEL 2509+14 EDGE OF GRAVEL 2509+14.5 22' 3000' L.L. 2509+15 22' 3000' L.L. 2509+15.5 22' 3000' L.L. 2509+16 22' 3000' L.L.	2509+15 PROPERTY LINE	2509+16 EDGE OF GRAVEL 2509+16 CENTERLINE OF FIELD ROAD 2509+16 EDGE OF GRAVEL 2509+16 CENTERLINE OF DITCH	2509+16 CENTERLINE OF STREAM SMO-JJP-001 2509+16 CENTERLINE OF DITCH 2509+16 PROPERTY LINE 2509+16 PROPERTY LINE	2509+18 PROPERTY LINE



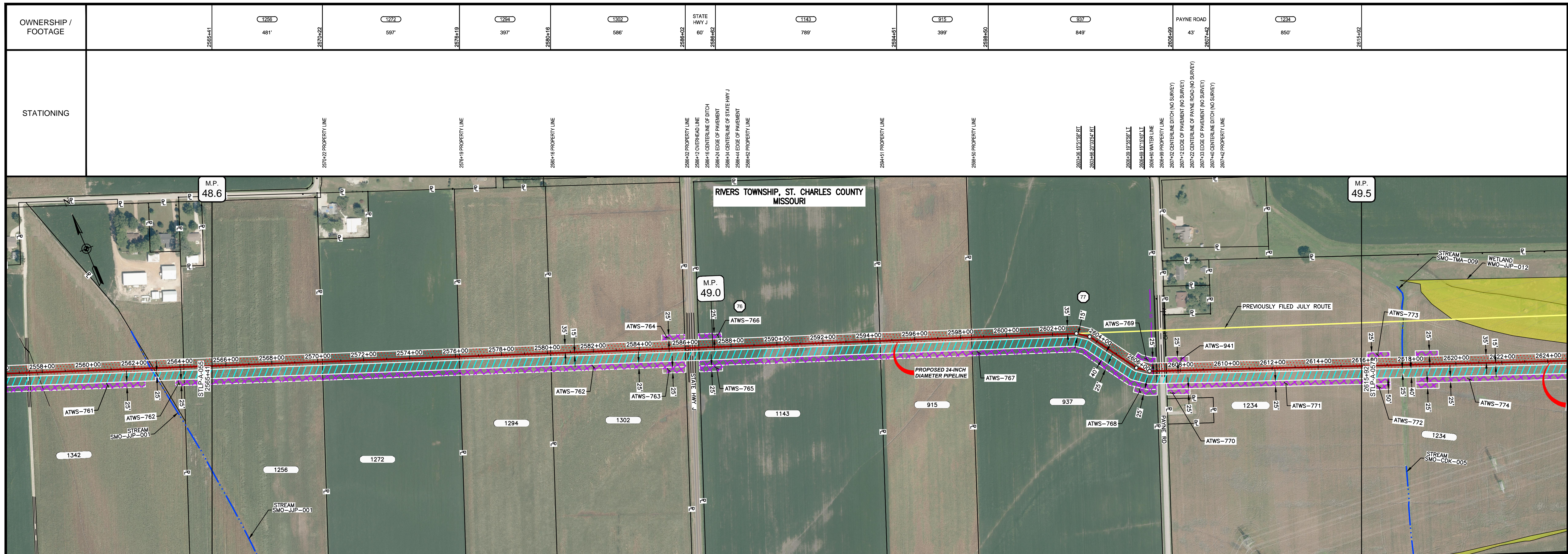
CLASS LOCATION/MAOP	CLASS 1 / 1440 PSIG											
MATERIAL & COATING	5082' (1)											
DESIGN FACTOR	0.72											
CONSTRUCTION METHOD	OPEN CUT	OPEN CUT (FLUMED)	OPEN CUT	OPEN CUT (FLUMED)	OPEN CUT					OPEN CUT (FLUMED)	OPEN CUT	
PIPELINE COVER	7' MIN.											
SOILS	66066	64016	64024	64016	64024	64016	64024	66066	64024	66066	64016	66066
LAND USE	AG			F	OW	F	AG			OL	AG	



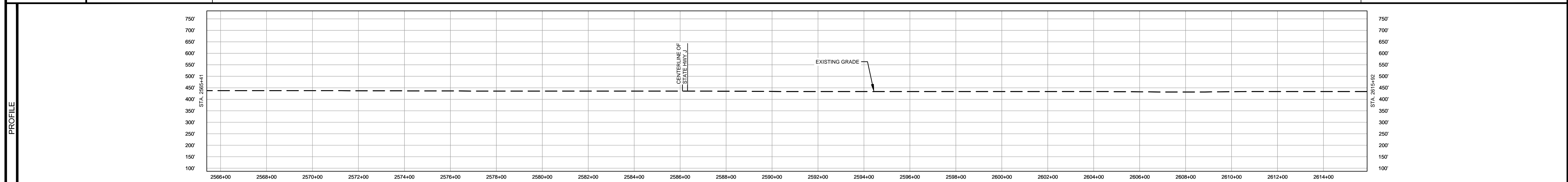
- NOTES:
1. THE IMAGERY SHOWN WAS PROVIDED BY AERIAL DATA SERVICES, 2016. ADDITIONAL IMAGERY SUPPLEMENTED FROM USFWS-NWI AND USGS.
 2. EXISTING FEATURES SHOWN WERE SURVEYED BY MOTT MACDONALD AND DIGITIZED FROM IMAGERY. ALL LOCATIONS ARE APPROXIMATE AND SHALL BE VERIFIED BY CONTRACTOR.
 3. PROPERTY LINES DEPICTED ON THIS PLAN ARE BASED ON GIS TAX MAP DATA.
 4. ROAD CENTERLINES SHOWN ARE FROM PUBLICLY AVAILABLE DATA AND HAVE NOT BEEN SURVEYED.



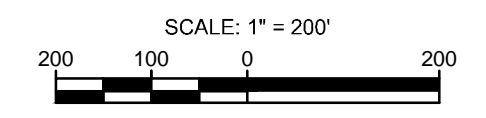
MATERIAL			REFERENCE DRAWINGS		REVISIONS				APPROVALS			PREPARED FOR		SPIRE STL PIPELINE PROJECT			
TAG	QUANTITY	DESCRIPTION	DWG. NO.	TITLE	NO.	REVISIONS	DATE	DRAWN	CK	APPR	DRAWN BY	DATE	SCALE PLAN: 1" = 200'	SPIRE STL Pipeline	ALIGNMENT SHEET PROPOSED 24-INCH DIAMETER PIPELINE ST. CHARLES COUNTY, MISSOURI STA. 2515+73 TO STA. 2565+41		
1	5082'	PIPE, 24.000" OD X 0.375" WT, API-5L, X70, DSAW, FBE COATED			1	ISSUE FOR FERC	01/2017	GH	EB	DGG	DP	03/2017	SCALE PROFILE H: 1" = 200'				
					2	AMENDMENT TO FERC	04/2017	KAM	RJP	DGG	CHECKED BY	DATE	SCALE PROFILE V: 1" = 200'	PREPARED BY	SCALE: 1" = 200'		
					4	FERC SUPPLEMENTAL FILING	10/2017	DP	RJP	DGG	RJP	03/2017	CLIENT APPROVAL				
											ENG. APPROVAL	DATE	DATE	REVISION			
											DGG	04/2017	DATE				
											P.M. APPROVAL	DATE	DATE				
											JEV	04/2017	DATE				



CLASS LOCATION/MAOP	CLASS 1 / 1440 PSIG																																					
MATERIAL & COATING	<table border="1"> <tr> <td>2558+00 to 2565+41</td> <td>2565+41 to 2586+42</td> <td>2586+42 to 2588+74</td> <td>2588+74 to 2590+00</td> <td>2590+00 to 2592+00</td> <td>2592+00 to 2594+00</td> <td>2594+00 to 2596+00</td> <td>2596+00 to 2598+00</td> <td>2598+00 to 2600+00</td> <td>2600+00 to 2602+00</td> <td>2602+00 to 2604+00</td> <td>2604+00 to 2606+42</td> <td>2606+42 to 2607+42</td> <td>2607+42 to 2615+92</td> </tr> <tr> <td>1</td> <td>2</td> <td>1</td> <td>1</td> <td>1</td> <td>1</td> <td>1</td> <td>1</td> <td>1</td> <td>1</td> <td>1</td> <td>2</td> <td>1</td> <td>1</td> </tr> </table>										2558+00 to 2565+41	2565+41 to 2586+42	2586+42 to 2588+74	2588+74 to 2590+00	2590+00 to 2592+00	2592+00 to 2594+00	2594+00 to 2596+00	2596+00 to 2598+00	2598+00 to 2600+00	2600+00 to 2602+00	2602+00 to 2604+00	2604+00 to 2606+42	2606+42 to 2607+42	2607+42 to 2615+92	1	2	1	1	1	1	1	1	1	1	1	2	1	1
2558+00 to 2565+41	2565+41 to 2586+42	2586+42 to 2588+74	2588+74 to 2590+00	2590+00 to 2592+00	2592+00 to 2594+00	2594+00 to 2596+00	2596+00 to 2598+00	2598+00 to 2600+00	2600+00 to 2602+00	2602+00 to 2604+00	2604+00 to 2606+42	2606+42 to 2607+42	2607+42 to 2615+92																									
1	2	1	1	1	1	1	1	1	1	1	2	1	1																									
DESIGN FACTOR	0.72																																					
CONSTRUCTION METHOD	OPEN CUT																																					
PIPELINE COVER	7 MIN.																																					
SOILS	66066	64024	66066	66100	64016	66100	64016	66100	64016	66100	64016	66100	64016																									
LAND USE	AG																																					

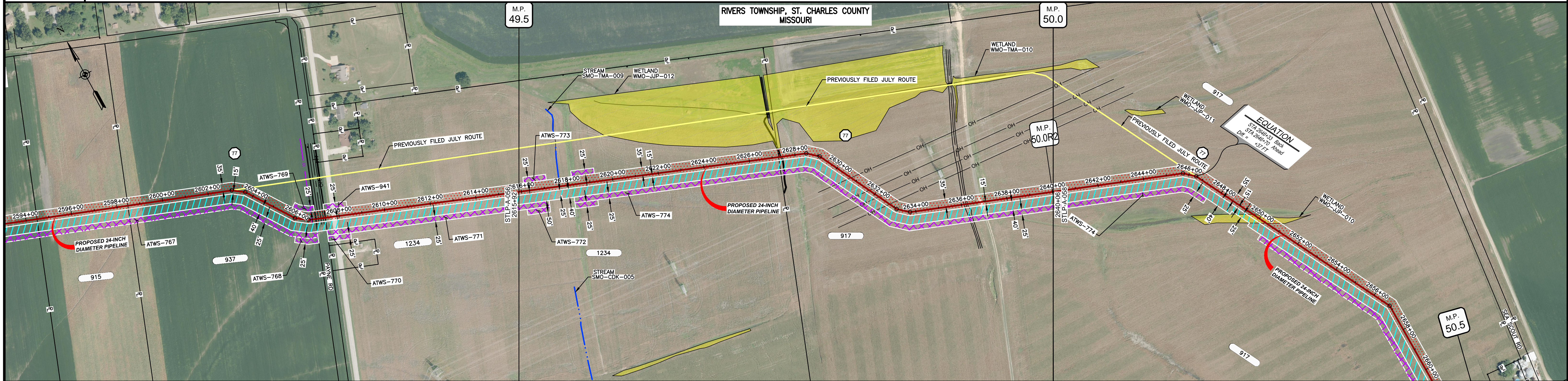


- NOTES:
1. THE IMAGERY SHOWN WAS PROVIDED BY AERIAL DATA SERVICES, 2016. ADDITIONAL IMAGERY SUPPLEMENTED FROM USFWS-NWI AND USGS.
 2. EXISTING FEATURES SHOWN WERE SURVEYED BY MOTT MACDONALD AND DIGITIZED FROM IMAGERY. ALL LOCATIONS ARE APPROXIMATE AND SHALL BE VERIFIED BY CONTRACTOR.
 3. PROPERTY LINES DEPICTED ON THIS PLAN ARE BASED ON GIS TAX MAP DATA.
 4. ROAD CENTERLINES SHOWN ARE FROM PUBLICLY AVAILABLE DATA AND HAVE NOT BEEN SURVEYED.

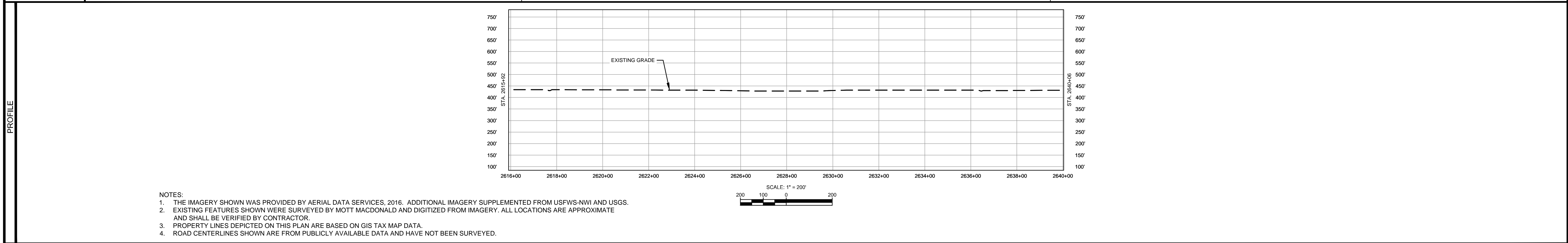


MATERIAL		REFERENCE DRAWINGS		REVISIONS				APPROVALS			PREPARED FOR		SPIRE STL PIPELINE PROJECT			
TAG	QUANTITY	DESCRIPTION	DWG. NO.	TITLE	NO.	REVISIONS	DATE	DRAWN	CK	APPR	DRAWN BY	DATE	SCALE PLAN: 1" = 200'	Spire STL Pipeline PREPARED BY: M M MOTT MACDONALD SCALE: 1" = 200' DRAWING NO.: STLP-A-056 REVISION: 4		
1	4891'	PIPE, 24.000" OD X 0.375" WT, API-5L, X70, DSAW, FBE COATED			1	ISSUE FOR FERC	01/2017	GH	EB	DGG	DP	03/2017	SCALE PROFILE H: 1" = 200'			
2	160'	PIPE, 24.000" OD X 0.500" WT, API-5L, X70, DSAW, FBE/ARO COATED			2	AMENDMENT TO FERC	04/2017	KAM	RJP	DGG	CHECKED BY	DATE	SCALE PROFILE V: 1" = 200'			
					4	FERC SUPPLEMENTAL FILING	10/2017	DP	RJP	DGG	GH	03/2017				
											ENG. APPROVAL	DATE	CLIENT APPROVAL			
											DGG	04/2017	DATE			
											P.M. APPROVAL	DATE				
											JEV	04/2017				

OWNERSHIP / FOOTAGE		2615+92	1234	2627+91	917	2640+06
STATIONING			1139'		1275'	



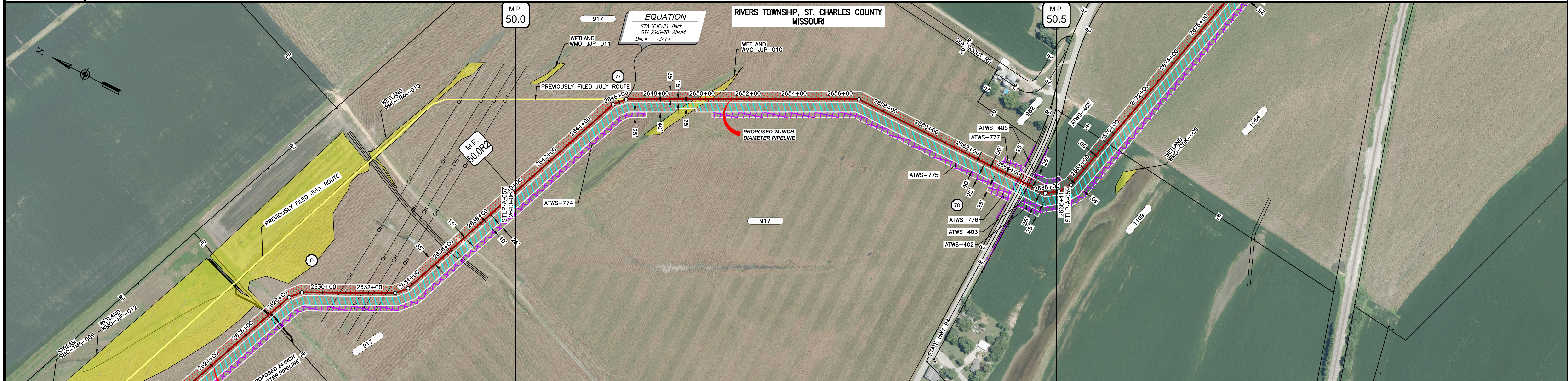
CLASS LOCATION/MAOP		CLASS I / 1440 PSIG
MATERIAL & COATING		2414' (1)
DESIGN FACTOR		0.72
CONSTRUCTION METHOD		OPEN CUT
PIPELINE COVER		7' MIN.
SOILS		64016
LAND USE		66100



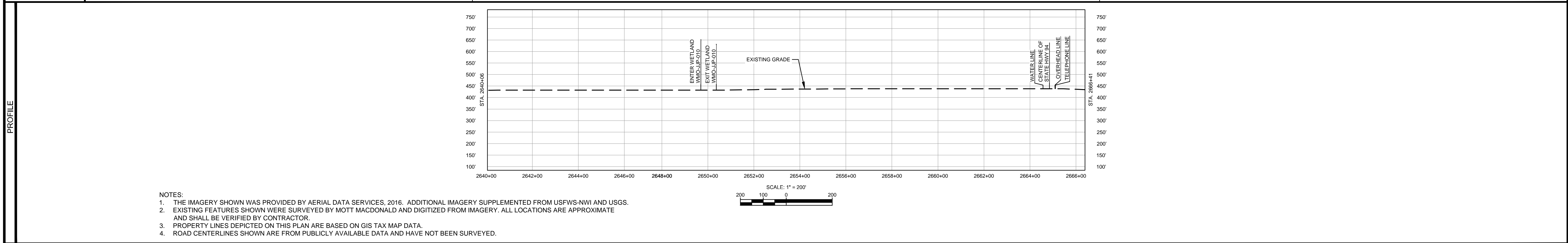
- NOTES:
1. THE IMAGERY SHOWN WAS PROVIDED BY AERIAL DATA SERVICES, 2016. ADDITIONAL IMAGERY SUPPLEMENTED FROM USFWS-NWI AND USGS.
 2. EXISTING FEATURES SHOWN WERE SURVEYED BY MOTT MACDONALD AND DIGITIZED FROM IMAGERY. ALL LOCATIONS ARE APPROXIMATE AND SHALL BE VERIFIED BY CONTRACTOR.
 3. PROPERTY LINES DEPICTED ON THIS PLAN ARE BASED ON GIS TAX MAP DATA.
 4. ROAD CENTERLINES SHOWN ARE FROM PUBLICLY AVAILABLE DATA AND HAVE NOT BEEN SURVEYED.

MATERIAL			REFERENCE DRAWINGS		REVISIONS				APPROVALS			PREPARED FOR		SPIRE STL PIPELINE PROJECT						
TAG	QUANTITY	DESCRIPTION	DWG. NO.	TITLE	NO.	REVISIONS	DATE	DRAWN	CK	APPR	DRAWN BY	DATE	SCALE PLAN:	SCALE PROFILE H:	SCALE PROFILE V:	PREPARED BY	SCALE	DRAWING NO.	REVISION	
1	2414'	PIPE, 24.000" OD X 0.375" WT, API-5L, X70, DSAW, FBE COATED			1	ISSUE FOR FERC	01/2017	GH	EB	DGG	DP	03/2017	1" = 200'	1" = 200'	1" = 200'	M M MOTT MACDONALD	1" = 200'	STLP-A-057	4	
					2	AMENDMENT TO FERC	04/2017	KAM	RJP	DGG										
					4	FERC SUPPLEMENTAL FILING	10/2017	DP	RJP	DGG										
											JEV	04/2017								

OWNERSHIP / FOOTAGE		2640+06	2419'	STATE HWY 94 25 2684+86	1109 155' 2666+41
STATIONING					



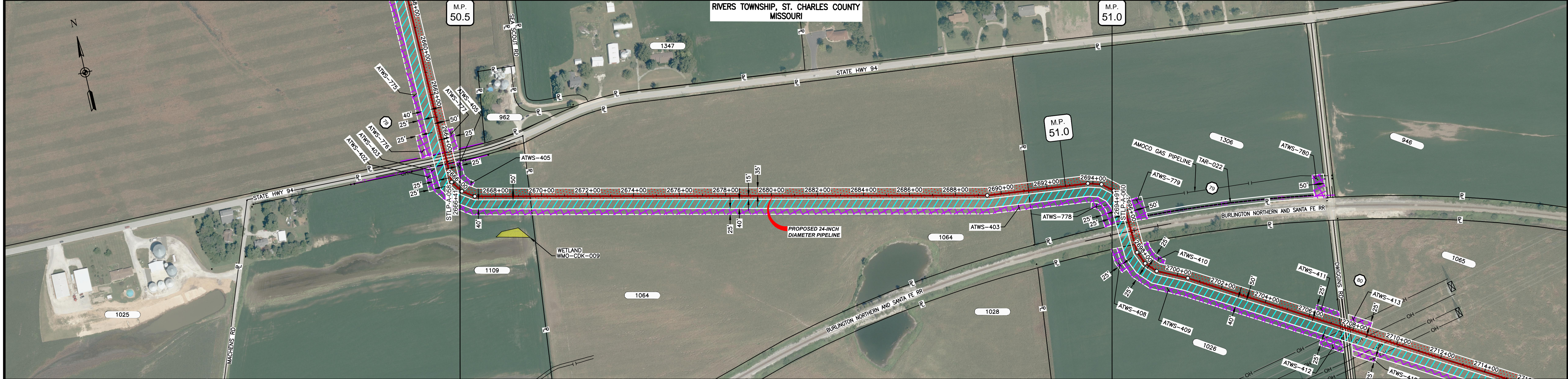
CLASS LOCATION/MAOP		CLASS I / 1440 PSIG	
MATERIAL & COATING			
DESIGN FACTOR		0.72	
CONSTRUCTION METHOD		OPEN CUT	BORE OPEN CUT
PIPELINE COVER		7 MIN.	
SOILS		66100	64016
LAND USE		AG	AG



- NOTES:
1. THE IMAGERY SHOWN WAS PROVIDED BY AERIAL DATA SERVICES, 2016. ADDITIONAL IMAGERY SUPPLEMENTED FROM USFWS-NWI AND USGS.
 2. EXISTING FEATURES SHOWN WERE SURVEYED BY MOTT MACDONALD AND DIGITIZED FROM IMAGERY. ALL LOCATIONS ARE APPROXIMATE AND SHALL BE VERIFIED BY CONTRACTOR.
 3. PROPERTY LINES DEPICTED ON THIS PLAN ARE BASED ON GIS TAX MAP DATA.
 4. ROAD CENTERLINES SHOWN ARE FROM PUBLICLY AVAILABLE DATA AND HAVE NOT BEEN SURVEYED.

MATERIAL		REFERENCE DRAWINGS		REVISIONS				APPROVALS		SCALE PLAN:		PREPARED FOR		SPIRE STL PIPELINE PROJECT	
TAG	QUANTITY	DESCRIPTION	DWG. NO.	TITLE	NO.	REVISIONS	DATE	DRAWN	CK	APPR	DRAWN BY	DATE	SCALE PLAN:	SCALE PROFILE H:	SCALE PROFILE V:
1	2519'	PIPE, 24.000" OD X 0.375" WT, API-5L, X70, DSAW, FBE COATED			1	ISSUE FOR FERC	01/2017	GH	EB	DGG	DP	03/2017	1" = 200'	1" = 200'	1" = 200'
2	80'	PIPE, 24.000" OD X 0.500" WT, API-5L, X70, DSAW, FBE/ARO COATED			2	AMENDMENT TO FERC	04/2017	KAM	RJP	DGG	CHECKED BY	DATE			
20	1	INDUCTION BEND, 24.000" OD X 0.500" WT, 5D, X70, FBE COATED			4	FERC SUPPLEMENTAL FILING	10/2017	DP	RJP	DGG	GH	03/2017			
											CLIENT APPROVAL	PREPARED BY	ALIGNMENT SHEET PROPOSED 24-INCH DIAMETER PIPELINE ST. CHARLES COUNTY, MISSOURI STA. 2640+06 TO STA. 2666+41		
											DATE		SCALE	DRAWING NO.	REVISION
											DATE		1" = 200'	STLP-A-058	4

OWNERSHIP / FOOTAGE	2666+41	1109	310'	2668+41	1084	2169'	2691+20	1306	371'	2694+91
STATIONING										



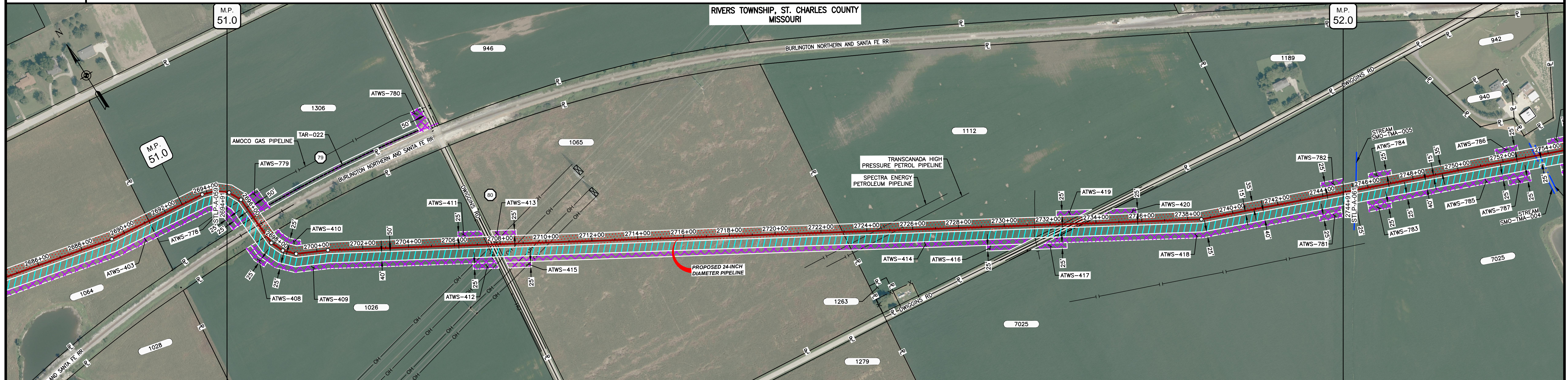
CLASS LOCATION/MAOP	CLASS I / 1440 PSIG	
MATERIAL & COATING	2666+41	2694+91
DESIGN FACTOR	0.72	
CONSTRUCTION METHOD	OPEN CUT	
PIPELINE COVER	7' MIN.	
SOILS	66019	
LAND USE	AG	



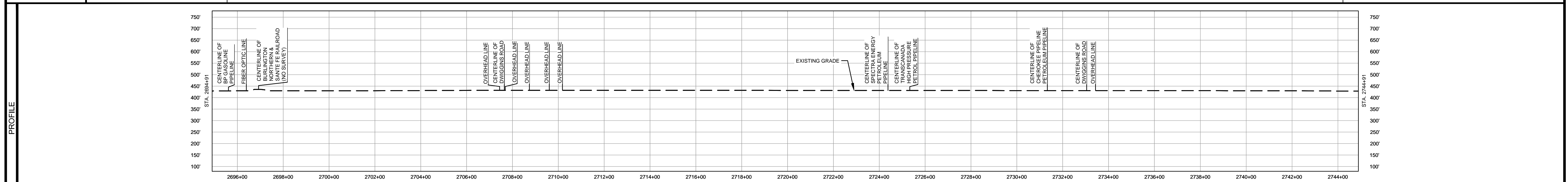
- NOTES:
1. THE IMAGERY SHOWN WAS PROVIDED BY AERIAL DATA SERVICES, 2016. ADDITIONAL IMAGERY SUPPLEMENTED FROM USFWS-NWI AND USGS.
 2. EXISTING FEATURES SHOWN WERE SURVEYED BY MOTT MACDONALD AND DIGITIZED FROM IMAGERY. ALL LOCATIONS ARE APPROXIMATE AND SHALL BE VERIFIED BY CONTRACTOR.
 3. PROPERTY LINES DEPICTED ON THIS PLAN ARE BASED ON GIS TAX MAP DATA.
 4. ROAD CENTERLINES SHOWN ARE FROM PUBLICLY AVAILABLE DATA AND HAVE NOT BEEN SURVEYED.

MATERIAL		REFERENCE DRAWINGS		REVISIONS				APPROVALS		SCALE PLAN: 1" = 200'		PREPARED FOR		SPIRE STL PIPELINE PROJECT	
TAG	QUANTITY	DESCRIPTION	DWG. NO.	TITLE	NO.	REVISIONS	DATE	DRAWN	CK	APPR	DRAWN BY	DATE		ALIGNMENT SHEET PROPOSED 24-INCH DIAMETER PIPELINE ST. CHARLES COUNTY, MISSOURI STA. 2666+41 TO STA. 2694+91	
1	2850'	PIPE, 24.000" OD X 0.375" WT, API-5L, X70, DSAW, FBE COATED	STLP-RR-002	SITE-SPECIFIC RAIL ROAD CROSSING DETAIL	1	ISSUE FOR FERC	01/2017	GH	EB	DGG	DP	03/2017			
					2	AMENDMENT TO FERC	04/2017	KAM	RJP	DGG	CHECKED BY	DATE		SCALE: 1" = 200' DRAWING NO. STLP-A-059 REVISION 4	
					4	FERC SUPPLEMENTAL FILING	10/2017	DP	RJP	DGG	DATE	DATE			
											ENG. APPROVAL	DATE			
											P.M. APPROVAL	DATE			
											JEW	04/2017			

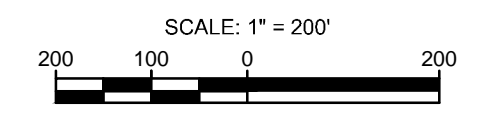
OWNERSHIP / FOOTAGE	1306 164 2694-455 100' 2697-455	1026 1012	1026 1529'	1112 1005'	7026 1190'
STATIONING	2694+91 2695+02.25(1) LT 2695+02.25(1) RT 2694-45 CENTERLINE OF BP GASOLINE PIPELINE 2694-41 FIBER OPTIC LINE 2694-45 PROPERTY LINE 2694-41 CENTERLINE OF BURLINGTON NORTHERN & SANTA FE RAILROAD (NO SURVEY) 2694-45 PROPERTY LINE 2694-40 20' (2) C/L 2694-40 20' (2) C/L 2694-40 20' (2) C/L 2694-40 20' (2) C/L 2694-40 20' (2) C/L 2694-40 20' (2) C/L 2694-40 20' (2) C/L	2701-45 OVERHEAD LINE 2701-45 EDGE OF PAVEMENT 2701-46 CENTERLINE OF DWIGGINS ROAD 2701-47 PROPERTY LINE 2701-70 OVERHEAD LINE 2701-70 EDGE OF PAVEMENT 2701-45 OVERHEAD LINE 2701-45 OVERHEAD LINE 2701-45 OVERHEAD LINE	2721-49 PROPERTY LINE 2724-90 CENTERLINE OF SPECTRA ENERGY PETROLEUM PIPELINE 2725-94 CENTERLINE OF TRANSCANADA HIGH PRESSURE PETROL. PIPELINE	2731-41 CENTERLINE OF CHEWEE PIPELINE 2731-41 CENTERLINE OF CHEWEE PIPELINE 2731-41 EDGE OF PAVEMENT 2731-41 PROPERTY LINE 2731-41 CENTERLINE OF DWIGGINS ROAD 2731-41 EDGE OF PAVEMENT 2731-41 OVERHEAD LINE	2744-91



CLASS LOCATION/MAOP	CLASS 1 / 1440 PSIG							
MATERIAL & COATING	2694+91	2694+40	2697+40	2707+25	2709+05	2732+46	2733+46	2744+91
DESIGN FACTOR	0.72	0.6	0.72	0.6	0.72	0.6	0.72	
CONSTRUCTION METHOD	OPEN CUT	BORE	OPEN CUT	BORE	OPEN CUT	BORE	OPEN CUT	
PIPELINE COVER	7 MIN.	10 MIN.			7 MIN.			
SOILS	66019						66059	
LAND USE	AG	F	D	OL	F	AG	D	AG



- NOTES:
1. THE IMAGERY SHOWN WAS PROVIDED BY AERIAL DATA SERVICES, 2016. ADDITIONAL IMAGERY SUPPLEMENTED FROM USFWS-NWI AND USGS.
 2. EXISTING FEATURES SHOWN WERE SURVEYED BY MOTT MACDONALD AND DIGITIZED FROM IMAGERY. ALL LOCATIONS ARE APPROXIMATE AND SHALL BE VERIFIED BY CONTRACTOR.
 3. PROPERTY LINES DEPICTED ON THIS PLAN ARE BASED ON GIS TAX MAP DATA.
 4. ROAD CENTERLINES SHOWN ARE FROM PUBLICLY AVAILABLE DATA AND HAVE NOT BEEN SURVEYED.



MATERIAL		REFERENCE DRAWINGS		REVISIONS				APPROVALS		SCALE PLAN:		PREPARED FOR		SPIRE STL PIPELINE PROJECT			
TAG	QUANTITY	DESCRIPTION	DWG. NO.	TITLE	NO.	REVISIONS	DATE	DRAWN	CK	APPR	DRAWN BY	DATE	SCALE PLAN:	SCALE PROFILE H:	SCALE PROFILE V:		
1	4730'	PIPE, 24.000" OD X 0.375" WT, API-5L, X70, DSAW, FBE COATED	STLP-RR-002	SITE-SPECIFIC RAILROAD CROSSING DETAIL	1	ISSUE FOR FERC	01/2017	GH	EB	DGG	DP	03/2017	1" = 200'	1" = 200'	1" = 200'		
2	270'	PIPE, 24.000" OD X 0.500" WT, API-5L, X70, DSAW, FBE/ARO COATED			2	AMENDMENT TO FERC	04/2017	KAM	RJP	DGG	CHECKED BY	DATE					
					4	FERC SUPPLEMENTAL FILING	10/2017	DP	RJP	DGG	GH	03/2017					
											ENG. APPROVAL	DATE	CLIENT APPROVAL	PREPARED BY	SPIRE STL PIPELINE PROJECT		
											DGG	04/2017		M M MOTT MACDONALD	ALIGNMENT SHEET		
											P.M. APPROVAL	DATE			PROPOSED 24-INCH DIAMETER PIPELINE		
											JEV	04/2017			ST. CHARLES COUNTY, MISSOURI		
															STA. 2694+91 TO STA. 2744+91		
															SCALE	DRAWING NO.	REVISION
															1" = 200'	STLP-A-060	4