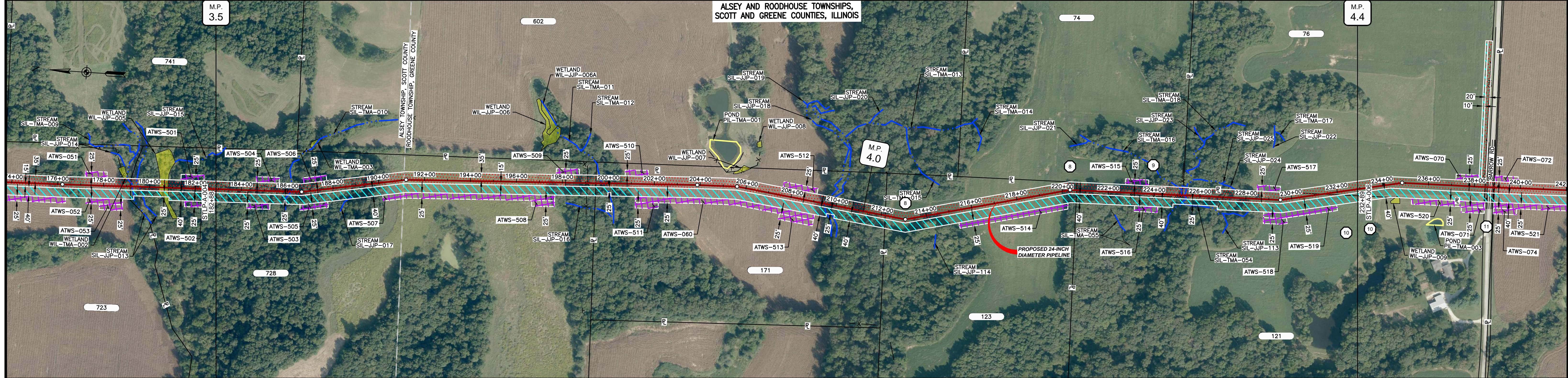
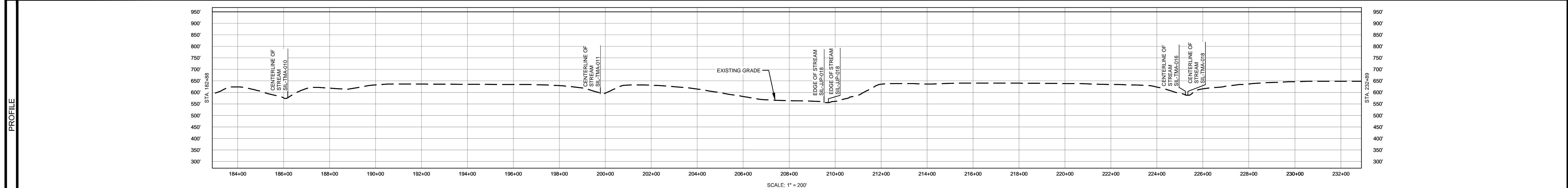


OWNERSHIP / FOOTAGE	182+88	1656	189+44	1272	212+18	847	220+88	1075	231+37	232+89
STATIONING	186+17 CENTERLINE OF STREAM SIL-TMA-010 186+82 PROPERTY LINE	19+09 COUNTY LINE 19+09 MUNICIPAL BOUNDARY 19+19 TOWNSHIP BOUNDARY	19+09 EXISTING FENCE 19+04 PROPERTY LINE 19+78 CENTERLINE OF STREAM SIL-TMA-011	20+03 EXISTING FENCE 20+03 EXISTING FENCE	20+05 EDGE OF STREAM SIL-JP-018 20+70 EDGE OF STREAM SIL-JP-018	21+18 PROPERTY LINE 23+06 PROPERTY LINE	22+03 EXISTING FENCE 22+03 PROPERTY LINE	22+24 CENTERLINE OF STREAM SIL-TMA-018 22+04 EXISTING FENCE 22+35 CENTERLINE OF STREAM SIL-TMA-018	22+42 CENTERLINE OF DITCH	23+14 PROPERTY LINE

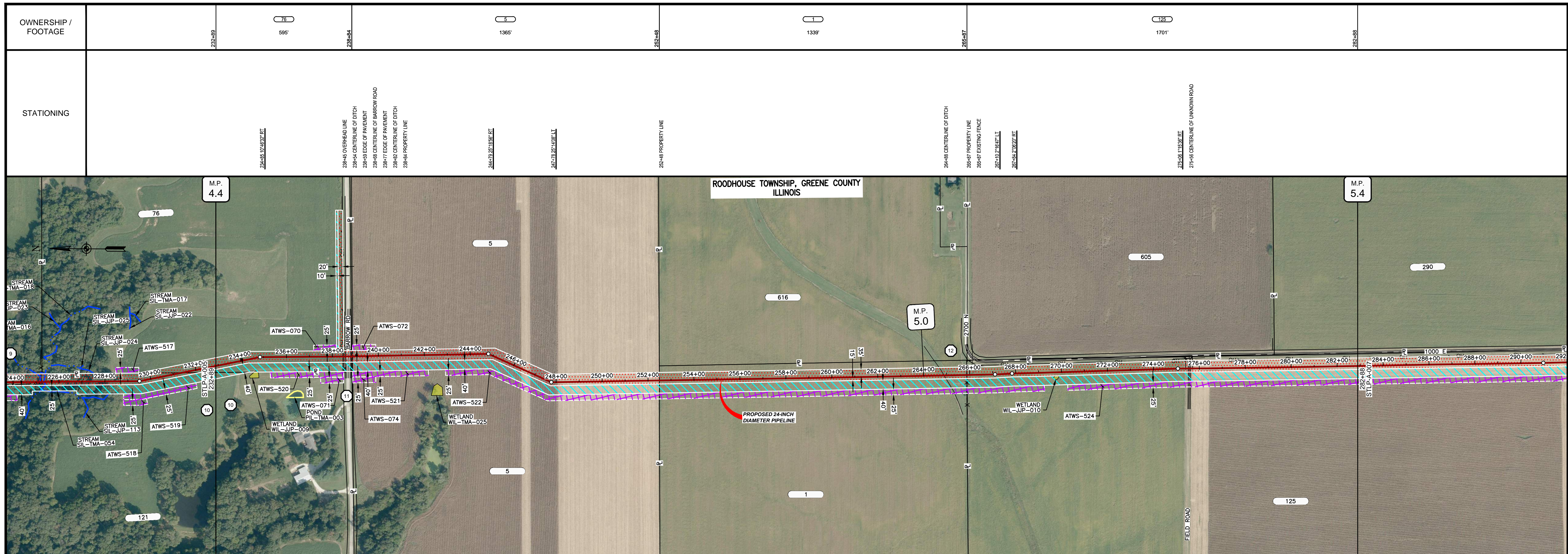


CLASS LOCATION/MAOP	CLASS 1 / 1440 PSIG																				
MATERIAL & COATING	500' (1)																				
DESIGN FACTOR	0.72																				
CONSTRUCTION METHOD	OPEN CUT	OPEN CUT (FLUMED)	OPEN CUT	OPEN CUT (FLUMED)	OPEN CUT	OPEN CUT (FLUMED)	OPEN CUT	OPEN CUT (FLUMED)	OPEN CUT	OPEN CUT (FLUMED)											
PIPELINE COVER	5' MIN.																				
SOILS	8F	8F	279D2	279B	279D2	279B	279D2	8F	279D2	279B	8F2	242A	3451A	8F	280B	279B	279D2	8F	279D2	279B	
LAND USE	F	F	OL	OL	F	AG	F	OW	F	AG	F	OL	AG	OL	AG	OL	AG	OL	AG	OL	AG

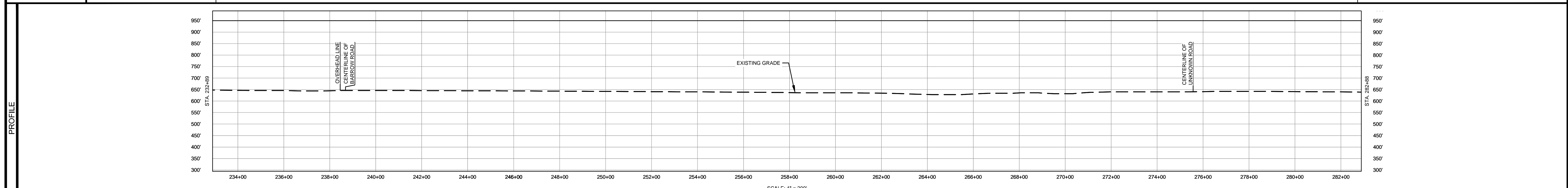


- NOTES:
1. THE IMAGERY SHOWN WAS PROVIDED BY AERIAL DATA SERVICES, 2016. ADDITIONAL IMAGERY SUPPLEMENTED FROM USFWS-NWI AND USGS.
 2. EXISTING FEATURES SHOWN WERE SURVEYED BY MOTT MACDONALD AND DIGITIZED FROM IMAGERY. ALL LOCATIONS ARE APPROXIMATE AND SHALL BE VERIFIED BY CONTRACTOR.
 3. PROPERTY LINES DEPICTED ON THIS PLAN ARE BASED ON GIS TAX MAP DATA.
 4. ROAD CENTERLINES SHOWN ARE FROM PUBLICLY AVAILABLE DATA AND HAVE NOT BEEN SURVEYED.

MATERIAL			REFERENCE DRAWINGS			REVISIONS				APPROVALS				PREPARED FOR		SPIRE STL PIPELINE PROJECT			
TAG	QUANTITY	DESCRIPTION	DWG. NO.	TITLE	NO.	REVISIONS	DATE	DRAWN	CK	APPR	DRAWN BY	DATE	SCALE PLAN:	SCALE PROFILE H:	SCALE PROFILE V:		PROPOSED 24-INCH DIAMETER PIPELINE SCOTT AND GREENE COUNTIES, ILLINOIS STA. 182+88 TO STA. 232+89		
1	500'	PIPE, 24.000" OD X 0.375" WT, API-5L, X70, DSAW, FBE COATED			1	ISSUE FOR FERC	1/2017	GH	EB	DGG	DP	03/2017	1" = 200'	1" = 200'	1" = 200'				
					2	AMENDMENT TO FERC	04/2017	DP	SG	DGG	RJP	03/2017							
					4	FERC SUPPLEMENTAL FILING	10/2017	DP	RJP	DGG									
											ENG. APPROVAL	DATE	CLIENT APPROVAL	DATE					
											D.G.G.	04/2017							
											P.M. APPROVAL	DATE							
											J.E.W.	04/2017							



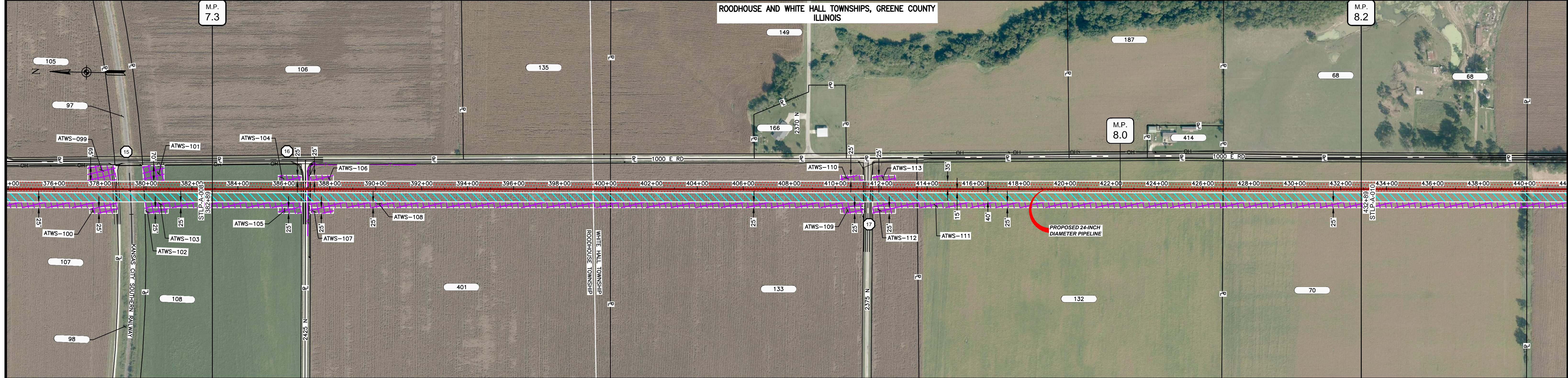
CLASS LOCATION/MAOP	CLASS 1 / 1440 PSIG																										
MATERIAL & COATING	<table border="1"> <tr> <td>232+89</td> <td>238+27</td> <td>238+07</td> <td>282+88</td> </tr> <tr> <td>538'</td> <td>80'</td> <td></td> <td>4382'</td> </tr> <tr> <td>1</td> <td>2</td> <td></td> <td>1</td> </tr> </table>															232+89	238+27	238+07	282+88	538'	80'		4382'	1	2		1
232+89	238+27	238+07	282+88																								
538'	80'		4382'																								
1	2		1																								
DESIGN FACTOR	0.72		0.6		0.72																						
CONSTRUCTION METHOD	OPEN CUT		BORE		OPEN CUT																						
PIPELINE COVER	5' MIN.																										
SOILS	279B	279D2	OL	D	OL	279B	51A	68A	51A	675B	675C2	675B	675C2	3451A	675C2	61A	675C2	279B	61A	51A							
LAND USE	AG				OL	D	OL	AG	AG																		



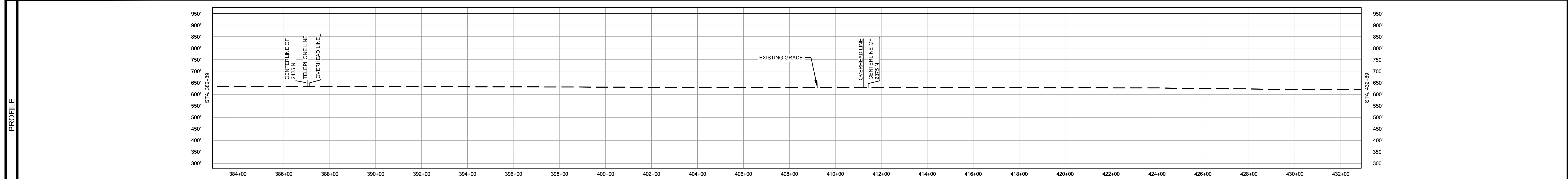
- NOTES:
1. THE IMAGERY SHOWN WAS PROVIDED BY AERIAL DATA SERVICES, 2016. ADDITIONAL IMAGERY SUPPLEMENTED FROM USFWS-NWI AND USGS.
 2. EXISTING FEATURES SHOWN WERE SURVEYED BY MOTT MACDONALD AND DIGITIZED FROM IMAGERY. ALL LOCATIONS ARE APPROXIMATE AND SHALL BE VERIFIED BY CONTRACTOR.
 3. PROPERTY LINES DEPICTED ON THIS PLAN ARE BASED ON GIS TAX MAP DATA.
 4. ROAD CENTERLINES SHOWN ARE FROM PUBLICLY AVAILABLE DATA AND HAVE NOT BEEN SURVEYED.

MATERIAL			REFERENCE DRAWINGS		REVISIONS					APPROVALS			SCALE PLAN		PREPARED FOR		SPIRE STL PIPELINE PROJECT			
TAG	QUANTITY	DESCRIPTION	DWG. NO.	TITLE	NO.	REVISIONS	DATE	DRAWN	CK	APPR	DRAWN BY	DATE	SCALE PLAN	SCALE PROFILE H	SCALE PROFILE V	Spire STL Pipeline		ALIGNMENT SHEET PROPOSED 24-INCH DIAMETER PIPELINE GREENE COUNTY, ILLINOIS STA. 232+89 TO STA. 282+88		
1	4920'	PIPE, 24.000" OD X 0.375" WT, API-5L, X70, DSAW, FBE COATED			1	ISSUE FOR FERC	1/2017	GH	EB	DGG	DP	04/2017	1" = 200'	1" = 200'	1" = 200'	PREPARED BY		MOTT MACDONALD		
2	80'	PIPE, 24.000" OD X 0.500" WT, API-5L, X70, DSAW, FBE/ARO COATED			2	AMMENDMENT TO FERC	04/2017	DP	SG	DGG	SG	04/2017	CLIENT APPROVAL			PREPARED BY		MOTT MACDONALD		
					4	FERC SUPPLEMENTAL FILING	10/2017	DP	RJP	DGG	ENG. APPROVAL	DATE	DGG	04/2014	DATE	SCALE		DRAWING NO.		REVISION
											P.M. APPROVAL	DATE	1" = 200'	STLPA-006						4
											JEW	04/2017								

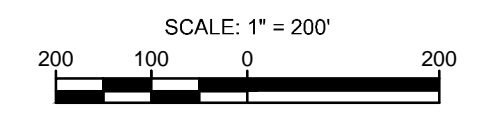
OWNERSHIP / FOOTAGE	382+89	108	405'	386+94	491	1328'	400+22	133	1334'	413+66	132	1331'	426+87	70	602'	432+89
STATIONING	386+84 CENTERLINE OF DITCH 386+87 EDGE OF PAVEMENT 386+94 PROPERTY LINE 386+96 CENTERLINE OF 24.5" N 387+04 TELEPHONE LINE 387+04 EDGE OF PAVEMENT 387+07 CENTERLINE OF DITCH 387+13 OVERHEAD LINE 386+46 MUNICIPAL BOUNDARY 400+22 PROPERTY LINE 411+01 OVERHEAD LINE 411+02 CENTERLINE OF DITCH 411+04 EDGE OF PAVEMENT 411+42 CENTERLINE OF 237.5" N 411+51 EDGE OF PAVEMENT 411+58 CENTERLINE OF DITCH 413+66 PROPERTY LINE 426+87 PROPERTY LINE															



CLASS LOCATION/MAOP	CLASS 1 / 1440 PSIG															
MATERIAL & COATING	382+89		386+67		387+87		401		411+02		411+82		432+89			
DESIGN FACTOR	0.72		0.6		0.72				0.6		0.72					
CONSTRUCTION METHOD	OPEN CUT		BORE		OPEN CUT				BORE		OPEN CUT					
PIPELINE COVER	5' MIN.															
SOILS	68A		47A		51A		47A		51A		47A		51A		675B	
LAND USE	AG		D		AG				D		AG					

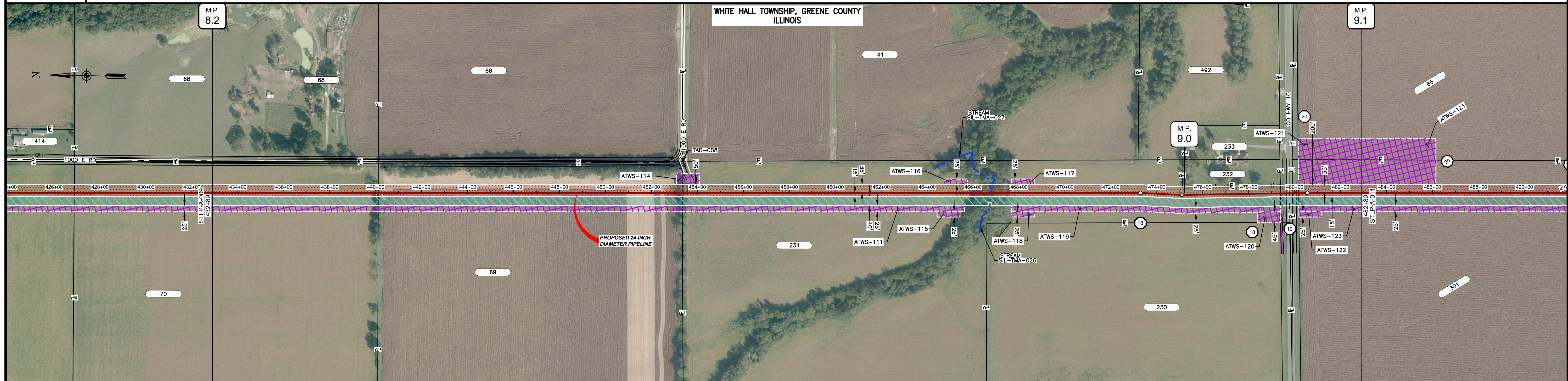


- NOTES:
1. THE IMAGERY SHOWN WAS PROVIDED BY AERIAL DATA SERVICES, 2016. ADDITIONAL IMAGERY SUPPLEMENTED FROM USFWS-NWI AND USGS.
 2. EXISTING FEATURES SHOWN WERE SURVEYED BY MOTT MACDONALD AND DIGITIZED FROM IMAGERY. ALL LOCATIONS ARE APPROXIMATE AND SHALL BE VERIFIED BY CONTRACTOR.
 3. PROPERTY LINES DEPICTED ON THIS PLAN ARE BASED ON GIS TAX MAP DATA.
 4. ROAD CENTERLINES SHOWN ARE FROM PUBLICLY AVAILABLE DATA AND HAVE NOT BEEN SURVEYED.

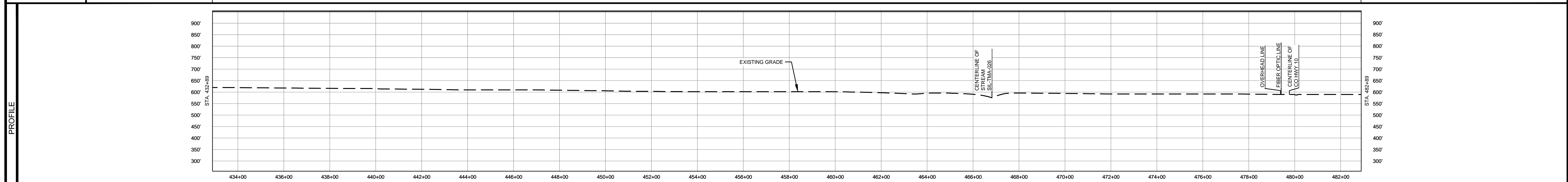


MATERIAL			REFERENCE DRAWINGS		REVISIONS				APPROVALS			PREPARED FOR		SPIRE STL PIPELINE PROJECT			
TAG	QUANTITY	DESCRIPTION	DWG. NO.	TITLE	NO.	REVISIONS	DATE	DRAWN	CK	APPR	DRAWN BY	DATE	SCALE PLAN: 1" = 200'		ALIGNMENT SHEET PROPOSED 24-INCH DIAMETER PIPELINE GREENE COUNTY, ILLINOIS STA. 382+89 TO STA. 432+89		
1	4840'	PIPE, 24.000" OD X 0.375" WT, API-5L, X70, DSAW, FBE COATED			1	ISSUE FOR FERC	1/2017	GH	EB	DGG	DP	04/2017	SCALE PROFILE H: 1" = 200'				
2	160'	PIPE, 24.000" OD X 0.500" WT, API-5L, X70, DSAW, FBE/ARO COATED			2	AMMENDMENT TO FERC	04/2017	DP	SG	DGG			SCALE PROFILE V: 1" = 200'	CLIENT APPROVAL PREPARED BY DATE			
					4	FERC SUPPLEMENTAL FILING	10/2017	DP	RJP	DGG			SCALE				DRAWING NO.
											ENG. APPROVAL	DATE	1" = 200'	STLP-A-009	4		
											P.M. APPROVAL	DATE					
											JEW	04/2017					

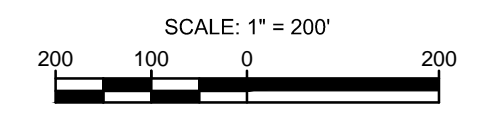
OWNERSHIP / FOOTAGE	432+89	721'	440+10	1324'	453+34	2604'	479+38	299'	482+89
STATIONING	<p>440+10 PROPERTY LINE</p> <p>453+34 PROPERTY LINE</p> <p>466+42 CENTERLINE OF STREAM SIL-TMA-028</p> <p>472+02 2.5356' LT.</p> <p>475+02 3.5221' LT.</p> <p>476+56 WELL 47' LT.</p> <p>477+75 WELL 38' LT.</p> <p>479+38 OVERHEAD LINE</p> <p>479+38 PROPERTY LINE</p> <p>479+40 FIBER OPTIC LINE</p> <p>479+49 CENTERLINE OF DITCH</p> <p>479+64 EDGE OF PAVEMENT</p> <p>479+76 CENTERLINE OF CO HWY 10</p> <p>479+90 PROPERTY LINE</p> <p>480+07 CENTERLINE OF DITCH</p> <p>480+55 3.5221' RT.</p>								



CLASS LOCATION/MAOP	CLASS I / 1440 PSIG																	
MATERIAL & COATING	432+89									479+37	480+17	482+89						
DESIGN FACTOR	0.72								0.8	0.72								
CONSTRUCTION METHOD	OPEN CUT								OPEN CUT (FLUMED)	OPEN CUT	BORE	OPEN CUT						
PIPELINE COVER	5' MIN.																	
SOILS	675B	51A	675B	279B	675B	279C2	675B	279C2	279D2	279C2	279D2	279B	17A	279C2	51A	47A	51A	
LAND USE		AG		F		AG			F		AG			AG	OL	D	OL	AG



NOTES:
 1. THE IMAGERY SHOWN WAS PROVIDED BY AERIAL DATA SERVICES, 2016. ADDITIONAL IMAGERY SUPPLEMENTED FROM USFWS-NWI AND USGS.
 2. EXISTING FEATURES SHOWN WERE SURVEYED BY MOTT MACDONALD AND DIGITIZED FROM IMAGERY. ALL LOCATIONS ARE APPROXIMATE AND SHALL BE VERIFIED BY CONTRACTOR.



MATERIAL			REFERENCE DRAWINGS		REVISIONS				APPROVALS			PREPARED FOR		SPIRE STL PIPELINE PROJECT		
TAG	QUANTITY	DESCRIPTION	DWG. NO.	TITLE	NO.	REVISIONS	DATE	DRAWN	CK	APPR	DRAWN BY	DATE	SCALE PLAN: 1" = 200'	ALIGNMENT SHEET		
1	4920'	PIPE, 24.000" OD X 0.375" WT, API-5L, X70, DSAW, FBE COATED			1	ISSUE FOR FERC	1/2017	GH	EB	DGG	DP	04/2017	SCALE PROFILE H: 1" = 200'	PROPOSED 24-INCH DIAMETER PIPELINE		
2	80'	PIPE, 24.000" OD X 0.500" WT, API-5L, X70, DSAW, FBE/ARO COATED			2	AMENDMENT TO FERC	04/2017	DP	SG	DGG	SG	04/2017	SCALE PROFILE V: 1" = 200'	GREENE COUNTY, ILLINOIS		
					4	FERC SUPPLEMENTAL FILING	10/2017	DP	RJP	DGG	SG	04/2017	CLIENT APPROVAL	STA. 432+89 TO STA. 482+89		
											ENG. APPROVAL	DATE	DATE	SCALE	DRAWING NO.	REVISION
											DGG	04/2017	DATE	1" = 200'	STLP-A-010	4
											P.M. APPROVAL	DATE	DATE			
											JEV	04/2017	DATE			

PREPARED BY: **M M**
MOTT MACDONALD