

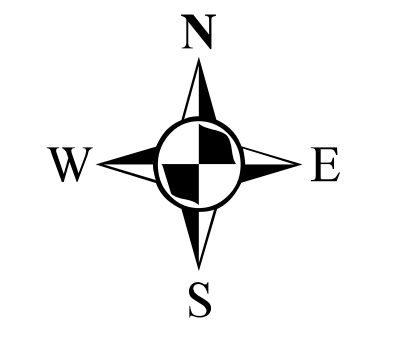


SEE PAGE 2

- ① MILE POST
- PROPOSED M&R SITE
- PROPOSED MAINLINE VALVE SITE
- PROPOSED 24-INCH DIAMETER PIPELINE
- LINE 880 20-INCH DIAMETER RELOCATION
- EXISTING LINE 880 20-INCH DIAMETER PIPELINE
- PROPOSED ACCESS ROAD
- NWI WETLAND
- PROPOSED CONTRACTOR YARD/STAGING AREA
- TOWNSHIP BOUNDARY
- COUNTY BOUNDARY
- STATE BOUNDARY
- USGS QUADRANGLE BOUNDARY

SPIRE STL PIPELINE NWI TOPOGRAPHIC MAP

ALSEY PRECINCT, SCOTT COUNTY AND ROODHOUSE TOWNSHIP,
GREENE COUNTY, ILLINOIS



ABSOLUTE SCALE:
1:24,000

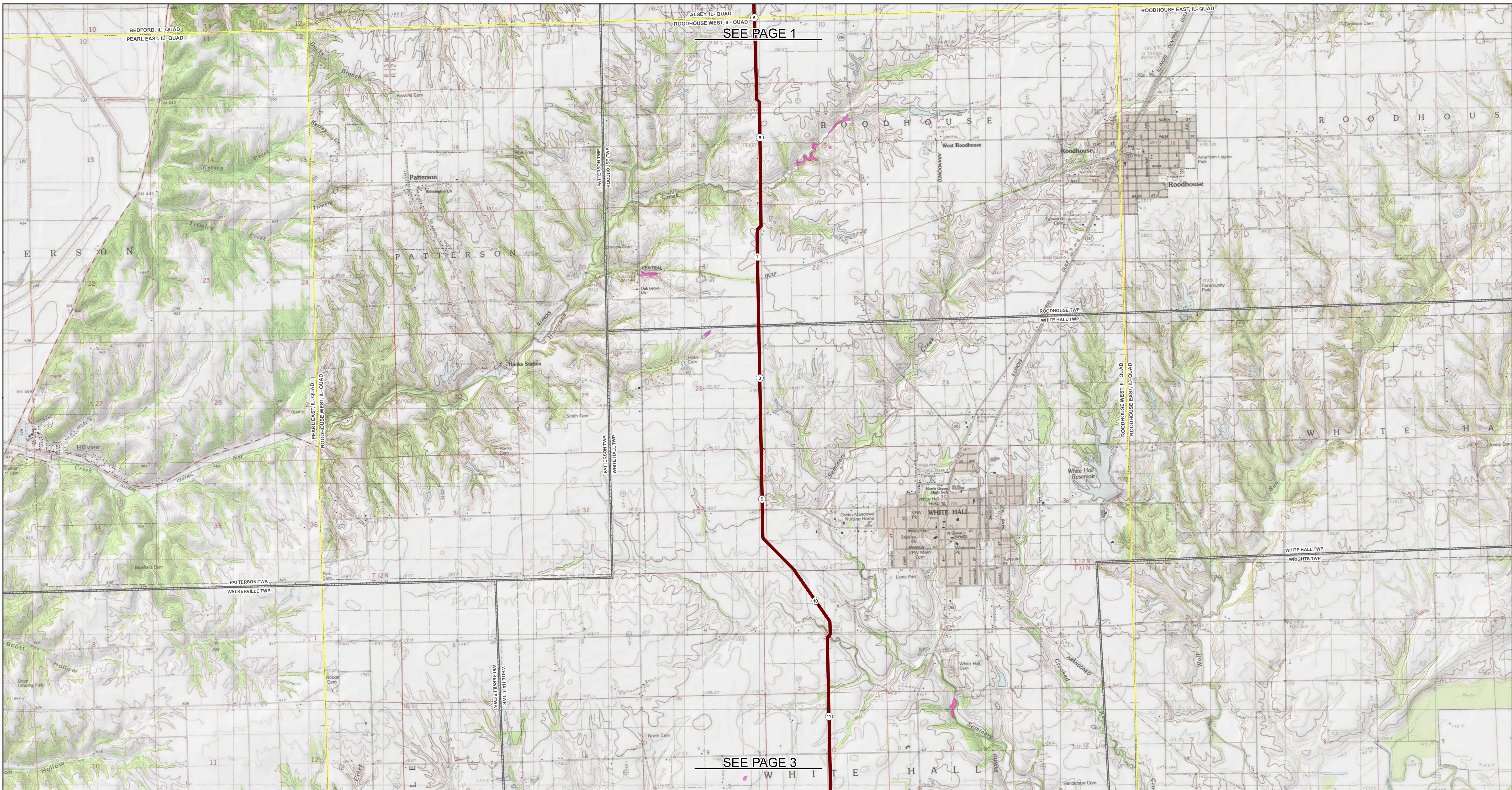
REFERENCE SCALE:
1 IN = 2,000 FEET

PREPARED FOR
Spire STL Pipeline

PREPARED BY
M M MOTT MACDONALD

DRAWN BY:	EAP 12/16/2016
CHECKED BY:	KPW 12/16/2016
ENG. APPROVAL:	DG 12/19/2016
APPROVED BY:	JW 12/19/2016
REV. DATE:	01/2017
REVISION:	2
DESC:	ISSUE FOR FERC
PAGE:	STLP-NWI-001

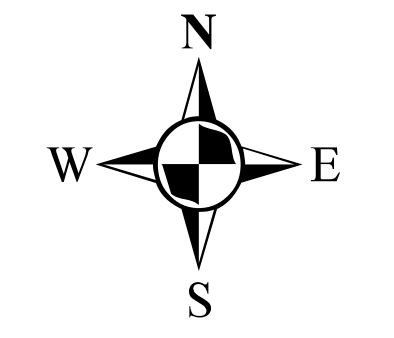
MAPS COMPILED UTILIZING ESRI TOPOGRAPHIC BASEMAP.
WETLAND DATA SOURCED FROM U.S. FISH AND WILDLIFE SERVICE NATIONAL WETLAND INVENTORY (NWI) DATASET.



- ① MILE POST
- PROPOSED M&R SITE
- PROPOSED MAINLINE VALVE SITE
- PROPOSED 24-INCH DIAMETER PIPELINE
- LINE 880 20-INCH DIAMETER RELOCATION
- EXISTING LINE 880 20-INCH DIAMETER PIPELINE
- PROPOSED ACCESS ROAD
- NWI WETLAND
- PROPOSED CONTRACTOR YARD/STAGING AREA
- TOWNSHIP BOUNDARY
- COUNTY BOUNDARY
- STATE BOUNDARY
- USGS QUADRANGLE BOUNDARY

SPIRE STL PIPELINE NWI TOPOGRAPHIC MAP

ROODHOUSE & WHITE HALL TOWNSHIPS, GREENE COUNTY, ILLINOIS



ABSOLUTE SCALE:
1:24,000

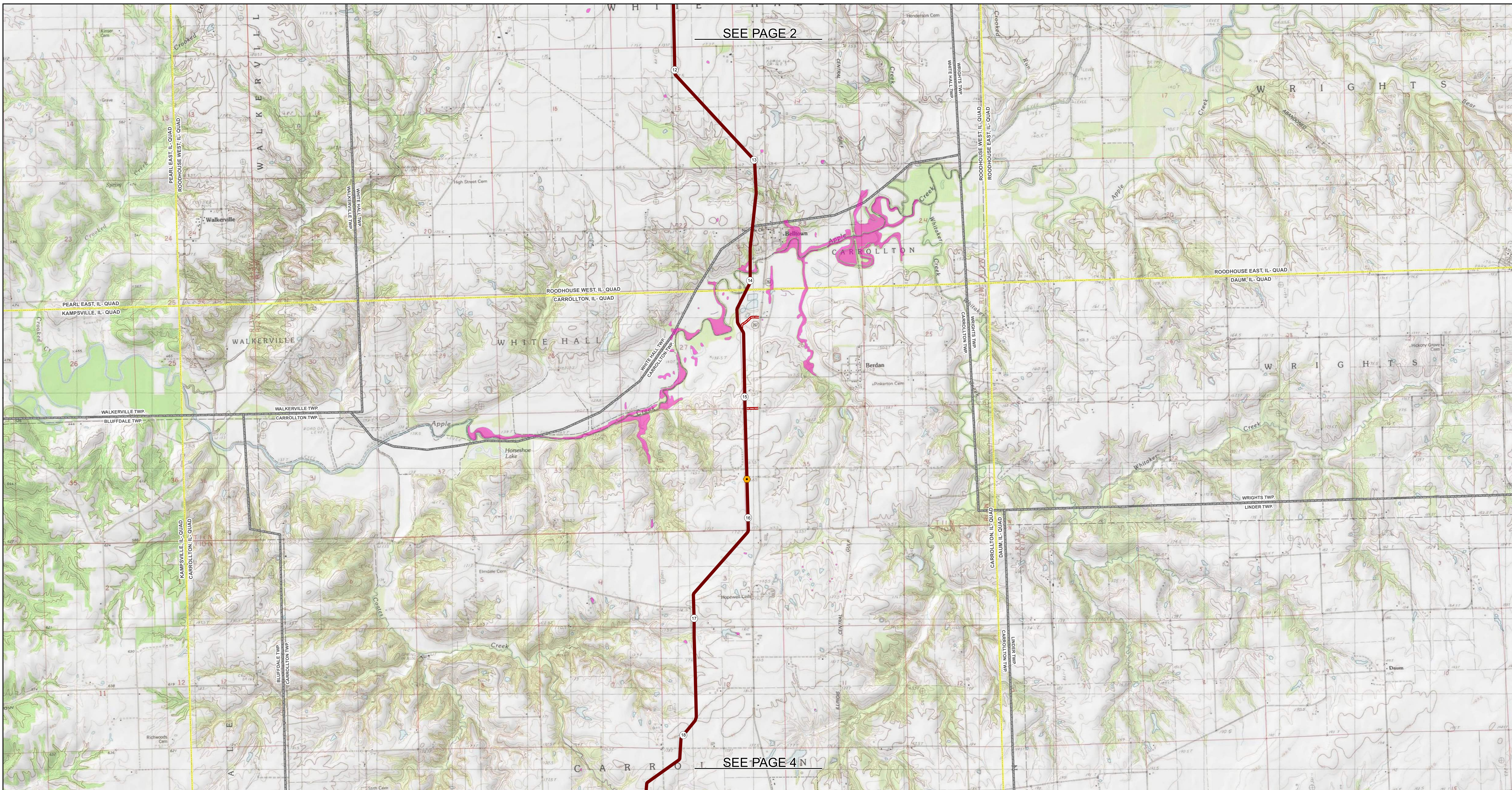
REFERENCE SCALE:
1 IN = 2,000 FEET

PREPARED FOR
Spire STL Pipeline

PREPARED BY
M M
MOTT MACDONALD

DRAWN BY:	EAP 12/16/2016
CHECKED BY:	KPW 12/16/2016
ENG. APPROVAL:	DG 12/19/2016
APPROVED BY:	JW 12/19/2016
REV. DATE:	01/2017
REVISION:	2
DESC:	ISSUE FOR FERC
PAGE:	STLP-NWI-002

MAPS COMPILED UTILIZING ESRI TOPOGRAPHIC BASEMAP.
WETLAND DATA SOURCED FROM U.S. FISH AND WILDLIFE SERVICE NATIONAL WETLAND INVENTORY (NWI) DATASET.



SEE PAGE 2

SEE PAGE 4 N

- ① MILE POST
- PROPOSED M&R SITE
- PROPOSED MAINLINE VALVE SITE
- PROPOSED 24-INCH DIAMETER PIPELINE
- LINE 880 20-INCH DIAMETER RELOCATION
- EXISTING LINE 880 20-INCH DIAMETER PIPELINE
- PROPOSED ACCESS ROAD
- NWI WETLAND
- PROPOSED CONTRACTOR YARD/STAGING AREA
- TOWNSHIP BOUNDARY
- COUNTY BOUNDARY
- STATE BOUNDARY
- USGS QUADRANGLE BOUNDARY

SPIRE STL PIPELINE NWI TOPOGRAPHIC MAP

WHITE HALL & CARROLLTON TOWNSHIPS, GREENE COUNTY,
ILLINOIS



ABSOLUTE SCALE:
1:24,000

REFERENCE SCALE:
1 IN = 2,000 FEET

PREPARED FOR

Spire STL Pipeline

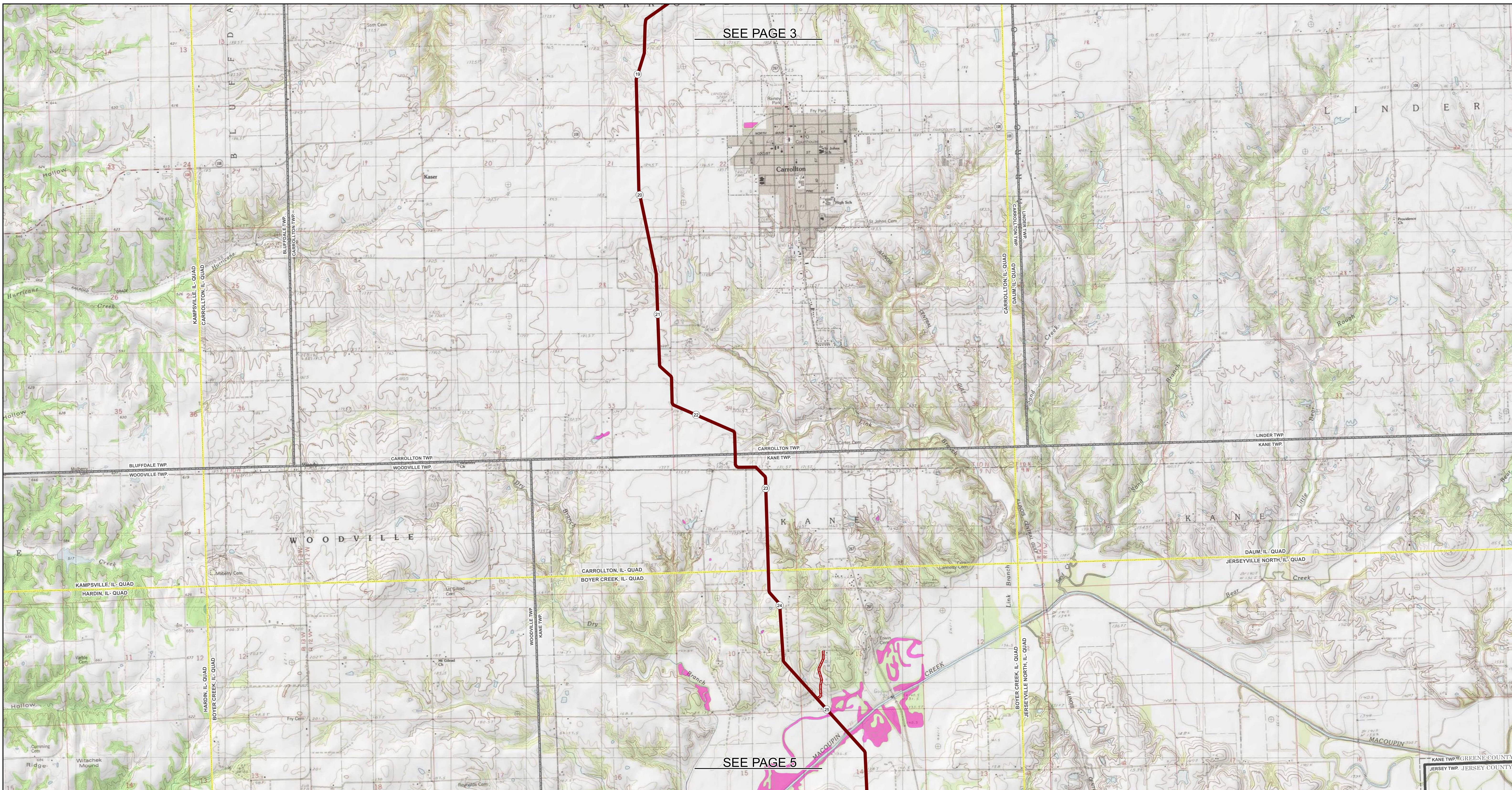
PREPARED BY

M M

**MOTT
MACDONALD**

DRAWN BY:	EAP 12/16/2016
CHECKED BY:	KPW 12/16/2016
ENG. APPROVAL:	DG 12/19/2016
APPROVED BY:	JW 12/19/2016
REV. DATE:	01/2017
REVISION:	2
DESC:	ISSUE FOR FERC
PAGE:	STLP-NWI-003

MAPS COMPILED UTILIZING ESRI TOPOGRAPHIC BASEMAP.
WETLAND DATA SOURCED FROM U.S. FISH AND WILDLIFE SERVICE NATIONAL WETLAND INVENTORY (NWI) DATASET.



	MILE POST		EXISTING LINE 880 20-INCH DIAMETER PIPELINE		TOWNSHIP BOUNDARY
	PROPOSED M&R SITE		PROPOSED ACCESS ROAD		COUNTY BOUNDARY
	PROPOSED MAINLINE VALVE SITE		NWI WETLAND		STATE BOUNDARY
	PROPOSED 24-INCH DIAMETER PIPELINE		PROPOSED CONTRACTOR YARD/STAGING AREA		USGS QUADRANGLE BOUNDARY
	LINE 880 20-INCH DIAMETER RELOCATION				

SPIRE STL PIPELINE NWI TOPOGRAPHIC MAP

CARROLLTON & KANE TOWNSHIPS, GREENE COUNTY, ILLINOIS



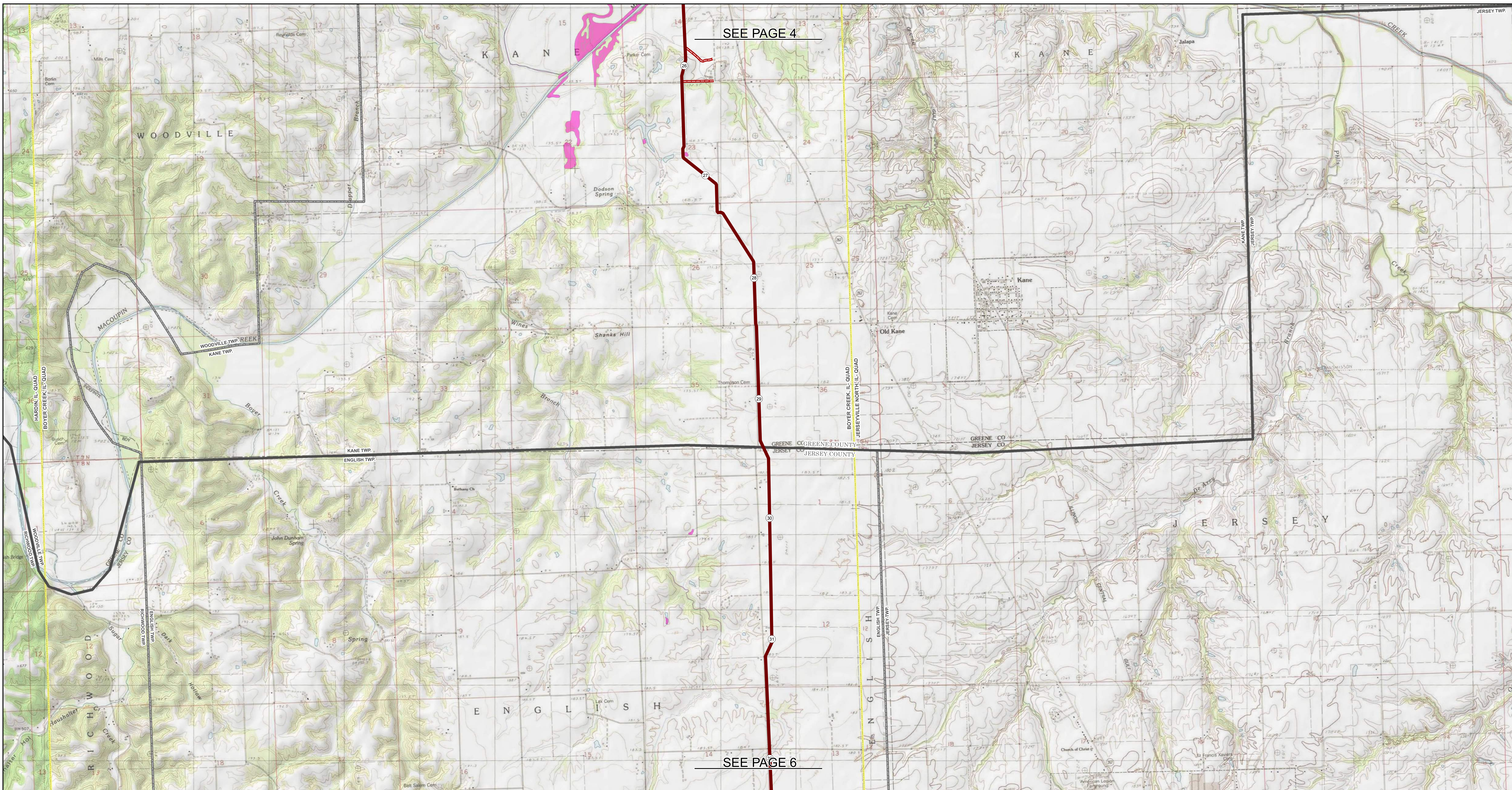
ABSOLUTE SCALE:
1:24,000

 REFERENCE SCALE:
1 IN = 2,000 FEET

PREPARED FOR
Spire STL Pipeline
 PREPARED BY
M M
MOTT MACDONALD

DRAWN BY:	EAP 12/16/2016
CHECKED BY:	KPW 12/16/2016
ENG. APPROVAL:	DG 12/19/2016
APPROVED BY:	JW 12/19/2016
REV. DATE:	01/2017
REVISION:	2
DESC:	ISSUE FOR FERC
PAGE:	STLP-NWI-004

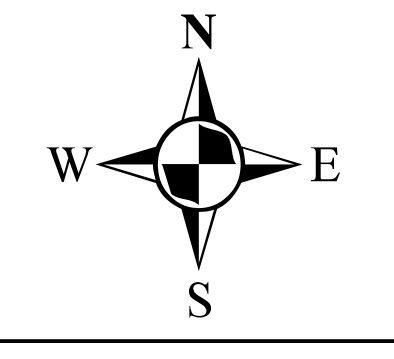
MAPS COMPILED UTILIZING ESRI TOPOGRAPHIC BASEMAP.
WETLAND DATA SOURCED FROM U.S. FISH AND WILDLIFE SERVICE NATIONAL WETLAND INVENTORY (NWI) DATASET.



- ① MILE POST
- PROPOSED M&R SITE
- PROPOSED MAINLINE VALVE SITE
- PROPOSED 24-INCH DIAMETER PIPELINE
- LINE 880 20-INCH DIAMETER RELOCATION
- EXISTING LINE 880 20-INCH DIAMETER PIPELINE
- PROPOSED ACCESS ROAD
- NWI WETLAND
- PROPOSED CONTRACTOR YARD/STAGING AREA
- TOWNSHIP BOUNDARY
- COUNTY BOUNDARY
- STATE BOUNDARY
- USGS QUADRANGLE BOUNDARY

SPIRE STL PIPELINE NWI TOPOGRAPHIC MAP

KANE TOWNSHIP, GREENE COUNTY AND ENGLISH TOWNSHIP, JERSEY COUNTY, ILLINOIS



ABSOLUTE SCALE:
1:24,000

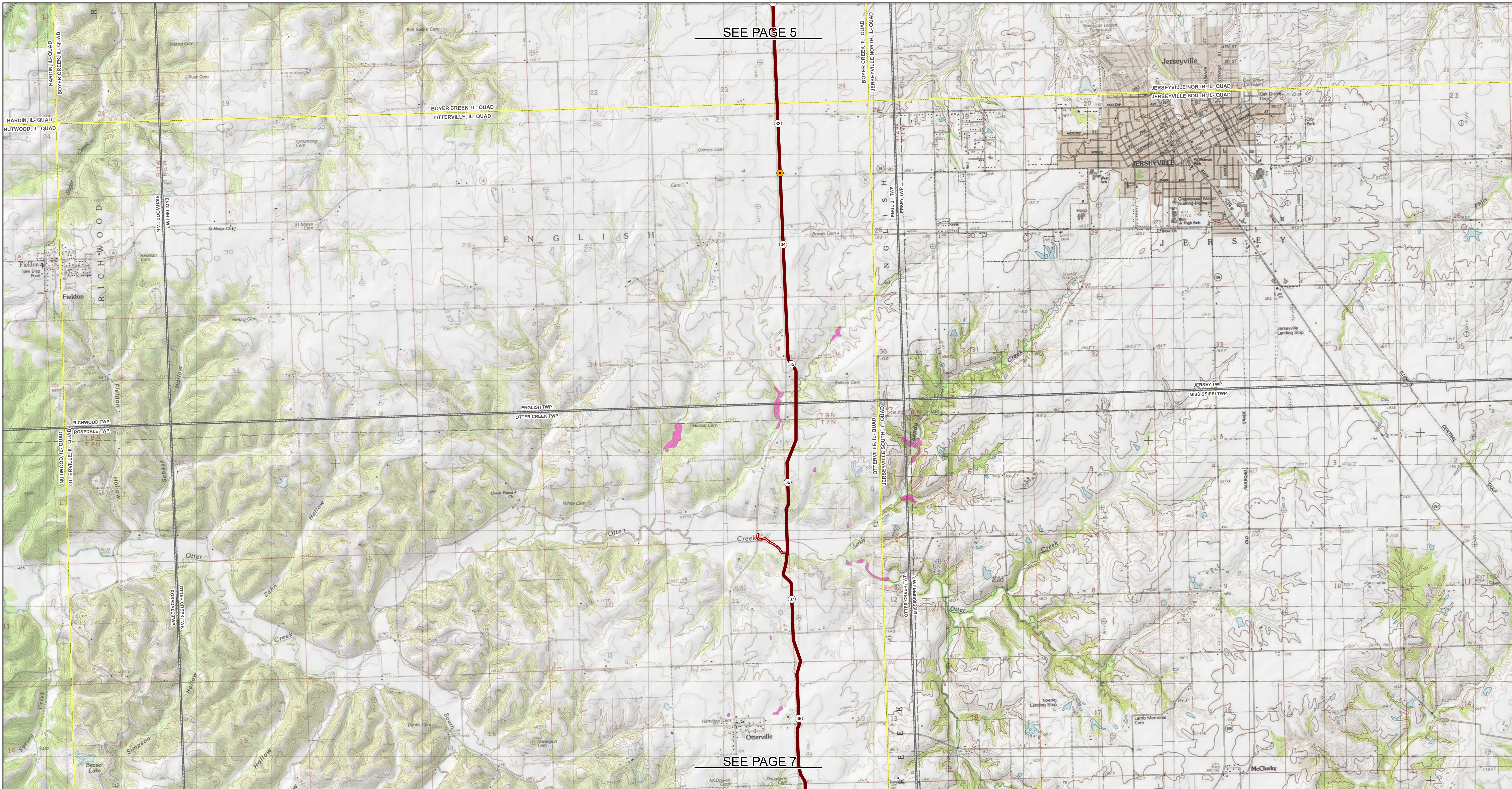
REFERENCE SCALE:
1 IN = 2,000 FEET

PREPARED FOR
Spire STL Pipeline

PREPARED BY
M M
MOTT MACDONALD

DRAWN BY:	EAP 12/16/2016
CHECKED BY:	KPW 12/16/2016
ENG. APPROVAL:	DG 12/19/2016
APPROVED BY:	JW 12/19/2016
REV. DATE:	01/2017
REVISION:	2
DESC:	ISSUE FOR FERC
PAGE:	STLP-NWI-005

MAPS COMPILED UTILIZING ESRI TOPOGRAPHIC BASEMAP.
WETLAND DATA SOURCED FROM U.S. FISH AND WILDLIFE SERVICE NATIONAL WETLAND INVENTORY (NWI) DATASET.



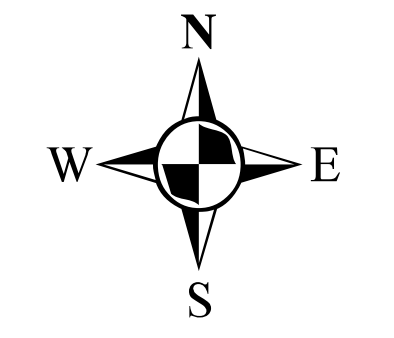
SEE PAGE 5

SEE PAGE 7

- ① MILE POST
- PROPOSED M&R SITE
- PROPOSED MAINLINE VALVE SITE
- PROPOSED 24-INCH DIAMETER PIPELINE
- LINE 880 20-INCH DIAMETER RELOCATION
- EXISTING LINE 880 20-INCH DIAMETER PIPELINE
- PROPOSED ACCESS ROAD
- NWI WETLAND
- PROPOSED CONTRACTOR YARD/STAGING AREA
- TOWNSHIP BOUNDARY
- COUNTY BOUNDARY
- STATE BOUNDARY
- USGS QUADRANGLE BOUNDARY

SPIRE STL PIPELINE NWI TOPOGRAPHIC MAP

ENGLISH & OTTER CREEK TOWNSHIPS, JERSEY COUNTY, ILLINOIS



ABSOLUTE SCALE:
1:24,000

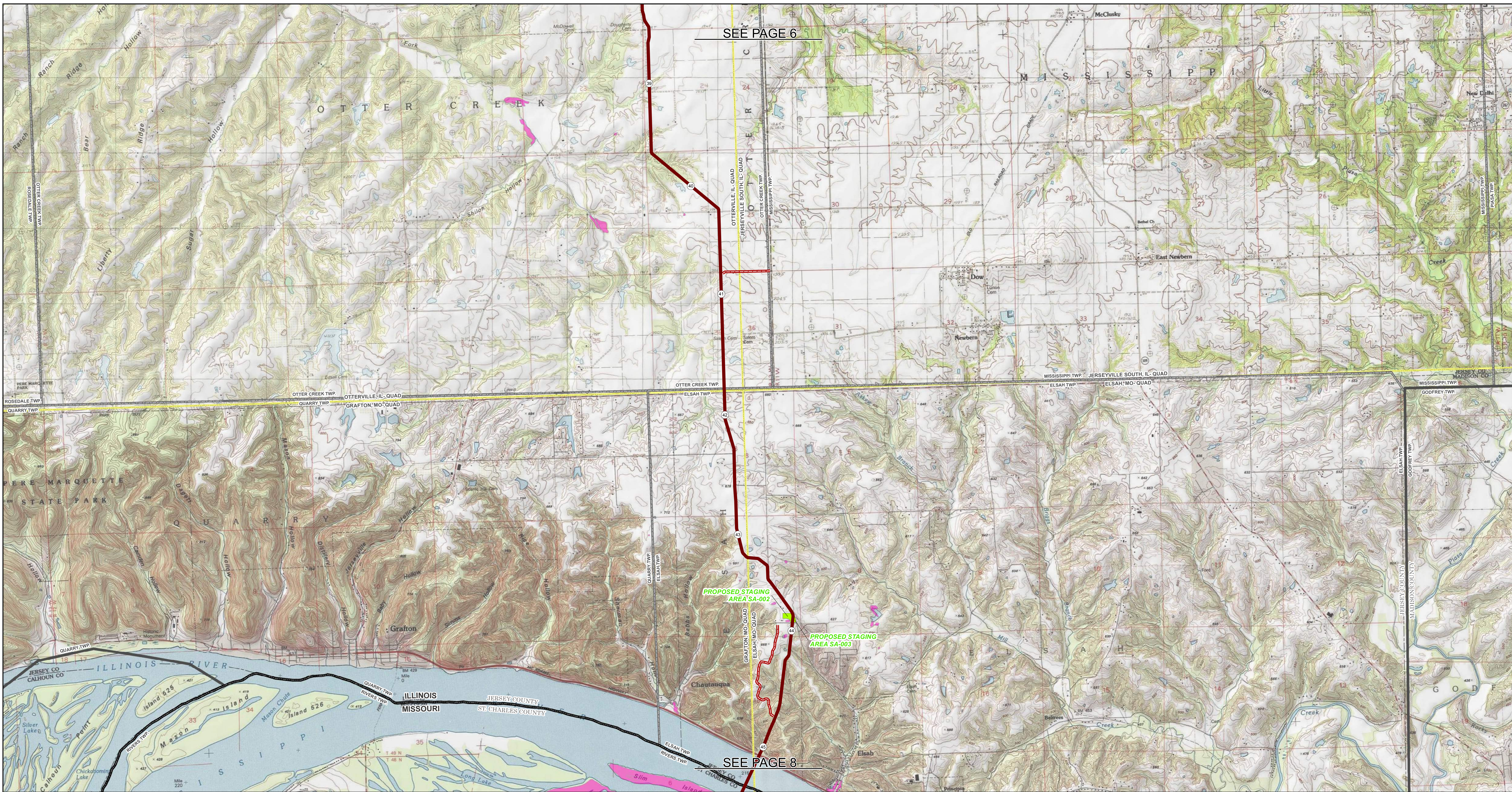
REFERENCE SCALE:
1 IN = 2,000 FEET

PREPARED FOR
Spire STL Pipeline

PREPARED BY
M M MOTT MACDONALD

DRAWN BY:	EAP 12/16/2016
CHECKED BY:	KPW 12/16/2016
ENG. APPROVAL:	DG 12/19/2016
APPROVED BY:	JW 12/19/2016
REV. DATE:	01/2017
REVISION:	2
DESC:	ISSUE FOR FERC
PAGE:	STLP-NWI-006

MAPS COMPILED UTILIZING ESRI TOPOGRAPHIC BASEMAP.
WETLAND DATA SOURCED FROM U.S. FISH AND WILDLIFE SERVICE NATIONAL WETLAND INVENTORY (NWI) DATASET.



SEE PAGE 6

SEE PAGE 8

- ① MILE POST
- PROPOSED M&R SITE
- PROPOSED MAINLINE VALVE SITE
- PROPOSED 24-INCH DIAMETER PIPELINE
- LINE 880 20-INCH DIAMETER RELOCATION
- EXISTING LINE 880 20-INCH DIAMETER PIPELINE
- PROPOSED ACCESS ROAD
- NWI WETLAND
- PROPOSED CONTRACTOR YARD/STAGING AREA
- TOWNSHIP BOUNDARY
- COUNTY BOUNDARY
- STATE BOUNDARY
- USGS QUADRANGLE BOUNDARY

SPIRE STL PIPELINE NWI TOPOGRAPHIC MAP

OTTER CREEK & ELSAH TOWNSHIPS, JERSEY COUNTY, ILLINOIS



ABSOLUTE SCALE:
1:24,000

REFERENCE SCALE:
1 IN = 2,000 FEET

PREPARED FOR

Spire STL Pipeline

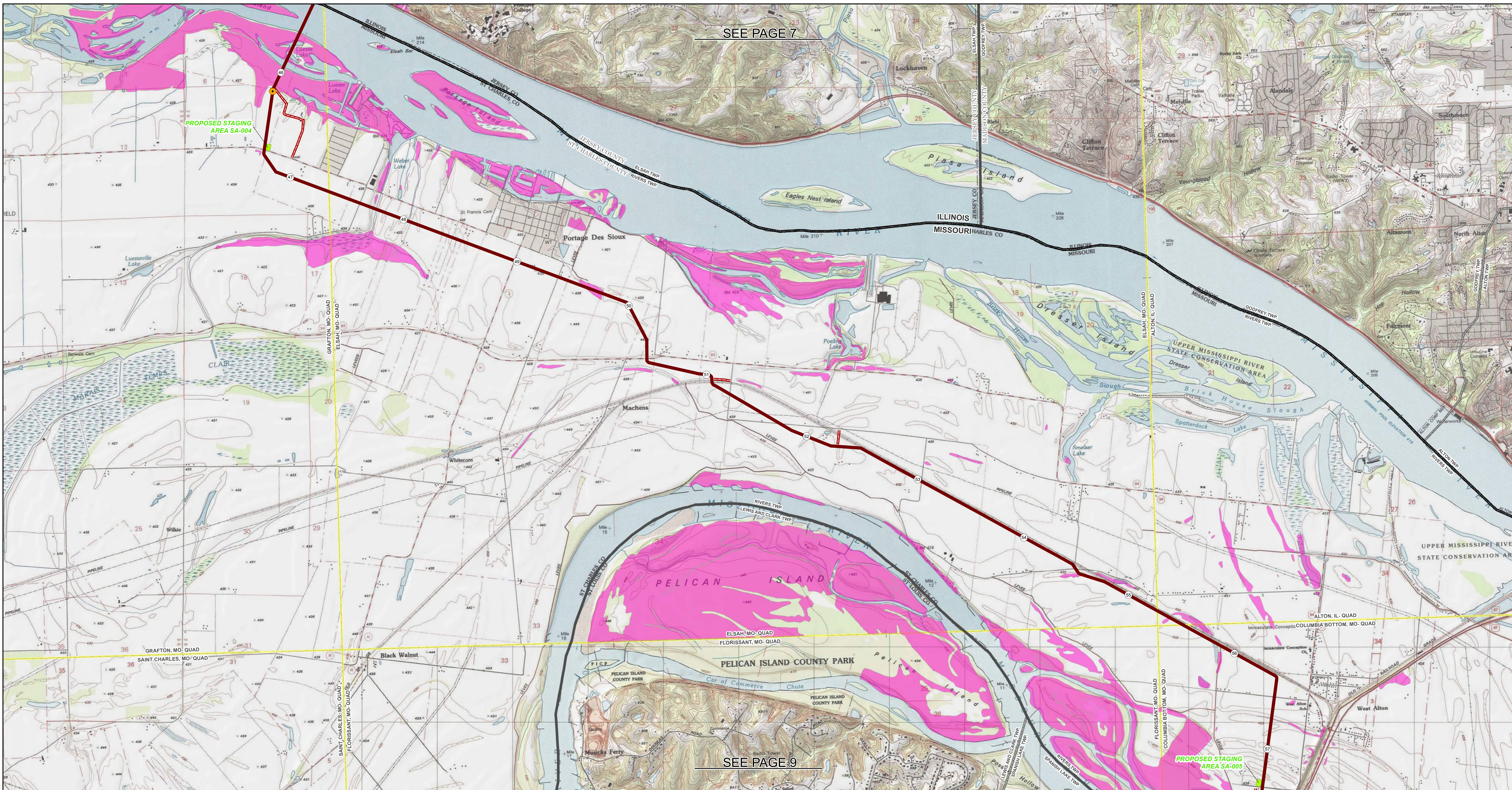
PREPARED BY

M M

**MOTT
MACDONALD**

DRAWN BY:	EAP 12/16/2016
CHECKED BY:	KPW 12/16/2016
ENG. APPROVAL:	DG 12/19/2016
APPROVED BY:	JW 12/19/2016
REV. DATE:	01/2017
REVISION:	2
DESC:	ISSUE FOR FERC
PAGE:	STLP-NWI-007

MAPS COMPILED UTILIZING ESRI TOPOGRAPHIC BASEMAP.
WETLAND DATA SOURCED FROM U.S. FISH AND WILDLIFE SERVICE NATIONAL WETLAND INVENTORY (NWI) DATASET.



SEE PAGE 7

SEE PAGE 9

- ① MILE POST
- PROPOSED M&R SITE
- PROPOSED MAINLINE VALVE SITE
- PROPOSED 24-INCH DIAMETER PIPELINE
- LINE 880 20-INCH DIAMETER RELOCATION
- EXISTING LINE 880 20-INCH DIAMETER PIPELINE
- PROPOSED ACCESS ROAD
- NWI WETLAND
- PROPOSED CONTRACTOR YARD/STAGING AREA
- TOWNSHIP BOUNDARY
- COUNTY BOUNDARY
- STATE BOUNDARY
- USGS QUADRANGLE BOUNDARY

SPIRE STL PIPELINE NWI TOPOGRAPHIC MAP

RIVERS TOWNSHIP, ST. CHARLES COUNTY, MISSOURI AND GODFREY
& ALTON TOWNSHIPS, MADISON COUNTY, ILLINOIS



N
W —+— E
S

ABSOLUTE SCALE:
1:24,000

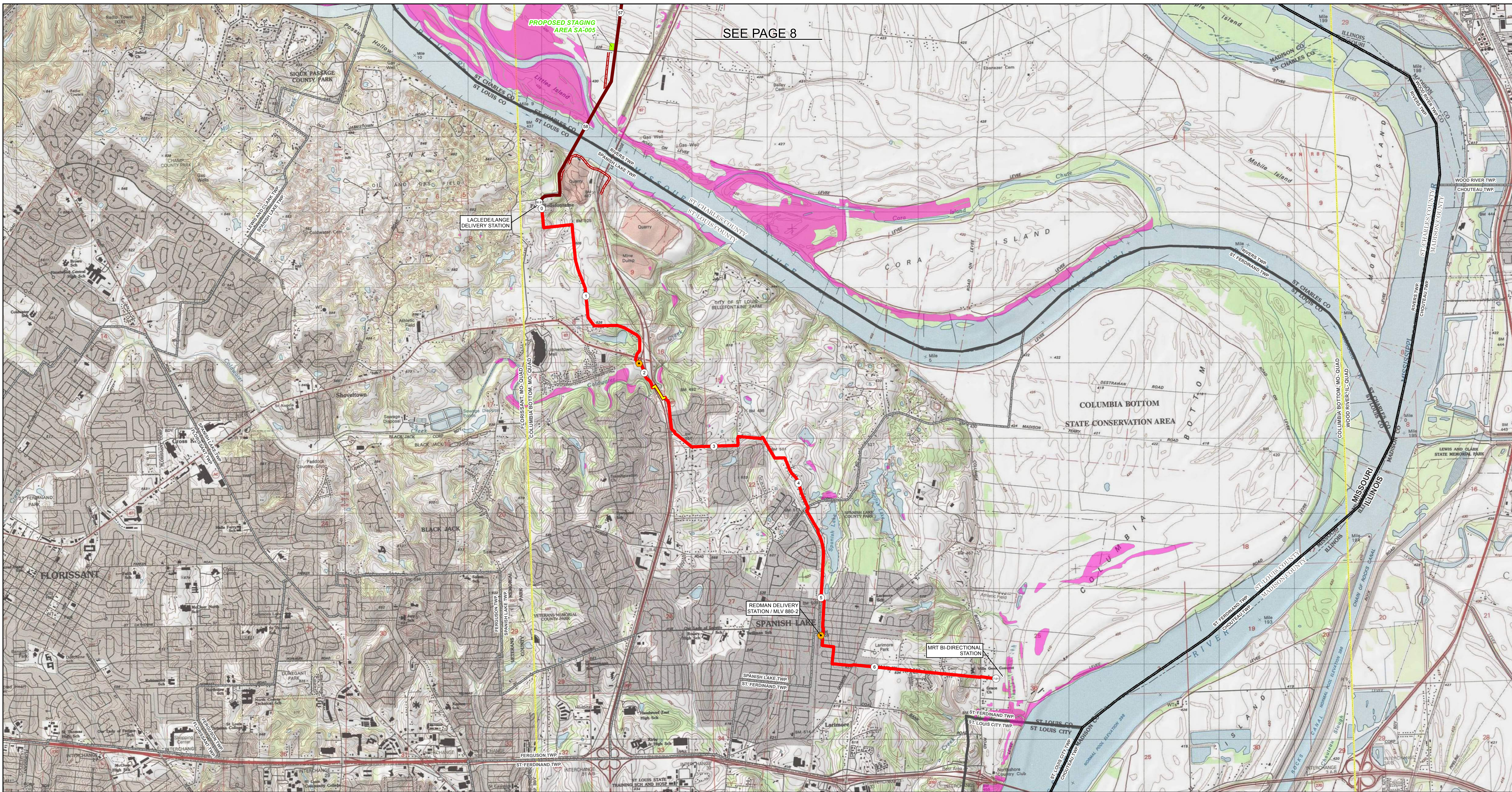
REFERENCE SCALE:
1 IN = 2,000 FEET

PREPARED FOR
Spire STL Pipeline

PREPARED BY
M M MOTT MACDONALD

DRAWN BY:	EAP 12/16/2016
CHECKED BY:	KPW 12/16/2016
ENG. APPROVAL:	DG 12/19/2016
APPROVED BY:	JW 12/19/2016
REV. DATE:	01/2017
REVISION:	2
DESC:	ISSUE FOR FERC
PAGE:	STLP-NWI-008

MAPS COMPILED UTILIZING ESRI TOPOGRAPHIC BASEMAP.
WETLAND DATA SOURCED FROM U.S. FISH AND WILDLIFE SERVICE NATIONAL WETLAND INVENTORY (NWI) DATASET.



SEE PAGE 8

PROPOSED STAGING AREA SA-005

LACLEDELANGE DELIVERY STATION

REDMAN DELIVERY STATION / MLV 880-2

MRT BI-DIRECTIONAL STATION

- ① MILE POST
- PROPOSED M&R SITE
- PROPOSED MAINLINE VALVE SITE
- PROPOSED 24-INCH DIAMETER PIPELINE
- LINE 880 20-INCH DIAMETER RELOCATION
- EXISTING LINE 880 20-INCH DIAMETER PIPELINE
- PROPOSED ACCESS ROAD
- NWI WETLAND
- PROPOSED CONTRACTOR YARD/STAGING AREA
- TOWNSHIP BOUNDARY
- COUNTY BOUNDARY
- STATE BOUNDARY
- USGS QUADRANGLE BOUNDARY

SPIRE STL PIPELINE NWI TOPOGRAPHIC MAP

RIVERS TOWNSHIP, ST. CHARLES COUNTY, AND SPANISH LAKE & ST. FERDINAND TOWNSHIPS, ST. LOUIS COUNTY, MISSOURI



N
W —+— E
S

ABSOLUTE SCALE:
1:24,000

REFERENCE SCALE:
1 IN = 2,000 FEET

PREPARED FOR
Spire STL Pipeline

PREPARED BY
M M
MOTT MACDONALD

DRAWN BY:	EAP 12/16/2016
CHECKED BY:	KPW 12/16/2016
ENG. APPROVAL:	DG 12/19/2016
APPROVED BY:	JW 12/19/2016
REV. DATE:	01/2017
REVISION:	2
DESC:	ISSUE FOR FERC
PAGE:	STLP-NWI-009

MAPS COMPILED UTILIZING ESRI TOPOGRAPHIC BASEMAP.
WETLAND DATA SOURCED FROM U.S. FISH AND WILDLIFE SERVICE NATIONAL WETLAND INVENTORY (NWI) DATASET.