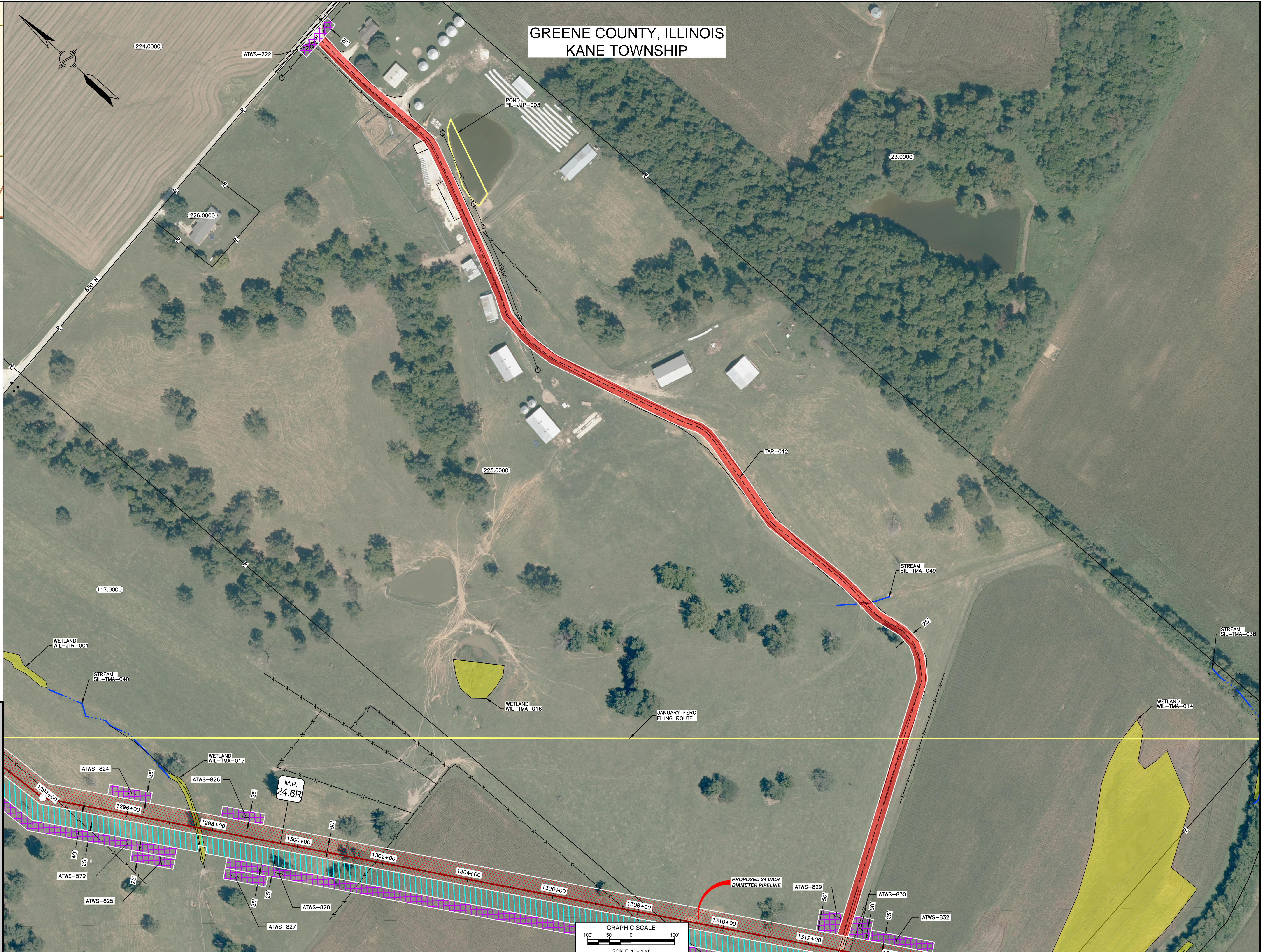




LOCATION MAP
N.T.S.

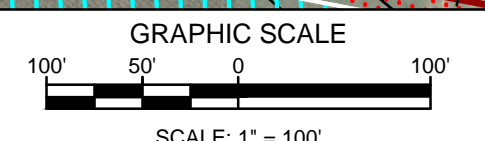
GREENE COUNTY, ILLINOIS
KANE TOWNSHIP



NOTES:
 1. THE IMAGERY SHOWN WAS PROVIDED BY AERIAL DATA SERVICES, 2016. ADDITIONAL IMAGERY SUPPLEMENTED FROM USFWS-NWI AND USGS.
 2. EXISTING FEATURES SHOWN WERE SURVEYED BY MOTT MACDONALD AND DIGITIZED FROM IMAGERY. ALL LOCATIONS ARE APPROXIMATE, AND SHALL BE VERIFIED BY CONTRACTOR.
 3. PROPERTY LINES DEPICTED ON THIS PLAN ARE BASED ON GIS TAX MAP DATA. ROAD CENTERLINES SHOWN ARE FROM PUBLICLY AVAILABLE DATA AND HAVE NOT BEEN SURVEYED.

LEGEND

	PROPOSED PERMANENT EASEMENT
	TEMPORARY WORKSPACE
	ADDITIONAL TEMPORARY WORKSPACE (ATWS)
	PROPOSED STAGING AREA
	ACCESS ROAD
	PROPOSED 24-INCH DIAMETER PIPELINE
	EXISTING GAS PIPELINE
	EXISTING FOREIGN PIPELINE
	OVERHEAD POWER LINE
	EXISTING FIBER OPTIC LINE
	MMID
	PROPERTY LINE
	MUNICIPAL LINE
	WETLAND (DESKTOP)
	WETLAND (DELINEATED)
	POND (DELINEATED)
	∠ OF STREAM (DESKTOP)
	∠ OF STREAM (DELINEATED)
	FENCE LINE



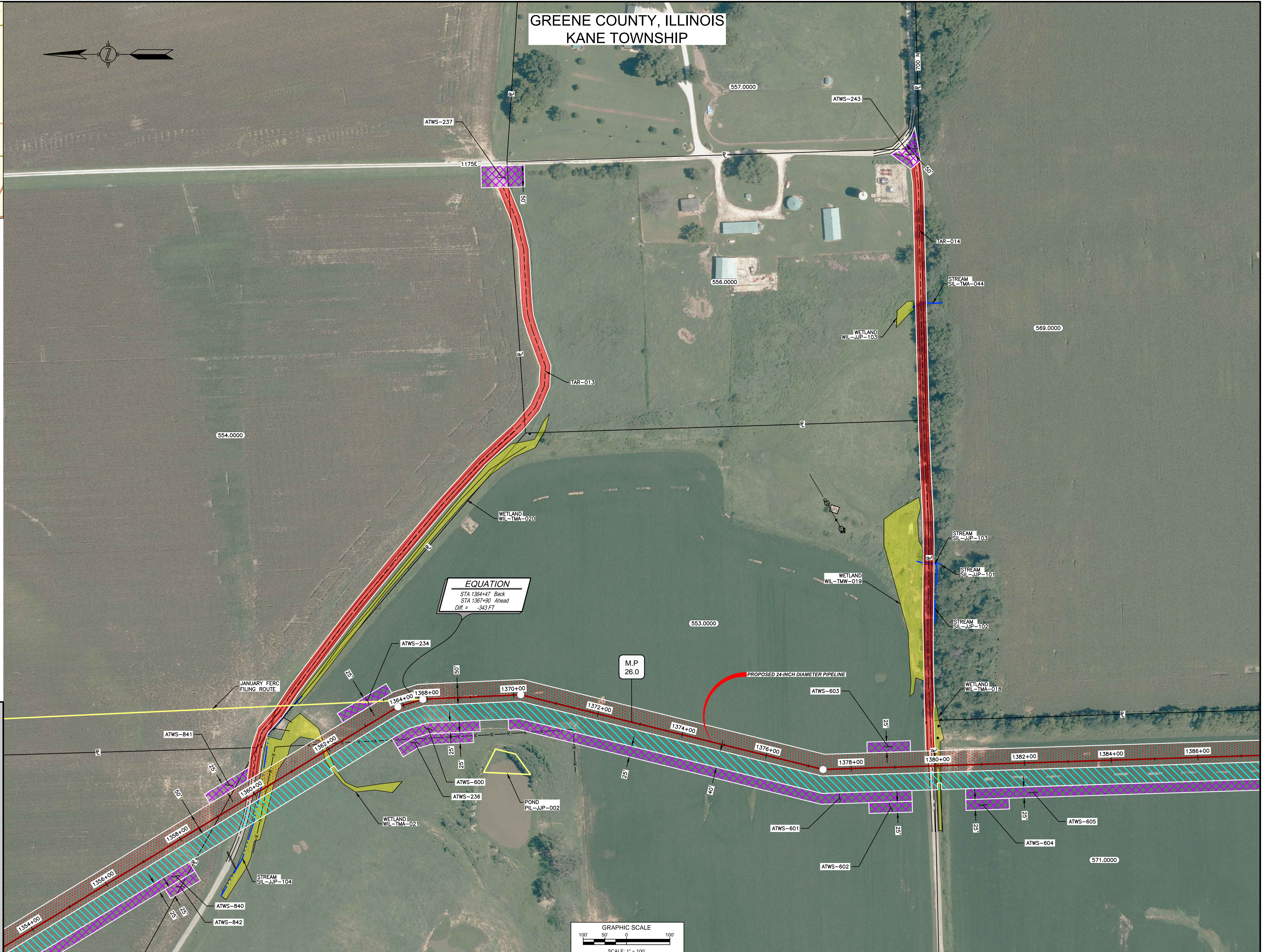
REFERENCE DRAWINGS		REFERENCE DRAWINGS		REVISIONS				REVISIONS				APPROVALS						
DWG. NO.	TITLE	DWG. NO.	TITLE	NO.	REVISIONS	DATE	DRAWN	CK	APPR	NO.	REVISIONS	DATE	DRAWN	CK	APPR	DATE	DATE	
STLP-A-029	ALIGNMENT SHEET			1	ISSUE FOR FERC	01/2017	GH	EB	DCG									
				2	AMENDMENT TO FERC	04/2017	KAM	RJP	DGG									

DRAWN BY	DATE	ENG. APPROVAL	DATE	CLIENT APPROVAL	DATE
ACS	04/2017	DGG	04/2017		
CHECKED BY	DATE	P.M. APPROVAL	DATE	SCALE: 1" = 100'	
WAH	04/2017	JEV	04/2017	FILENAME: STLP-AR-001.DWG	
				TYPE: ACAD	

PREPARED FOR	PREPARED BY	SPIRE STL PIPELINE PROJECT	
Spire STL Pipeline	MOTT MACDONALD	PROPOSED 24-INCH DIAMETER PIPELINE	
		ACCESS ROAD SITE PLAN - TAR-012	
		GREENE COUNTY, ILLINOIS	



LOCATION MAP
N.T.S.

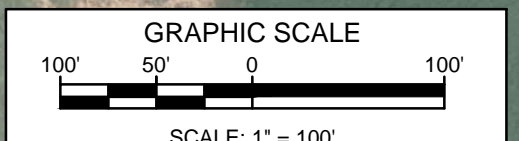


EQUATION
 STA 1364+47 Back
 STA 1367+90 Ahead
 Diff = -343 FT

- NOTES:**
1. THE IMAGERY SHOWN WAS PROVIDED BY AERIAL DATA SERVICES, 2016. ADDITIONAL IMAGERY SUPPLEMENTED FROM USFWS-NWI AND USGS.
 2. EXISTING FEATURES SHOWN WERE SURVEYED BY MOTT MACDONALD AND DIGITIZED FROM IMAGERY. ALL LOCATIONS ARE APPROXIMATE, AND SHALL BE VERIFIED BY CONTRACTOR.
 3. PROPERTY LINES DEPICTED ON THIS PLAN ARE BASED ON GIS TAX MAP DATA. ROAD CENTERLINES SHOWN ARE FROM PUBLICLY AVAILABLE DATA AND HAVE NOT BEEN SURVEYED.

LEGEND

	PROPOSED PERMANENT EASEMENT
	TEMPORARY WORKSPACE
	ADDITIONAL TEMPORARY WORKSPACE (ATWS)
	PROPOSED STAGING AREA
	ACCESS ROAD
	PROPOSED 24-INCH DIAMETER PIPELINE
	EXISTING GAS PIPELINE
	EXISTING FOREIGN PIPELINE
	OVERHEAD POWER LINE
	EXISTING FIBER OPTIC LINE
	M MID
	PROPERTY LINE
	MUNICIPAL LINE
	WETLAND (DESKTOP)
	WETLAND (DELINEATED)
	POND (DELINEATED)
	1/2 OF STREAM (DESKTOP)
	1/2 OF STREAM (DELINEATED)
	FENCE LINE



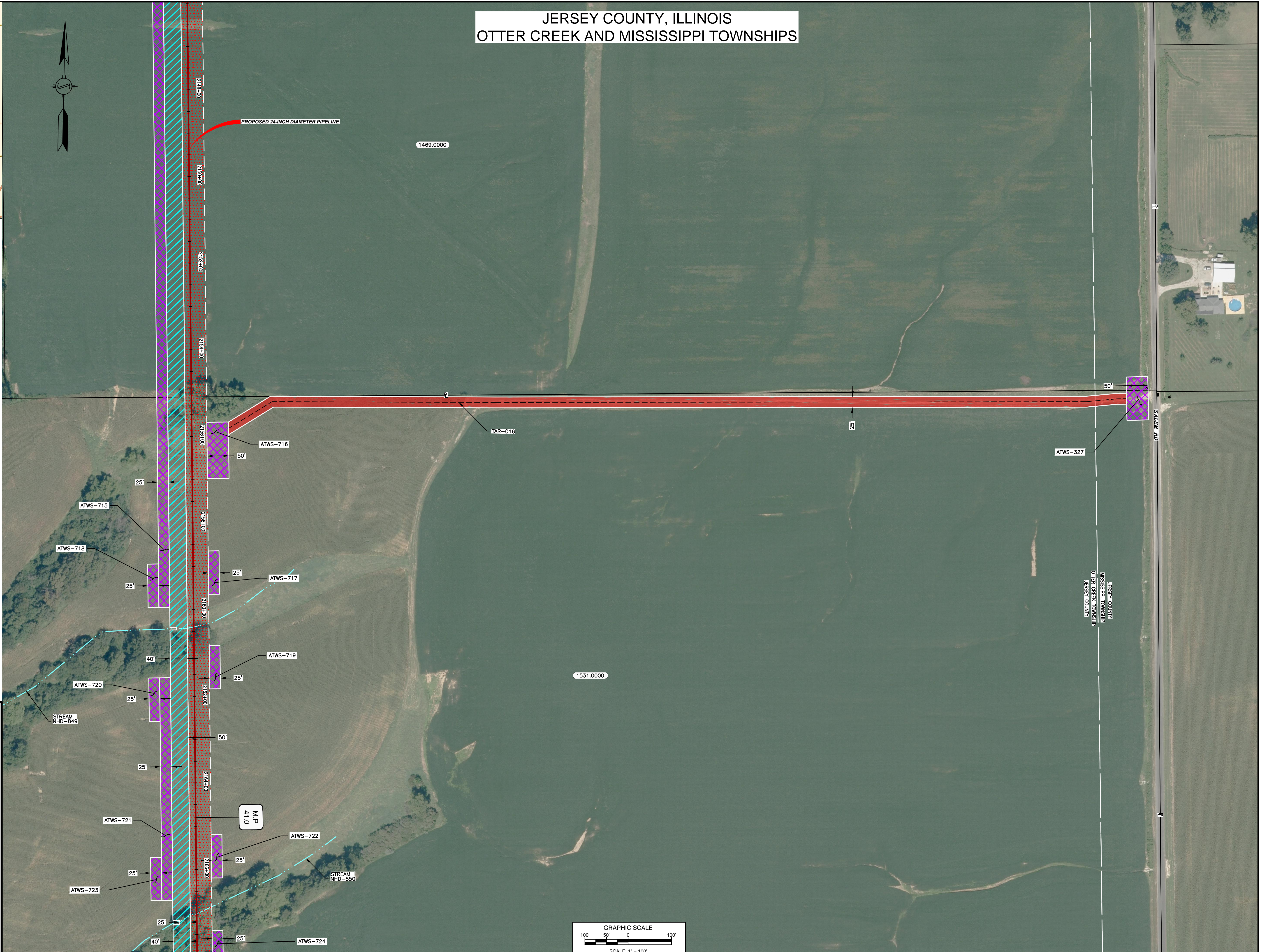
REFERENCE DRAWINGS		REFERENCE DRAWINGS		REVISIONS				REVISIONS				APPROVALS				PREPARED FOR		PREPARED BY		SPIRE STL PIPELINE PROJECT								
DWG. NO.	TITLE	DWG. NO.	TITLE	NO.	REVISIONS	DATE	DRAWN	CK	APPR	NO.	REVISIONS	DATE	DRAWN	CK	APPR	DRAWN BY	DATE	ENG. APPROVAL	DATE	CLIENT APPROVAL	DATE	SCALE: 1"=100'	FILENAME: STLP-AR-002.DWG	TYPE: ACAD	FILENAME: STLP-AR-002.DWG	TYPE: ACAD	FILENAME: STLP-AR-002.DWG	TYPE: ACAD
STLP-A-030	ALIGNMENT SHEET			1	ISSUE FOR FERC	01/2017	GH	EB	DGC							ACS	04/2017	DGG	04/2017									
STLP-A-031	ALIGNMENT SHEET			2	AMENDMENT TO FERC	04/2017	KAM	RJP	DGG							WAH	04/2017	JEW	04/2017									

SPIRE STL PIPELINE PROJECT
 PROPOSED 24-INCH DIAMETER PIPELINE
 ACCESS ROAD SITE PLAN - TAR-013 & TAR-014
 GREENE COUNTY, ILLINOIS

JERSEY COUNTY, ILLINOIS OTTER CREEK AND MISSISSIPPI TOWNSHIPS



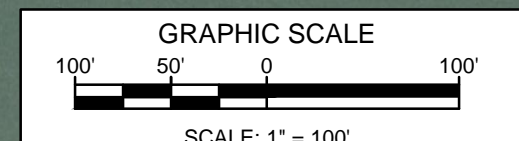
LOCATION MAP
N.T.S.



- NOTES:**
1. THE IMAGERY SHOWN WAS PROVIDED BY AERIAL DATA SERVICES, 2016. ADDITIONAL IMAGERY SUPPLEMENTED FROM USFWS-NWI AND USGS.
 2. EXISTING FEATURES SHOWN WERE SURVEYED BY MOTT MACDONALD AND DIGITIZED FROM IMAGERY. ALL LOCATIONS ARE APPROXIMATE, AND SHALL BE VERIFIED BY CONTRACTOR.
 3. PROPERTY LINES DEPICTED ON THIS PLAN ARE BASED ON GIS TAX MAP DATA.
 4. ROAD CENTERLINES SHOWN ARE FROM PUBLICLY AVAILABLE DATA AND HAVE NOT BEEN SURVEYED.

LEGEND

	PROPOSED PERMANENT EASEMENT
	TEMPORARY WORKSPACE
	ADDITIONAL TEMPORARY WORKSPACE (ATWS)
	PROPOSED STAGING AREA
	ACCESS ROAD
	PROPOSED 24-INCH DIAMETER PIPELINE
	EXISTING GAS PIPELINE
	EXISTING FOREIGN PIPELINE
	OVERHEAD POWER LINE
	EXISTING FIBER OPTIC LINE
	MMID
	PROPERTY LINE
	MUNICIPAL LINE
	WETLAND (DESKTOP)
	WETLAND (DELINEATED)
	POND (DELINEATED)
	∅ OF STREAM (DESKTOP)
	∅ OF STREAM (DELINEATED)
	FENCE LINE



REFERENCE DRAWINGS		REFERENCE DRAWINGS		REVISIONS				REVISIONS				APPROVALS										
DWG. NO.	TITLE	DWG. NO.	TITLE	NO.	REVISIONS	DATE	DRAWN	CK	APPR	NO.	REVISIONS	DATE	DRAWN	CK	APPR	DRAWN BY	DATE	ENG. APPROVAL	DATE	CLIENT APPROVAL	DATE	
STLP-A-047	ALIGNMENT SHEET			1	ISSUE FOR FERC	01/2017	GH	EB	DGG							GH	01/2017	DGG	01/2017			
				2	AMENDMENT TO FERC	04/2017	KAM	RJP	DGG							RJP	01/2017	JEV	01/2017			

PREPARED FOR

 PREPARED BY

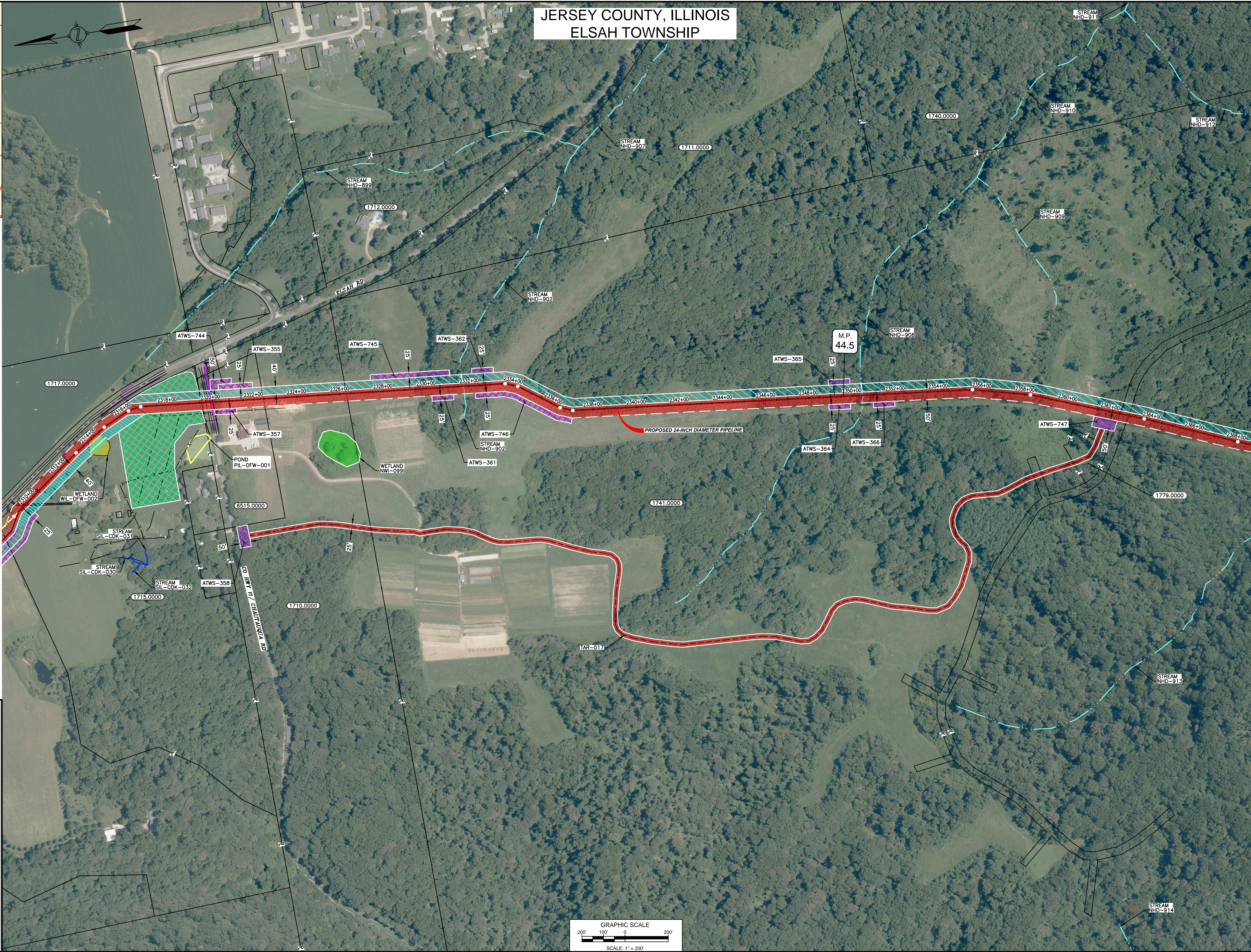
Spire STL Pipeline
MOTT MACDONALD

SPIRE STL PIPELINE PROJECT
PROPOSED 24-INCH DIAMETER PIPELINE
ACCESS ROAD SITE PLAN - TAR-016
JERSEY COUNTY, ILLINOIS



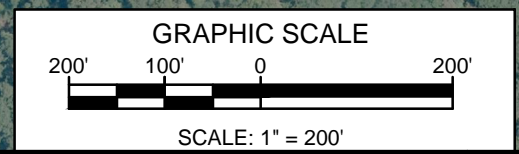
LOCATION MAP
N.T.S.

JERSEY COUNTY, ILLINOIS
ELSAH TOWNSHIP



- NOTES:
1. THE IMAGERY SHOWN WAS PROVIDED BY AERIAL DATA SERVICES, 2016. ADDITIONAL IMAGERY SUPPLEMENTED FROM USFWS-NWI AND USGS.
 2. EXISTING FEATURES SHOWN WERE SURVEYED BY MOTT MACDONALD AND DIGITIZED FROM IMAGERY. ALL LOCATIONS ARE APPROXIMATE, AND SHALL BE VERIFIED BY CONTRACTOR.
 3. PROPERTY LINES DEPICTED ON THIS PLAN ARE BASED ON GIS TAX MAP DATA. ROAD CENTERLINES SHOWN ARE FROM PUBLICLY AVAILABLE DATA AND HAVE NOT BEEN SURVEYED.

LEGEND	
	PROPOSED PERMANENT EASEMENT
	TEMPORARY WORKSPACE
	ADDITIONAL TEMPORARY WORKSPACE (ATWS)
	PROPOSED STAGING AREA
	ACCESS ROAD
	PROPOSED 24-INCH DIAMETER PIPELINE
	EXISTING GAS PIPELINE
	EXISTING FOREIGN PIPELINE
	OVERHEAD POWER LINE
	EXISTING FIBER OPTIC LINE
	MMID
	PROPERTY LINE
	MUNICIPAL LINE
	WETLAND (DESKTOP)
	WETLAND (DELINEATED)
	POND (DELINEATED)
	∅ OF STREAM (DESKTOP)
	∅ OF STREAM (DELINEATED)
	FENCE LINE



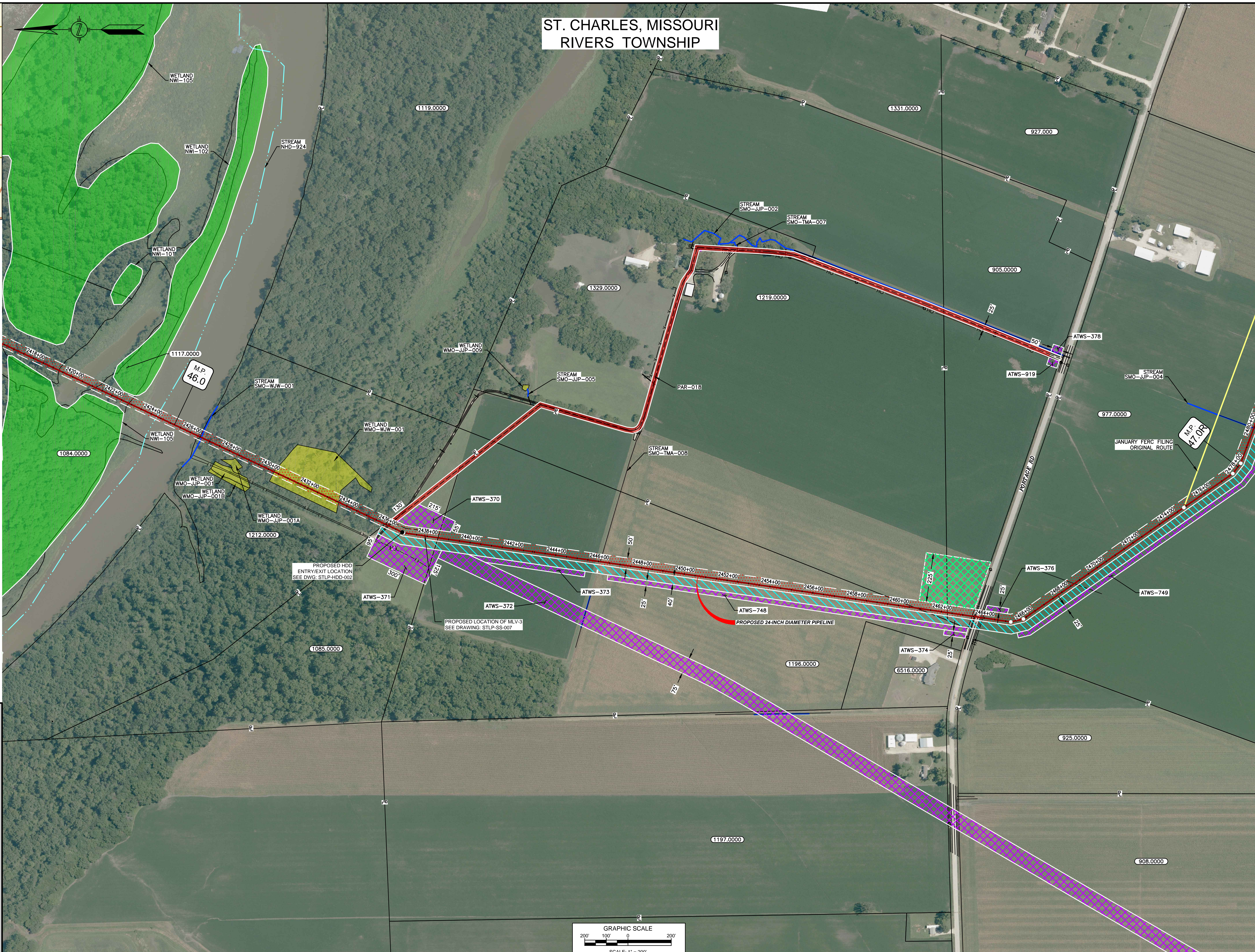
REFERENCE DRAWINGS		REFERENCE DRAWINGS		REVISIONS				REVISIONS				APPROVALS				PREPARED FOR Spire STL Pipeline	PREPARED BY MOTT MACDONALD	PROJECT SPIRE STL PIPELINE PROJECT ACCESS ROAD SITE PLAN - TAR-017 JERSEY COUNTY, ILLINOIS				
DWG. NO.	TITLE	DWG. NO.	TITLE	NO.	REVISIONS	DATE	DRAWN	CK	APPR	NO.	REVISIONS	DATE	DRAWN	CK	APPR				DRAWN BY	DATE	ENG. APPROVAL	DATE
STLP-A-050	ALIGNMENT SHEET			1	ISSUE FOR FERC	01/2017	GH	EB	DCG								GH	01/2017	DGG	01/2017		
STLP-A-051	ALIGNMENT SHEET			2	AMENDMENT TO FERC	04/2017	KAM	RJP	DGG								RJP	01/2017	JEW	01/2017		

COURTESY OF ILLINOIS DEPARTMENT OF TRANSPORTATION, ILLINOIS DEPARTMENT OF NATURAL RESOURCES, AND ILLINOIS DEPARTMENT OF REVENUE

ST. CHARLES, MISSOURI
RIVERS TOWNSHIP



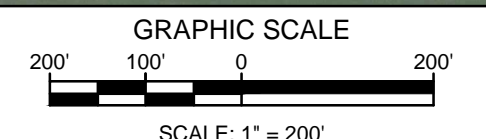
LOCATION MAP
N.T.S.



- NOTES:
1. THE IMAGERY SHOWN WAS PROVIDED BY AERIAL DATA SERVICES, 2016. ADDITIONAL IMAGERY SUPPLEMENTED FROM USFWS-NWI AND USGS.
 2. EXISTING FEATURES SHOWN WERE SURVEYED BY MOTT MACDONALD AND DIGITIZED FROM IMAGERY. ALL LOCATIONS ARE APPROXIMATE, AND SHALL BE VERIFIED BY CONTRACTOR.
 3. PROPERTY LINES DEPICTED ON THIS PLAN ARE BASED ON GIS TAX MAP DATA.
 4. ROAD CENTERLINES SHOWN ARE FROM PUBLICLY AVAILABLE DATA AND HAVE NOT BEEN SURVEYED.

LEGEND

- PROPOSED PERMANENT EASEMENT
- TEMPORARY WORKSPACE
- ADDITIONAL TEMPORARY WORKSPACE (ATWS)
- PROPOSED STAGING AREA
- ACCESS ROAD
- PROPOSED 24-INCH DIAMETER PIPELINE
- EXISTING GAS PIPELINE
- EXISTING FOREIGN PIPELINE
- OVERHEAD POWER LINE
- EXISTING FIBER OPTIC LINE
- MMID
- PROPERTY LINE
- MUNICIPAL LINE
- WETLAND (DESKTOP)
- WETLAND (DELINEATED)
- POND (DELINEATED)
- ϵ OF STREAM (DESKTOP)
- ϵ OF STREAM (DELINEATED)
- FENCE LINE



DWG. NO.	TITLE
STLP-A-053	ALIGNMENT SHEET
STLP-A-054	ALIGNMENT SHEET
STLP-HDD-002	HDD PROFILE OVERVIEW

DWG. NO.	TITLE
STLP-SS-007	MLV SITE 3

NO.	REVISIONS	DATE	DRAWN	CK	APPR
1	ISSUE FOR FERC	01/2017	GH	EB	DGG
2	AMENDMENT TO FERC	04/2017	KAM	RJP	DGG

NO.	REVISIONS	DATE	DRAWN	CK	APPR

DRAWN BY		DATE		ENG. APPROVALS		DATE		CLIENT APPROVAL		DATE	
GH		01/2017		DGG		01/2017					
CHECKED BY		DATE		P.M. APPROVAL		DATE		SCALE		FILENAME	
RJP		01/2017		JEW		01/2017		1"=200'	STLP-AR-006.DWG		

PREPARED FOR
Spire
STL Pipeline

PREPARED BY
M
MOTT
MACDONALD

SPIRE STL PIPELINE PROJECT
PROPOSED 24-INCH DIAMETER PIPELINE
ACCESS ROAD SITE PLAN - PAR-018
ST. CHARLES COUNTY, MISSOURI

C:\GIS\STLP\AR\006.DWG (2/20/2017 3:38 PM)

ST. LOUIS, MISSOURI
SPANISH LAKE TOWNSHIP



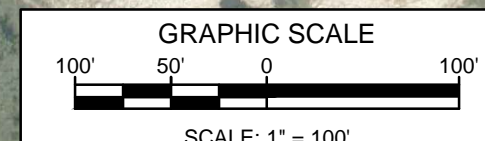
LOCATION MAP
N.T.S.



- NOTES:**
1. THE IMAGERY SHOWN WAS PROVIDED BY AERIAL DATA SERVICES, 2016. ADDITIONAL IMAGERY SUPPLEMENTED FROM USFWS-NWI AND USGS.
 2. EXISTING FEATURES SHOWN WERE SURVEYED BY MOTT MACDONALD AND DIGITIZED FROM IMAGERY. ALL LOCATIONS ARE APPROXIMATE, AND SHALL BE VERIFIED BY CONTRACTOR.
 3. PROPERTY LINES DEPICTED ON THIS PLAN ARE BASED ON GIS TAX MAP DATA.
 4. ROAD CENTERLINES SHOWN ARE FROM PUBLICLY AVAILABLE DATA AND HAVE NOT BEEN SURVEYED.

LEGEND

- PROPOSED PERMANENT EASEMENT
- TEMPORARY WORKSPACE
- ADDITIONAL TEMPORARY WORKSPACE (ATWS)
- PROPOSED STAGING AREA
- ACCESS ROAD
- PROPOSED 24-INCH DIAMETER PIPELINE
- EXISTING GAS PIPELINE
- EXISTING FOREIGN PIPELINE
- OVERHEAD POWER LINE
- EXISTING FIBER OPTIC LINE
- MMID
- PROPERTY LINE
- MUNICIPAL LINE
- WETLAND (DESKTOP)
- WETLAND (DELINEATED)
- POND (DELINEATED)
- 1/2 OF STREAM (DESKTOP)
- 1/2 OF STREAM (DELINEATED)
- FENCE LINE



DWG. NO.	TITLE	DWG. NO.	TITLE
STLP-A-068	ALIGNMENT SHEET		
STLP-HDD-007	HDD PROFILE OVERVIEW - MISSOURI RIVER MAINLINE		

NO.	REVISIONS	DATE	DRAWN	CK	APPR
1	ISSUE FOR FERC	1/2017	GH	EB	DGC
2	AMENDMENT TO FERC	4/2017	KAM	RJP	DGG

NO.	REVISIONS	DATE	DRAWN	CK	APPR

NO.	REVISIONS	DATE	DRAWN	CK	APPR

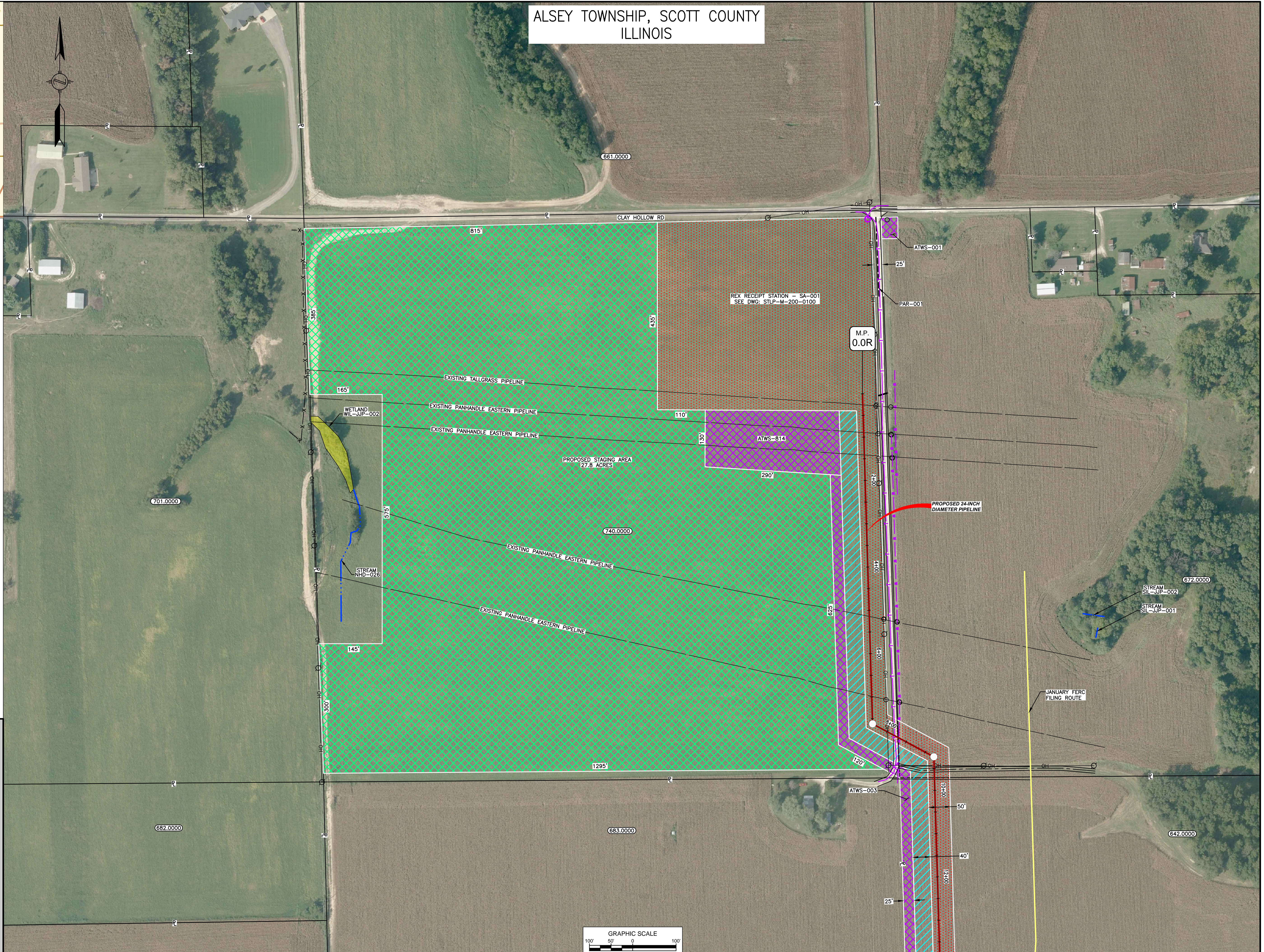
APPROVALS					
DRAWN BY	DATE	ENG. APPROVAL	DATE	CLIENT APPROVAL	DATE
RJP	01/2017	DGG	01/2017		
CHECKED BY	DATE	P.M. APPROVAL	DATE	SCALE: 1" = 100'	
RJP	01/2017	JEV	01/2017	FILENAME: STLP-AR-007.DWG	TYPE: ACAD

PREPARED FOR
Spire
STL Pipeline

PREPARED BY
MOTT MACDONALD

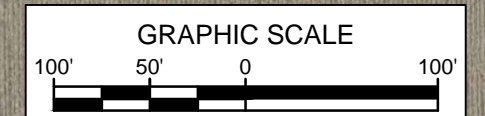
SPIRE STL PIPELINE PROJECT
PROPOSED 24-INCH DIAMETER PIPELINE
ACCESS ROAD SITE PLAN - TAR-021
ST. LOUIS, MISSOURI

ALSEY TOWNSHIP, SCOTT COUNTY ILLINOIS



LEGEND

- PROPOSED PERMANENT EASEMENT
- TEMPORARY WORKSPACE
- ADDITIONAL TEMPORARY WORKSPACE (ATWS)
- PROPOSED STAGING AREA
- ACCESS ROAD
- PROPOSED PIPELINE
- EXISTING GAS PIPELINE
- EXISTING FOREIGN PIPELINE
- OVERHEAD POWER LINE
- EXISTING FIBER OPTIC LINE
- MMID
- PROPERTY LINE
- MUNICIPAL LINE
- WETLAND (DESKTOP)
- WETLAND (DELINEATED)
- 5' OF STREAM (DESKTOP)
- 5' OF STREAM (DELINEATED)
- PROPOSED FENCE



REFERENCE DRAWINGS		REFERENCE DRAWINGS		REVISIONS				REVISIONS				APPROVALS								
DWG. NO.	TITLE	DWG. NO.	TITLE	NO.	DESCRIPTIONS	DATE	DRAWN	CK	APPR	NO.	DESCRIPTIONS	DATE	DRAWN	CK	APPR	DATE	DATE	DATE	DATE	
STLP-A-001	ALIGNMENT SHEET			1	ISSUE FOR FERC	01/2017	GJH	EB	DCG											
STLP-M-200-0100	REX RECEIPT STATION LAYOUT			2	AMENDMENT TO FERC	04/2017	RJP	KAM	DGG											
STLP-SS-001	REX RECEIPT STATION SITE PLAN																			

PREPARED FOR
Spire STL Pipeline

PREPARED BY
MOTT MACDONALD

SPIRE STL PIPELINE PROJECT
PROPOSED 24-INCH DIAMETER PIPELINE
STAGING AREA SITE PLAN
SCOTT COUNTY, ILLINOIS

DATE PLOTTED: 04/20/2017 10:48:00 AM; PLOTTER: HP DesignJet T1100; PLOT FILE: STLP-SS-001.dwg; PLOT SCALE: 1"=100'