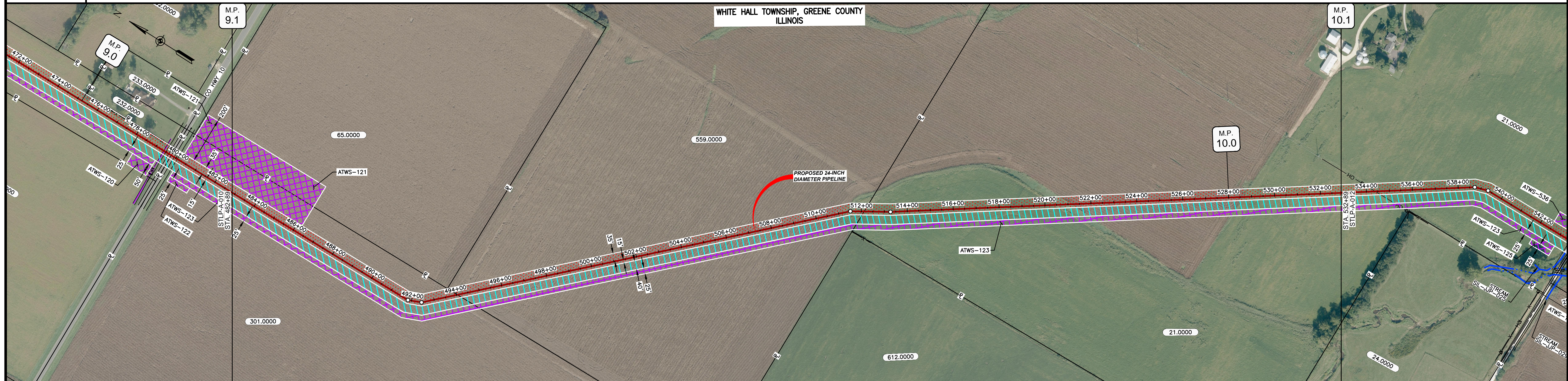


OWNERSHIP / FOOTAGE	482+89	301.0000	1115'	484+04	559.0000	1808'	512+12	21.0000	2077'	532+89
STATIONING				694+04 PROPERTY LINE			512+12 PROPERTY LINE			



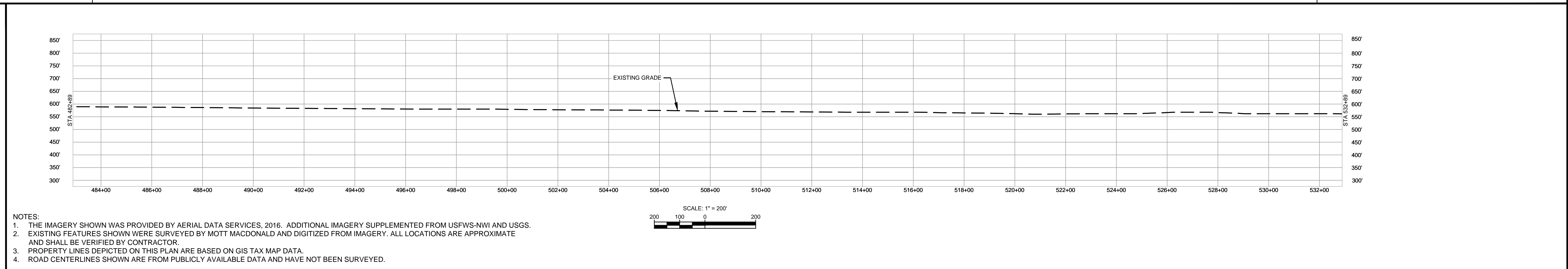
CLASS LOCATION/MAOP	CLASS I / 1440 PSIG													
MATERIAL & COATING	5000'													
DESIGN FACTOR	0.72													
CONSTRUCTION METHOD	OPEN CUT													
PIPELINE COVER	5'													
SOILS	51A	47A	51A	68A	51A	51B	86C2	675C2	86C2	675C2	86B	675C2	675B	675C2
LAND USE	AG													

THE LOCATION OF TRENCH PLUGS AND WATERBARS ARE INTENDED TO BE USED AS A GUIDE ONLY. EXACT LOCATION TO BE DETERMINED IN THE FIELD AS DIRECTED BY THE CHIEF INSPECTOR.

PERMANENT WATERBAR WITH COMPOST FILTER
SOOK AT WATERBAR DISCHARGE
PERMANENT TRENCH PLUG

ILLINOIS		
SLOPE	SLOPE BREAKER SPACING (FT)	TRENCH PLUG SPACING (FT)
5-15%	300	300
15-30%	200	200
>30%	100	100

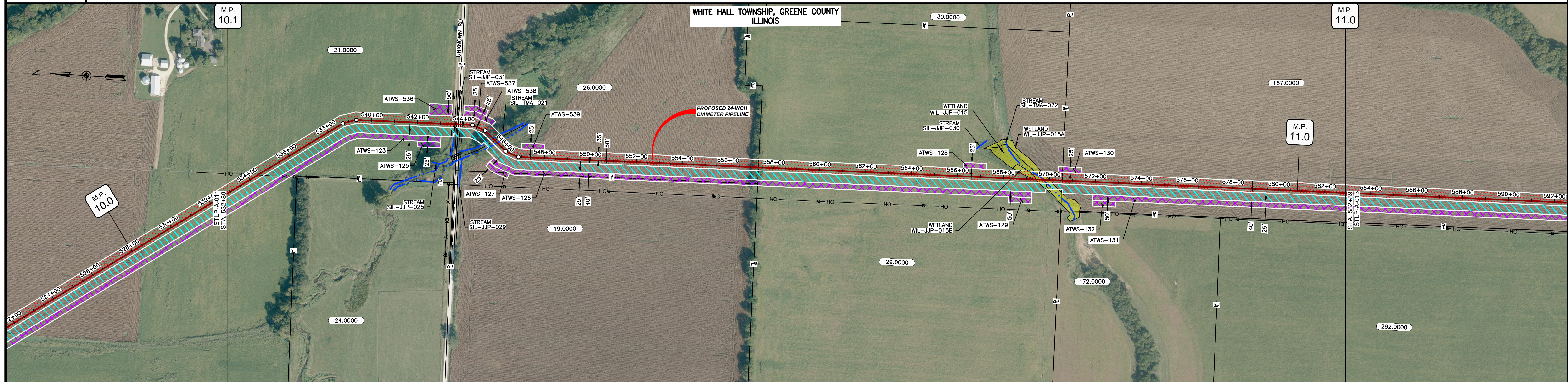
MISSOURI		
SLOPE	SLOPE BREAKER SPACING (FT)	TRENCH PLUG SPACING (FT)
<5%	125	---
5-10%	100	300
10-15%	75	300
15-20%	75	200
20-30%	50	200
30-35%	50	100
>35%	25	100



NOTES:
 1. THE IMAGERY SHOWN WAS PROVIDED BY AERIAL DATA SERVICES, 2016. ADDITIONAL IMAGERY SUPPLEMENTED FROM USFWS-NWI AND USGS.
 2. EXISTING FEATURES SHOWN WERE SURVEYED BY MOTT MACDONALD AND DIGITIZED FROM IMAGERY. ALL LOCATIONS ARE APPROXIMATE AND SHALL BE VERIFIED BY CONTRACTOR.
 3. PROPERTY LINES DEPICTED ON THIS PLAN ARE BASED ON GIS TAX MAP DATA.
 4. ROAD CENTERLINES SHOWN ARE FROM PUBLICLY AVAILABLE DATA AND HAVE NOT BEEN SURVEYED.

MATERIAL			REFERENCE DRAWINGS		REVISIONS				APPROVALS			PREPARED FOR		SPIRE STL PIPELINE PROJECT			
TAG	QUANTITY	DESCRIPTION	DWG. NO.	TITLE	NO.	REVISIONS	DATE	DRAWN	CK	APPR	DRAWN BY	DATE	SCALE PLAN: 1"=200'	Spire STL Pipeline	ALIGNMENT SHEET PROPOSED 24-INCH DIAMETER PIPELINE GREENE COUNTY, ILLINOIS STA. 482+89 TO STA. 532+89		
1	5000'	PIPE, 24.000" OD X 0.375" WT, API-5L, X70, DSAW, FBE COATED			1	ISSUE FOR FERC	01/2017	GH	EB	DGG	DP	04/2017	SCALE PROFILE H: 1"=200'				
					2	AMENDMENT TO FERC	04/2017	KAM	RJP	DGG	CHECKED BY	DATE	SCALE PROFILE V: 1"=200'	PREPARED BY M M MOTT MACDONALD	SCALE: 1"=200'		
											RJP	04/2017	CLIENT APPROVAL				
											ENG. APPROVAL	DATE					
											DGG	04/2017					
											P.M. APPROVAL	DATE					
											JEW	04/2017					

OWNERSHIP / FOOTAGE		21.0000	26.0000	29.0000	187.0000
		1087'	1357'	1323'	1233'
STATIONING		532+89	543+76	557+33	570+56



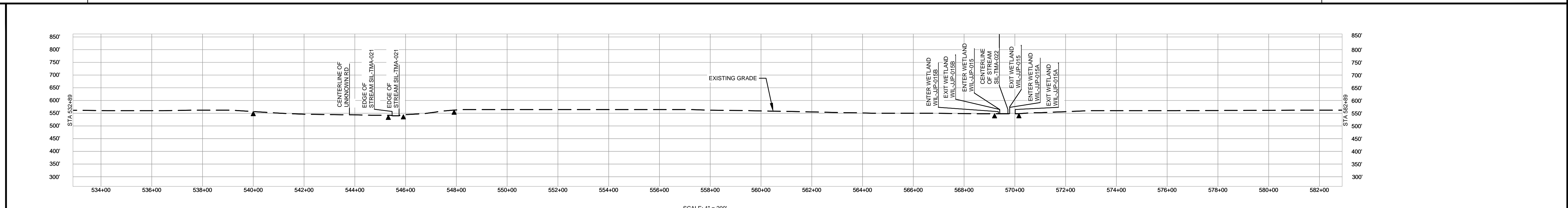
CLASS LOCATION/MAOP	CLASS I / 1440 PSIG											
MATERIAL & COATING	3074A											
DESIGN FACTOR	0.72					0.6						
CONSTRUCTION METHOD	OPEN CUT			OPEN CUT (FLUMED)			OPEN CUT			OPEN CUT (FLUMED)		
PIPELINE COVER	5'											
SOILS	675C2	3074A	280C2	675B	61A	51B	86C2	675C2	86C2	51B	51A	51B
LAND USE	AG	D	AG	OL	D	OL	AG	F	OW	F	AG	W

THE LOCATION OF TRENCH PLUGS AND WATERBARS ARE INTENDED TO BE USED AS A GUIDE ONLY. EXACT LOCATION TO BE DETERMINED IN THE FIELD AS DIRECTED BY THE CHIEF INSPECTOR.

PERMANENT WATERBAR WITH COMPOST FILTER
SOOK AT WATERBAR DISCHARGE
PERMANENT TRENCH PLUG

ILLINOIS		
SLOPE	SLOPE BREAKER SPACING (FT)	TRENCH PLUG SPACING (FT)
5-15%	300	300
15-30%	200	200
>30%	100	100

MISSOURI		
SLOPE	SLOPE BREAKER SPACING (FT)	TRENCH PLUG SPACING (FT)
<5%	125	---
5-10%	100	300
10-15%	75	300
15-20%	75	200
20-30%	50	200
30-35%	50	100
>35%	25	100

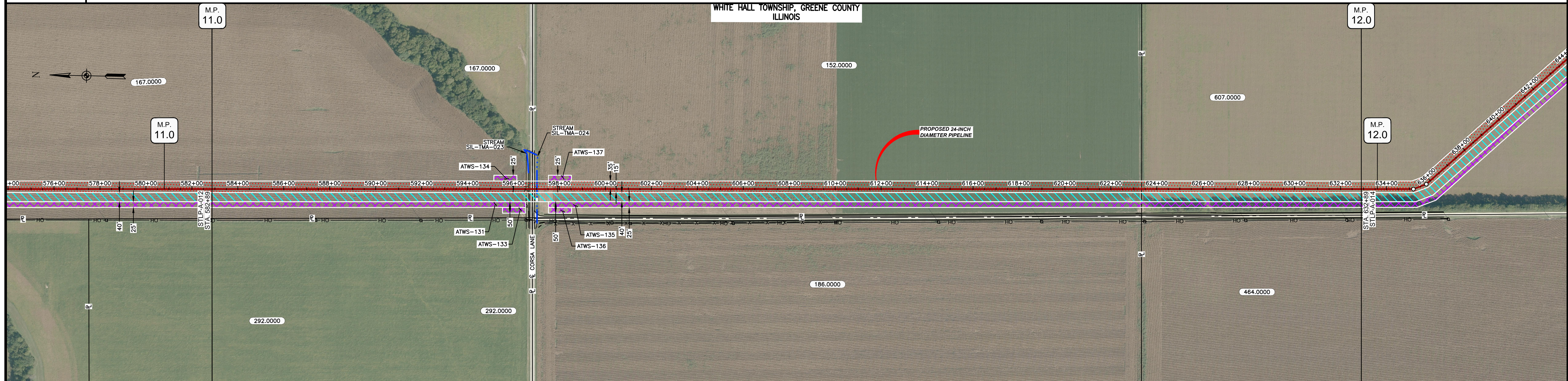


NOTES:

1. THE IMAGERY SHOWN WAS PROVIDED BY AERIAL DATA SERVICES, 2016. ADDITIONAL IMAGERY SUPPLEMENTED FROM USFWS-NWI AND USGS.
2. EXISTING FEATURES SHOWN WERE SURVEYED BY MOTT MACDONALD AND DIGITIZED FROM IMAGERY. ALL LOCATIONS ARE APPROXIMATE AND SHALL BE VERIFIED BY CONTRACTOR.
3. PROPERTY LINES DEPICTED ON THIS PLAN ARE BASED ON GIS TAX MAP DATA.
4. ROAD CENTERLINES SHOWN ARE FROM PUBLICLY AVAILABLE DATA AND HAVE NOT BEEN SURVEYED.

MATERIAL			REFERENCE DRAWINGS			REVISIONS				APPROVALS			SPIRE STL PIPELINE PROJECT			
TAG	QUANTITY	DESCRIPTION	DWG. NO.	TITLE	NO.	REVISIONS	DATE	DRAWN	CK	APPR	DRAWN BY	DATE	SCALE PLAN: 1"=200'	PREPARED FOR		ALIGNMENT SHEET PROPOSED 24-INCH DIAMETER PIPELINE GREENE COUNTY, ILLINOIS STA. 532+89 TO STA. 582+89
1	4920'	PIPE, 24.000" OD X 0.375" WT, API-5L, X70, DSAW, FBE COATED			1	ISSUE FOR FERC	1/2017	GH	EB	DGG	DP	03/2017	SCALE PROFILE H: 1"=200'			
2	80'	PIPE, 24.000" OD X 0.500" WT, API-5L, X70, DSAW, FBE/ARO COATED			2	AMENDMENT TO FERC	04/2017	KAM	RJP	DGG	RJP	04/2017	SCALE PROFILE V: 1"=200'			
											CLIENT APPROVAL DATE	PREPARED BY DATE				
											ENG. APPROVAL DATE	DATE	SCALE 1"=200'	DRAWING NO. STLP-A-012	REVISION 2	

OWNERSHIP / FOOTAGE	632+89	167.0000 1394'	582+89	152.0000 2651'	607.0000 955'	632+89
STATIONING	<p>582+89 584+00 586+00 588+00 590+00 592+00 594+00 596+00 598+00 600+00 602+00 604+00 606+00 608+00 610+00 612+00 614+00 616+00 618+00 620+00 622+00 624+00 626+00 628+00 630+00 632+00 634+00</p>					



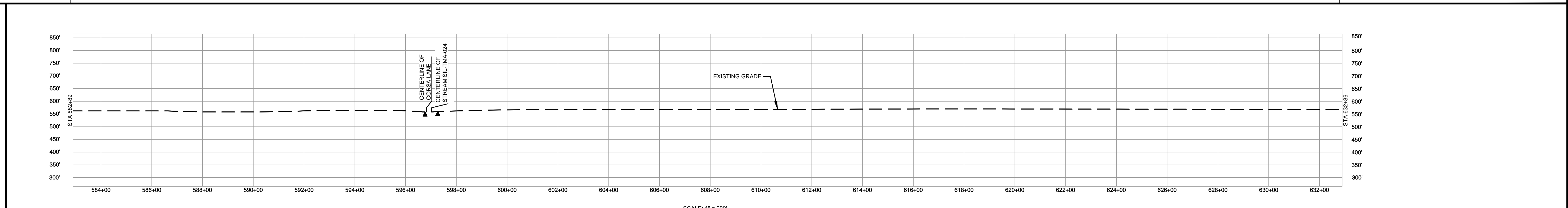
CLASS LOCATION/MAOP	CLASS 1 / 1440 PSIG					
MATERIAL & COATING	<p>582+89</p> <p>1342' (1)</p> <p>80' (2)</p> <p>3578' (1)</p> <p>632+89</p>					
DESIGN FACTOR	0.72		0.6		0.72	
CONSTRUCTION METHOD	OPEN CUT		BORE		OPEN CUT (FLUMED)	
PIPELINE COVER	5'					
SOILS	51B	51A	51B	86C2	47A	68A
LAND USE	AG		D	OL	AG	

THE LOCATION OF TRENCH PLUGS AND WATERBARS ARE INTENDED TO BE USED AS A GUIDELINE ONLY. EXACT LOCATION TO BE DETERMINED IN THE FIELD AS DIRECTED BY THE CHIEF INSPECTOR.

PERMANENT WATERBAR WITH COMPOST FILTER
SOOK AT WATERBAR DISCHARGE
PERMANENT TRENCH PLUG

ILLINOIS		
SLOPE	SLOPE BREAKER SPACING (FT)	TRENCH PLUG SPACING (FT)
5-15%	300	300
15-30%	200	200
>30%	100	100

MISSOURI		
SLOPE	SLOPE BREAKER SPACING (FT)	TRENCH PLUG SPACING (FT)
<5%	125	---
5-10%	100	300
10-15%	75	300
15-20%	75	200
20-30%	50	200
30-35%	50	100
>35%	25	100



NOTES:

- THE IMAGERY SHOWN WAS PROVIDED BY AERIAL DATA SERVICES, 2016. ADDITIONAL IMAGERY SUPPLEMENTED FROM USFWS-NWI AND USGS.
- EXISTING FEATURES SHOWN WERE SURVEYED BY MOTT MACDONALD AND DIGITIZED FROM IMAGERY. ALL LOCATIONS ARE APPROXIMATE AND SHALL BE VERIFIED BY CONTRACTOR.
- PROPERTY LINES DEPICTED ON THIS PLAN ARE BASED ON GIS TAX MAP DATA.
- ROAD CENTERLINES SHOWN ARE FROM PUBLICLY AVAILABLE DATA AND HAVE NOT BEEN SURVEYED.

MATERIAL			REFERENCE DRAWINGS		REVISIONS				APPROVALS			PREPARED FOR		SPIRE STL PIPELINE PROJECT					
TAG	QUANTITY	DESCRIPTION	DWG. NO.	TITLE	NO.	REVISIONS	DATE	DRAWN	CK	APPR	DRAWN BY	DATE	SCALE PLAN:	SCALE PROFILE H:	SCALE PROFILE V:	SCALE	DRAWING NO.	REVISION	
1	4920'	PIPE, 24.000" OD X 0.375" WT, API-5L, X70, DSAW, FBE COATED			1	ISSUE FOR FERC	1/2017	GH	EB	DGG	DP	03/2017	1" = 200'	1" = 200'	1" = 200'	1" = 200'	STLP-A-013	2	
2	80'	PIPE, 24.000" OD X 0.500" WT, API-5L, X70, DSAW, FBE/ARO COATED			2	AMENDMENT TO FERC	04/2017	KAM	RJP	DGG	RJP	03/2017							

Spire STL Pipeline

MOTT MACDONALD

SCALE: 1" = 200'
 DRAWING NO.: STLP-A-013
 REVISION: 2

OWNERSHIP / FOOTAGE		607.0000	4123'	674+12	595.0000	877'	682+89
STATIONING							



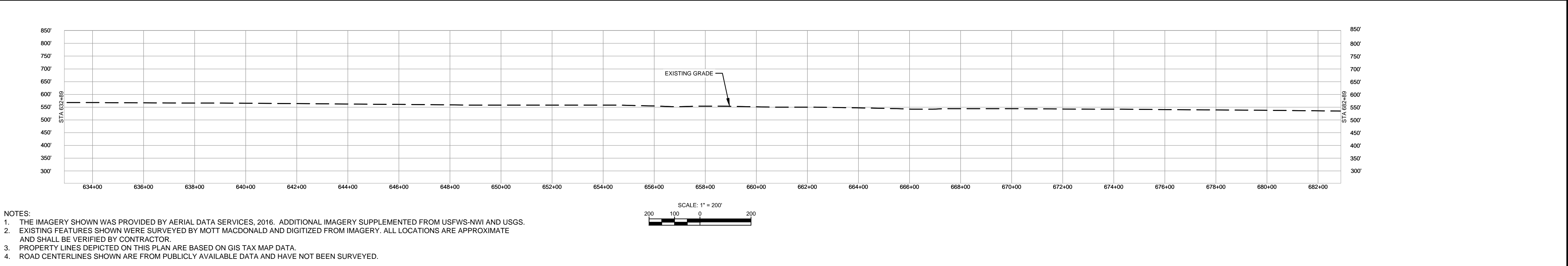
CLASS LOCATION/MAOP	CLASS 1 / 1440 PSIG													
MATERIAL & COATING	5000'													
DESIGN FACTOR	0.72													
CONSTRUCTION METHOD	OPEN CUT													
PIPELINE COVER	5'													
SOILS	51A	68A	51B	675B	51B	675B	675C2	280D	675C2	675B	47A	675B	47A	675B
LAND USE	AG													

THE LOCATION OF TRENCH PLUGS AND WATERBARS ARE INTENDED TO BE USED AS A GUIDELINE ONLY. EXACT LOCATION TO BE DETERMINED IN THE FIELD AS DIRECTED BY THE CHIEF INSPECTOR.

PERMANENT WATERBAR WITH COMPOST FILTER
SOOK AT WATERBAR DISCHARGE
PERMANENT TRENCH PLUG

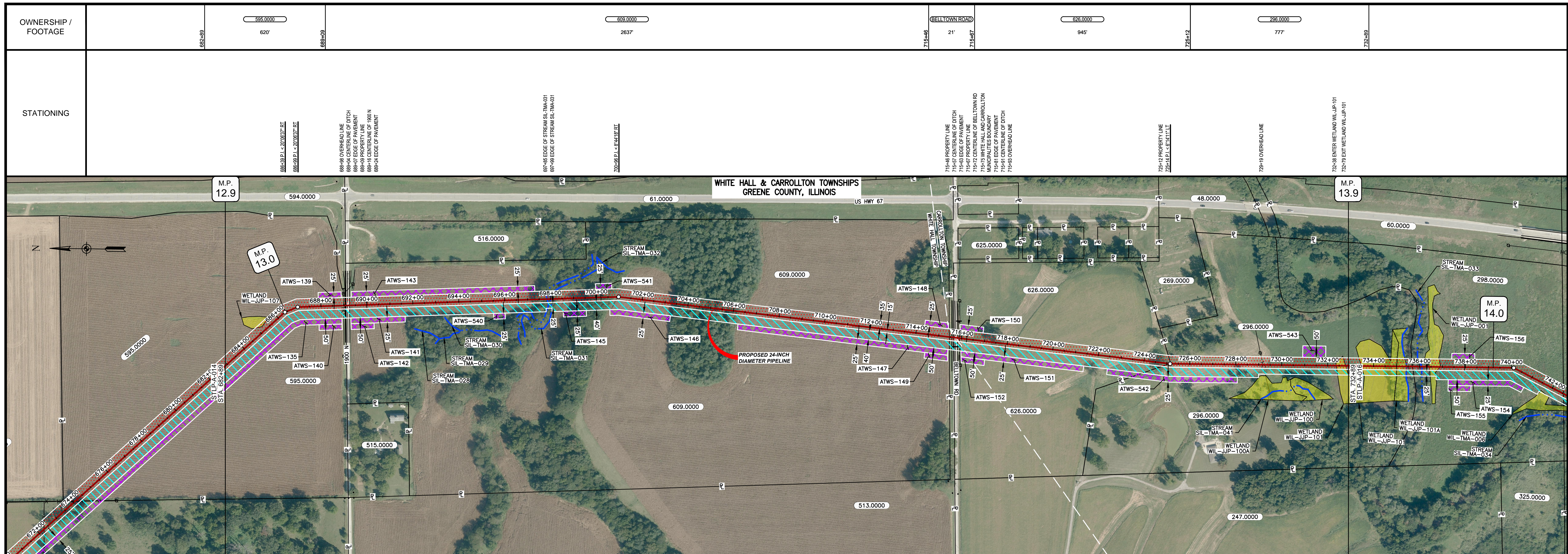
ILLINOIS		
SLOPE	SLOPE BREAKER SPACING (FT)	TRENCH PLUG SPACING (FT)
5-15%	300	300
15-30%	200	200
>30%	100	100

MISSOURI		
SLOPE	SLOPE BREAKER SPACING (FT)	TRENCH PLUG SPACING (FT)
<5%	125	---
5-10%	100	300
10-15%	75	300
15-20%	75	200
20-30%	50	200
30-35%	50	100
>35%	25	100



NOTES:
 1. THE IMAGERY SHOWN WAS PROVIDED BY AERIAL DATA SERVICES, 2016. ADDITIONAL IMAGERY SUPPLEMENTED FROM USFWS-NWI AND USGS.
 2. EXISTING FEATURES SHOWN WERE SURVEYED BY MOTT MACDONALD AND DIGITIZED FROM IMAGERY. ALL LOCATIONS ARE APPROXIMATE AND SHALL BE VERIFIED BY CONTRACTOR.
 3. PROPERTY LINES DEPICTED ON THIS PLAN ARE BASED ON GIS TAX MAP DATA.
 4. ROAD CENTERLINES SHOWN ARE FROM PUBLICLY AVAILABLE DATA AND HAVE NOT BEEN SURVEYED.

MATERIAL			REFERENCE DRAWINGS		REVISIONS				APPROVALS			SCALE PLAN		PREPARED FOR		SPIRE STL PIPELINE PROJECT					
TAG	QUANTITY	DESCRIPTION	DWG. NO.	TITLE	NO.	REVISIONS	DATE	DRAWN	CK	APPR	DRAWN BY	DATE	SCALE PLAN	SCALE PROFILE H	SCALE PROFILE V	PREPARED FOR		SPIRE STL PIPELINE PROJECT			
1	5000'	PIPE, 24.000" OD X 0.375" WT, API-5L, X70, DSAW, FBE COATED			1	ISSUE FOR FERC	1/2017	GH	EB	DGG	DP	03/2017	1" = 200'	1" = 200'	1" = 200'	Spire STL Pipeline		ALIGNMENT SHEET			
					2	AMENDMENT TO FERC	04/2017	KAM	RJP	DGG	RJP	03/2017				PREPARED BY		PROPOSED 24-INCH DIAMETER PIPELINE			
																MOTT MACDONALD		GREENE COUNTY, ILLINOIS			
																		STA. 632+89 TO STA. 682+89			
																SCALE	DRAWING NO.	REVISION			
																1" = 200'	STLP-A-014	2			



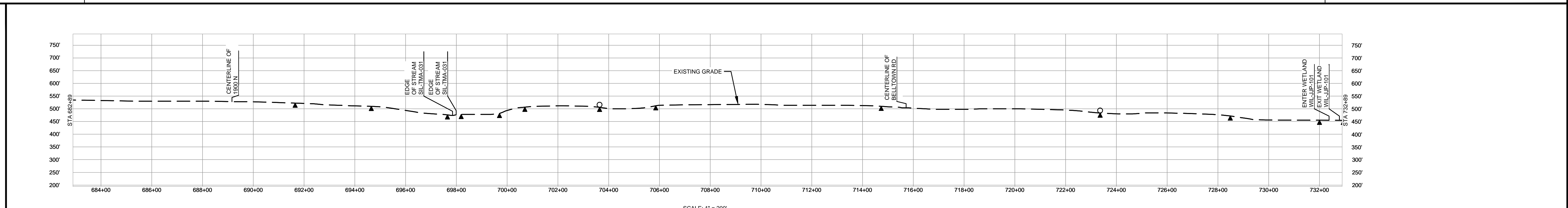
CLASS LOCATION/MAOP	CLASS I / 1440 PSIG																									
MATERIAL & COATING	<table border="1"> <tr> <td>682+89</td><td>688+70</td><td>689+60</td><td>715+29</td><td>716+09</td><td>732+89</td> </tr> <tr> <td>581'</td><td>80'</td><td>257'</td><td>80'</td><td>1680'</td> </tr> <tr> <td>1</td><td>2</td><td>1</td><td>2</td><td>1</td> </tr> </table>										682+89	688+70	689+60	715+29	716+09	732+89	581'	80'	257'	80'	1680'	1	2	1	2	1
682+89	688+70	689+60	715+29	716+09	732+89																					
581'	80'	257'	80'	1680'																						
1	2	1	2	1																						
DESIGN FACTOR	0.72, 0.6, 0.72, 0.6, 0.72																									
CONSTRUCTION METHOD	OPEN CUT, BORE, OPEN CUT, OPEN CUT (FLUMED), OPEN CUT, BORE, OPEN CUT																									
PIPELINE COVER	5', 7'																									
SOILS	675B, 280B, 280D, 3451A, 8F2, 280D2, 280B, 8F2, 280B, 280D2, 280B, 280D2, 280B, 3451A																									
LAND USE	AG, OL, D, OL, AG, F, OW, F, AG, F, AG, F, AG, OL, D, OL, AG, OL, AG, OL, AG, W, AG																									

THE LOCATION OF TRENCH PLUGS AND WATERBARS ARE INTENDED TO BE USED AS A GUIDE ONLY. EXACT LOCATION TO BE DETERMINED IN THE FIELD AS DIRECTED BY THE CHIEF INSPECTOR.

PERMANENT WATERBAR WITH COMPOST FILTER
SOOK AT WATERBAR DISCHARGE
PERMANENT TRENCH PLUG

ILLINOIS		
SLOPE	SLOPE BREAKER SPACING (FT)	TRENCH PLUG SPACING (FT)
5-15%	300	300
15-30%	200	200
>30%	100	100

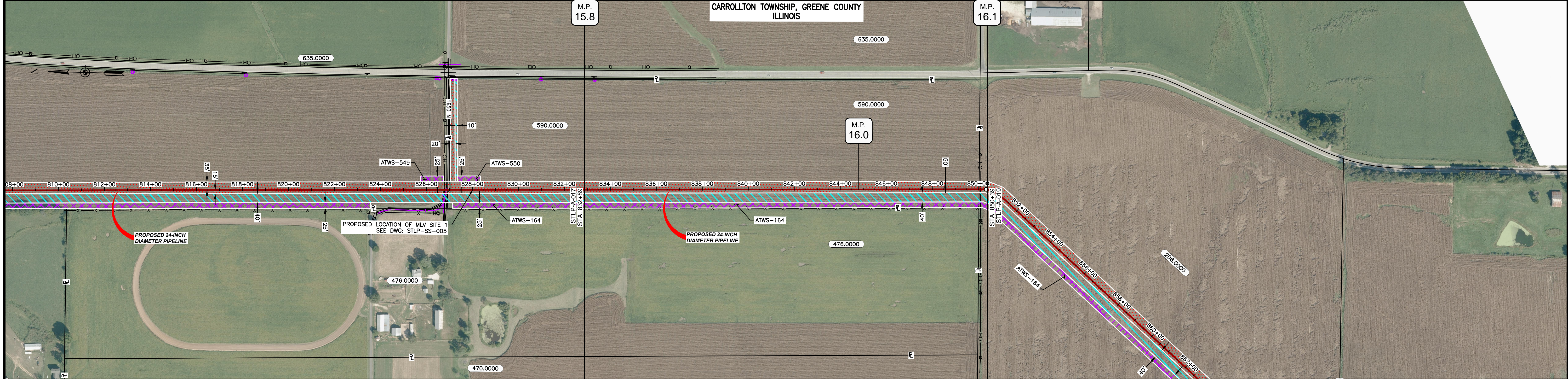
MISSOURI		
SLOPE	SLOPE BREAKER SPACING (FT)	TRENCH PLUG SPACING (FT)
<5%	125	---
5-10%	100	300
10-15%	75	300
15-20%	75	200
20-30%	50	200
30-35%	50	100
>35%	25	100



NOTES:
 1. THE IMAGERY SHOWN WAS PROVIDED BY AERIAL DATA SERVICES, 2016. ADDITIONAL IMAGERY SUPPLEMENTED FROM USFWS-NWI AND USGS.
 2. EXISTING FEATURES SHOWN WERE SURVEYED BY MOTT MACDONALD AND DIGITIZED FROM IMAGERY. ALL LOCATIONS ARE APPROXIMATE AND SHALL BE VERIFIED BY CONTRACTOR.
 3. PROPERTY LINES DEPICTED ON THIS PLAN ARE BASED ON GIS TAX MAP DATA.
 4. ROAD CENTERLINES SHOWN ARE FROM PUBLICLY AVAILABLE DATA AND HAVE NOT BEEN SURVEYED.

MATERIAL		REFERENCE DRAWINGS		REVISIONS				APPROVALS		PREPARED FOR		SPIRE STL PIPELINE PROJECT			
TAG	QUANTITY	DESCRIPTION	DWG. NO.	TITLE	NO.	REVISIONS	DATE	DRAWN	CK	APPR	DRAWN BY	DATE	SCALE PLAN: 1"=200'		ALIGNMENT SHEET PROPOSED 24-INCH DIAMETER PIPELINE GREENE COUNTY, ILLINOIS STA. 682+89 TO STA. 732+89
1	4840'	PIPE, 24.000" OD X 0.375" WT, API-5L, X70, DSAW, FBE COATED			1	ISSUE FOR FERC	1/2017	GH	EB	DGG	DP	03/2017	SCALE PROFILE H: 1"=200'		
2	160'	PIPE, 24.000" OD X 0.500" WT, API-5L, X70, DSAW, FBE/ARO COATED			2	AMENDMENT TO FERC	04/2017	KAM	RJP	DGG	RJP	03/2017	SCALE PROFILE V: 1"=200'	PREPARED BY 	SCALE: 1"=200' DRAWING NO.: STLP-A-015 REVISION: 2
											CLIENT APPROVAL				
											DATE				
											DATE				

OWNERSHIP / FOOTAGE		832+89	590.0000 1714'	850+39	206.0000 36'	850+39
STATIONING						

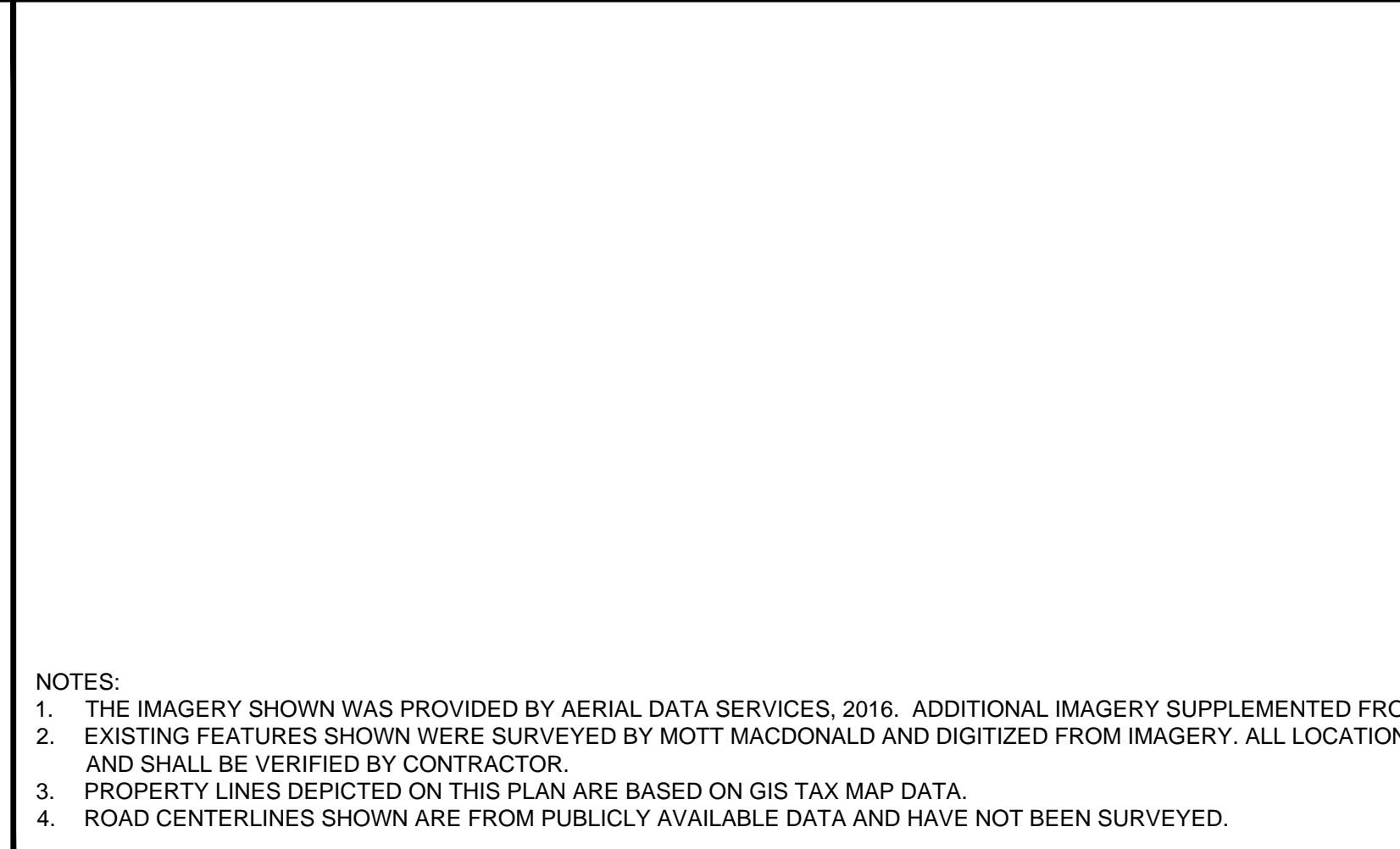


CLASS LOCATION/MAOP		CLASS 1 / 1440 PSIG			
MATERIAL & COATING		832+89	1750'	850+39	
DESIGN FACTOR		0.72			
CONSTRUCTION METHOD		OPEN CUT			
PIPELINE COVER		5'			
SOILS		47A	257B	47A	51A
LAND USE		AG			

THE LOCATION OF TRENCH PLUGS AND WATERBARS ARE INTENDED TO BE USED AS A GUIDELINE ONLY. EXACT LOCATION TO BE DETERMINED IN THE FIELD AS DIRECTED BY THE CHIEF INSPECTOR.

PERMANENT WATERBAR WITH COMPOST FILTER
SOOK AT WATERBAR DISCHARGE
PERMANENT TRENCH PLUG

ILLINOIS		
SLOPE	SLOPE BREAKER SPACING (FT)	TRENCH PLUG SPACING (FT)
5-15%	300	300
15 - 30%	200	200
>30%	100	100
MISSOURI		
SLOPE	SLOPE BREAKER SPACING (FT)	TRENCH PLUG SPACING (FT)
<5%	125	---
5-10%	100	300
10 - 15%	75	300
15-20%	75	200
20-30%	50	200
30-35%	50	100
>35%	25	100

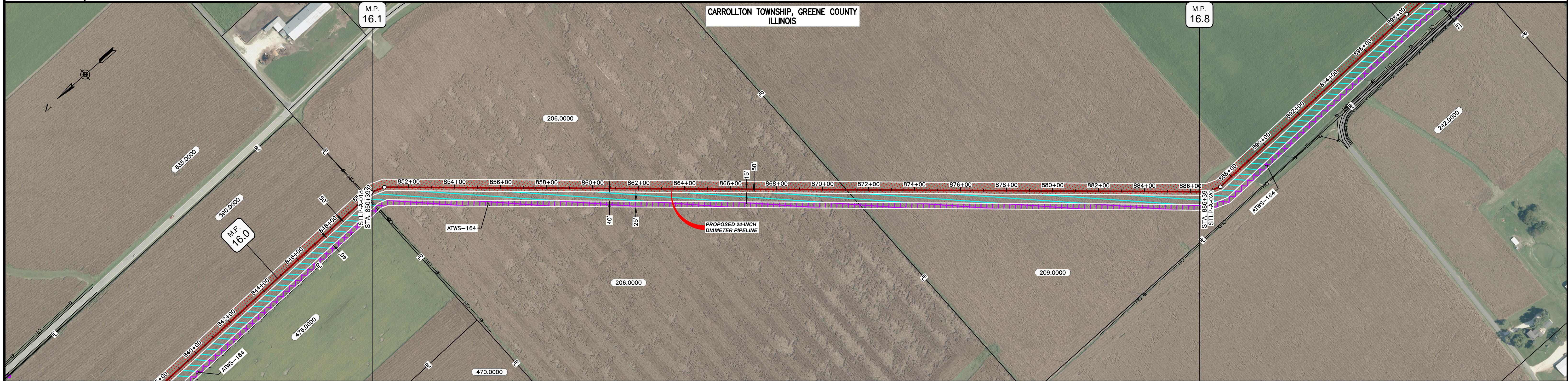


NOTES:

- THE IMAGERY SHOWN WAS PROVIDED BY AERIAL DATA SERVICES, 2016. ADDITIONAL IMAGERY SUPPLEMENTED FROM USFWS-NWI AND USGS.
- EXISTING FEATURES SHOWN WERE SURVEYED BY MOTT MACDONALD AND DIGITIZED FROM IMAGERY. ALL LOCATIONS ARE APPROXIMATE AND SHALL BE VERIFIED BY CONTRACTOR.
- PROPERTY LINES DEPICTED ON THIS PLAN ARE BASED ON GIS TAX MAP DATA.
- ROAD CENTERLINES SHOWN ARE FROM PUBLICLY AVAILABLE DATA AND HAVE NOT BEEN SURVEYED.

MATERIAL		REFERENCE DRAWINGS		REVISIONS				APPROVALS		SCALE PLAN		PREPARED FOR		SPIRE STL PIPELINE PROJECT					
TAG	QUANTITY	DESCRIPTION	DWG. NO.	TITLE	NO.	REVISIONS	DATE	DRAWN	CK	APPR	DRAWN BY	DATE	SCALE PLAN	SCALE PROFILE H	SCALE PROFILE V	PREPARED BY	SCALE	DRAWING NO.	REVISION
1	1750'	PIPE, 24.000" OD X 0.375" WT, API-5L, X70, DSAW, FBE COATED	STLP-SS-005	24" PIPELINE MLV SITE 1	1	ISSUE FOR FERC	01/2017	GH	EB	DGG	DP	04/2017	1" = 200'	1" = 200'	1" = 200'	MOTT MACDONALD	1" = 200'	STLP-A-018	2
					2	AMENDMENT TO FERC	04/2017	KAM	WH	DGG	RJP	04/2017							

OWNERSHIP / FOOTAGE		208.0000 2064'	209.0000 1536'
STATIONING			



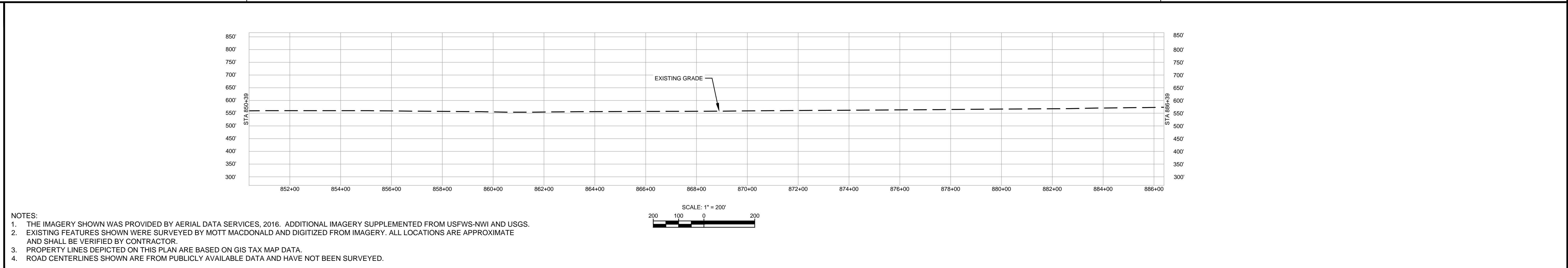
CLASS LOCATION/MAOP	CLASS 1 / 1440 PSIG										
MATERIAL & COATING	3600'										
DESIGN FACTOR	0.72										
CONSTRUCTION METHOD	OPEN CUT										
PIPELINE COVER	5'										
SOILS	51A	51B	51A	47A	61A	47A	257B	47A	257B	47A	257B
LAND USE	AG										

THE LOCATION OF TRENCH PLUGS AND WATERBARS ARE INTENDED TO BE USED AS A GUIDELINE ONLY. EXACT LOCATION TO BE DETERMINED IN THE FIELD AS DIRECTED BY THE CHIEF INSPECTOR.

PERMANENT WATERBAR WITH COMPOST FILTER
SOCK AT WATERBAR DISCHARGE
PERMANENT TRENCH PLUG

ILLINOIS		
SLOPE	SLOPE BREAKER SPACING (FT)	TRENCH PLUG SPACING (FT)
5-15%	300	300
15 - 30%	200	200
>30%	100	100

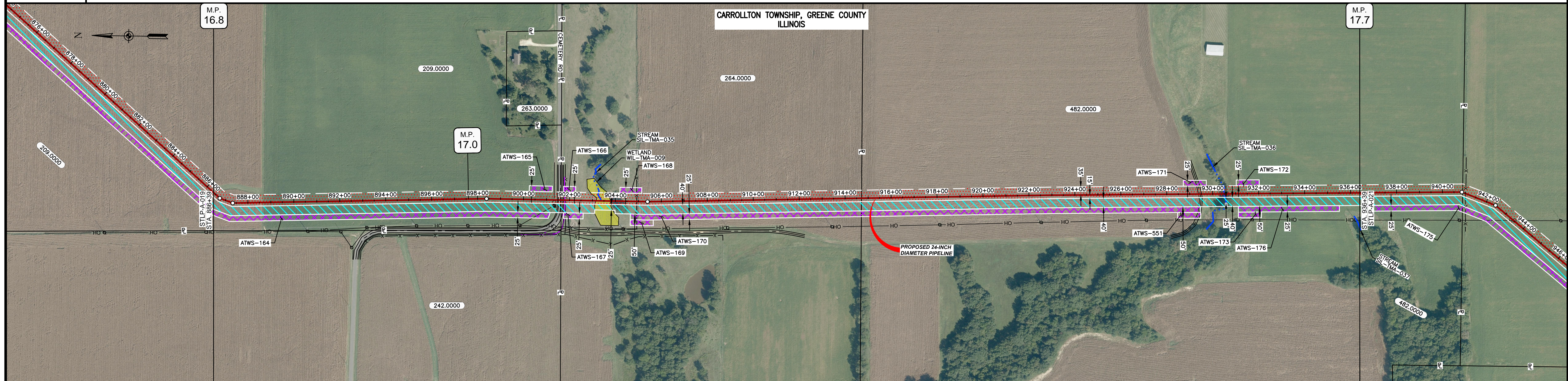
MISSOURI		
SLOPE	SLOPE BREAKER SPACING (FT)	TRENCH PLUG SPACING (FT)
<5%	125	---
5-10%	100	300
10 - 15%	75	300
15-20%	75	200
20-30%	50	200
30-35%	50	100
>35%	25	100



- NOTES:
1. THE IMAGERY SHOWN WAS PROVIDED BY AERIAL DATA SERVICES, 2016. ADDITIONAL IMAGERY SUPPLEMENTED FROM USFWS-NWI AND USGS.
 2. EXISTING FEATURES SHOWN WERE SURVEYED BY MOTT MACDONALD AND DIGITIZED FROM IMAGERY. ALL LOCATIONS ARE APPROXIMATE AND SHALL BE VERIFIED BY CONTRACTOR.
 3. PROPERTY LINES DEPICTED ON THIS PLAN ARE BASED ON GIS TAX MAP DATA.
 4. ROAD CENTERLINES SHOWN ARE FROM PUBLICLY AVAILABLE DATA AND HAVE NOT BEEN SURVEYED.

MATERIAL			REFERENCE DRAWINGS		REVISIONS				APPROVALS			SCALE PLAN:		PREPARED FOR		SPIRE STL PIPELINE PROJECT					
TAG	QUANTITY	DESCRIPTION	DWG. NO.	TITLE	NO.	REVISIONS	DATE	DRAWN	CK	APPR	DRAWN BY	DATE	SCALE PLAN:	SCALE PROFILE H:	SCALE PROFILE V:	PREPARED FOR		SPIRE STL PIPELINE PROJECT			
1	3600'	PIPE, 24.000" OD X 0.375" WT, API-5L, X70, DSAW, FBE COATED			1	ISSUE FOR FERC	01/2017	GH	EB	DGG	DP	04/2017	1" = 200'	1" = 200'	1" = 200'	Spire STL Pipeline		ALIGNMENT SHEET			
					2	AMENDMENT TO FERC	04/2017	KAM	WH	DGG	RJP	04/2017				PREPARED BY		PROPOSED 24-INCH DIAMETER PIPELINE			
											ENG. APPROVAL	DATE				MOTT MACDONALD		GREENE COUNTY, ILLINOIS			
											P.M. APPROVAL	DATE						STA. 850+39 TO STA. 886+39			
											JEW	04/2017				SCALE	DRAWING NO.	REVISION			
													1" = 200'	STLP-A-019						2	

OWNERSHIP / FOOTAGE	886+39	209.0000	1525'	801+484	264.0000	1307'	814+71	482.0000	2166'	936+39
STATIONING	886+39 P.L. < 11'39" L.T.	886+39 P.L. < 11'39" L.T.	886+39 P.L. < 11'39" L.T.	886+39 P.L. < 11'39" L.T.	886+39 P.L. < 11'39" L.T.	886+39 P.L. < 11'39" L.T.	886+39 P.L. < 11'39" L.T.	886+39 P.L. < 11'39" L.T.	886+39 P.L. < 11'39" L.T.	886+39 P.L. < 11'39" L.T.

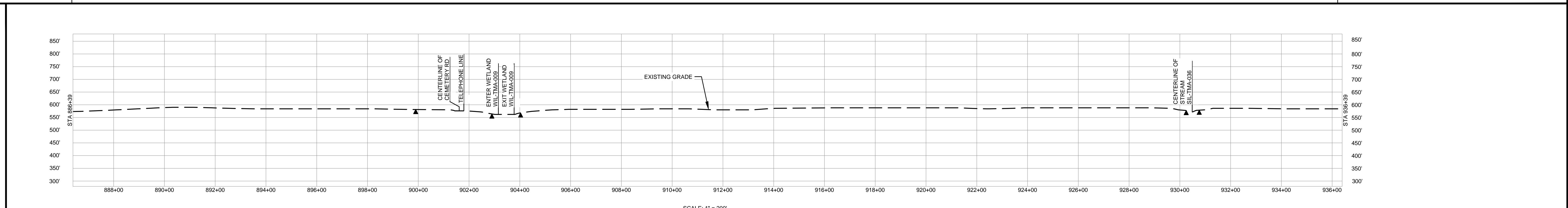


CLASS LOCATION/MAOP	CLASS 1 / 1440 PSIG																								
MATERIAL & COATING	<table border="1"> <tr> <td>886+39</td> <td>1479'</td> <td>(1)</td> <td>801+18</td> <td>80'</td> <td>(2)</td> <td>801+98</td> <td>3441'</td> <td>(1)</td> <td>936+39</td> </tr> </table>										886+39	1479'	(1)	801+18	80'	(2)	801+98	3441'	(1)	936+39					
886+39	1479'	(1)	801+18	80'	(2)	801+98	3441'	(1)	936+39																
DESIGN FACTOR	0.72					0.6																			
CONSTRUCTION METHOD	OPEN CUT					BORE																			
PIPELINE COVER	5'																								
SOILS	257B	280C2	280B	675C2	280C2	257B	675C2	280D2	8F2	280D2	280C2	280B	280D2	17A	280C2	280D2	280B	280D2	280B	280D2	280B	280D2	17A	51A	280C2
LAND USE	AG					OL	D	AG	W	AG					F	AG									

THE LOCATION OF TRENCH PLUGS AND WATERBARS ARE INTENDED TO BE USED AS A GUIDELINE ONLY. EXACT LOCATION TO BE DETERMINED IN THE FIELD AS DIRECTED BY THE CHIEF INSPECTOR.
PERMANENT WATERBAR WITH COMPOST FILTER
SOOK AT WATERBAR DISCHARGE
PERMANENT TRENCH PLUG

ILLINOIS		
SLOPE	SLOPE BREAKER SPACING (FT)	TRENCH PLUG SPACING (FT)
5-15%	300	300
15-30%	200	200
>30%	100	100

MISSOURI		
SLOPE	SLOPE BREAKER SPACING (FT)	TRENCH PLUG SPACING (FT)
<5%	125	---
5-10%	100	300
10-15%	75	300
15-20%	75	200
20-30%	50	200
30-35%	50	100
>35%	25	100



NOTES:
1. THE IMAGERY SHOWN WAS PROVIDED BY AERIAL DATA SERVICES, 2016. ADDITIONAL IMAGERY SUPPLEMENTED FROM USFWS-NWI AND USGS.
2. EXISTING FEATURES SHOWN WERE SURVEYED BY MOTT MACDONALD AND DIGITIZED FROM IMAGERY. ALL LOCATIONS ARE APPROXIMATE AND SHALL BE VERIFIED BY CONTRACTOR.
3. PROPERTY LINES DEPICTED ON THIS PLAN ARE BASED ON GIS TAX MAP DATA.
4. ROAD CENTERLINES SHOWN ARE FROM PUBLICLY AVAILABLE DATA AND HAVE NOT BEEN SURVEYED.

MATERIAL		REFERENCE DRAWINGS		REVISIONS				APPROVALS			PREPARED FOR		SPIRE STL PIPELINE PROJECT		
TAG	QUANTITY	DESCRIPTION	DWG. NO.	TITLE	NO.	REVISIONS	DATE	DRAWN	CK	APPR	DRAWN BY	DATE	SCALE PLAN: 1"=200'	SCALE PROFILE H: 1"=200'	SCALE PROFILE V: 1"=200'
1	4920'	PIPE, 24.000" OD X 0.375" WT, API-5L, X70, DSAW, FBE COATED			1	ISSUE FOR FER	01/2017	GH	EB	DGG	DP	04/2017			
2	80'	PIPE, 24.000" OD X 0.500" WT, API-5L, X70, DSAW, FBE/ARO COATED			2	AMENDMENT TO FER	04/2017	KAM	WH	DGG	RJP	04/2017			
											CLIENT APPROVAL		PREPARED BY		
											DATE		MOTT MACDONALD		
											DATE		SCALE		
											DRAWING NO.		REVISION		
											STLP-A-020		2		